



# A263

## Reverser Kit

### Portable Grain Auger

### Installation Instructions

Applicable Models:

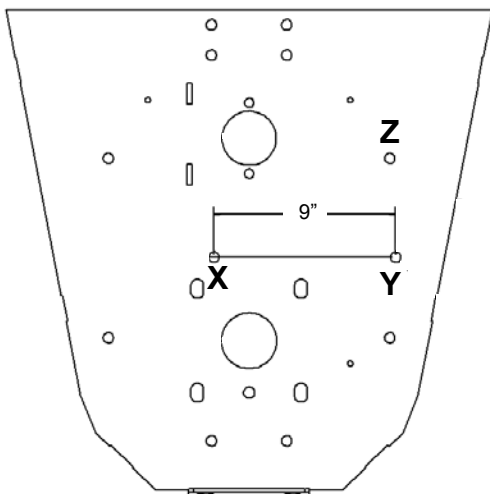
**MKX13, X13, HX13 Series**

#### Pre-Installation Instructions

1. Lower the auger to full down position, and disconnect the tractor from the auger (PTO shaft, hydraulic lines, and hitch).
2. Chock the auger wheels to prevent rolling.
3. Lower the swing hopper fully to the ground.
4. Remove the PTO driveline from the auger.
5. Remove the sprocket shield from the boot.
6. Remove the drive chain from the front of the boot.

#### Reverser Kit Installation

1. Locate hole "X", hole "Y" and hole "Z". Knock the steel plugs out of these holes using a punch and hammer.



2. Install the reverser base assembly with three 1/2" x 1-1/4" bolts, flat washers and locknuts. Do not tighten until step 5.
3. Install the half-link on roller chain and place chain over upper and lower sprockets, passing it through the reverser base.
4. Join the two ends of the chain together using the half link and the connector link.
5. Push the reverser base against the chain as tight as possible and tighten the three 1/2" x 1-1/4" bolts.

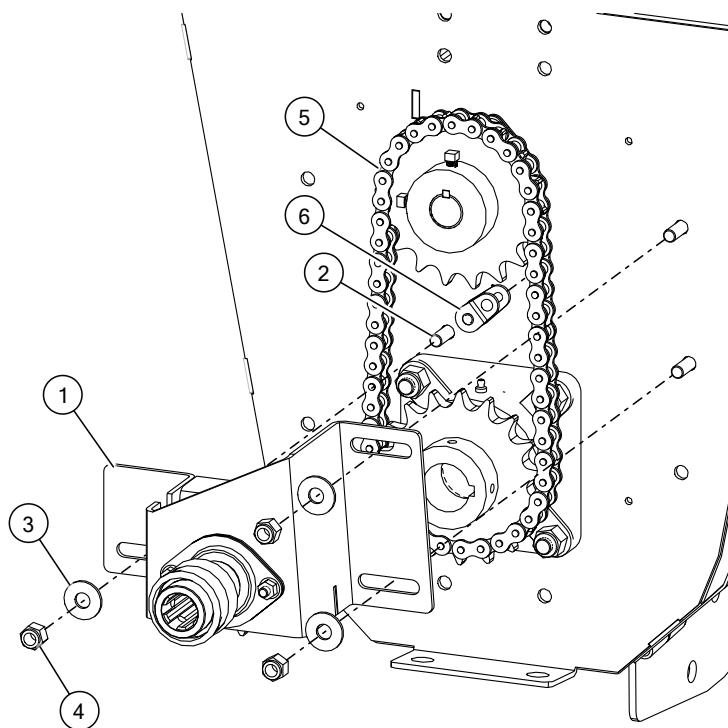
**Note**

It may be necessary to loosen the lower bearing and raise the lower sprocket to get proper chain wrap on the reverser sprocket.

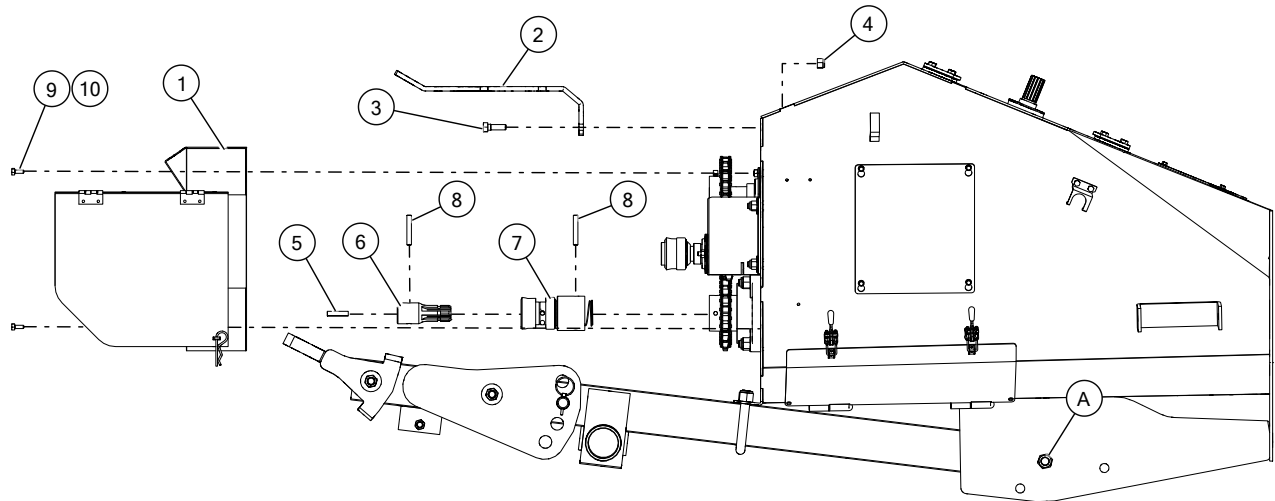
6. Install the splined coupler on the flight shaft using a 3/8" x 1-3/4" square key and a 3/8" roll pin.

**CAUTION** Protect your eyes when tapping in the roll pin.

7. Install the new reverser shield using the original four 5/16" x 3/4" bolts and locknuts. Discard the old sprocket shield.
8. Attach the new (longer) PTO bracket to front of boot face with two 1/2" x 1-1/2" bolts and locknuts. If equipped, remove the double hose holder from the existing PTO bracket and attach it to the longer PTO bracket.
9. Adjust the boot tow bar to use the appropriate hole (labeled "Reverser Hole" in a following image), and attach using the existing 3/4" x 5-1/2" bolt and locknut. Tighten securely.
10. Install the splined stub shaft on the PTO driveline using a 3/8" x 1-3/4" square key and 3/8" roll pin. Use a thread locking compound on setscrews to install and tighten them securely.



1	Reverser Base Assembly
2	Bolt, 1/2" x 1-1/4"
3	Flat Washer, 1/2"
4	Locknut, 1/2"
5	Roller Chain
6	Half Link (Heavy), #80HR



1	Reverser Shield	7	Splined Coupler
2	PTO Bracket	8	Roll Pin, 3/8" x 2-1/2"
3	Bolt, 1/2" x 1-1/2"	9	Bolt, 5/16" x 3/4"
4	Locknut, 1/2"	10	Locknut, 5/16"
5	Square Key, 3/8" x 1-3/4"	A	Reverser Hole
6	Splined Stub Shaft		



P.O. Box 39  
 Rosenort, Manitoba, R0G 1W0 Canada  
 Phone: (866) 467-7207 (Canada & USA) or (204) 746-2396  
 Fax: (866) 768-4852

Website: [www.grinaugers.com](http://www.grinaugers.com)  
 Email: [sales@grinaugers.com](mailto:sales@grinaugers.com)  
 ©Ag Growth International Inc. 2020, Printed in Canada