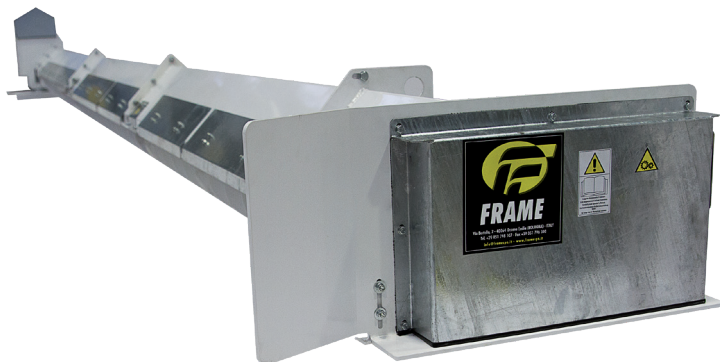
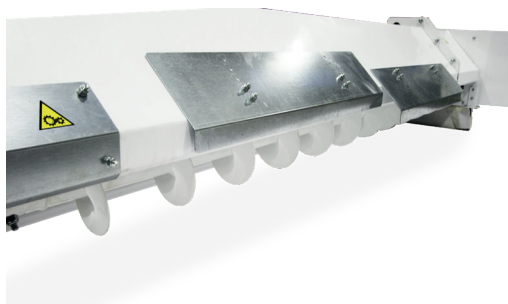
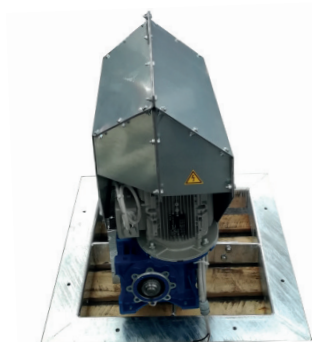
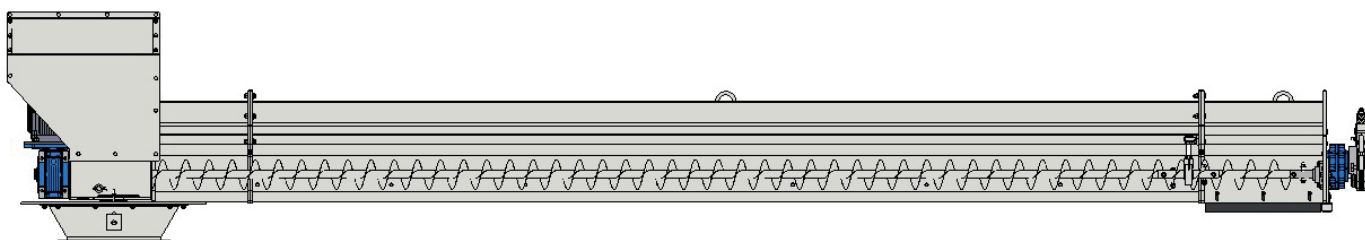


# FSA100 SWEEP AUGERS



- › The AGI FRAME FSA100 sweep auger is manufactured to suit a wide range of AGI FRAME FP silo diameters & is designed to be permanently installed in the silo & can be used with free flowing granular materials. The direct coupled gear motor drive can be mounted either in the silo or, at additional cost, in the gallery under the silo
- › The drive assembly is mounted on a heavy painted central support frame
- › ATEX specifications are available at additional cost

TECHNICAL DATA	FSA100
CAPACITY (BASED ON DRIED CEREAL 780 KG/m <sup>3</sup> . ACCORDING TO RPM)	100
FLIGHT DIAMETER	230 mm
FLIGHT THICKNESS	3 mm
SWEEP AUGER PROGRESSION	3 Rubber Wheels
CENTRE TUBE DIAMETER	60,3 mm
CENTRE TUBE WALL THICKNESS	2,9 mm
APEX COVER	150x150x3 mm SQUARE TUBE
APEX COVER CONNECTION	BOLTED FLANGE
FLOW REGULATION ADJUSTABLE FLAPS	2 mm - GALVANIZED
SCREW ROTATION SPEED	300 RPM



**FRAME S.R.L.**

Via Bertella 2 - 40064 Ozzano dell'Emilia (BO) – Italy

P +39 051 798 107 | F +39 051 796 300 | E info@framespa.it | framespa.com | aggrowth.com