



**AGI  SENTINEL**

***ALL-STEEL ADVANTAGE***

***ENGINEERED STRENGTH. BUILT TO LAST.***



# YOUR VISIONS, OUR EXPERTISE.

## Custom Steel Buildings Built for You

AGI Sentinel buildings are designed for fast, efficient installation, saving you time and money. With clear span and modular span options, you can customize your structure to fit your exact requirements. And when it comes to service, we stand by our work. Our customers are customers for life



### THE PERFECT SOLUTION

- Engineered to meet local building codes
- Expert engineering and design support
- Manufactured in the Midwest, USA
- Dedicated customer service from start to finish
- Innovative, hassle-free building experience
- Backed by a rock-solid warranty

### FRAME OPTIONS FOR EVERY NEED



#### Standard Frame

Std. Width: 150' | Eave Hgts: Up to 40'  
Roof Slope: 2:12\*



#### Single Slope

Std. Width: 150' | Eave Hgts: 10' – 28'  
Roof Slope: ¼:12 – 2:12\*



#### Modular Frame

Std. Width: 150' | Eave Hgts: Up to 30'  
Roof Slope: ¼:12 – 4:12\*



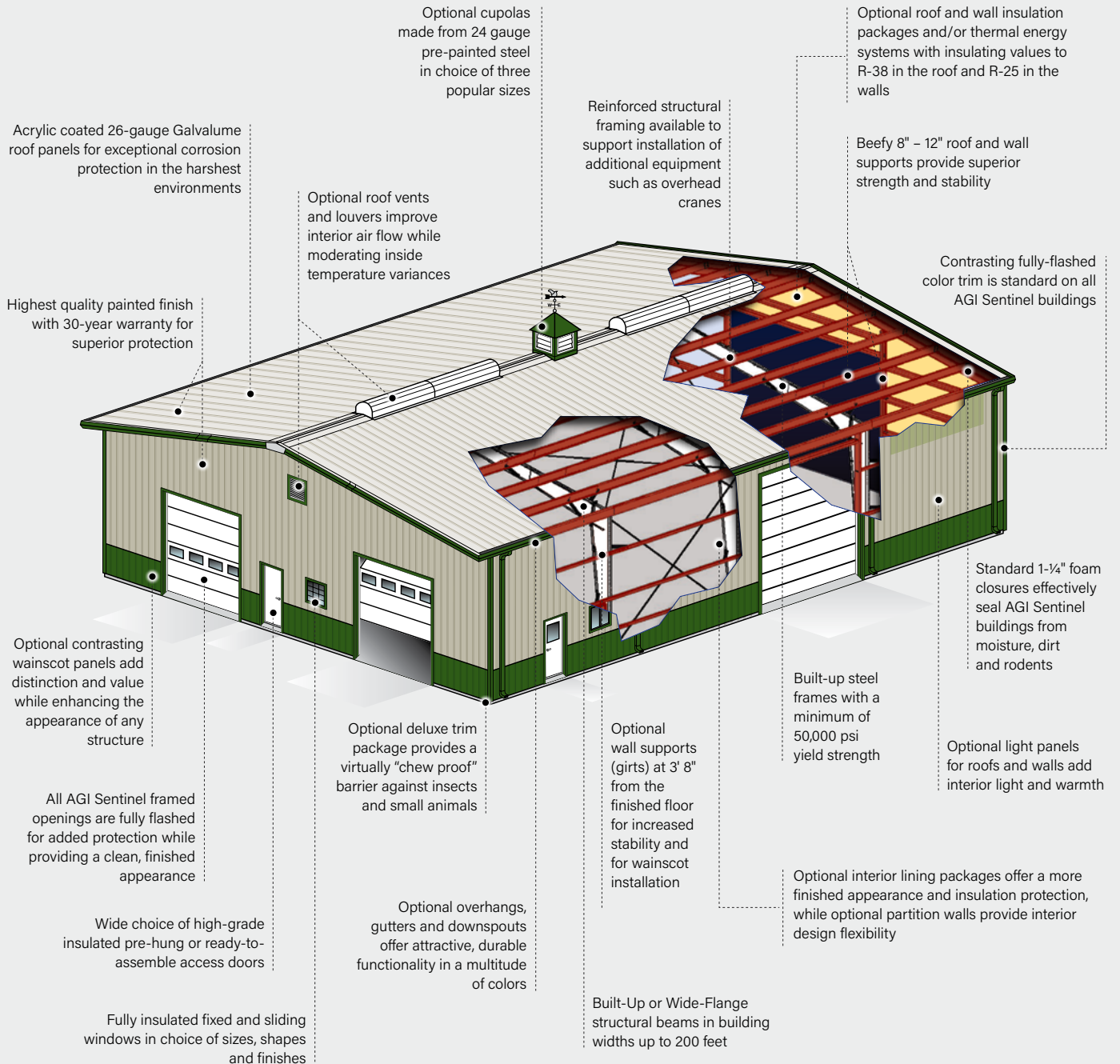
#### Lean-to Frame

Std. Width: 60' | Eave Hgts: Up to 29'  
Roof Slope: 4:12\*

\*Standard Roof Slopes

# BUILT FOR PERFORMANCE

Engineered to Your Specifications, Designed for Fast Installation and Lower Total Costs.



QUALITY. VERSATILITY. VALUE.

# FEATURES & ACCESSORIES

## Wall & Roofing Panels

- 26-gauge panels in multiple finishes and colors
- Long-term protection and aesthetic appeal

## Windows

- Fixed and sliding options
- Pre-hung or ready-to-assemble

## Interior Finishing

- Steel liner panels in 26 or 29-gauge
- Energy-efficient and stylish

## Overhangs, Gutters & Downspouts

- Protect your foundation and enhance appearance
- Available in multiple colors

## Wainscot

- Contrasting panels for a distinctive look

## Doors

- Insulated and non-insulated options
- Configurable to your exact needs

## Insulation

- Fiberglass blanket and thermal systems
- Quiet, comfortable, and energy-efficient

## Exterior Facades

- Canopy, Mansard, and Parapet options
- Add flair and signage space



Windows



Interior finishing



Overhangs, gutters and downspouts



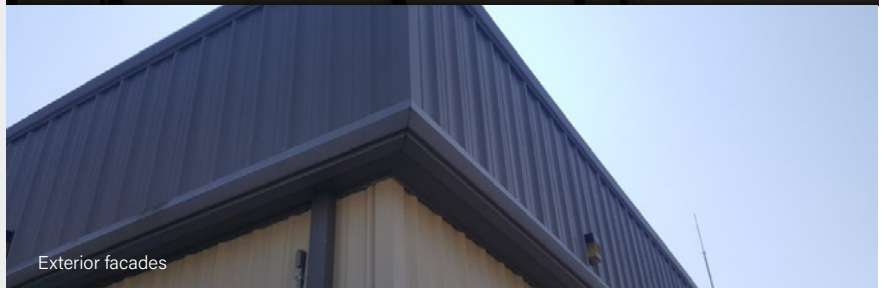
Wainscot



Doors



Insulation



Exterior facades

## WHY CHOOSE STEEL?

### Durable & Reliable

- Withstands wind, earthquakes, pests, and fire
- Long-lasting with minimal maintenance

### Efficiency & Cost Savings

- High strength-to-weight ratio
- Prefabricated for faster construction
- Lower labor and foundation costs

### Flexible & Expandable

- Easily add space or reconfigure
- Custom-fit additions available

### Low Maintenance

- No rot, repainting, or pest damage
- Easy to clean and maintain

### Sustainable & Eco-friendly

- 100% recyclable steel
- Reduces landfill waste



## Why build with anything else?

Steel is the most cost-effective, durable, and flexible building material available.



# CUSTOMIZE YOUR BUILDING WITH DURABLE, HIGH-PERFORMANCE FINISHES



## SHERWIN-WILLIAMS Coil Coatings

### Built to Endure

Our buildings are finished with Sherwin-Williams Coil Coatings, delivering superior resistance to weather, UV rays, and corrosion for long-lasting performance.

### Cooler, Smarter, Greener

Featuring solar-reflective technology, these coatings help reduce heat absorption—lowering energy costs and supporting sustainable building practices.

### Lasting Impressions

Choose from a wide range of vibrant, fade-resistant finishes that maintain their beauty and integrity for decades.



All colors meet ENERGY STAR® requirements for steep slope roofs.



**Disclaimer:** Product color may vary from online picture due to variations in monitor settings. We cannot guarantee that the color display on our digital brochure will match the color of the product. If you have any questions about a particular color, please contact us prior to ordering for clarification or request a chip sample.

**Hunter Prime**  
SR .35 SRI 37

**Desert Prime**  
SR .42 SRI 47

**Light Stone Prime**  
SR .56 SRI 65

**Tan Prime**  
SR .47 SRI 53

**Brown Prime**  
SR .33 SRI 34

**Burgundy Prime**  
SR .30 SRI 31

**Rustic Prime**  
SR .36 SRI 38

**Crimson Prime**  
SR .31 SRI 31

**Brilliant Prime**  
SR .69 SRI 84

**Polar Prime**  
SR .64 SRI 77

**Grey Prime**  
SR .46 SRI 52

**Burnished Slate Prime**  
SR .34 SRI 35

**Matte Black Prime**  
SR .31 SRI 31

**Charcoal Prime**  
SR .37 SRI 39

**Gallery Prime**  
SR .26 SRI 24

**Hawaiian Prime**  
SR .31 SRI 31

† Color variation between orders is normal and not cause for rejection.

‡ Weathering and appearance variation, including color, sheen, and spangle, is common in non-painted materials and is not a cause for rejection. For consistent appearance, choose a paint-finished product.

Colors on this chart are close representations of actual metal color, limited by printing and viewing conditions.

Color matching is optimized for outdoor viewing.

# AGRIBUSINESS APPLICATIONS

- Equipment Storage and Maintenance Facilities
- Livestock Housing and Processing
- Grain and Feed Storage
- Controlled Environmental Agriculture
- Agri-Processing and Value-Added Facilities





AGI is a global leader in supplying farm and commercial customers with the manufacturing, planning, and engineering of full equipment solutions for grain, seed, fertilizer, feed, and food. AGI's expertise enables the storage, blending, mixing, conveying, conditioning, processing, and protection of agricultural products and inputs worldwide.



**Your safety is our highest priority.**

Please read and understand the operator's manual and safety decals before using. Use and maintain products properly, and do not modify. Keep guards in place when operating and follow all product manuals and safety decals. For all AGI products, if guards, safety decals, or manuals are damaged or missing, contact your AGI sales or dealer representative for replacements. Images and information contained in this brochure are presented for general information.

AGI Sentinel, AGI and the furrows symbol are trademarks belonging to Ag Growth International Inc.

Albion, NE 68620, United States

P 402.395.5076 | [aggrowth.com/sentinel](http://aggrowth.com/sentinel)

     @aggrowthintl

[AGGROWTH.COM](http://AGGROWTH.COM)