

AGI  GRAINMAXX

BELT CONVEYORS

AND ACCESSORIES



LODE KING

UCX³

10" U-TROUGH TUBE
15" BELT
UP TO 12,500 BPH
49' LENGTH



FEATURES

- All grain commodity system suitable for all seed types, including oil seeds
- Easy to use spray and run wash system removes debris and residue on the back side of the belt from tough to wash commodities
- Two belt scrapers and one belt brush come standard helping to keep your belt clean
- Two-year limited warranty
- Ergonomic command center controls electric throttle, lights, start/stop, hydraulics and electric clutch with joystick steer for mover kit hydraulics
- Hopper with urethane seals, a stiffened hopper cloth, urethane flashing and a 32" parallel width for the full working length
- S-drive with pinch roller helps prevent over-tightening
- Sealed, straight down spout allows you to center trucks under the unit
- Straight down spout eliminates the need for additional down spouts, so conveyor can stay at a lower working angle, increasing capacity
- Sealed edge belt limits leakage
- 40 HP EFI Vanguard motor and triple banded drive belts with spring loaded tensioners

MOVER KIT FEATURES

- Adds an extra 15" of discharge height when compared to previous models
- All wheel drive
- 160° turning radius for tight yards

UCX³

UCX³ 1549 FMD W/ HANGING GAS

CAPACITY	Up to 12500 bph
TUBE GAUGE	Formed 12 ga laser cut U-trough
BELT TYPE	15" wide Direct-X
BELT LENGTH	110' 8"
LIFT	Hydraulic winch
FRAME TYPE	A-frame
AXLE	2 1/2" sq. x .125"
HUB	4-bolt on 5.0", 3.62" pilot
TIRES	4-bolt ST205/75D15
PARKING JACK	7000 lbs rating, top twist 2 1/2" receiver, 25" travel
HOPPER DIMENSIONS	65 13/16" length x 31 1/4" width x 17 3/8" height
HP REQUIRED (WITH DRY WHEAT)	Vanguard 40 HP EFI
CONVEYOR WIDTH (HUB FACE TO FACE)	83.25"
CONVEYOR WEIGHT	4100 lbs



AWD MOVER KIT



AWD MOVER KIT



COMMAND CENTER



MOTOR AND BELT DRIVES



BELT SEAL AND TEXTURE

UCX ³	HEIGHT LOWERED	HEIGHT HALFWAY	HEIGHT RAISED	REACH LOWERED	REACH HALFWAY	REACH RAISED	HEIGHT AT LIFT ARMS HALFWAY	HEIGHT AT WHEELS RAISED	REACH AT LIFT ARMS HALFWAY	REACH AT WHEELS RAISED
1549 FMD W/ HANGING GAS	9' 6" (2.9 m)	16' 2" (4.928 m)	20' 10.75" (6.369m)	24' 0.25" (7.322 m)	23' 8.25" (7.22 m)	23' 5.25" (7.169 m)	10' 1.5" (3.086 m)	11' 5.75" (3.499 m)	20' 0.25" (6.102 m)	22' 4.75" (6.826 m)

Heights measured from bottom of conveyor spout to ground.

UCX⁴

DIESEL-POWERED

10" U-TROUGH TUBE

15" BELT

UP TO 10,500 BPH

49' LENGTH



FEATURES

24 HP Kohler turbocharged diesel engine

Delivers reliable power with better torque and fuel efficiency. Farmers get longer engine life and lower fuel costs, even in demanding conditions.

Direct drive gearbox

- Gearbox directly mounted to the drive roller means fewer parts, less downtime and all the power delivered where it counts.
- Triple groove drive belt built to last under pressure. More grip, less wear and fewer replacements.

Bell housing electric clutch

A heavy-duty, weather-protected clutch built into the bell housing. Safer, more durable and fully self-contained for peace of mind.

Direct mount hydraulic pump

No belts, no slippage. Just smooth, low-maintenance hydraulic performance that keeps your operation running strong.

1500W block heater & 1000CCA battery

Equipped with a powerful engine block heater and a high-capacity battery for enhanced cold weather starting performance and reliable power delivery.

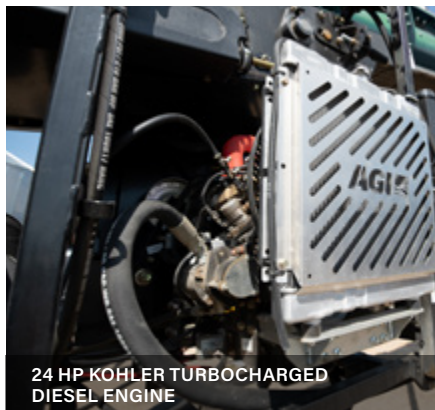
Overhauled engine mount

- New hydraulic tank and filter location optimized for cold weather and easier servicing.
- Keeps your hydraulics flowing smoothly when it matters most.
- EZ oil drain valve makes oil changes quick and clean. Less mess, less hassle and more uptime.

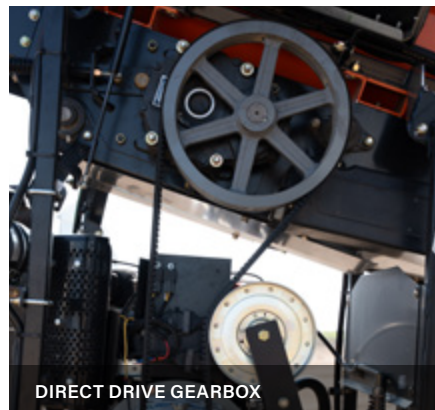
UCX⁴

UCX⁴ 1549 FMD DIESEL

CAPACITY	Up to 10500 bph
TUBE GAUGE	12 ga laser cut U-trough
BELT TYPE	15" wide Direct-X
BELT LENGTH	110' 8"
LIFT	Hydraulic winch
FRAME TYPE	A-frame
AXLE	2 1/2" sq. x .188"
HUB	6-bolt on 6.0", 4.62" pilot
TIRES	6-bolt ST205/75R15 6PL
PARKING JACK	7000 lbs rating, top twist 2 1/2" receiver, 25" travel
HOPPER DIMENSIONS	65 13/16" length x 31 1/4" width x 17 3/8" height
HP REQUIRED (WITH DRY WHEAT)	Kohler 24 HP turbo diesel
CONVEYOR WIDTH (HUB FACE TO FACE)	83.75"
CONVEYOR WEIGHT	4300 lbs



24 HP KOHLER TURBOCHARGED
DIESEL ENGINE



DIRECT DRIVE GEARBOX



BELL HOUSING ELECTRIC CLUTCH



DIRECT MOUNT HYDRAULIC PUMP

FEATURES (continued)

Heads-up digital display & updated command center

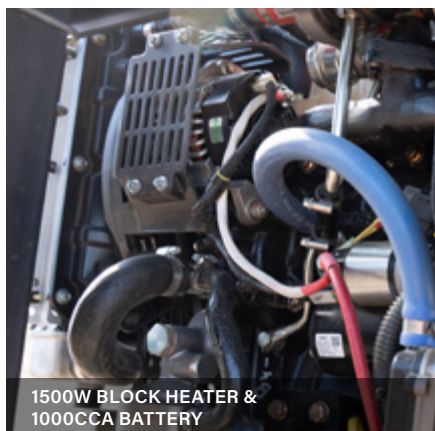
- Clear, modern interface puts key information front and center.
- Bolt-on design fits either side of the machine. Customizable for operator preference and comfort.

Lower profile collapsible hopper & handle

More clearance under bins, easier setup and better maneuverability in tight spaces.

Heavy-duty hopper cloth liner

Built tough for long days and heavy loads. Ready to move when you are.



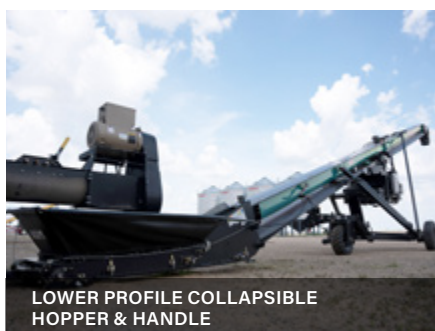
1500W BLOCK HEATER &
1000CCA BATTERY



OVERHAULED ENGINE MOUNT



HEADS-UP DIGITAL DISPLAY &
UPDATED COMMAND CENTER



LOWER PROFILE COLLAPSIBLE
HOPPER & HANDLE



HEAVY-DUTY HOPPER CLOTH LINER

GCX³

10" TUBE
15" BELT
UP TO 10,000 BPH
49' LENGTH



FEATURES

- All grain commodity system suitable for most seed types
- Easy to use spray and run wash system removes debris and residue on the back side of the belt from tough to wash commodities
- Two belt scrapers and one belt brush come standard helping to keep your belt clean
- Two-year limited warranty
- Ergonomic command center controls electric throttle, lights, start/stop, hydraulics and electric clutch with joystick steer for mover kit hydraulics
- Hopper with urethane seals, a stiffened hopper cloth, urethane flashing and a 32" parallel width for the full working length
- S-drive with pinch roller helps prevent over-tightening
- Sealed, straight down spout allows you to center trucks under the unit
- Straight down spout eliminates the need for additional down spouts, so conveyor can stay at a lower working angle, increasing capacity
- Motor available in both top mount (TM) or under mount (UM)

MOVER KIT FEATURES

- Adds an extra 15" of discharge height when compared to previous models
- All wheel drive
- 160° turning radius for tight yards

GCX ³	GCX ³ 1549 FMD
CAPACITY	Up to 10000 bph
TUBE GAUGE	10" OD x 12 ga
BELT TYPE	15" wide chevron
BELT LENGTH	110' 8"
LIFT	Hydraulic winch
FRAME TYPE	A-frame
AXLE	2 1/2" sq. x .125"
HUB	4-bolt on 5.0", 3.62" pilot
TIRES	4-bolt ST205/75D15
PARKING JACK	7000 lbs rating, top twist, 2 1/2" receiver, 25" travel
HOPPER DIMENSIONS	64 7/8" length x 30 3/4" width x 17 1/4" height
HP REQUIRED (WITH DRY WHEAT)	Vanguard 37 HP EFI
CONVEYOR WIDTH (HUB FACE TO FACE)	83.75"
CONVEYOR WEIGHT	3800 lbs

GCX ³	HEIGHT LOWERED	HEIGHT HALFWAY	HEIGHT RAISED	REACH LOWERED	REACH HALFWAY	REACH RAISED	HEIGHT AT LIFT ARMS HALFWAY	HEIGHT AT WHEELS RAISED	REACH AT LIFT ARMS HALFWAY	REACH AT WHEELS RAISED
GCX ³ 1549 FMD	9' 6" (2.899 m)	16' 1.750" (4.921 m)	20' 10.5" (6.363 m)	24' (7.315 m)	23' 8" (7.213 m)	23' 6.25" (7.169 m)	10' 1.5" (3.086 m)	11' 5.5" (3.493 m)	20' 0.25" (6.102 m)	22' 3.75" (6.801 m)

Heights measured from bottom of conveyor spout to ground.

GFX⁴SP

10" TUBE
15" BELT
UP TO 8,000 BPH
39' / 44' / 49' LENGTHS



FEATURES

No-nonsense discharge hood

- Grain flows straight down from the spout

Pinch roller design

- Allows for easier assembly, better belt traction and improved efficiency

Drive

- Comes gas over hydraulic with a 37 HP Vanguard engine

Self-propelled mover kit

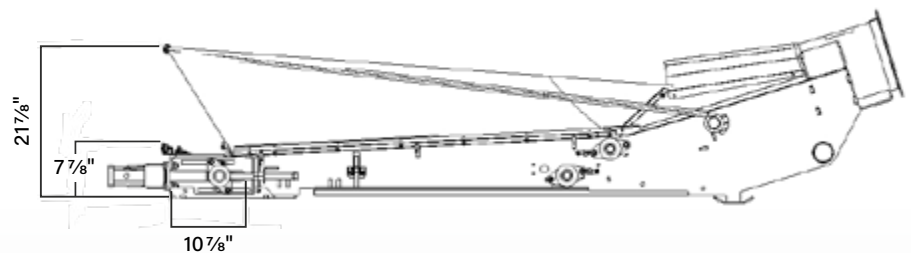
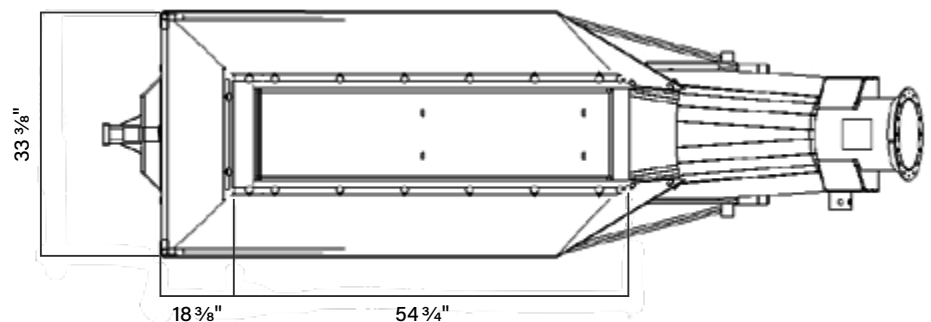
- Hydraulic steering and rugged all-terrain tires for easier bin access and tighter turning radius
- Makes moving around the yard easy with no lifting

Hopper and under hopper skid plate

- Includes a pivoting skid plate which protects the bottom of the belt from debris damage, and makes it easier for one person clean-out

FLTD - FIELD LOADER TOP DRIVE FEATURES

- Parallel hopper cloth stays 33 ³/₈" wide for the full working length
- Drive roller and pinch roller track together and are easier to access with a removable top plate





GFX ⁴ SP			
	1539	1544	1549
CAPACITY	Up to 8000 bph		
TUBE GAUGE	10" x 14 ga		
BELT TYPE	15" wide chevron		
BELT LENGTH	84' 4"	94' 4"	104' 4"
LIFT	Hydraulic winch		
FRAME TYPE	A-frame		
AXLE	2 ½" sq. x ⅛"		
HUB	4-bolt on 5.0", 3.62" pilot		
TIRES	4-bolt ST205/75D15		
PARKING JACK	7000 lbs rating, top twist, 2 ½" receiver, 25" travel		
HOPPER DIMENSIONS	54 ¾" length x 33 ⅜" width x 21 ⅞" height		
HP REQUIRED (WITH DRY WHEAT)	37 hp		
CONVEYOR WIDTH (HUB FACE TO FACE)	7.5' (90")		

GFX ⁴ SP	HEIGHT LOWERED	HEIGHT HALFWAY	HEIGHT RAISED	REACH LOWERED	REACH HALFWAY	REACH RAISED	HEIGHT AT LIFT ARMS HALFWAY	HEIGHT AT WHEELS RAISED	REACH AT LIFT ARMS HALFWAY	REACH AT WHEELS RAISED	HEIGHT AT 23° ANGLE TO BOTTOM OF SPOUT
1539	8' 10.75" (2.718 m)	15' 4.62" (4.705 m)	20' 4.5" (6.185 m)	18' 7.125" (5.645 m)	17' 9.75" (5.41 m)	17' 0.62" (5.15 m)	10' 2.37" (3.131 m)	11' 6.25" (3.512 m)	14' 9" (4.458 m)	16' 8.25" (5.067 m)	13' 2.3125" (4.02 m)
1544	10' 2" (3.099 m)	16' 3.25" (4.959 m)	20' 11.5" (6.388 m)	21' 0.25" (6.407 m)	20' 7" (6.274 m)	20' 1.75" (6.14 m)	10' 4.25" (3.156 m)	11' 6.25" (3.512 m)	17' 5" (5.309 m)	19' 7" (5.969 m)	15' 4.875" (4.70 m)
1549	12' (3.658 m)	17' 7" (5.359 m)	20' 10" (6.35 m)	21' 5.25" (6.534 m)	21' 1.75" (6.445 m)	21' 1" (6.426 m)	10' 4.75" (3.167 m)	11' 6" (3.505 m)	17' 10.75" (5.455 m)	20' 2.25" (6.153 m)	17' 4.125" (5.29 m)

Heights measured from bottom of conveyor spout to ground.

GFX⁴

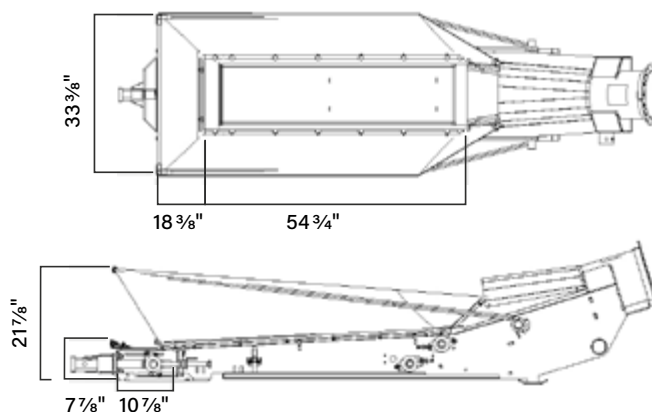
10" TUBE
15" BELT
UP TO 7,000 BPH
39' / 44' / 49' LENGTHS

FEATURES

- Grain flows straight down from the spout with the no-nonsense hood
- New pinch roller design allows for easier assembly, better belt traction and improved efficiency
- Available in electric, gas over hydraulic or hydraulic drives so you can move grain even when you don't have electricity
- Hopper lifting handle helps guide the conveyor into place
- Under hopper skid plate stops debris from touching the bottom of the belt, keeping it off the belt and protecting the belt from damage
 - **Ability to pivot skid plate makes it easier for one-person clean-out**
- Additional balance points to optimize hitch weight

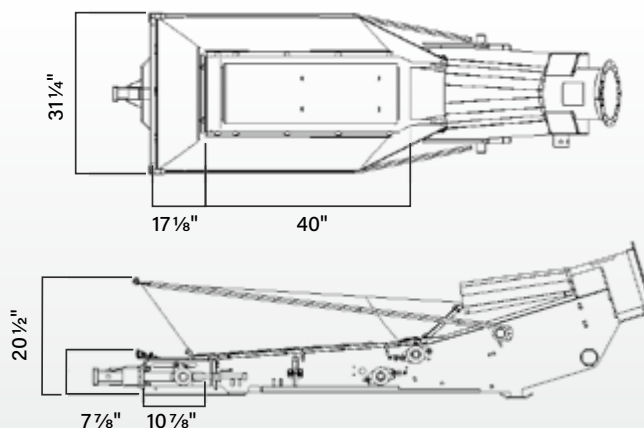
FLTD - FIELD LOADER TOP DRIVE FEATURES

- Parallel hopper cloth stays 33 ³/₈" wide for the full working length
- Drive roller and pinch roller track together and are easier to access with a removable top plate



SHORT - FIELD LOADER TOP DRIVE FEATURES

- Designed specifically to fit underneath even the lowest bin unloads
- Drive roller and pinch roller track together and are easier to access with a newly added removable top plate



GFX ⁴						
	1539 FLTD	1544 FLTD	1549 FLTD	1539 FLTD SHORT	1544 FLTD SHORT	1549 FLTD SHORT
CAPACITY	Up to 7000 bph					
TUBE GAUGE	10" x 14 ga					
BELT TYPE	15" wide chevron					
BELT LENGTH	84' 4"	94' 4"	104' 4"	81' 10"	91' 10"	101' 10"
LIFT	Hand or hydraulic winch					
FRAME TYPE	A-frame					
AXLE	2 ½" sq. x .125"					
HUB	4-bolt on 5.0", 3.62" pilot					
TIRES	4-bolt ST205/75D15					
PARKING JACK	1000 lbs rating, top twist, 2 ½" receiver, 15" travel					
HOPPER DIMENSIONS	54 ¾" length x 33 ⅝" width x 21 ⅞" height			40" length x 31 ¼" width x 20 ½" height		
HP REQUIRED (WITH DRY WHEAT)	Electric - 10	Electric - 10 / 12.5	Electric - 12.5 / 15	Electric - 10	Electric - 10 / 12.5	Electric - 12.5 / 15
CONVEYOR WIDTH (HUB FACE TO FACE)	7.5' (90")					
HITCH WEIGHT (WITH MOTOR INSTALLED)	80 lbs	90 lbs	90 lbs	80 lbs	80 lbs	90 lbs
CONVEYOR WEIGHT	1650 lbs	1700 lbs	1750 lbs	1575 lbs	1625 lbs	1675 lbs

	HEIGHT LOWERED	HEIGHT HALFWAY	HEIGHT RAISED	REACH LOWERED	REACH HALFWAY	REACH RAISED	HEIGHT AT LIFT ARMS HALFWAY	HEIGHT AT WHEELS RAISED	REACH AT LIFT ARMS HALFWAY	REACH AT WHEELS RAISED	HEIGHT AT 23° ANGLE TO BOTTOM OF SPOUT
1539 FLTD	8' 10.75" (2.718 m)	15' 4.62" (4.705 m)	20' 4.5" (6.185 m)	18' 7.125" (5.645 m)	17' 9.75" (5.41 m)	17' 0.62" (5.15 m)	10' 2.37" (3.131 m)	11' 6.25" (3.512 m)	14' 9" (4.458 m)	16' 8.25" (5.067 m)	13' 2.3125" (4.02 m)
1544 FLTD	10' 2" (3.099 m)	16' 3.25" (4.959 m)	20' 11.5" (6.388 m)	21' 0.25" (6.407 m)	20' 7" (6.274 m)	20' 1.75" (6.14 m)	10' 4.25" (3.156 m)	11' 6.25" (3.512 m)	17' 5" (5.309 m)	19' 7" (5.969 m)	15' 4.875" (4.70 m)
1549 FLTD	12' (3.658 m)	17' 7" (5.359 m)	20' 10" (6.35 m)	21' 5.25" (6.534 m)	21' 1.75" (6.445 m)	21' 1" (6.426 m)	10' 4.75" (3.167 m)	11' 6" (3.505 m)	17' 10.75" (5.455 m)	20' 2.25" (6.153 m)	17' 4.125" (5.29 m)
1539 FLTD SHORT	8' 10.75" (2.718 m)	15' 4.62" (4.705 m)	20' 4.5" (6.185 m)	18' 7.125" (5.645 m)	17' 9.75" (5.41 m)	17' 0.62" (5.15 m)	10' 2.37" (3.131 m)	11' 6.25" (3.512 m)	14' 9" (4.458 m)	16' 8.25" (5.067 m)	13' 2.3125" (4.02 m)
1544 FLTD SHORT	10' 2" (3.099 m)	16' 3.25" (4.959 m)	20' 11.5" (6.388 m)	21' 0.25" (6.407 m)	20' 7" (6.274 m)	20' 1.75" (6.14 m)	10' 4.25" (3.156 m)	11' 6.25" (3.512 m)	17' 5" (5.309 m)	19' 7" (5.969 m)	15' 4.875" (4.70 m)
1549 FLTD SHORT	12' (3.658 m)	17' 7" (5.359 m)	20' 10" (6.35 m)	21' 5.25" (6.534 m)	21' 1.75" (6.445 m)	21' 1" (6.426 m)	10' 4.75" (3.167 m)	11' 6" (3.505 m)	17' 10.75" (5.455 m)	20' 2.25" (6.153 m)	17' 4.125" (5.29 m)

Heights measured from bottom of conveyor spout to ground.

A-FRAMES AND LONG CONVEYORS

1500 SERIES

10" TUBE // 15" BELT
UP TO 6,000 BPH
35' - 100' LENGTHS

2000 SERIES

14" TUBE // 20" BELT
UP TO 9,000 BPH
45' - 120' LENGTHS

2400 SERIES

14" TUBE // 23.5" BELT
UP TO 14,000 BPH
65' - 120' LENGTHS

FEATURES

- Electric, hydraulic, PTO or gas drive options
- Gentle handling
- Low maintenance and long-lasting belt
- High capacity
- Low horsepower required
- A-frame undercarriage on 35'-55' lengths
- Hydraulic scissor lift on 65'-120' lengths
- Cable trussing on 55'-100' lengths
- Steel tube trussing on 105'-120' lengths
- Extendable axles on 85'-120' lengths
- Collapsible canvas hopper
- Optional self-propelled drive



1500 SERIES									
	1535 TD A-FRAME	1540 TD A-FRAME	1545 TD A-FRAME	1555 SD A-FRAME	1565 SD HYD	1575 SD HYD	1585 SD HYD	1590 SD HYD	15100 SD HYD
CAPACITY	Up to 6000 bph								
TUBE GAUGE	10" OD x 14 ga			10" OD x 12 ga					
BELT TYPE	15" wide chevron								
BELT LENGTH	70' 2"	80' 2"	90' 2"	115' 6"	135' 3"	155'	175'	185'	205'
TUBE TRUSSING	N/A			¾" steel aircraft cable					
LIFT	Hand winch				One 4" x 30 hydraulic cylinder		One 4" x 36 hydraulic cylinder		One 4" x 48 hydraulic cyliner
FRAME TYPE	A-frame				Hydraulic scissor lift				
AXLE	2 ½" sq. x .125"			2 ½" sq. x .188"	3" sq. x .188"		3" sq. x .375"		
HUB	4-bolt on 5.0", 3.62" pilot				6-bolt on 6.0", 4.62" pilot				
TIRES	4-bolt ST205/75D15				6-bolt ST205/ 75R15 6PL				
PTO SHAFT	N/A			Side PTO 35E 1 ½" x 75"; 540 rpm					
PARKING JACK	N/A			7000 lbs load rating, top twist, 2 ½" receiver, 25" travel					
HOPPER DIMENSIONS	37 ⅞" length x 27 ⅝" width at narrow end, 47 ¾" width at wide end x 29 15⁄16" height								
HP REQUIRED (WITH DRY WHEAT)	Electric - 7.5	Electric - 7.5	Electric - 10.0	PTO - 30 Electric - 10 Gas - 27	PTO - 30 Electric - 15 Gas - 27	PTO - 40 Electric - 20 Gas - 27	PTO - 40 Electric - 20 Gas - 35	PTO - 50 Electric - 25 Gas - 35	PTO - 50 Electric - 25 Gas - 35
CONVEYOR WIDTH (HUB FACE TO FACE)	83.125"			101.5"	126.375"	126.375"	132.5"	132.5"	132.5"
AXLE EXTENSION LENGTH	N/A						38"	38"	38"
CONVEYOR WEIGHT	1580 lbs	1680 lbs	1780 lbs	2360 lbs	3000 lbs	3260 lbs	3740 lbs	3850 lbs	4450 lbs

	HEIGHT LOWERED	HEIGHT HALFWAY	HEIGHT RAISED	REACH LOWERED	REACH HALFWAY	REACH RAISED	HEIGHT AT LIFT ARMS HALFWAY	HEIGHT AT WHEELS RAISED	REACH AT LIFT ARMS HALFWAY	REACH AT WHEELS RAISED
1535 TD A-FRAME	8' 3" (2.515 m)	15' 4.25" (4.68 m)	17' 5.25" (5.315 m)	13' 6.5" (4.128 m)	15' 4.25" (4.68 m)	13' 0.25" (3.969 m)	10' 1" (3.073 m)	11' 2.75" (3.423 m)	10' 9.75" (3.296 m)	13' 0.75" (3.981 m)
1540 TD A-FRAME	9' 9.25" (2.978 m)	14' 5" (4.394 m)	17' 9.5" (5.423 m)	14' 8.5" (4.483 m)	14' 3" (4.343 m)	15.2' (4.623 m)	10' 8.5" (3.264 m)	11' 6" (3.505 m)	12' 3.75" (3.753 m)	14' 3" (4.343 m)
1545 TD A-FRAME	11' 5.25" (3.493 m)	16' (4.877 m)	19' 1" (5.817 m)	17' 3" (5.258 m)	16' 7.5" (5.067 m)	15' 11" (4.851 m)	11' 3.5" (3.442 m)	12' (3.658 m)	15' 1.5" (4.61 m)	16' (4.877 m)
1555 TD A-FRAME	11' 0.25" (3.359 m)	20' 11" (6.375 m)	28' 0.5" (8.547 m)	24' 2" (7.366 m)	23' 3.5" (7.099 m)	22' 2.5" (6.769 m)	14' 5.75" (4.413 m)	16' 2" (4.928 m)	18' 4" (5.588 m)	22' 1.25" (6.737 m)
1565 SD HYD	9' 5.25" (2.876 m)	22' 9" (6.934 m)	33' 11" (10.338 m)	26' 8" (8.128 m)	25' 3.25" (7.703 m)	22' 10.75" (6.972 m)	14' 11" (4.547 m)	21' 7" (6.58 m)	25' 1.75" (7.664 m)	22' 10.75" (6.979 m)
1575 SD HYD	10' 10.5" (3.315 m)	25' (7.62 m)	39' (11.887 m)	35' 9.5" (10.909 m)	27' (8.23 m)	30' 8" (9.347 m)	14' 4.25" (4.375 m)	22' 3" (6.782 m)	33' 4" (10.16 m)	28' 1" (8.56 m)
1585 SD HYD	12' 4" (3.759 m)	28' 11.75" (8.833 m)	43' 6" (13.259 m)	41' 8" (12.7 m)	39' 9.75" (12.135 m)	35' (10.668 m)	15' 3.25" (4.655 m)	23' 4.5" (7.125 m)	39' 9.75" (12.135 m)	35' (10.668 m)
1590 SD HYD	14.9' (4.496 m)	30' 8.5" (9.36 m)	44.2' (13.462 m)	46.7' (14.199 m)	44' 5.75" (13.557 m)	39.5 (11.989 m)	15' 1.75" (4.616 m)	22' 6" (6.909 m)	44' 5.75" (13.557 m)	40' (12.192 m)
15100 SD HYD	11' 4" (3.454 m)	32' 11.5" (10.046 m)	50' 3" (15.316 m)	48' 4" (14.732 m)	45' 7.5" (13.735 m)	39' 3" (11.963 m)	17' 11.5" (5.474 m)	28' 4" (8.636 m)	45' 7.5" (13.907 m)	40' (12.192 m)

Heights measured from bottom of conveyor spout to ground.

2000 SERIES									
	2045 A-FRAME	2055 A-FRAME	2065 HYD	2075 HYD	2085 HYD	2095 HYD	20105 HYD	20110 HYD	20120 HYD
CAPACITY	Up to 9000 bph								
TUBE GAUGE	14"OD x 12 ga								
BELT TYPE	20" wide chevron ultimate								
BELT LENGTH	97' 10"	117' 10"	137' 10"	157' 10"	177' 10"	197' 10"	217' 10"	227' 10"	247' 10"
TUBE TRUSSING	N/A	¾" aircraft steel cable					3.5" x .120W round tubing		
LIFT	Hand winch		Two 4" x 30" hydraulic cyliners		Two 4" x 36" hydraulic cylinders		Three 4 ½" x 40" hydraulic clyinders		
FRAME TYPE	A-frame		Hydraulic scissor lift						
AXLE	3 ½" sq. x .188"								
HUB			6-bolt on 6", 4.62" pilot					6-bolt on 6", 4.62" pilot	
TIRES	ST205 75R 15 6PL		ST235 / 80R16, load range "E", max speed 120 km/h, max psi 80				ASM-6-bolt 12.5LX16 LRG		
PTO SHAFT	Side drive 35E 1 ½"x 75", 540 PTO Front drive 35E CV 540 PTO								
PARKING JACK	15000 lbs load rating, side twist, 2 ½" receiver, 24" travel								
HOPPER DIMENSIONS	37 ⅞" length x 37" width at narrow end, 48 ⅞" width at wide end x 23 ½" height								
HP REQUIRED (WITH DRY WHEAT)	Electric - 15	PTO - 50 Electric - 20	PTO - 60 Electric - 25	PTO - 60 Electric-30	PTO - 70 Electric - 30	PTO - 80 Electric - 40	PTO - 80 Electric - 40	PTO - 100 Electric - 50	PTO - 100 Electric - 50
CONVEYOR WIDTH (HUB FACE TO FACE)	86.375"	116.25"	132.5"				150"		
AXLE EXTENSION LENGTH	N/A		38"				32.5"		
CONVEYOR WEIGHT	3100 lbs	3650 lbs	4830 lbs	5130 lbs	5870 lbs	6130 lbs	7990 lbs	9160 lbs	9430 lbs

	HEIGHT LOWERED	HEIGHT HALFWAY	HEIGHT RAISED	REACH LOWERED	REACH HALFWAY	REACH RAISED	HEIGHT AT LIFT ARMS HALFWAY	HEIGHT AT WHEELS RAISED	REACH AT LIFT ARMS HALFWAY	REACH AT WHEELS RAISED
2045 A-FRAME	11' 7.5" (3.543 m)	17' 3.75" (5.277 m)	22' 1.5" (6.743 m)	22' 7.75" (6.896 m)	22' 2.25" (6.763 m)	21' 7.75" (6.598 m)	10' 9" (3.277 m)	11' 8.25" (3.562 m)	19' 9.75" (6.039 m)	21' 7.75" (6.598 m)
2055 A-FRAME	10' 11" (3.327 m)	19' 11.5" (6.083 m)	27' 2.25" (8.287 m)	24' 6.75" (7.487 m)	24' 8.5" (7.531 m)	25' 1" (7.645 m)	14' 7" (4.445 m)	16' 3" (4.953 m)	18' 7" (5.664 m)	22' 7" (6.883 m)
2065 HYD	8' 2.25" (2.496 m)	19' 5" (5.766 m)	31' 5.75" (9.595 m)	25' 9.75" (7.868 m)	25' (7.62 m)	22.3' (6.782 m)	13' 7.25" (4.147 m)	20' 10" (6.35 m)	25' (7.62 m)	23' 0.75" (7.029 m)
2075 HYD	10' 5" (3.175 m)	23' 4" (7.112 m)	37' 1" (11.303 m)	35' 9" (10.897 m)	34' 5" (10.49 m)	31' 6" (9.601 m)	13' 4" (4.064 m)	20' 7" (6.274 m)	34' 5" (10.49 m)	34' 5" (10.49 m)
2085 HYD	10' 1.5" (3.086 m)	21' 9.5" (6.642 m)	42' 9" (13.03 m)	38' 5" (11.709 m)	37' 2" (11.328 m)	32' 1" (9.779 m)	13' 2" (4.013 m)	25' 10" (7.874 m)	37' 2" (11.328 m)	32' 1" (9.779 m)
2095 HYD	11' 6.75" (3.524 m)	24' 7" (7.493 m)	47' 11" (14.605 m)	48' 4" (14.732 m)	46' 9.5" (14.262 m)	40' 7" (12.37 m)	13' 9.75" (4.21 m)	26' 5.75" (8.071 m)	46' 9.5" (14.262 m)	40' 7" (12.37 m)
20105 HYD	10' 3.75" (3.143 m)	35' 1" (10.693 m)	54' 7.25" (16.65 m)	46' 0.25" (14.027 m)	43' 7.5" (13.297 m)	39' 8.5" (12.103 m)	21' (6.401 m)	33' 4.75" (10.179 m)	42' 10" (13.056 m)	37' 3.75" (11.373 m)
20110 HYD	10' 10.75" (3.321 m)	36' 7.25" (11.157 m)	57' 5.5" (17.513 m)	52' (15.85 m)	49' 6.5" (15.1 m)	44' 11.75" (13.71 m)	20' 11.75" (6.395 m)	33' 4.75" (10.179 m)	48' 8.5" (14.846 m)	42' 7" (12.979 m)
20120 HYD	12' 1.25" (3.689 m)	40' 1" (12.217 m)	62' 9.5" (19.139 m)	61' 11.25" (18.878 m)	58' 11" (17.958 m)	53' 5.5" (16.294 m)	20' 11.75" (6.394 m)	33' 4.75" (10.179 m)	58' 1" (17.704 m)	51' 0.75" (15.564 m)

Heights measured from bottom of conveyor spout to ground.

2400 SERIES														
	2465 HYD		2475 HYD		2485 HYD		2495 HYD		24105 HYD		24110 HYD		24120 HYD	
CAPACITY	Up to 14000 bph													
TUBE GAUGE	14"OD x 12 ga													
BELT TYPE	23.5" wide chevron ultimate													
BELT LENGTH	140' 6"		160' 6"		180' 6"		200' 6"		220' 6"		230' 6"		250' 6"	
TUBE TRUSSING	½" aircraft steel cable								3.5" x .120W round tubing					
LIFT	Two 4" x 30" hydraulic cylinders				Two 4" x 30" hydraulic cylinders				Three 4 ½" x 40" hydraulic cylinders					
FRAME TYPE	Hydraulic scissor lift													
AXLE	3 ½" sq. x .188"													
HUB	6-bolt on 6", 4.62" pilot								6-bolt on 6", 4.62" pilot					
TIRES	ST235 / 80R16, load range "E"								6-bolt 12.5LX16 LRG					
PTO SHAFT	Side PTO option 35E 1 ½" x 75" PTO 1 ⅝" 6 spline output; Front PTO option 35E CAT 4 50 DEG. E CV drive shaft 1 ⅝" 6 spline output													
PARKING JACK	15000 lbs load rating, side twist, 2 ½" receiver, 24" travel													
HOPPER DIMENSIONS	51 ¾" length x 37 ¾" width at narrow end, 50 ¼" width at wide end x 38 ⅞" height													
HP REQUIRED (WITH DRY WHEAT)	PTO - 60 Electric - 25		PTO - 70 Electric - 30		PTO - 80 Electric - 30		PTO - 80 Electric - 40		PTO - 90 Electric - 40		PTO - 100 Electric - 50		PTO - 120 Electric - 50	
CONVEYOR WIDTH (HUB FACE TO FACE)	132.5"								150"					
AXLE EXTENSION LENGTH	38"								32.5"					
CONVEYOR WEIGHT	5080 lbs		5400 lbs		6150 lbs		6630 lbs		8310 lbs		9500 lbs		9770 lbs	

	HEIGHT LOWERED	HEIGHT HALFWAY	HEIGHT RAISED	REACH LOWERED	REACH HALFWAY	REACH RAISED	HEIGHT AT LIFT ARMS HALFWAY	HEIGHT AT WHEELS RAISED	REACH AT LIFT ARMS HALFWAY	REACH AT WHEELS RAISED
2465	8' 4.25" (2.546 m)	19' 7.25" (5.975 m)	31' 8" (9.652 m)	26' 6.75" (8.096 m)	25' 8.75" (7.842 m)	24' 0.5" (7.328 m)	13' 1.5" (4.102 m)	21' 5.75" (6.547 m)	25' 8.75" (7.842 m)	22' 2.5" (6.769 m)
2475	14' 3" (4.343 m)	22' 9.75" (6.953 m)	36' 3" (11.049 m)	35' 9.5" (10.9093 m)	34' 1.5" (10.401 m)	31' 7.25" (9.632 m)	12' 7.5" (3.848 m)	21' 5.5" (6.541 m)	34' 1.5" (10.401 m)	29' 9.25" (9.074 m)
2485	13' 9" (4.176 m)	22' (6.706 m)	42' 4" (12.893 m)	38' 8" (11.765 m)	38' 0.5" (11.595 m)	32' 7" (9.936 m)	13' 4" (4.064 m)	25' 6" (7.772 m)	38' 0.5" (11.595 m)	33' 4" (10.16 m)
2495	11' 3" (3.429 m)	24' 3" (7.391 m)	47' 7" (14.503 m)	49' 1" (14.961 m)	47' 9" (14.554 m)	41' 11.75" (12.795 m)	13' 0.5" (3.975 m)	25' 6" (7.772 m)	47' 9" (14.554 m)	41' 11.75" (12.795 m)
24105	10' 3.5" (3.137 m)	34' 9.75" (10.611 m)	54' 8.75" (16.681 m)	47' 8.5" (14.542 m)	45' 7.75" (13.907 m)	41' 9.5" (12.891 m)	20' 9.5" (6.337 m)	33' 1.5" (10.097 m)	44' 8.75" (13.633 m)	39' 1.75" (11.932 m)
24110	10' 10.5" (3.315 m)	36' 6.5" (11.138 m)	57' 4" (17.475 m)	52' 7.75" (16.046 m)	50' 4" (15.342 m)	46' (14.021 m)	20' 9.5" (6.337 m)	33' 1.75" (10.103 m)	49' 5" (15.062 m)	43' 4.75" (13.227 m)
24120	12' 1" (3.683 m)	40' (12.192 m)	62' 7" (19.075 m)	62' 7" (19.075 m)	59' 8.5" (18.199 m)	54' 6" (16.612 m)	20' 9.5" (6.337 m)	33' 1.5" (10.1 m)	58' 9" (17.907 m)	51' 10" (15.799 m)

Heights measured from bottom of conveyor spout to ground.

1500 SWINGAWAY										
	1565 SA		1575 SA		1585 SA		1590 SA		15100 SA	
CAPACITY	Up to 6000 bph									
TUBE GAUGE	10" OD x 12 ga									
BELT TYPE	15" wide chevron									
BELT LENGTH	135' 3"		155'		175'		185'		205'	
TUBE TRUSSING	¾" steel aricraft cable									
LIFT	One 4" x 30 cylinder				One 4" x 36 cylinder				One 4" x 48 cylinder	
FRAME TYPE	Hydraulic scissor lift									
AXLE	3" sq. x .188"				3" sq. x .375"					
HUB	6-bolt on 6.0" B.C.D., 4.62" pilot									
TIRES	6-bolt ST205/ 75R15 6PL									
DRIVE OPTIONS	Side or Front PTO									
PARKING JACK	7000 lbs load rating, top twist, 2 ½" receiver, 25 " travel									
HOPPER DIMENSIONS	N/A, enclosed with swingaway									
HP REQUIRED (WITH DRY WHEAT)	PTO - 30		PTO - 40		PTO - 40		PTO - 50		PTO - 50	
CONVEYOR WIDTH (HUB FACE TO FACE)	126.375"		126.375"		132.5"		132.5"		132.5"	
AXLE EXTENSION LENGTH	N/A				38"		38"		38"	
CONVEYOR WEIGHT	3000 lbs		3260 lbs		3740 lbs		3850 lbs		4450 lbs	
SWINGAWAY WEIGHT	1200 lbs									

	HEIGHT LOWERED	HEIGHT HALFWAY	HEIGHT RAISED	REACH LOWERED	REACH HALFWAY	REACH RAISED	HEIGHT AT LIFT ARMS HALFWAY	HEIGHT AT WHEELS RAISED	REACH AT LIFT ARMS HALFWAY	REACH AT WHEELS RAISED
1565 SA	9' 5.25" (2.876 m)	22' 9" (6.934 m)	33' 11" (10.338 m)	26' - 8" (8.128 m)	25' 3.25" (7.703 m)	22' 10.75" (6.972 m)	14' 11" (4.547 m)	21' 7" (6.58 m)	25' 1.75" (7.664 m)	22' 10.75" (6.979 m)
1575 SA	10' 10.5" (3.315 m)	25' (7.62 m)	39' 0" (11.887 m)	35' 9.5" (10.909 m)	27' (8.23 m)	30' 8" (9.347 m)	14' 4.25" (4.375 m)	22' 3" (6.782 m)	33' 4" (10.16 m)	28' 1" (8.56 m)
1585 SA	12' 4" (3.759 m)	28' 11.75" (8.833 m)	43' 6" (13.259 m)	41' 8" (12.7 m)	39' 9.75" (12.135 m)	35' 0" (10.668 m)	15' 3.25" (4.655 m)	23' 4.5" (7.125 m)	39' 9.75" (12.135 m)	35' (10.668 m)
1590 SA	14.9' (4.496 m)	30' 8.5" (9.36 m)	44.2' (13.462 m)	46.7' (14.199 m)	44' 5.75" (13.557 m)	39.5 (11.989 m)	15' 1.75" (4.616 m)	22' 6" (6.909 m)	44' 5.75" (13.557 m)	40' (12.192 m)
15100 SA	11' 4" (3.454 m)	32' 11.5" (10.046 m)	50' 3" (15.316 m)	48' 4" (14.732 m)	45' 7.5" (13.735 m)	39' 3" (11.963 m)	17' 11.5" (5.474 m)	28' 4" (8.636 m)	45' 7.5" (13.907 m)	40' (12.192 m)

Heights measured from bottom of conveyor spout to ground.

2000 SWINGAWAY														
	2065 SA		2075 SA		2085 SA		2095 SA		20105 SA		20110 SA		20120 SA	
CAPACITY	Up to 9000 bph													
TUBE GAUGE	14"OD x 12 ga													
BELT TYPE	20" wide chevron ultimate													
BELT LENGTH	137' 10"		157' 10"		177' 10"		197' 10"		217' 10"		227' 10"		247' 10"	
TUBE TRUSSING	¾" aircraft steel cable								Ridgid 3.5" x .120W round tubing					
LIFT	Two 4" x 30" cylinders			Two 4" x 36" cylinders					Three 4 ½" x 40" cylinders					
FRAME TYPE	Hydraulic scissor lift													
AXLE	3 ½" sq. x .188"													
HUB	6-bolt on 6" B.C.D., 4.62" pilot								6-bolt on 6" B.C.D., 4.62" pilot					
TIRES	ST235 / 80R16, load range "E"								6-bolt 12.5L x 16 LRG					
PTO SHAFT	Side PTO option 35E 1 ½" x 75", PTO 1 ⅝" 6 spline output: Front PTO option 35E CAT 4 50 DEG. E CV drive shaft 1 ⅝" 6 spline output													
PARKING JACK	15000 lbs load rating, side twist, 2 ½" receiver, 24" travel													
HOPPER DIMENSIONS	N/A, enclosed with swingaway													
HP REQUIRED (WITH DRY WHEAT)	PTO - 60		PTO - 60		PTO - 70		PTO - 80		PTO - 80		PTO - 100		PTO - 100	
CONVEYOR WIDTH (HUB FACE TO FACE)	132.5"								150"					
AXLE EXTENSION LENGTH	38"								32.5"					
CONVEYOR WEIGHT	4830 lbs		5130 lbs		5870 lbs		6130 lbs		7990 lbs		9160 lbs		9430 lbs	
SWINGAWAY WEIGHT	1240 lbs													

	HEIGHT LOWERED	HEIGHT HALFWAY	HEIGHT RAISED	REACH LOWERED	REACH HALFWAY	REACH RAISED	HEIGHT AT LIFT ARMS HALFWAY	HEIGHT AT WHEELS RAISED	REACH AT LIFT ARMS HALFWAY	REACH AT WHEELS RAISED
2065 SA	8' 2.25" (2.496 m)	19' 5" (5.766 m)	31' 5.75" (9.595 m)	25' 9.75" (7.868 m)	25' (7.62 m)	22.3' (6.782 m)	13' 7.25" (4.147 m)	20' 10" (6.35 m)	25' (7.62 m)	23' 0.75" (7.029 m)
2075 SA	10' 5" (3.175 m)	23' 4" (7.112 m)	37' 1" (11.303 m)	35' 9" (10.897 m)	34' 5" (10.49 m)	31' 6" (9.601 m)	13' 4" (4.064 m)	20' 7" (6.274 m)	34' 5" (10.49 m)	34' 5" (10.49 m)
2085 SA	10' 1.5" (3.086 m)	21' 9.5" (6.642 m)	42' 9" (13.03 m)	38' 5" (11.709 m)	37' 2" (11.328 m)	32' 1" (9.779 m)	13' 2" (4.013 m)	25' 10" (7.874 m)	37' 2" (11.328 m)	32' 1" (9.779 m)
2095 SA	11' 6.75" (3.524 m)	24' 7" (7.493 m)	47' 11" (14.605 m)	48' 4" (14.732 m)	46' 9.5" (14.262 m)	40' 7" (12.37 m)	13' 9.75" (4.21 m)	26' 5.75" (8.071 m)	46' 9.5" (14.262 m)	40' 7" (12.37 m)
20105 SA	10' 3.75" (3.143 m)	35' 1" (10.693 m)	54' 7.25" (16.65 m)	46' 0.25" (14.027 m)	43' 7.5" (13.297 m)	39' 8.5" (12.103 m)	21' (6.401 m)	33' 4.75" (10.179 m)	42' 10" (13.056 m)	37' 3.75" (11.373 m)
20110 SA	10' 10.75" (3.321 m)	36' 7.25" (11.157 m)	57' 5.5" (17.513 m)	52' (15.85 m)	49' 6.5" (15.1 m)	44' 11.75" (13.71 m)	20' 11.75" (6.395 m)	33' 4.75" (10.179 m)	48' 8.5" (14.846 m)	42' 7" (12.979 m)
20120 SA	12' 1.25" (3.689 m)	40' 1" (12.217 m)	62' 9.5" (19.139 m)	61' 11.25" (18.878 m)	58' 11" (17.958 m)	53' 5.5" (16.294 m)	20' 11.75" (6.394 m)	33' 4.75" (10.179 m)	58' 1" (17.704 m)	51' 0.75" (15.564 m)

Heights measured from bottom of conveyor spout to ground.

2400 SWINGAWAY							
	2465 SA	2475 SA	2485 SA	2495 SA	24105 SA	24110 SA	24120 SA
CAPACITY	Up to 14000 bph						
TUBE GAUGE	14"OD x 12 ga						
BELT TYPE	23.5" chevron ultimate						
BELT LENGTH	140' 6"	160' 6"	180' 6"	200' 6"	220' 6"	230' 6"	250' 6"
TUBE TRUSSING	½" aircraft steel cable				Rigid 3.5" x .120W round tubing		
LIFT	Two 4" x 30" cylinders		Two 4" x 36" cylinders		Three 4 ½" x 40" cylinders		
FRAME TYPE	Hydraulic scissor lift						
AXLE	3 ½" sq. x .188"						
HUB	6-bolt on 6", 4.62" pilot				6-bolt on 6", 4.62" pilot		
TIRES	ST235 / 80R16, load range "E"				ASM-6BLT 12.5LX16 LRG		
PTO SHAFT	Side PTO option 35E 1 ½" x 75", PTO 1 ⅜" 6 spline output: Front PTO option 35E CAT 4 50 DEG. E CV drive shaft 1 ⅜" 6 spline output						
PARKING JACK	15000 lbs load rating, side twist, 2 ½" receiver, 24" travel						
HOPPER DIMENSIONS	N/A, enclosed with swingaway						
HP REQUIRED (WITH DRY WHEAT)	PTO - 60	PTO - 70	PTO - 80	PTO - 80	PTO - 90	PTO - 100	PTO - 120
CONVEYOR WIDTH (HUB FACE TO FACE)	132.5"				150"		
AXLE EXTENSION LENGTH	38"				32.5"		
CONVEYOR WEIGHT	5080 lbs	5400 lbs	6150 lbs	6630 lbs	8310 lbs	9500 lbs	9770 lbs
SWINGAWAY WEIGHT	1300 lbs						

	HEIGHT LOWERED	HEIGHT HALFWAY	HEIGHT RAISED	REACH LOWERED	REACH HALFWAY	REACH RAISED	HEIGHT AT LIFT ARMS HALFWAY	HEIGHT AT WHEELS RAISED	REACH AT LIFT ARMS HALFWAY	REACH AT WHEELS RAISED
2465 SA	8' 4.25" (2.546 m)	19' 7.25" (5.975 m)	31' 8" (9.652 m)	26' 6.75" (8.096 m)	25' 8.75" (7.842 m)	24' 0.5" (7.328 m)	13' 1.5" (4.102 m)	21' 5.75" (6.547 m)	25' 8.75" (7.842 m)	22' 2.5" (6.769 m)
2475 SA	14' 3" (4.343 m)	22' 9.75" (6.953 m)	36' 3" (11.049 m)	35' 9.5" (10.9093 m)	34' 1.5" (10.401 m)	31' 7.25" (9.632 m)	12' 7.5" (3.848 m)	21' 5.5" (6.541 m)	34' 1.5" (10.401 m)	29' 9.25" (9.074 m)
2485 SA	13' 9" (4.176 m)	22' (6.706 m)	42' 4" (12.893 m)	38' 8" (11.765 m)	38' 0.5" (11.595 m)	32' 7" (9.936 m)	13' 4" (4.064 m)	25' 6" (7.772 m)	38' 0.5" (11.595 m)	33' 4" (10.16 m)
2495 SA	11' 3" (3.429 m)	24' 3" (7.391 m)	47' 7" (14.503 m)	49' 1" (14.961 m)	47' 9" (14.554 m)	41' 11.75" (12.795 m)	13' 0.5" (3.975 m)	25' 6" (7.772 m)	47' 9" (14.554 m)	41' 11.75" (12.795 m)
24105 SA	10' 3.5" (3.137 m)	34' 9.75" (10.611 m)	54' 8.75" (16.681 m)	47' 8.5" (14.542 m)	45' 7.75" (13.907 m)	41' 9.5" (12.891 m)	20' 9.5" (6.337 m)	33' 1.5" (10.097 m)	44' 8.75" (13.633 m)	39' 1.75" (11.932 m)
24110 SA	10' 10.5" (3.315 m)	36' 6.5" (11.138 m)	57' 4" (17.475 m)	52' 7.75" (16.046 m)	50' 4" (15.342 m)	46' (14.021 m)	20' 9.5" (6.337 m)	33' 1.75" (10.103 m)	49' 5" (15.062 m)	43' 4.75" (13.227 m)
24120 SA	12' 1" (3.683 m)	40' (12.192 m)	62' 7" (19.075 m)	62' 7" (19.075 m)	59' 8.5" (18.199 m)	54' 6" (16.612 m)	20' 9.5" (6.337 m)	33' 1.5" (10.1 m)	58' 9" (17.907 m)	51' 10" (15.799 m)

Heights measured from bottom of conveyor spout to ground.

GCX² 1515

LOW PROFILE TRANSFER



FEATURES

- 7 ½" hopper clearance;
9" clearance at transition
- 28" discharge height
- 30" x 75" collapsible hopper
- Hydraulic, electric, or gas drive options

GCX² 1515

BCX² 1515 LOW PROFILE TRANSFER

CAPACITY	Up to 3800 bph
TUBE GAUGE	10" OD x 12 ga
BELT TYPE	15" wide chevron
BELT LENGTH	32' 8"
AXLE	2" sq. x .188"
HUB	4-bolt on 4", 2.50" pilot
TIRES	570 x 8
HOPPER DIMENSIONS	59" length x 20" width on narrow end, 33" width on wide end x 22 1/16" height
HP REQUIRED (WITH DRY WHEAT)	Electric - 5 Gas - 9
CONVEYOR WIDTH (HUB FACE TO FACE)	45.6"
CONVEYOR WEIGHT	642 lbs

	HEIGHT LOWERED	HEIGHT HALFWAY	HEIGHT RAISED	REACH LOWERED	REACH HALFWAY	REACH RAISED	HEIGHT AT LIFT ARMS HALFWAY	HEIGHT AT WHEELS RAISED	REACH AT LIFT ARMS HALFWAY	REACH AT WHEELS RAISED
GCX ² 1515 LOW PROFILE TRANSFER	2' 7.75" (.806 m)	N/A	N/A	6' 6.5" (2 m)	N/A	N/A	N/A	N/A	N/A	N/A

The transfer has only one position.
Heights measured from bottom of conveyor spout to ground.

TCX

8" TUBE
12" BELT
UP TO 3,800 BPH
22' / 27' / 32' LENGTHS



FEATURES

- 2-Ply chevron belt with poly slider backing
- 205-75-14 tires
- Collapsible intake hopper
- Manual lift winch
- Standard with weather guards
- Poly return rollers
- Powder coat paint

TCX			
	1222 TD	1227 TD	1232 TD
CAPACITY	Up to 3800 bph		
TUBE GAUGE	8" OD x 14 ga		
BELT TYPE	12" wide chevron		
BELT LENGTH	46' 5"	56' 2"	66' 3"
LIFT	Hand winch		
FRAME TYPE	A-frame		
AXLE	2" sq. x .188"		
HUB	5-bolt on 4.5", 3.31" pilot		
TIRES	205/75-14		
PTO SHAFT	N/A		
PARKING JACK	1000 lbs load rating, top twist, 2 ½" receiver, 15" travel		
HOPPER DIMENSIONS	33 ¾" length x 19 ¾" width on narrow end, 34 ½" width on wide end x 30 ½" height		
HP REQUIRED (WITH DRY WHEAT)	Electric - 5		
CONVEYOR WIDTH (HUB FACE TO FACE)	84.375"		
CONVEYOR WEIGHT	1000 lbs	1030 lbs	1150 lbs

TCX	HEIGHT LOWERED	HEIGHT HALFWAY	HEIGHT RAISED	REACH LOWERED	REACH HALFWAY	REACH RAISED	HEIGHT AT LIFT ARMS HALFWAY	HEIGHT AT WHEELS RAISED	REACH AT LIFT ARMS HALFWAY	REACH AT WHEELS RAISED
1222 TD	8' 2.25" (2.495 m)	9' 6.75" (2.915 m)	10' 8.75" (3.27 m)	7' 7.75" (2.33 m)	7' 4" (2.235 m)	7' 0.25" (2.14 m)	7' 2" (2.184 m)	7' 5" (2.26 m)	7' 1.75" (2.178 m)	7' 0.25" (2.14 m)
1227 TD	9' 1" (2.769 m)	13' 1" (3.989 m)	15' 11.25" (4.858 m)	9' 2.75" (2.813 m)	8' 6.25" (2.597 m)	7' 8.75" (2.356 m)	9' 1" (2.769 m)	8' 11" (2.718 m)	9' 1.75" (2.788 m)	11' 4" (3.454 m)
1232 TD	10' 3.5" (3.137 m)	13' 9.75" (4.21 m)	16' 10.25" (5.137 m)	9' 8.5" (2.959 m)	9' 9.25" (2.978 m)	9' 9.75" (2.99 m)	10' 4" (3.15 m)	10' 7" (3.226 m)	9' 4.5" (2.858 m)	9' 10" (3 m)

Heights measured from bottom of conveyor spout to ground.



AGI is a global leader in supplying farm and commercial customers with the manufacturing, planning, and engineering of full equipment solutions for grain, seed, fertilizer, feed, and food. AGI's expertise enables the storage, blending, mixing, conveying, conditioning, processing, and protection of agricultural products and inputs worldwide.

Your safety is our highest priority.

Please read and understand the operator's manual and safety decals before using. Use and maintain products properly, and do not modify. Keep guards in place when operating and follow all product manuals and safety decals. For all AGI products, if guards, safety decals, or manuals are damaged or missing, contact your AGI sales or dealer representative for replacements. Images and information contained in this brochure are presented for general information.

AGI and the AGI logo, are trademarks of Ag Growth International Inc.

198 Commerce Drive, Winnipeg, Manitoba, Canada R3P 0Z6

P 855.432.1990

     @aggrowthintl

AGGROWTH.COM