



Smoothwall Silos

Engineered for Efficiency and Food Safety

Smooth walled silos

Designed with our customers in mind.

AGI's professionally engineered smoothwall hopper bottom silos provide years of trouble-free clean-out and superior protection. Worldwide, our silos offer one of the best values for money in smoothwall storage.

Easy, trouble-free clean-out

Our silos are designed with an optimal cone slope ranging from 40° to 60°, tailored to the specific characteristics of the stored material. This design minimizes product hang-ups, which helps prevent contamination from residual product, mold or insects due to incomplete clean-out, ensuring safer and more efficient silo operation.

Long-lasting finish

AGI employs advanced finishing processes on all smoothwall silos to provide exceptional protection against environmental exposure and corrosion. The result is a durable, chemical-resistant and scratch-resistant finish, ideal for food-grade storage under demanding weather and processing conditions.

Optimal strength

Constructed from heavy-gauge steel, AGI smoothwall silos are expertly assembled to form concentrically perfect bins with smooth joints, ensuring structural integrity and an attractive appearance. The standard exterior leg design enhances strength where it's most needed, optimizing the distribution of vertical load onto the cone's legs for improved performance.



Features

Designed and manufactured with precision, our silos are equipped with a range of advanced features to ensure optimal performance

Square or Round bin configurations: Optimized to provide maximum storage volume with minimum building space.

Pressed Top and Bottom Hopper Cone Sheets: Enhances structural integrity and reliability.

FDA-Compliant Sealing: Ensures safe and secure storage of ingredients.

Explosion Protection: With reduced pressure for enhanced safety (Calculated PRed of 0.5 b).

Customized Storage Capacity: Up to 200 m³ to meet your needs.

Custom Cone Designs: Mass Flow, Funnel Flow, or Chisel Shape to meet the needs of your product.

Other Features

- Level sensors
- Explosion vents
- Manholes
- Guard rails
- Supply and extraction machinery
- Supporting frames
- Cladding/Roofing



Accessories

Enhance functionality and safety with our extensive range of accessories. Each accessory is designed to improve efficiency and ensure seamless operation.

A. Top Roof Manway

Provides easy access for inspection and maintenance.

B. Lower Inspection Hatch

Facilitates easy monitoring and cleaning of stored product, ensuring consistent quality.

C. Integral Spout Connections

Simplifies the filling and emptying process, minimizing waste and improving operational efficiency.

D. Safety Cages

Ensures secure access to elevated areas.

E. Custom Cone Slopes

Tailored to the commodity being stored.

F. Heavy-duty two-ring and three-ring steel foundations

Offers robust support and stability.

G. Explosion protection exhaust (top roof)

For venting pressure and gases upwards.

H. Explosion protection exhaust (side wall)

Localized venting of pressure where pressure might build up unevenly.

I. Leg extensions

Increased clearance, improved material flow and stability.

J. Impact Vibrator

Assists in the removal of dust and residue after product has been emptied from the bin.

K. Vacuum Filter

Maintains optimal air quality outside the silo, reducing the risk of contamination and maintaining a safe environment.

L. Pressure Control Safety Valve

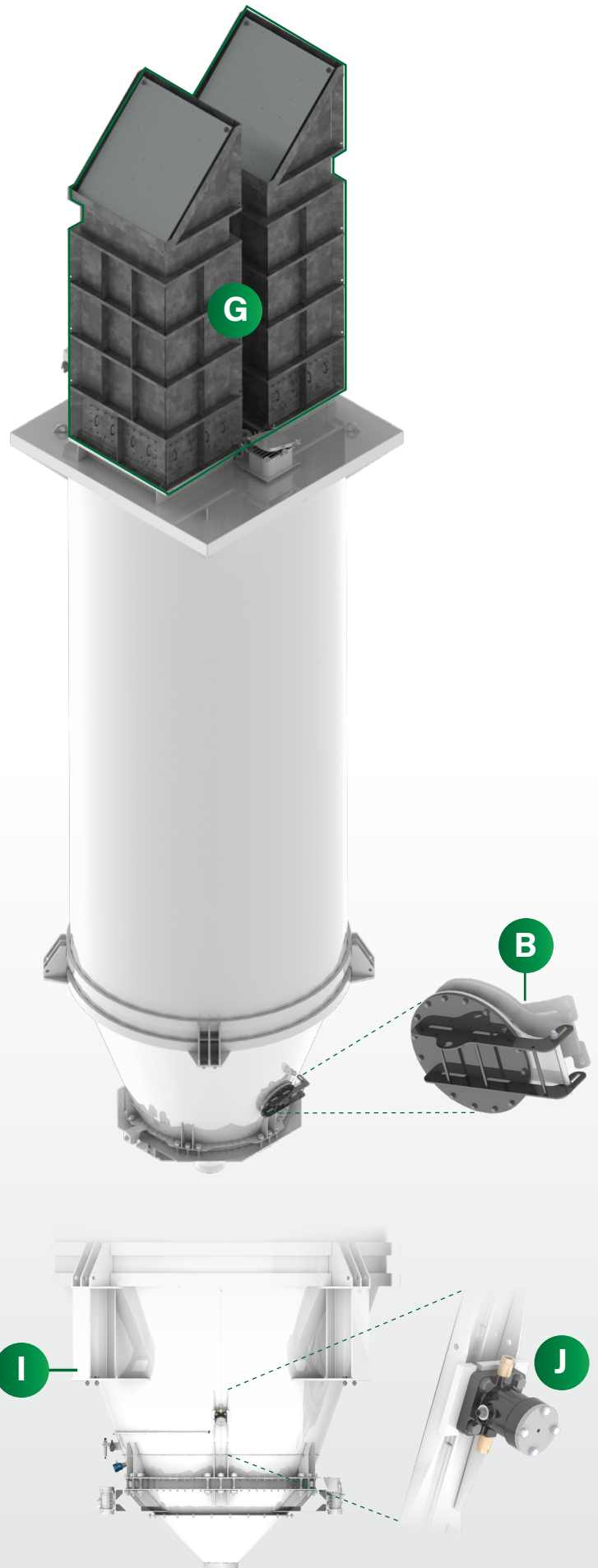
Prevents over-pressure within the silo to ensure safe and reliable operation.

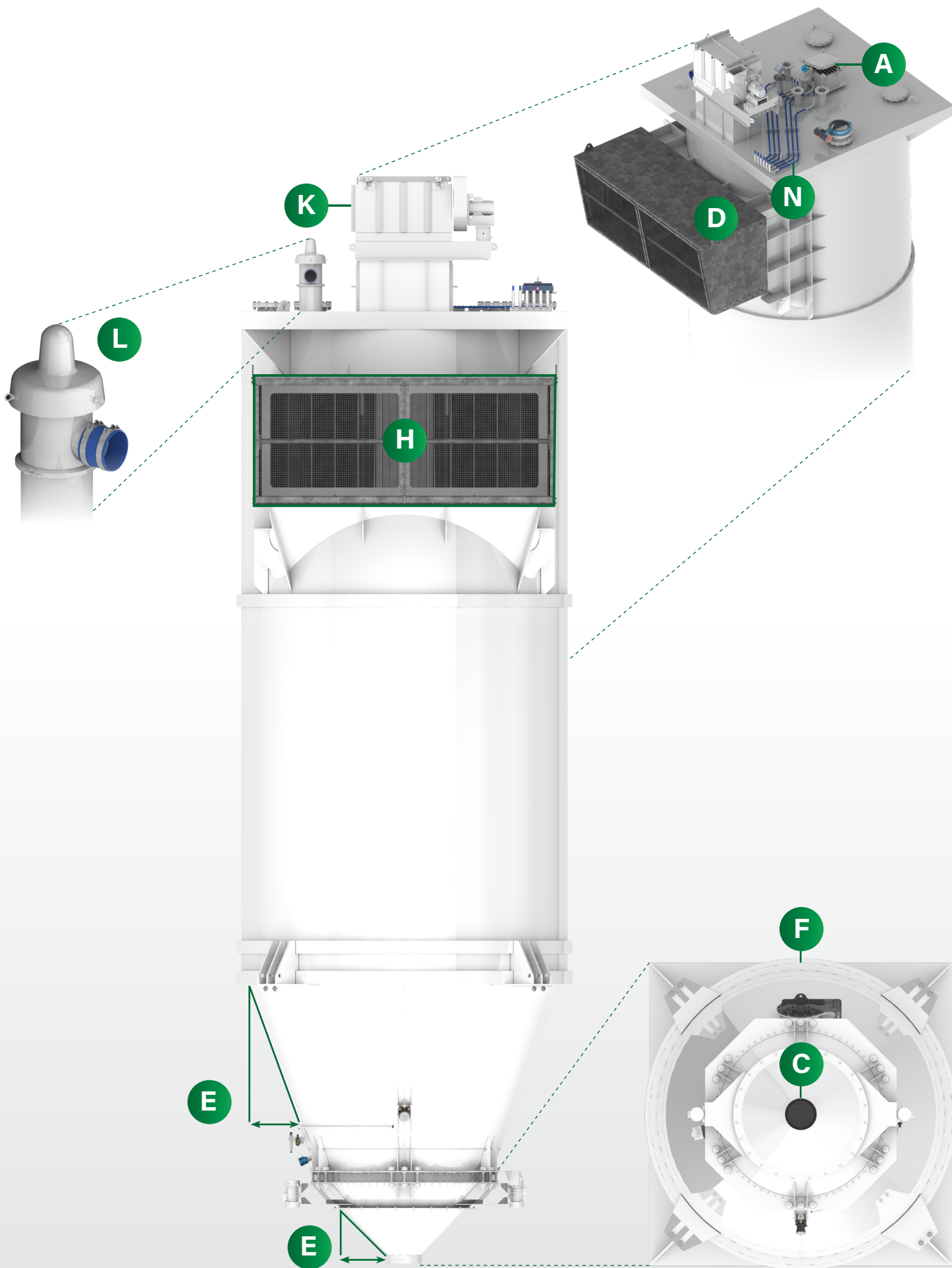
M. Auger boots

Ensures efficient material handling and transfer.

N. Pre-Embedded Conduit and Air Lines

Pre-installed electrical conduit and compressed air lines offer a clean, streamlined design for enhanced efficiency during setup and operation.







Integrated food and beverage manufacturing solutions

AGI offers a full menu of food and beverage manufacturing solutions, each of which can be tailored to meet your specific needs, and your budget. From standalone offerings to providing full turnkey solutions, our team has the experience and expertise to provide integrated solutions.

Explore our complete offerings:



Consulting



**Millwrighting
and Installation**



Engineering



**Turnkey
Solutions**



**Project
Management
and Execution**



**After-Sales
Service**



**Equipment
Supply**

One partner to support you throughout the process.

AGI works as an extension of your team, aligning with your goals, standards, budgets, and timelines.

Global footprint.

We leverage our expertise to navigate diverse environments, ensuring smooth project execution worldwide.

Standalone, integrated and turnkey solutions.

AGI adapts to your structure and can work on select project stages or manage the entire project for you.

Comprehensive capabilities and equipment.

Decades of industry experience and AGI's manufacturing expertise ensure industry-leading for your project.



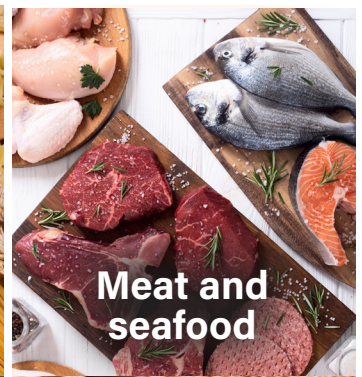
**Food
ingredients**



**Bakery and
confection**



Pastas



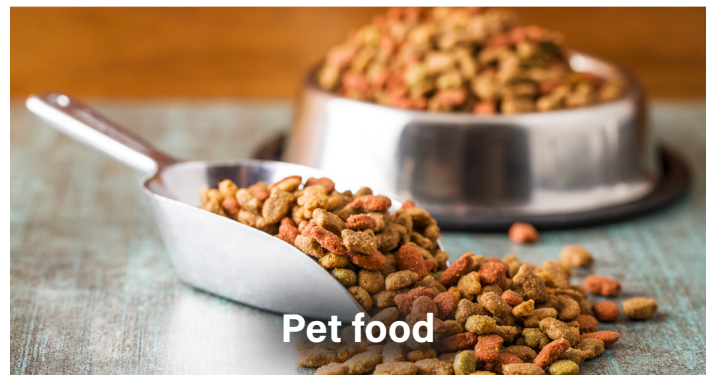
**Meat and
seafood**



**Liquid and
beverage**



**Grains and
pulses**



Pet food



AGI is a global leader in supplying farm and commercial customers with the manufacturing, planning, and engineering of full equipment solutions for grain, seed, fertilizer, feed, and food. AGI's expertise enables the storage, blending, mixing, conveying, conditioning, processing, and protection of agricultural products and inputs worldwide.



Your safety is our highest priority.

Please read and understand the operator's manual and safety decals before using. Use and maintain products properly, and do not modify. Keep guards in place when operating and follow all product manuals and safety decals. For all AGI products, if guards, safety decals, or manuals are damaged or missing, contact your AGI sales or dealer representative for replacements. Images and information contained in this brochure are presented for general information.

AGI, and the AGI logo, are trademarks of Ag Growth International Inc.

198 Commerce Drive, Winnipeg, Manitoba, Canada R3P 0Z6

E: food@aggrowth.com

[YouTube](#) [X](#) [LinkedIn](#) [Facebook](#) [Instagram](#) @aggrowthintl | @agifood

AGGROWTH.COM