

**AGI BATCO**  
**BELT CONVEYORS**  
**AND ACCESSORIES**





# UCX<sup>3</sup>

10" U-TROUGH TUBE  
15" BELT  
UP TO 12,500 BPH  
49' LENGTH



## FEATURES

- All grain commodity system suitable for all seed types, including oil seeds
- Easy to use spray and run wash system removes debris and residue on the back side of the belt from tough to wash commodities
- Two belt scrapers and one belt brush come standard helping to keep your belt clean
- Two-year limited warranty
- Ergonomic command center controls electric throttle, lights, start/stop, hydraulics and electric clutch with joystick steer for mover kit hydraulics
- Hopper with urethane seals, a stiffened hopper cloth, urethane flashing and a 32" parallel width for the full working length
- S-drive with pinch roller helps prevent over-tightening
- Sealed, straight down spout allows you to center trucks under the unit
- Straight down spout eliminates the need for additional down spouts, so conveyor can stay at a lower working angle, increasing capacity
- Sealed edge belt limits leakage
- 40 HP EFI Vanguard motor and triple banded drive belts with spring loaded tensioners

## MOVER KIT FEATURES

- Adds an extra 15" of discharge height when compared to previous models
- All wheel drive
- 160° turning radius for tight yards

### UCX<sup>3</sup>

#### UCX<sup>3</sup> 1549 FMD W/ HANGING GAS

CAPACITY	Up to 12500 bph
TUBE GAUGE	Formed 12 ga laser cut U-trough
BELT TYPE	15" wide Direct-X
BELT LENGTH	110' 8"
LIFT	Hydraulic winch
FRAME TYPE	A-frame
AXLE	2 ½" sq. x .125"
HUB	4-bolt on 5.0", 3.62" pilot
TIRES	4-bolt ST205/75D15
PARKING JACK	7000 lbs rating, top twist 2 ½" receiver, 25" travel
HOPPER DIMENSIONS	65 ⅜" length x 31 ¼" width x 17 ⅜" height
HP REQUIRED (WITH DRY WHEAT)	Vanguard 40 HP EFI
CONVEYOR WIDTH (HUB FACE TO FACE)	83.25"
CONVEYOR WEIGHT	4100 lbs





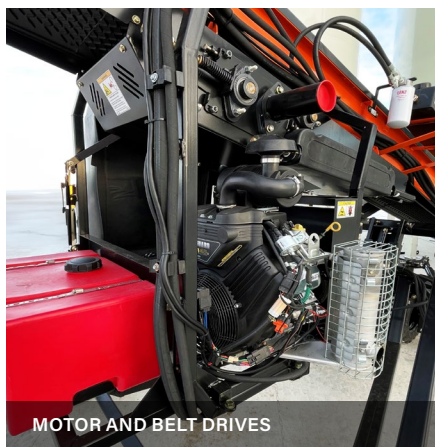
AWD MOVER KIT



AWD MOVER KIT



COMMAND CENTER



MOTOR AND BELT DRIVES



BELT SEAL AND TEXTURE

UCX <sup>3</sup>	HEIGHT LOWERED	HEIGHT HALFWAY	HEIGHT RAISED	REACH LOWERED	REACH HALFWAY	REACH RAISED	HEIGHT AT LIFT ARMS HALFWAY	HEIGHT AT WHEELS RAISED	REACH AT LIFT ARMS HALFWAY	REACH AT WHEELS RAISED
1549 FMD W/ HANGING GAS	9' 6" (2.9 m)	16' 2" (4.928 m)	20' 10.75" (6.369m)	24' 0.25" (7.322 m)	23' 8.25" (7.22 m)	23' 5.25" (7.169 m)	10' 1.5" (3.086 m)	11' 5.75" (3.499 m)	20' 0.25" (6.102 m)	22' 4.75" (6.826 m)

Heights measured from bottom of conveyor spout to ground.



# UCX<sup>4</sup>

## DIESEL-POWERED

10" U-TROUGH TUBE  
15" BELT  
UP TO 10,500 BPH  
49' LENGTH



### FEATURES

#### 24 HP Kohler turbocharged diesel engine

Delivers reliable power with better torque and fuel efficiency. Farmers get longer engine life and lower fuel costs, even in demanding conditions.

#### Direct drive gearbox

- Gearbox directly mounted to the drive roller means fewer parts, less downtime and all the power delivered where it counts.
- Triple groove drive belt built to last under pressure. More grip, less wear and fewer replacements.

#### Bell housing electric clutch

A heavy-duty, weather-protected clutch built into the bell housing. Safer, more durable and fully self-contained for peace of mind.

#### Direct mount hydraulic pump

No belts, no slippage. Just smooth, low-maintenance hydraulic performance that keeps your operation running strong.

#### 1500W block heater & 1000CCA battery

Equipped with a powerful engine block heater and a high-capacity battery for enhanced cold weather starting performance and reliable power delivery.

#### Overhauled engine mount

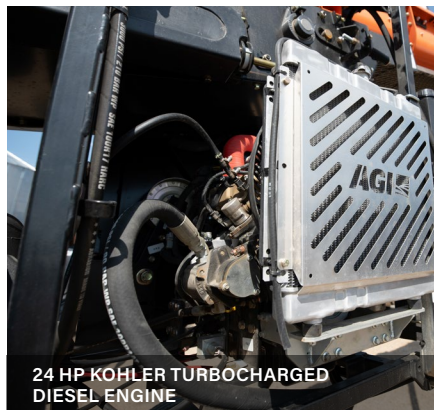
- New hydraulic tank and filter location optimized for cold weather and easier servicing.
- Keeps your hydraulics flowing smoothly when it matters most.
- EZ oil drain valve makes oil changes quick and clean. Less mess, less hassle and more uptime.

### UCX<sup>4</sup>

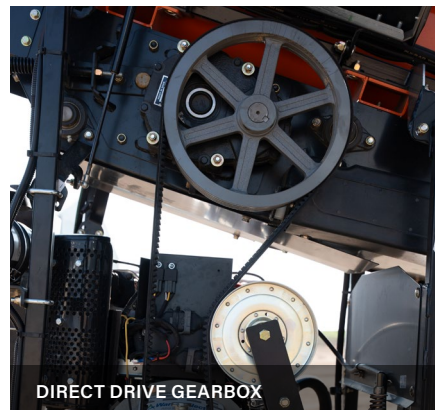
#### UCX<sup>4</sup> 1549 FMD DIESEL

CAPACITY	Up to 10,500 bph
TUBE GAUGE	12 ga laser cut U-trough
BELT TYPE	15" wide Direct-X
BELT LENGTH	110' 8"
LIFT	Hydraulic winch
FRAME TYPE	A-frame
AXLE	2 ½" sq. x .188"
HUB	6-bolt on 6.0", 4.62" pilot
TIRES	6-bolt ST205/75R15 6PL
PARKING JACK	7000 lbs rating, top twist 2 ½" receiver, 25" travel
HOPPER DIMENSIONS	65 ⅜" length x 31 ¼" width x 17 ⅝" height
HP REQUIRED (WITH DRY WHEAT)	Kohler 24 HP turbo diesel
CONVEYOR WIDTH (HUB FACE TO FACE)	83.75"
CONVEYOR WEIGHT	4300 lbs





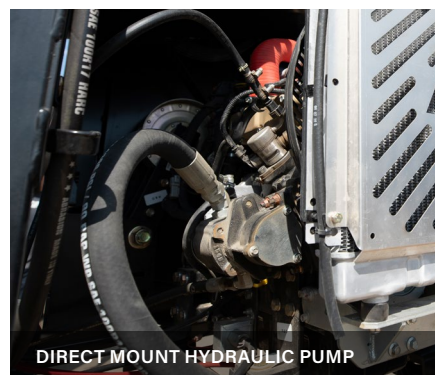
24 HP KOHLER TURBOCHARGED  
DIESEL ENGINE



DIRECT DRIVE GEARBOX



BELL HOUSING ELECTRIC CLUTCH



DIRECT MOUNT HYDRAULIC PUMP

## FEATURES (continued)

### Heads-up digital display & updated command center

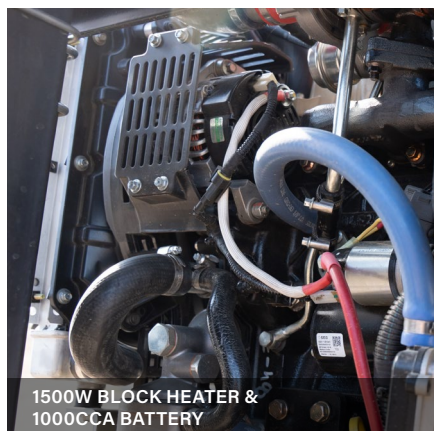
- Clear, modern interface puts key information front and center.
- Bolt-on design fits either side of the machine. Customizable for operator preference and comfort.

### Lower profile collapsible hopper & handle

More clearance under bins, easier setup and better maneuverability in tight spaces.

### Heavy-duty hopper cloth liner

Built tough for long days and heavy loads. Ready to move when you are.



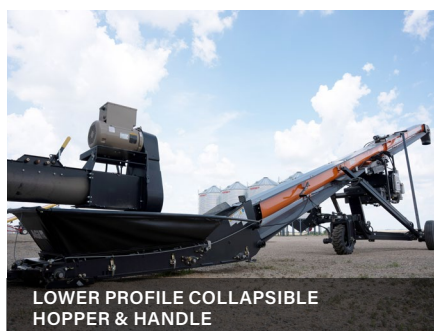
1500W BLOCK HEATER &  
1000CCA BATTERY



OVERHAULED ENGINE MOUNT



HEADS-UP DIGITAL DISPLAY &  
UPDATED COMMAND CENTER



LOWER PROFILE COLLAPSIBLE  
HOPPER & HANDLE



HEAVY-DUTY HOPPER CLOTH LINER



# BCX<sup>3</sup>

10" TUBE  
15" BELT  
UP TO 10,000 BPH  
49' LENGTH



## FEATURES

- All grain commodity system suitable for most seed types
- Easy to use spray and run wash system removes debris and residue on the back side of the belt from tough to wash commodities
- Two belt scrapers and one belt brush come standard helping to keep your belt clean
- Two-year limited warranty
- Ergonomic command center controls electric throttle, lights, start/stop, hydraulics and electric clutch with joystick steer for mover kit hydraulics
- Hopper with urethane seals, a stiffened hopper cloth, urethane flashing and a 32" parallel width for the full working length
- S-drive with pinch roller helps prevent over-tightening
- Sealed, straight down spout allows you to center trucks under the unit
- Straight down spout eliminates the need for additional down spout, so conveyor can stay at a lower working angle, increasing capacity
- Motor available in both top mount (TM) or under mount (UM)

## MOVER KIT FEATURES

- Adds an extra 15" of discharge height when compared to previous models
- All wheel drive
- 160° turning radius for tight yards

BCX <sup>3</sup>	
BCX <sup>3</sup> 1549 FMD	
CAPACITY	Up to 10000 bph
TUBE GAUGE	10" OD x 12 ga
BELT TYPE	15" wide chevron
BELT LENGTH	110' 8"
LIFT	Hydraulic winch
FRAME TYPE	A-frame
AXLE	2 ½" sq. x .125"
HUB	4-bolt on 5.0", 3.62" pilot
TIRES	4-bolt ST205/75D15
PARKING JACK	7000 lbs rating, top twist, 2 ½" receiver, 25" travel
HOPPER DIMENSIONS	64 ⅞" length x 30 ¾" width x 17 ¼" height
HP REQUIRED (WITH DRY WHEAT)	Vanguard 37 HP EFI
CONVEYOR WIDTH (HUB FACE TO FACE)	83.75"
CONVEYOR WEIGHT	3800 lbs





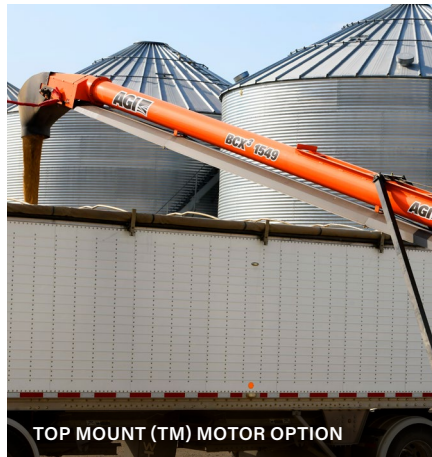
UNDER MOUNT (UM) MOTOR OPTION



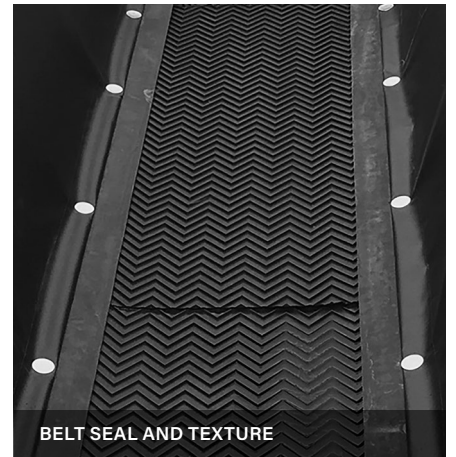
MOTOR AND BELT DRIVES



COMMAND CENTER



TOP MOUNT (TM) MOTOR OPTION



BELT SEAL AND TEXTURE

BCX³	HEIGHT LOWERED	HEIGHT HALFWAY	HEIGHT RAISED	REACH LOWERED	REACH HALFWAY	REACH RAISED	HEIGHT AT LIFT ARMS HALFWAY	HEIGHT AT WHEELS RAISED	REACH AT LIFT ARMS HALFWAY	REACH AT WHEELS RAISED
1549 FMD	9' 6" (2.899 m)	16' 1.750" (4.921 m)	20' 10.5" (6.363 m)	24' (7.315 m)	23' 8" (7.213 m)	23' 6.25" (7.169 m)	10' 1.5" (3.086 m)	11' 5.5" (3.493 m)	20' 0.25" (6.102 m)	22' 3.75" (6.801 m)

Heights measured from bottom of conveyor spout to ground.



# FX<sup>4</sup> SP

10" TUBE

15" BELT

UP TO 8,000 BPH

39' / 44' / 49' LENGTHS



## FEATURES

### No-nonsense discharge hood

- Grain flows straight down from the spout

### Pinch roller design

- Allows for easier assembly, better belt traction and improved efficiency

### Drive

- Comes gas over hydraulic with a 37 HP Vanguard engine

### Self-propelled mover kit

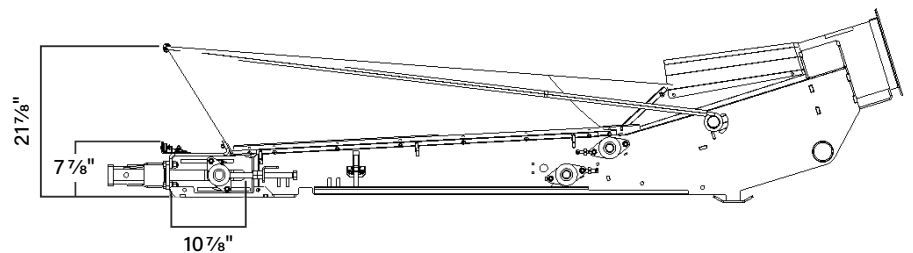
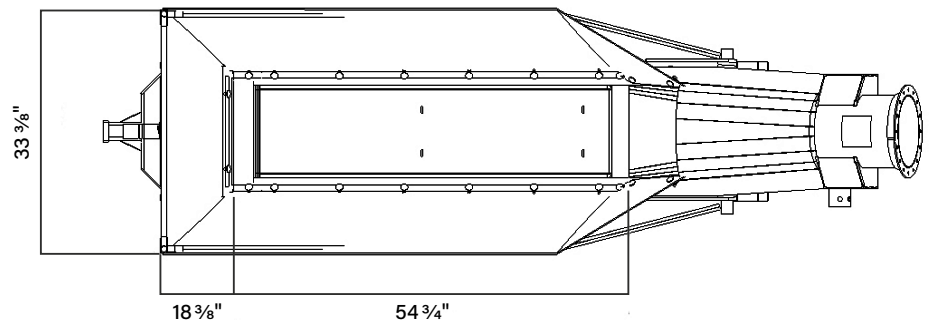
- Hydraulic steering and rugged all-terrain tires for easier bin access and tighter turning radius
- Makes moving around the yard easy with no lifting

### Hopper and under hopper skid plate

- Includes a pivoting skid plate which protects the bottom of the belt from debris damage, and makes it easier for one person clean-out

## FLTD - FIELD LOADER TOP DRIVE FEATURES

- Parallel hopper cloth stays 33 3/8" wide for the full working length
- Drive roller and pinch roller track together and are easier to access with a removable top plate







FX <sup>4</sup> SP			
	1539	1544	1549
CAPACITY	Up to 8000 bph		
TUBE GAUGE	10" x 14 ga		
BELT TYPE	15" wide chevron		
BELT LENGTH	84' 4"	94' 4"	104' 4"
LIFT	Hydraulic winch		
FRAME TYPE	A-frame		
AXLE	2 ½" sq. x ⅛"		
HUB	4-bolt on 5.0", 3.62" pilot		
TIRES	4-bolt ST205/75D15		
PARKING JACK	7000 lbs rating, top twist, 2 ½" receiver, 25" travel		
HOPPER DIMENSIONS	54 ¾" length x 33 ⅜" width x 21 ⅞" height		
HP REQUIRED (WITH DRY WHEAT)	37 hp		
CONVEYOR WIDTH (HUB FACE TO FACE)	7.5' (90")		

FX <sup>4</sup> SP	HEIGHT LOWERED	HEIGHT HALFWAY	HEIGHT RAISED	REACH LOWERED	REACH HALFWAY	REACH RAISED	HEIGHT AT LIFT ARMS HALFWAY	HEIGHT AT WHEELS RAISED	REACH AT LIFT ARMS HALFWAY	REACH AT WHEELS RAISED	HEIGHT AT 23° ANGLE TO BOTTOM OF SPOUT
1539	8' 10.75" (2.718 m)	15' 4.62" (4.705 m)	20' 4.5" (6.185 m)	18' 7.125" (5.645 m)	17' 9.75" (5.41 m)	17' 0.62" (5.15 m)	10' 2.37" (3.131 m)	11' 6.25" (3.512 m)	14' 9" (4.458 m)	16' 8.25" (5.067 m)	13' 2.3125" (4.02 m)
1544	10' 2" (3.099 m)	16' 3.25" (4.959 m)	20' 11.5" (6.388 m)	21' 0.25" (6.407 m)	20' 7" (6.274 m)	20' 1.75" (6.14 m)	10' 4.25" (3.156 m)	11' 6.25" (3.512 m)	17' 5" (5.309 m)	19' 7" (5.969 m)	15' 4.875" (4.70 m)
1549	12' (3.658 m)	17' 7" (5.359 m)	20' 10" (6.35 m)	21' 5.25" (6.534 m)	21' 1.75" (6.445 m)	21' 1" (6.426 m)	10' 4.75" (3.167 m)	11' 6" (3.505 m)	17' 10.75" (5.455 m)	20' 2.25" (6.153 m)	17' 4.125" (5.29 m)

Heights measured from bottom of conveyor spout to ground.



# FX<sup>4</sup>18S

12 3/4" TUBE

18" BELT

UP TO 10,500 BPH

39' / 44' LENGTHS



## FEATURES

### No-nonsense discharge hood

- Grain flows straight down from the spout

### 12 3/4" tube with an 18" belt

- 43% more capacity over 15S FX<sup>4</sup>

### Lower profile collapsible hopper & handle

- More clearance under bins, easier setup and better maneuverability in tight spaces

### New pinch drive roller

- For reliable belt traction in adverse conditions

### Larger drive roller

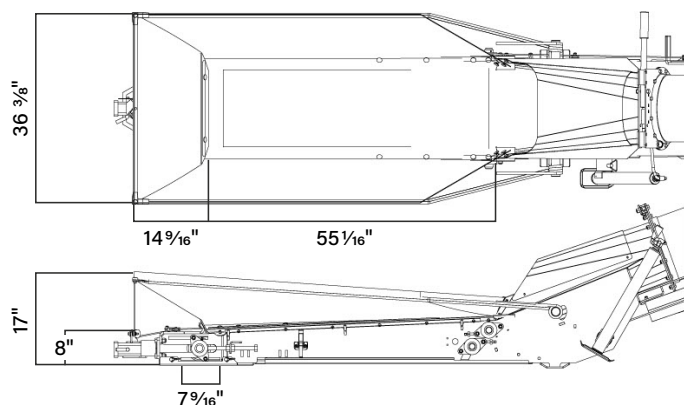
- To better handle higher capacities made possible with the 12 3/4" tube and 18" belt (5" OD, up from 4 1/4")

### New steel hopper option

- Simple, rigid, non-collapsing hopper option—no springs, no cables, no fuss

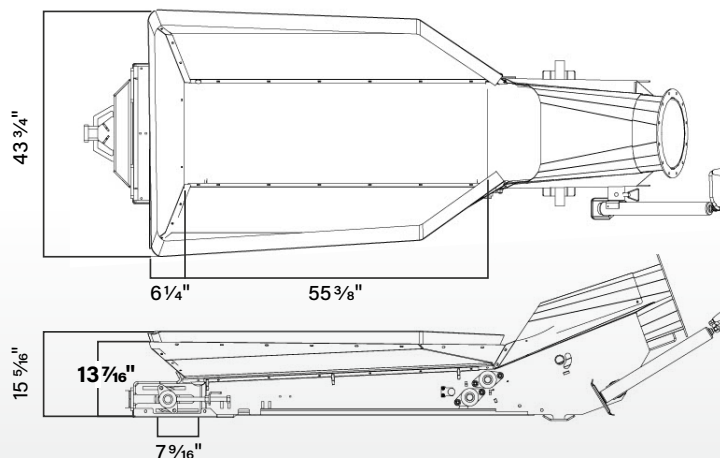
## COLLAPSIBLE HOPPER FEATURES

- Parallel hopper cloth stays 36 3/8" wide for the full working length
- Cloth frame updated for improved collapsibility and enhanced clearance



## STEEL HOPPER FEATURES

- 43 3/4" steel base for enhanced durability
- Rubber brim allows ample clearance beneath most bin unloads







FX <sup>4</sup> 18S		
	1839	1844
CAPACITY	Up to 10,500 bph	
TUBE GAUGE	12 ¾" x 12 ga	
BELT TYPE	18' wide chevron	
BELT LENGTH	83' 10"	93' 10"
LIFT	Hand winch	
FRAME TYPE	A-frame	
AXLE	2 ½" sq. x ⅛"	
HUB	4-bolt on 5.0", 3.62" pilot	
TIRES	4-bolt ST205/75D15	
PARKING JACK	1000 lbs rating, top twist, 2 ½" receiver, 15" travel	
HOPPER DIMENSIONS	54 ¾" length x 36 ¾" width x 21 ⅞" height	
HP REQUIRED (WITH DRY WHEAT)	Electric 12.5 hp/15 hp	Electric 15 hp
CONVEYOR WIDTH (HUB FACE TO FACE)	7.5' (90")	
CONVEYOR WEIGHT	1950 lbs	2070 lbs

FX <sup>4</sup> 18S	HEIGHT LOWERED	HEIGHT HALFWAY	HEIGHT RAISED	REACH LOWERED	REACH HALFWAY	REACH RAISED	HEIGHT AT LIFT ARMS HALFWAY	HEIGHT AT WHEELS RAISED	REACH AT LIFT ARMS HALFWAY	REACH AT WHEELS RAISED	HEIGHT AT 23° ANGLE TO BOTTOM OF SPOUT
1839 FLTD	8' 1.75" (2.48 m)	14' 1.25" (4.30 m)	18' 1" (5.51 m)	17' 10" (5.44 m)	17' 3" (5.25 m)	16' 10" (5.13 m)	8' 11.75" (2.73 m)	10' 4.25" (3.16 m)	15' 7.5" (4.76 m)	16' 10" (5.13 m)	13' 0.25" (3.96 m)
1844 FLTD	6' 6.18" (1.98 m)	13' 10" (4.21 m)	18' 1.62" (5.53 m)	21' 3.18" (6.48 m)	20' 8.75" (6.32 m)	20' 5.37" (6.23 m)	8' 6.43" (2.60 m)	9' 8.37" (2.96 m)	18' 4.5" (5.60 m)	20' 5.37" (6.23 m)	14' 11.87" (4.57 m)

Heights measured from bottom of conveyor spout to ground.



# FX<sup>4</sup>

10" TUBE  
15" BELT  
UP TO 7,000 BPH  
39' / 44' / 49' LENGTHS

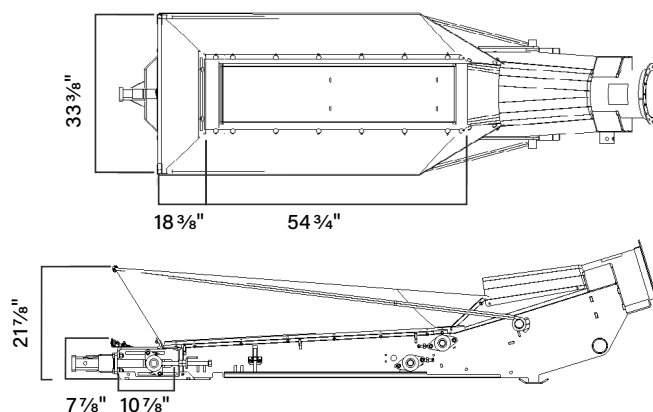


## FEATURES

- Grain flows straight down from the spout with the no-nonsense hood
- New pinch roller design allows for easier assembly, better belt traction and improved efficiency
- Available in electric, gas over hydraulic or hydraulic drives so you can move grain even when you don't have electricity
- Hopper lifting handle helps guide the conveyor into place
- Under hopper skid plate stops debris from touching the bottom of the belt, keeping it off the belt and protecting the belt from damage
  - **Ability to pivot skid plate makes it easier for one-person clean-out**
- Additional balance points to optimize hitch weight

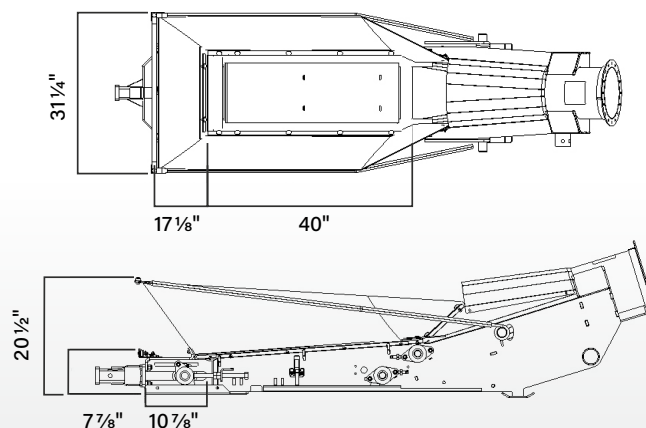
## FLTD - FIELD LOADER TOP DRIVE FEATURES

- Parallel hopper cloth stays 33 <sup>3</sup>/<sub>8</sub>" wide for the full working length
- Drive roller and pinch roller track together and are easier to access with a removable top plate



## SHORT - FIELD LOADER TOP DRIVE FEATURES

- Designed specifically to fit underneath even the lowest bin unloads
- Drive roller and pinch roller track together and are easier to access with a newly added removable top plate





FX <sup>4</sup>						
	1539 FLTD	1544 FLTD	1549 FLTD	1539 FLTD SHORT	1544 FLTD SHORT	1549 FLTD SHORT
CAPACITY	Up to 7000 bph					
TUBE GAUGE	10" x 14 ga					
BELT TYPE	15" wide chevron					
BELT LENGTH	84' 4"	94' 4"	104' 4"	81' 10"	91' 10"	101' 10"
LIFT	Hand or hydraulic winch					
FRAME TYPE	A-frame					
AXLE	2 ½" sq. x .125"					
HUB	4-bolt on 5.0", 3.62" pilot					
TIRES	4-bolt ST205/75D15					
PARKING JACK	1000 lbs rating, top twist, 2 ½" receiver, 15" travel					
HOPPER DIMENSIONS	54 ¾" length x 33 ⅜" width x 21 ⅞" height			40" length x 31 ¼" width x 20 ½" height		
HP REQUIRED (WITH DRY WHEAT)	Electric - 10	Electric - 10 / 12.5	Electric - 12.5 / 15	Electric - 10	Electric - 10 / 12.5	Electric - 12.5 / 15
CONVEYOR WIDTH (HUB FACE TO FACE)	7.5' (90")					
HITCH WEIGHT (WITH MOTOR INSTALLED)	80 lbs	90 lbs	90 lbs	80 lbs	80 lbs	90 lbs
CONVEYOR WEIGHT	1650 lbs	1700 lbs	1750 lbs	1575 lbs	1625 lbs	1675 lbs

FX <sup>4</sup>	HEIGHT LOWERED	HEIGHT HALFWAY	HEIGHT RAISED	REACH LOWERED	REACH HALFWAY	REACH RAISED	HEIGHT AT LIFT ARMS HALFWAY	HEIGHT AT WHEELS RAISED	REACH AT LIFT ARMS HALFWAY	REACH AT WHEELS RAISED	HEIGHT AT 23° ANGLE TO BOTTOM OF SPOUT
1539 FLTD	8' 10.75" (2.718 m)	15' 4.62" (4.705 m)	20' 4.5" (6.185 m)	18' 7.125" (5.645 m)	17' 9.75" (5.41 m)	17' 0.62" (5.15 m)	10' 2.37" (3.131 m)	11' 6.25" (3.512 m)	14' 9" (4.458 m)	16' 8.25" (5.067 m)	13' 2.3125" (4.02 m)
1544 FLTD	10' 2" (3.099 m)	16' 3.25" (4.959 m)	20' 11.5" (6.388 m)	21' 0.25" (6.407 m)	20' 7" (6.274 m)	20' 1.75" (6.14 m)	10' 4.25" (3.156 m)	11' 6.25" (3.512 m)	17' 5" (5.309 m)	19' 7" (5.969 m)	15' 4.875" (4.70 m)
1549 FLTD	12' (3.658 m)	17' 7" (5.359 m)	20' 10" (6.35 m)	21' 5.25" (6.534 m)	21' 1.75" (6.445 m)	21' 1" (6.426 m)	10' 4.75" (3.167 m)	11' 6" (3.505 m)	17' 10.75" (5.455 m)	20' 2.25" (6.153 m)	17' 4.125" (5.29 m)
1539 FLTD SHORT	8' 10.75" (2.718 m)	15' 4.62" (4.705 m)	20' 4.5" (6.185 m)	18' 7.125" (5.645 m)	17' 9.75" (5.41 m)	17' 0.62" (5.15 m)	10' 2.37" (3.131 m)	11' 6.25" (3.512 m)	14' 9" (4.458 m)	16' 8.25" (5.067 m)	13' 2.3125" (4.02 m)
1544 FLTD SHORT	10' 2" (3.099 m)	16' 3.25" (4.959 m)	20' 11.5" (6.388 m)	21' 0.25" (6.407 m)	20' 7" (6.274 m)	20' 1.75" (6.14 m)	10' 4.25" (3.156 m)	11' 6.25" (3.512 m)	17' 5" (5.309 m)	19' 7" (5.969 m)	15' 4.875" (4.70 m)
1549 FLTD SHORT	12' (3.658 m)	17' 7" (5.359 m)	20' 10" (6.35 m)	21' 5.25" (6.534 m)	21' 1.75" (6.445 m)	21' 1" (6.426 m)	10' 4.75" (3.167 m)	11' 6" (3.505 m)	17' 10.75" (5.455 m)	20' 2.25" (6.153 m)	17' 4.125" (5.29 m)

Heights measured from bottom of conveyor spout to ground.



# TCX

8" TUBE  
12" BELT  
UP TO 3,800 BPH  
22' / 27' / 32' LENGTHS



## FEATURES

- 2-Ply chevron belt with poly slider backing
- 205-75-14 tires
- Collapsible intake hopper
- Manual lift winch
- Standard with weather guards
- Poly return rollers
- Powder coat paint

## TCX

	1222 TD	1227 TD	1232 TD
CAPACITY	Up to 3800 bph		
TUBE GAUGE	8" OD x 14 ga		
BELT TYPE	12" wide chevron		
BELT LENGTH	46' 5"	56' 2"	66' 3"
LIFT	Hand winch		
FRAME TYPE	A-frame		
AXLE	2" sq. x .188"		
HUB	5-bolt on 4.5", 3.31" pilot		
TIRES	205/75-14		
PTO SHAFT	N/A		
PARKING JACK	1000 lbs load rating, top twist, 2 1/2" receiver, 15" travel		
HOPPER DIMENSIONS	33 3/4" length x 19 3/8" width on narrow end, 34 1/2" width on wide end x 30 1/2" height		
HP REQUIRED (WITH DRY WHEAT)	Electric - 5		
CONVEYOR WIDTH (HUB FACE TO FACE)	84.375"		
CONVEYOR WEIGHT	1000 lbs	1030 lbs	1150 lbs

TCX	HEIGHT LOWERED	HEIGHT HALFWAY	HEIGHT RAISED	REACH LOWERED	REACH HALFWAY	REACH RAISED	HEIGHT AT LIFT ARMS HALFWAY	HEIGHT AT WHEELS RAISED	REACH AT LIFT ARMS HALFWAY	REACH AT WHEELS RAISED
1222 TD	8' 2.25" (2.495 m)	9' 6.75" (2.915 m)	10' 8.75" (3.27 m)	7' 7.75" (2.33 m)	7' 4" (2.235 m)	7' 0.25" (2.14 m)	7' 2" (2.184 m)	7' 5" (2.26 m)	7' 1.75" (2.178 m)	7' 0.25" (2.14 m)
1227 TD	9' 1" (2.769 m)	13' 1" (3.989 m)	15' 11.25" (4.858 m)	9' 2.75" (2.813 m)	8' 6.25" (2.597 m)	7' 8.75" (2.356 m)	9' 1" (2.769 m)	8' 11" (2.718 m)	9' 1.75" (2.788 m)	11' 4" (3.454 m)
1232 TD	10' 3.5" (3.137 m)	13' 9.75" (4.21 m)	16' 10.25" (5.137 m)	9' 8.5" (2.959 m)	9' 9.25" (2.978 m)	9' 9.75" (2.99 m)	10' 4" (3.15 m)	10' 7" (3.226 m)	9' 4.5" (2.858 m)	9' 10" (3 m)

Heights measured from bottom of conveyor spout to ground.



# A-FRAMES AND LONG CONVEYORS

## 1500 SERIES

10" TUBE // 15" BELT  
UP TO 6,000 BPH  
35' - 100' LENGTHS

## 2000 SERIES

14" TUBE // 20" BELT  
UP TO 9,000 BPH  
45' - 120' LENGTHS

## 2400 SERIES

14" TUBE // 23.5" BELT  
UP TO 14,000 BPH  
65' - 120' LENGTHS

### FEATURES

- Electric, hydraulic, PTO or gas drive options
- Gentle handling
- Low maintenance and long-lasting belt
- High capacity
- Low horsepower required
- A-frame undercarriage on 35'-55' lengths
- Hydraulic scissor lift on 65'-120' lengths
- Cable trussing on 55'-100' lengths
- Steel tube trussing on 105'-120' lengths
- Extendable axles on 85'-120' lengths
- Collapsible canvas hopper
- Optional self-propelled drive





1500 SERIES									
	1535 TD A-FRAME	1540 TD A-FRAME	1545 TD A-FRAME	1555 SD A-FRAME	1565 SD HYD	1575 SD HYD	1585 SD HYD	1590 SD HYD	15100 SD HYD
CAPACITY	Up to 6000 bph								
TUBE GAUGE	10" OD x 14 ga			10" OD x 12 ga					
BELT TYPE	15" wide chevron								
BELT LENGTH	70' 2"	80' 2"	90' 2"	115' 6"	135' 3"	155'	175'	185'	205'
TUBE TRUSSING	N/A			¾" steel aircraft cable					
LIFT	Hand winch				One 4" x 30 hydraulic cylinder		One 4" x 36 hydraulic cylinder		One 4" x 48 hydraulic cylinder
FRAME TYPE	A-frame				Hydraulic scissor lift				
AXLE	2 ½" sq. x .125"			2 ½" sq. x .188"	3" sq. x .188"		3" sq. x .375"		
HUB	4-bolt on 5.0", 3.62" pilot				6-bolt on 6.0", 4.62" pilot				
TIRES	4-bolt ST205/75D15				6-bolt ST205/ 75R15 6PL				
PTO SHAFT	N/A			Side PTO 35E 1 ½" x 75"; 540 rpm					
PARKING JACK	N/A			7000 lbs load rating, top twist, 2 ½" receiver, 25" travel					
HOPPER DIMENSIONS	37 ⅞" length x 27 ⅝" width at narrow end, 47 ¾" width at wide end x 29 ⅝" height								
HP REQUIRED (WITH DRY WHEAT)	Electric - 7.5	Electric - 7.5	Electric - 10.0	PTO - 30 Electric - 10 Gas - 27	PTO - 30 Electric - 15 Gas - 27	PTO - 40 Electric - 20 Gas - 27	PTO - 40 Electric - 20 Gas - 35	PTO - 50 Electric - 25 Gas - 35	PTO - 50 Electric - 25 Gas - 35
CONVEYOR WIDTH (HUB FACE TO FACE)	83.125"			101.5"	126.375"	126.375"	132.5"	132.5"	132.5"
AXLE EXTENSION LENGTH	N/A						38"	38"	38"
CONVEYOR WEIGHT	1580 lbs	1680 lbs	1780 lbs	2360 lbs	3000 lbs	3260 lbs	3740 lbs	3850 lbs	4450 lbs

	HEIGHT LOWERED	HEIGHT HALFWAY	HEIGHT RAISED	REACH LOWERED	REACH HALFWAY	REACH RAISED	HEIGHT AT LIFT ARMS HALFWAY	HEIGHT AT WHEELS RAISED	REACH AT LIFT ARMS HALFWAY	REACH AT WHEELS RAISED
1535 TD A-FRAME	8' 3" (2.515 m)	15' 4.25" (4.68 m)	17' 5.25" (5.315 m)	13' 6.5" (4.128 m)	15' 4.25" (4.68 m)	13' 0.25" (3.969 m)	10' 1" (3.073 m)	11' 2.75" (3.423 m)	10' 9.75" (3.296 m)	13' 0.75" (3.981 m)
1540 TD A-FRAME	9' 9.25" (2.978 m)	14' 5" (4.394 m)	17' 9.5" (5.423 m)	14' 8.5" (4.483 m)	14' 3" (4.343 m)	15.2' (4.623 m)	10' 8.5" (3.264 m)	11' 6" (3.505 m)	12' 3.75" (3.753 m)	14' 3" (4.343 m)
1545 TD A-FRAME	11' 5.25" (3.493 m)	16' (4.877 m)	19' 1" (5.817 m)	17' 3" (5.258 m)	16' 7.5" (5.067 m)	15' 11" (4.851 m)	11' 3.5" (3.442 m)	12' (3.658 m)	15' 1.5" (4.61 m)	16' (4.877 m)
1555 TD A-FRAME	11' 0.25" (3.359 m)	20' 11" (6.375 m)	28' 0.5" (8.547 m)	24' 2" (7.366 m)	23' 3.5" (7.099 m)	22' 2.5" (6.769 m)	14' 5.75" (4.413 m)	16' 2" (4.928 m)	18' 4" (5.588 m)	22' 1.25" (6.737 m)
1565 SD HYD	9' 5.25" (2.876 m)	22' 9" (6.934 m)	33' 11" (10.338 m)	26' 8" (8.128 m)	25' 3.25" (7.703 m)	22' 10.75" (6.972 m)	14' 11" (4.547 m)	21' 7" (6.58 m)	25' 1.75" (7.664 m)	22' 10.75" (6.979 m)
1575 SD HYD	10' 10.5" (3.315 m)	25' (7.62 m)	39' (11.887 m)	35' 9.5" (10.909 m)	27' (8.23 m)	30' 8" (9.347 m)	14' 4.25" (4.375 m)	22' 3" (6.782 m)	33' 4" (10.16 m)	28' 1" (8.56 m)
1585 SD HYD	12' 4" (3.759 m)	28' 11.75" (8.833 m)	43' 6" (13.259 m)	41' 8" (12.7 m)	39' 9.75" (12.135 m)	35' (10.668 m)	15' 3.25" (4.655 m)	23' 4.5" (7.125 m)	39' 9.75" (12.135 m)	35' (10.668 m)
1590 SD HYD	14.9' (4.496 m)	30' 8.5" (9.36 m)	44.2' (13.462 m)	46.7' (14.199 m)	44' 5.75" (13.557 m)	39.5 (11.989 m)	15' 1.75" (4.616 m)	22' 6" (6.909 m)	44' 5.75" (13.557 m)	40' (12.192 m)
15100 SD HYD	11' 4" (3.454 m)	32' 11.5" (10.046 m)	50' 3" (15.316 m)	48' 4" (14.732 m)	45' 7.5" (13.735 m)	39' 3" (11.963 m)	17' 11.5" (5.474 m)	28' 4" (8.636 m)	45' 7.5" (13.907 m)	40' (12.192 m)

Heights measured from bottom of conveyor spout to ground.



2000 SERIES									
	2045 A-FRAME	2055 A-FRAME	2065 HYD	2075 HYD	2085 HYD	2095 HYD	20105 HYD	20110 HYD	20120 HYD
CAPACITY	Up to 9000 bph								
TUBE GAUGE	14"OD x 12 ga								
BELT TYPE	20" wide chevron ultimate								
BELT LENGTH	97' 10"	117' 10"	137' 10"	157' 10"	177' 10"	197' 10"	217' 10"	227' 10"	247' 10"
TUBE TRUSSING	N/A	¾" aircraft steel cable					3.5" x .120W round tubing		
LIFT	Hand winch		Two 4" x 30" hydraulic cylinders		Two 4" x 36" hydraulic cylinders		Three 4 ½" x 40" hydraulic cylinders		
FRAME TYPE	A-frame		Hydraulic scissor lift						
AXLE	3 ½" sq. x .188"								
HUB	6-bolt on 6", 4.62" pilot						6-bolt on 6", 4.62" pilot		
TIRES	ST205 75R 15 6PL		ST235 / 80R16, load range "E", max speed 120 km/h, max psi 80				ASM-6-bolt 12.5LX16 LRG		
PTO SHAFT	Side drive 35E 1 ½"x 75", 540 PTO Front drive 35E CV 540 PTO								
PARKING JACK	15000 lbs load rating, side twist, 2 ½" receiver, 24" travel								
HOPPER DIMENSIONS	37 ⅞" length x 37" width at narrow end, 48 1⅝" width at wide end x 23 ½" height								
HP REQUIRED (WITH DRY WHEAT)	Electric - 15	PTO - 50 Electric - 20	PTO - 60 Electric - 25	PTO - 60 Electric-30	PTO - 70 Electric - 30	PTO - 80 Electric - 40	PTO - 80 Electric - 40	PTO - 100 Electric - 50	PTO - 100 Electric - 50
CONVEYOR WIDTH (HUB FACE TO FACE)	86.375"	116.25"	132.5"				150"		
AXLE EXTENSION LENGTH	N/A		38"				32.5"		
CONVEYOR WEIGHT	3100 lbs	3650 lbs	4830 lbs	5130 lbs	5870 lbs	6130 lbs	7990 lbs	9160 lbs	9430 lbs

	HEIGHT LOWERED	HEIGHT HALFWAY	HEIGHT RAISED	REACH LOWERED	REACH HALFWAY	REACH RAISED	HEIGHT AT LIFT ARMS HALFWAY	HEIGHT AT WHEELS RAISED	REACH AT LIFT ARMS HALFWAY	REACH AT WHEELS RAISED
2045 A-FRAME	11' 7.5" (3.543 m)	17' 3.75" (5.277 m)	22' 1.5" (6.743 m)	22' 7.75" (6.896 m)	22' 2.25" (6.763 m)	21' 7.75" (6.598 m)	10' 9" (3.277 m)	11' 8.25" (3.562 m)	19' 9.75" (6.039 m)	21' 7.75" (6.598 m)
2055 A-FRAME	10' 11" (3.327 m)	19' 11.5" (6.083 m)	27' 2.25" (8.287 m)	24' 6.75" (7.487 m)	24' 8.5" (7.531 m)	25' 1" (7.645 m)	14' 7" (4.445 m)	16' 3" (4.953 m)	18' 7" (5.664 m)	22' 7" (6.883 m)
2065 HYD	8' 2.25" (2.496 m)	19' 5" (5.766 m)	31' 5.75" (9.595 m)	25' 9.75" (7.868 m)	25' (7.62 m)	22.3' (6.782 m)	13' 7.25" (4.147 m)	20' 10" (6.35 m)	25' (7.62 m)	23' 0.75" (7.029 m)
2075 HYD	10' 5" (3.175 m)	23' 4" (7.112 m)	37' 1" (11.303 m)	35' 9" (10.897 m)	34' 5" (10.49 m)	31' 6" (9.601 m)	13' 4" (4.064 m)	20' 7" (6.274 m)	34' 5" (10.49 m)	34' 5" (10.49 m)
2085 HYD	10' 1.5" (3.086 m)	21' 9.5" (6.642 m)	42' 9" (13.03 m)	38' 5" (11.709 m)	37' 2" (11.328 m)	32' 1" (9.779 m)	13' 2" (4.013 m)	25' 10" (7.874 m)	37' 2" (11.328 m)	32' 1" (9.779 m)
2095 HYD	11' 6.75" (3.524 m)	24' 7" (7.493 m)	47' 11" (14.605 m)	48' 4" (14.732 m)	46' 9.5" (14.262 m)	40' 7" (12.37 m)	13' 9.75" (4.21 m)	26' 5.75" (8.071 m)	46' 9.5" (14.262 m)	40' 7" (12.37 m)
20105 HYD	10' 3.75" (3.143 m)	35' 1" (10.693 m)	54' 7.25" (16.65 m)	46' 0.25" (14.027 m)	43 7.5" (13.297 m)	39' 8.5" (12.103 m)	21' (6.401 m)	33' 4.75" (10.179 m)	42' 10" (13.056 m)	37' 3.75" (11.373 m)
20110 HYD	10' 10.75" (3.321 m)	36' 7.25" (11.157 m)	57' 5.5" (17.513 m)	52' (15.85 m)	49' 6.5" (15.1 m)	44' 11.75" (13.71 m)	20' 11.75" (6.395 m)	33' 4.75" (10.179 m)	48' 8.5" (14.846 m)	42' 7" (12.979 m)
20120 HYD	12' 1.25" (3.689 m)	40' 1" (12.217 m)	62' 9.5" (19.139 m)	61' 11.25" (18.878 m)	58' 11" (17.958 m)	53' 5.5" (16.294 m)	20' 11.75" (6.394 m)	33' 4.75" (10.179 m)	58' 1" (17.704 m)	51' 0.75" (15.564 m)

Heights measured from bottom of conveyor spout to ground.



2400 SERIES							
	2465 HYD	2475 HYD	2485 HYD	2495 HYD	24105 HYD	24110 HYD	24120 HYD
CAPACITY	Up to 14000 bph						
TUBE GAUGE	14"OD x 12 ga						
BELT TYPE	23.5" wide chevron ultimate						
BELT LENGTH	140' 6"	160' 6"	180' 6"	200' 6"	220' 6"	230' 6"	250' 6"
TUBE TRUSSING	½" aircraft steel cable				3.5" x .120W round tubing		
LIFT	Two 4" x 30" hydraulic cylinders		Two 4" x 30" hydraulic cylinders		Three 4 ½" x 40" hydraulic cylinders		
FRAME TYPE	Hydraulic scissor lift						
AXLE	3 ½" sq. x .188"						
HUB	6-bolt on 6", 4.62" pilot				6-bolt on 6", 4.62" pilot		
TIRES	ST235 / 80R16, load range "E"				6-bolt 12.5LX16 LRG		
PTO SHAFT	Side PTO option 35E 1 ½" x 75" PTO 1 ⅝" 6 spline output; Front PTO option 35E CAT 4 50 DEG. E CV drive shaft 1 ⅝" 6 spline output						
PARKING JACK	15000 lbs load rating, side twist, 2 ½" receiver, 24" travel						
HOPPER DIMENSIONS	51 ¾" length x 37 ¾" width at narrow end, 50 ¼" width at wide end x 38 ⅞" height						
HP REQUIRED (WITH DRY WHEAT)	PTO - 60 Electric - 25	PTO - 70 Electric - 30	PTO - 80 Electric - 30	PTO - 80 Electric - 40	PTO - 90 Electric - 40	PTO - 100 Electric - 50	PTO - 120 Electric - 50
CONVEYOR WIDTH (HUB FACE TO FACE)	132.5"				150"		
AXLE EXTENSION LENGTH	38"				32.5"		
CONVEYOR WEIGHT	5080 lbs	5400 lbs	6150 lbs	6630 lbs	8310 lbs	9500 lbs	9770 lbs

	HEIGHT LOWERED	HEIGHT HALFWAY	HEIGHT RAISED	REACH LOWERED	REACH HALFWAY	REACH RAISED	HEIGHT AT LIFT ARMS HALFWAY	HEIGHT AT WHEELS RAISED	REACH AT LIFT ARMS HALFWAY	REACH AT WHEELS RAISED
2465	8' 4.25" (2.546 m)	19' 7.25" (5.975 m)	31' 8" (9.652 m)	26' 6.75" (8.096 m)	25' 8.75" (7.842 m)	24' 0.5" (7.328 m)	13' 1.5" (4.102 m)	21' 5.75" (6.547 m)	25' 8.75" (7.842 m)	22' 2.5" (6.769 m)
2475	14' 3" (4.343 m)	22' 9.75" (6.953 m)	36' 3" (11.049 m)	35' 9.5" (10.9093 m)	34' 1.5" (10.401 m)	31' 7.25" (9.632 m)	12' 7.5" (3.848 m)	21' 5.5" (6.541 m)	34' 1.5" (10.401 m)	29' 9.25" (9.074 m)
2485	13' 9" (4.176 m)	22' (6.706 m)	42' 4" (12.893 m)	38' 8" (11.765 m)	38' 0.5" (11.595 m)	32' 7" (9.936 m)	13' 4" (4.064 m)	25' 6" (7.772 m)	38' 0.5" (11.595 m)	33' 4" (10.16 m)
2495	11' 3" (3.429 m)	24' 3" (7.391 m)	47' 7" (14.503 m)	49' 1" (14.961 m)	47' 9" (14.554 m)	41' 11.75" (12.795 m)	13' 0.5" (3.975 m)	25' 6" (7.772 m)	47' 9" (14.554 m)	41' 11.75" (12.795 m)
24105	10' 3.5" (3.137 m)	34' 9.75" (10.611 m)	54' 8.75" (16.681 m)	47' 8.5" (14.542 m)	45' 7.75" (13.907 m)	41' 9.5" (12.891 m)	20' 9.5" (6.337 m)	33' 1.5" (10.097 m)	44' 8.75" (13.633 m)	39' 1.75" (11.932 m)
24110	10' 10.5" (3.315 m)	36' 6.5" (11.138 m)	57' 4" (17.475 m)	52' 7.75" (16.046 m)	50' 4" (15.342 m)	46' (14.021 m)	20' 9.5" (6.337 m)	33' 1.75" (10.103 m)	49' 5" (15.062 m)	43' 4.75" (13.227 m)
24120	12' 1" (3.683 m)	40' (12.192 m)	62' 7" (19.075 m)	62' 7" (19.075 m)	59' 8.5" (18.199 m)	54' 6" (16.612 m)	20' 9.5" (6.337 m)	33' 1.5" (10.1 m)	58' 9" (17.907 m)	51' 10" (15.799 m)

Heights measured from bottom of conveyor spout to ground.



1500 SWINGAWAY						
	1565 SA		1575 SA	1585 SA	1590 SA	15100 SA
CAPACITY	Up to 6000 bph					
TUBE GAUGE	10" OD x 12 ga					
BELT TYPE	15" wide chevron					
BELT LENGTH	135' 3"	155'	175'	185'	205'	
TUBE TRUSSING	3/8" steel aircraft cable					
LIFT	One 4" x 30 cylinder			One 4" x 36 cylinder		One 4" x 48 cylinder
FRAME TYPE	Hydraulic scissor lift					
AXLE	3" sq. x .188"			3" sq. x .375"		
HUB	6-bolt on 6.0" B.C.D., 4.62" pilot					
TIRES	6-bolt ST205/ 75R15 6PL					
DRIVE OPTIONS	Side or Front PTO					
PARKING JACK	7000 lbs load rating, top twist, 2 1/2" receiver, 25 " travel					
HOPPER DIMENSIONS	N/A, enclosed with swingaway					
HP REQUIRED (WITH DRY WHEAT)	PTO - 30	PTO - 40	PTO - 40	PTO - 50	PTO - 50	
CONVEYOR WIDTH (HUB FACE TO FACE)	126.375"	126.375"	132.5"	132.5"	132.5"	
AXLE EXTENSION LENGTH	N/A		38"	38"	38"	
CONVEYOR WEIGHT	3000 lbs	3260 lbs	3740 lbs	3850 lbs	4450 lbs	
SWINGAWAY WEIGHT	1200 lbs					

	HEIGHT LOWERED	HEIGHT HALFWAY	HEIGHT RAISED	REACH LOWERED	REACH HALFWAY	REACH RAISED	HEIGHT AT LIFT ARMS HALFWAY	HEIGHT AT WHEELS RAISED	REACH AT LIFT ARMS HALFWAY	REACH AT WHEELS RAISED
1565 SA	9' 5.25" (2.876 m)	22' 9" (6.934 m)	33' 11" (10.338 m)	26' - 8" (8.128 m)	25' 3.25" (7.703 m)	22' 10.75" (6.972 m)	14' 11" (4.547 m)	21' 7" (6.58 m)	25' 1.75" (7.664 m)	22' 10.75" (6.979 m)
1575 SA	10' 10.5" (3.315 m)	25' (7.62 m)	39' 0" (11.887 m)	35' 9.5" (10.909 m)	27' (8.23 m)	30' 8" (9.347 m)	14' 4.25" (4.375 m)	22' 3" (6.782 m)	33' 4" (10.16 m)	28' 1" (8.56 m)
1585 SA	12' 4" (3.759 m)	28' 11.75" (8.833 m)	43' 6" (13.259 m)	41' 8" (12.7 m)	39' 9.75" (12.135 m)	35' 0" (10.668 m)	15' 3.25" (4.655 m)	23' 4.5" (7.125 m)	39' 9.75" (12.135 m)	35' (10.668 m)
1590 SA	14.9' (4.496 m)	30' 8.5" (9.36 m)	44.2' (13.462 m)	46.7' (14.199 m)	44' 5.75" (13.557 m)	39.5 (11.989 m)	15' 1.75" (4.616 m)	22' 6" (6.909 m)	44' 5.75" (13.557 m)	40' (12.192 m)
15100 SA	11' 4" (3.454 m)	32' 11.5" (10.046 m)	50' 3" (15.316 m)	48' 4" (14.732 m)	45' 7.5" (13.735 m)	39' 3" (11.963 m)	17' 11.5" (5.474 m)	28' 4" (8.636 m)	45' 7.5" (13.907 m)	40' (12.192 m)

Heights measured from bottom of conveyor spout to ground.



2000 SWINGAWAY								
	2065 SA	2075 SA	2085 SA	2095 SA	20105 SA	20110 SA	20120 SA	
CAPACITY	Up to 9000 bph							
TUBE GAUGE	14"OD x 12 ga							
BELT TYPE	20" wide chevron ultimate							
BELT LENGTH	137' 10"	157' 10"	177' 10"	197' 10"	217' 10"	227' 10"	247' 10"	
TUBE TRUSSING	3/8" aircraft steel cable				Rigid 3.5" x .120W round tubing			
LIFT	Two 4" x 30" cylinders		Two 4" x 36" cylinders		Three 4 1/2" x 40" cylinders			
FRAME TYPE	Hydraulic scissor lift							
AXLE	3 1/2" sq. x .188"							
HUB	6-bolt on 6" B.C.D., 4.62" pilot				6-bolt on 6" B.C.D., 4.62" pilot			
TIRES	ST235 / 80R16, load range "E"				6-bolt 12.5L x 16 LRG			
PTO SHAFT	Side PTO option 35E 1 1/2" x 75", PTO 1 3/8" 6 spline output: Front PTO option 35E CAT 4 50 DEG. E CV drive shaft 1 3/8" 6 spline output							
PARKING JACK	15000 lbs load rating, side twist, 2 1/2" receiver, 24" travel							
HOPPER DIMENSIONS	N/A, enclosed with swingaway							
HP REQUIRED (WITH DRY WHEAT)	PTO - 60	PTO - 60	PTO - 70	PTO - 80	PTO - 80	PTO - 100	PTO - 100	
CONVEYOR WIDTH (HUB FACE TO FACE)	132.5"				150"			
AXLE EXTENSION LENGTH	38"				32.5"			
CONVEYOR WEIGHT	4830 lbs	5130 lbs	5870 lbs	6130 lbs	7990 lbs	9160 lbs	9430 lbs	
SWINGAWAY WEIGHT	1240 lbs							

	HEIGHT LOWERED	HEIGHT HALFWAY	HEIGHT RAISED	REACH LOWERED	REACH HALFWAY	REACH RAISED	HEIGHT AT LIFT ARMS HALFWAY	HEIGHT AT WHEELS RAISED	REACH AT LIFT ARMS HALFWAY	REACH AT WHEELS RAISED
2065 SA	8' 2.25" (2.496 m)	19' 5" (5.766 m)	31' 5.75" (9.595 m)	25' 9.75" (7.868 m)	25' (7.62 m)	22.3' (6.782 m)	13' 7.25" (4.147 m)	20' 10" (6.35 m)	25' (7.62 m)	23' 0.75" (7.029 m)
2075 SA	10' 5" (3.175 m)	23' 4" (7.112 m)	37' 1" (11.303 m)	35' 9" (10.897 m)	34' 5" (10.49 m)	31' 6" (9.601 m)	13' 4" (4.064 m)	20' 7" (6.274 m)	34' 5" (10.49 m)	34' 5" (10.49 m)
2085 SA	10' 1.5" (3.086 m)	21' 9.5" (6.642 m)	42' 9" (13.03 m)	38' 5" (11.709 m)	37' 2" (11.328 m)	32' 1" (9.779 m)	13' 2" (4.013 m)	25' 10" (7.874 m)	37' 2" (11.328 m)	32' 1" (9.779 m)
2095 SA	11' 6.75" (3.524 m)	24' 7" (7.493 m)	47' 11" (14.605 m)	48' 4" (14.732 m)	46' 9.5" (14.262 m)	40' 7" (12.37 m)	13' 9.75" (4.21 m)	26' 5.75" (8.071 m)	46' 9.5" (14.262 m)	40' 7" (12.37 m)
20105 SA	10' 3.75" (3.143 m)	35' 1" (10.693 m)	54' 7.25" (16.65 m)	46' 0.25" (14.027 m)	43' 7.5" (13.297 m)	39' 8.5" (12.103 m)	21' (6.401 m)	33' 4.75" (10.179 m)	42' 10" (13.056 m)	37' 3.75" (11.373 m)
20110 SA	10' 10.75" (3.321 m)	36' 7.25" (11.157 m)	57' 5.5" (17.513 m)	52' (15.85 m)	49' 6.5" (15.1 m)	44' 11.75" (13.71 m)	20' 11.75" (6.395 m)	33' 4.75" (10.179 m)	48' 8.5" (14.846 m)	42' 7" (12.979 m)
20120 SA	12' 1.25" (3.689 m)	40' 1" (12.217 m)	62' 9.5" (19.139 m)	61' 11.25" (18.878 m)	58' 11" (17.958 m)	53' 5.5" (16.294 m)	20' 11.75" (6.394 m)	33' 4.75" (10.179 m)	58' 1" (17.704 m)	51' 0.75" (15.564 m)

Heights measured from bottom of conveyor spout to ground.



2400 SWINGAWAY							
	2465 SA	2475 SA	2485 SA	2495 SA	24105 SA	24110 SA	24120 SA
CAPACITY	Up to 14000 bph						
TUBE GAUGE	14"OD x 12 ga						
BELT TYPE	23.5" chevron ultimate						
BELT LENGTH	140' 6"	160' 6"	180' 6"	200' 6"	220' 6"	230' 6"	250' 6"
TUBE TRUSSING	½" aircraft steel cable				Rigid 3.5" x .120W round tubing		
LIFT	Two 4" x 30" cylinders		Two 4" x 36" cylinders		Three 4 ½" x 40" cylinders		
FRAME TYPE	Hydraulic scissor lift						
AXLE	3 ½" sq. x .188"						
HUB	6-bolt on 6", 4.62" pilot				6-bolt on 6", 4.62" pilot		
TIRES	ST235 / 80R16, load range "E"				ASM-6BLT 12.5LX16 LRG		
PTO SHAFT	Side PTO option 35E 1 ½" x 75", PTO 1 ⅝" 6 spline output: Front PTO option 35E CAT 4 50 DEG. E CV drive shaft 1 ⅝" 6 spline output						
PARKING JACK	15000 lbs load rating, side twist, 2 ½" receiver, 24" travel						
HOPPER DIMENSIONS	N/A, enclosed with swingaway						
HP REQUIRED (WITH DRY WHEAT)	PTO - 60	PTO - 70	PTO - 80	PTO - 80	PTO - 90	PTO - 100	PTO - 120
CONVEYOR WIDTH (HUB FACE TO FACE)	132.5"				150"		
AXLE EXTENSION LENGTH	38"				32.5"		
CONVEYOR WEIGHT	5080 lbs	5400 lbs	6150 lbs	6630 lbs	8310 lbs	9500 lbs	9770 lbs
SWINGAWAY WEIGHT	1300 lbs						

	HEIGHT LOWERED	HEIGHT HALFWAY	HEIGHT RAISED	REACH LOWERED	REACH HALFWAY	REACH RAISED	HEIGHT AT LIFT ARMS HALFWAY	HEIGHT AT WHEELS RAISED	REACH AT LIFT ARMS HALFWAY	REACH AT WHEELS RAISED
2465 SA	8' 4.25" (2.546 m)	19' 7.25" (5.975 m)	31' 8" (9.652 m)	26' 6.75" (8.096 m)	25' 8.75" (7.842 m)	24' 0.5" (7.328 m)	13' 1.5" (4.102 m)	21' 5.75" (6.547 m)	25' 8.75" (7.842 m)	22' 2.5" (6.769 m)
2475 SA	14' 3" (4.343 m)	22' 9.75" (6.953 m)	36' 3" (11.049 m)	35' 9.5" (10.9093 m)	34' 1.5" (10.401 m)	31' 7.25" (9.632 m)	12' 7.5" (3.848 m)	21' 5.5" (6.541 m)	34' 1.5" (10.401 m)	29' 9.25" (9.074 m)
2485 SA	13' 9" (4.176 m)	22' (6.706 m)	42' 4" (12.893 m)	38' 8" (11.765 m)	38' 0.5" (11.595 m)	32' 7" (9.936 m)	13' 4" (4.064 m)	25' 6" (7.772 m)	38' 0.5" (11.595 m)	33' 4" (10.16 m)
2495 SA	11' 3" (3.429 m)	24' 3" (7.391 m)	47' 7" (14.503 m)	49' 1" (14.961 m)	47' 9" (14.554 m)	41' 11.75" (12.795 m)	13' 0.5" (3.975 m)	25' 6" (7.772 m)	47' 9" (14.554 m)	41' 11.75" (12.795 m)
24105 SA	10' 3.5" (3.137 m)	34' 9.75" (10.611 m)	54' 8.75" (16.681 m)	47' 8.5" (14.542 m)	45' 7.75" (13.907 m)	41' 9.5" (12.891 m)	20' 9.5" (6.337 m)	33' 1.5" (10.097 m)	44' 8.75" (13.633 m)	39' 1.75" (11.932 m)
24110 SA	10' 10.5" (3.315 m)	36' 6.5" (11.138 m)	57' 4" (17.475 m)	52' 7.75" (16.046 m)	50' 4" (15.342 m)	46' (14.021 m)	20' 9.5" (6.337 m)	33' 1.75" (10.103 m)	49' 5" (15.062 m)	43' 4.75" (13.227 m)
24120 SA	12' 1" (3.683 m)	40' (12.192 m)	62' 7" (19.075 m)	62' 7" (19.075 m)	59' 8.5" (18.199 m)	54' 6" (16.612 m)	20' 9.5" (6.337 m)	33' 1.5" (10.1 m)	58' 9" (17.907 m)	51' 10" (15.799 m)

Heights measured from bottom of conveyor spout to ground.



# BCX<sup>2</sup> 1515

## LOW PROFILE TRANSFER



### FEATURES

- 7 ½" hopper clearance;  
9" clearance at transition
- 28" discharge height
- 30" x 75" collapsible hopper
- Hydraulic, electric, or gas drive options

### BCX<sup>2</sup> 1515

BCX <sup>2</sup> 1515 LOW PROFILE TRANSFER	
CAPACITY	Up to 3800 bph
TUBE GAUGE	10" OD x 12 ga
BELT TYPE	15" wide chevron
BELT LENGTH	32' 8"
AXLE	2" sq. x .188"
HUB	4-bolt on 4", 2.50" pilot
TIRES	570 x 8
HOPPER DIMENSIONS	59" length x 20" width on narrow end, 33" width on wide end x 22 1/16" height
HP REQUIRED (WITH DRY WHEAT)	Electric - 5 Gas - 9
CONVEYOR WIDTH (HUB FACE TO FACE)	45.6"
CONVEYOR WEIGHT	642 lbs

	HEIGHT LOWERED	HEIGHT HALFWAY	HEIGHT RAISED	REACH LOWERED	REACH HALFWAY	REACH RAISED	HEIGHT AT LIFT ARMS HALFWAY	HEIGHT AT WHEELS RAISED	REACH AT LIFT ARMS HALFWAY	REACH AT WHEELS RAISED
BCX <sup>2</sup> 1515 LOW PROFILE TRANSFER	2' 7.75" (.806 m)	N/A	N/A	6' 6.5" (2 m)	N/A	N/A	N/A	N/A	N/A	N/A

The transfer has only one position.  
Heights measured from bottom of conveyor spout to ground.



# PITSTOP

**1800**

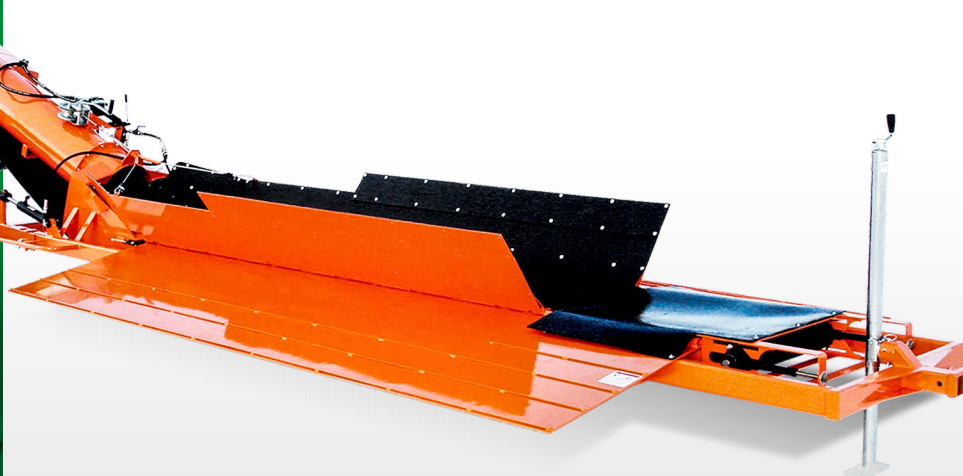
**UP TO 11,000 BPH  
25' LENGTH**

**2400**

**UP TO 18,000 BPH  
27' LENGTH**

## FEATURES

- Streamlined intake and redesigned discharge hood for faster grain flow and better grain containment
- Quick, convenient unloading
- Gentle handling and fast setup
- Low, 7 1/2" clearance
- 8' x 12' easy access dump platform
- Large, 32" x 114" hopper
- Hydraulic lift on transport wheels
- 28" discharge height
- Hydraulic, electric, or gas drive options
- Optional self-propelled kit available



PITSTOP		
	PITSTOP FX 1800	PITSTOP FX 2400
CAPACITY	Up to 11000 bph	Up to 18000 bph
TUBE GAUGE	14" OD x 12 ga	
BELT TYPE	18" wide chevron	24" wide chevron
BELT LENGTH	48' 3"	52' 1"
LIFT	Two 2" bore x 8" travel cylinders	
AXLE	3" sq. x .188"	
HUB	6-bolt on 6.0" - 4.62" pilot	
TIRES	6-bolt ST205/75R15 LRC 6PL	
PARKING JACK	7000 lbs, top spin, 2 1/2" receiver, 25" travel	
HOPPER DIMENSIONS	143 3/4" length x 52 5/8" width	143 3/4" length x 58 3/4" width
HP REQUIRED (WITH DRY WHEAT)	Electric - 10 Gas - 32	Electric - 15 Gas - 32
CONVEYOR WIDTH (HUB FACE TO FACE)	94.75"	
CONVEYOR WEIGHT	2970 lbs	3260 lbs

	HEIGHT LOWERED	HEIGHT HALFWAY	HEIGHT RAISED	REACH LOWERED	REACH HALFWAY	REACH RAISED	HEIGHT AT LIFT ARMS HALFWAY	HEIGHT AT WHEELS RAISED	REACH AT LIFT ARMS HALFWAY	REACH AT WHEELS RAISED
PITSTOP FX 1800	2' 3.75" (.705 m)	N/A	3' 7" (1.092 m)	5' 11.5" (1.816 m)	N/A	5' 9.25" (1.759 m)	N/A	N/A	N/A	N/A
PITSTOP FX 2400	3' 0.750" (.933 m)	N/A	4' 4" (1.321 m)	7' 1.75" (2.178 m)	N/A	6' 11.750" (2.127 m)	N/A	N/A	N/A	N/A

Heights measured from bottom of conveyor spout to ground.



# RAILCAR UNLOADER

**AGI BATCO 2442**  
**UP TO 14,000 BPH**



## FEATURES

- 4" hopper clearance
- Self-propelled with hydraulic lift
- Spring-loaded walking axles
- Four 6" wide high-performance wheels controlled by hydraulic joystick steering
- Comes standard with gas engine drive mounted on top side of conveyor tube
  - **Can be custom ordered with electric drive**
- Can be custom ordered in stainless steel (as shown in picture)

## RAILCAR

### 2442FL RAILCAR UNLOADER FMD

CAPACITY	Up to 14000 bph
TUBE GAUGE	14"OD x 12 ga
BELT TYPE	23.5" wide chevron ultimate
BELT LENGTH	100' 4"
LIFT	Hydraulic
FRAME TYPE	A-frame
AXLE	3" sq. x .188"
HUB	6-bolt on 6", 4.62" pilot
TIRES	ST205 75R15 6 PL
PARKING JACK	7000 lbs load rating, top twist, 2 1/2" receiver, 25" travel
HOPPER DIMENSIONS	Flaps 87 1/8" apart when lowered, 42 1/8" apart when in "up" position
HP REQUIRED (WITH DRY WHEAT)	Vanguard 37 HP EFI
CONVEYOR WIDTH (HUB FACE TO FACE)	92.25"
CONVEYOR WEIGHT	5000 lbs

	HEIGHT LOWERED	HEIGHT HALFWAY	HEIGHT RAISED	REACH LOWERED	REACH HALFWAY	REACH RAISED	HEIGHT AT LIFT ARMS HALFWAY	HEIGHT AT WHEELS RAISED	REACH AT LIFT ARMS HALFWAY	REACH AT WHEELS RAISED
	A	B	C	D	E	F	G	H	I	J
2442 FL RAILCAR UNLOADER FMD	9' 10.75" (3.016 m)	14' 1.25" (4.3 m)	17' 6.5" (5.35 m)	16' 3.5" (5 m)	14' 9.5" (4.5 m)	14' 4.5" (4.38 m)	10' 6.75" (3.22 m)	11' 8" (3.56 m)	12' 2" (3.71 m)	14' (4.27 m)

Heights measured from bottom of conveyor spout to ground.



# CUSTOM CONVEYORS

## BAG HANDLING

20" BELT



### FEATURES

- Custom-built bag handling system reduces manpower for transporting up to 100 lb or 50 kg bags
- Designed for either ground level or dock height warehouse bag-handling operations
- Durable solid decking
- Electric over hydraulic drive
- Single operator required to stack bags at up to 20 bags/minute

### AVAILABLE LENGTHS

- **Two tier:**  
extends 24' to fill a 20' container
- **Three tier:**  
extends 48' to fill a 53' container



# CUSTOM UNDERBIN CONVEYORS

10" TUBE // 13" OR 15" BELT  
18' TO 138' LENGTHS



### FEATURES

- Electric drives available in: top drive, pinch top drive and pinch S-drive
- Square or round poly hood spout included
- Underbin tail ends can be either sealed hopper lids for continuous protection or collapsible hopper intakes for easy filling
- Bolt-on bin inlet hopper
- Belt return comes standard with weather guards

### OPTIONS

- Elevating transition unit adds a minimum of 33" of height
- Stainless steel tubing, rollers, shafting and ends
- Enclosed underside panels for extra protection





AGI is a global leader in supplying farm and commercial customers with the manufacturing, planning, and engineering of full equipment solutions for grain, seed, fertilizer, feed, and food. AGI's expertise enables the storage, blending, mixing, conveying, conditioning, processing, and protection of agricultural products and inputs worldwide.

**Your safety is our highest priority.**

Please read and understand the operator's manual and safety decals before using. Use and maintain products properly, and do not modify. Keep guards in place when operating and follow all product manuals and safety decals. For all AGI products, if guards, safety decals, or manuals are damaged or missing, contact your AGI sales or dealer representative for replacements. Images and information contained in this brochure are presented for general information.

Batco, AGI and the AGI logo, are trademarks of Ag Growth International Inc.

198 Commerce Drive, Winnipeg, Manitoba, Canada R3P 0Z6

P 855.432.1990

     @aggrowthintl

**AGGROWTH.COM**