



AGI



AGI

GRAIN PROCESSING SOLUTIONS



Mission

AGI is passionately committed to delivering innovative solutions to customers. Through qualitative and ethical practices, their equipment saves process losses and maintains hygienic standards in food processing and complimentary industries.

Infrastructure

AGI design centers are equipped with high-end servers and workstations complete with the latest CAD/CAM software and tools.

Our state-of-the-art assembly shop, paint shop, and quality control division ensure only precision machineries leave

our factory, meeting the exact requirements set from our clients.

The service division is operated by a team of over 100 highly experienced service engineers and professionals to support our extensive client base. They are supported by the marketing,

administration and finance divisions that help to provide seamless integration from front and back of office processes.

Today, AGI leads the India market and continues to grow internationally with new, satisfied customers every day.



- 3,500 sq/m fabrication and manufacturing facility
- 3,500 sq/m assembly and paint facility
- Dedicated engineering department to achieve higher yield and profitability.
- Full-fledged R&D department - improving the performance of the equipment thereby minimizing process losses and offering innovative solutions

Manufacturing Facility

AGI Milltec® changed the Indian rice processing industry by producing top quality machinery locally, while following international quality standards. This resulted in the highest quality machine but at an affordable price. Following this quality and affordability model, AGI has made these rice milling solutions available to global customers.



Manufacturing Capabilities Include:

- Laser cutting
- CNC machine shop
- CNC press brake
- CNC turret punching
- Robotic MIG welding station
- Grit blasting



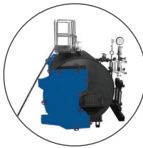
AGI Rice Milling Product Portfolio

AGI is the market leader in paddy processing and has commissioned more than 15,000 rice mills.

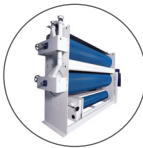
Storage Silos



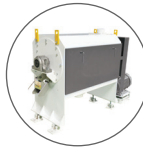
Parboiling, Drying & Steam Generation



Rice Processing Solutions



Pulses Processing Solutions



Color Sorting, Blending & Packing Solutions



Grain Silos

Pre-cleaning

Steam Generation

Parboiling & Dryer

De-stoning

Cleaning

Hulling

De-husking

Whitening

Polishing

Grading

Sorting

Blending

Packing

AGI is the market leader offering complete end-to-end rice milling solutions for turnkey project implementation.

Storage Silos

Grain storage silos are the best alternative for traditional storage systems. Our silos avoid storage losses like rodents, moisture, and insects. We design our silos based on the project requirements and provide ease of assembly, hygienic handling and use quality materials.

AGI silos are made of high-quality steel and high-quality metal galvanized up to 600 GSM. We have highly qualified and experienced in-house engineers who provide the best service anywhere in the world. We have a dedicated project management team for every installation to ensure that installation is done according to technical specifications and on time.



Hopper Bottom Silos
50 Ton - 500 Ton

Flat Bottom Silos
500 Ton - 15,000 Ton



Packaged Boiler

AGI offers fully automatic solid fuel fired steam boilers designed as per IBR (Indian Boiler Regulations) and has high thermal efficiency.



ADVANTAGES

- High thermal efficiency
- Pneumatic over feed, three pass, wet back
- Designed for ease of operation and hassle free maintenance
- Multi-fuel: fire wood / coal / biomas / saw dust / wood chips / agro waste

TECHNICAL SPECIFICATIONS

BOILER CAPACITY	2T	2.5T	3T	4T	4.5T	5T
MAX STEAM OUTPUT F&A 100°C RATING	2,000kg/hr	2,500kg/hr	3,000kg/hr	4,000kg/hr	4,500kg/hr	5,000kg/hr
TYPE	3-pass multi tubular	3-pass multi tubular	3-pass multi tubular	3-pass multi tubular	3-pass multi tubular	3-pass multi tubular
MAX OPERATING PRESSURE	10.54kg/cm ²	10.54kg/cm ²	10.54kg/cm ²	10.54kg/cm ²	10.54kg/cm ²	10.54kg/cm ²
FUEL CONSUMPTION (BASED ON 3,500KCAL/KG)	429 kgs/hr	508 kgs/hr	609 kgs/hr	812 kgs/hr	913 kgs/hr	1015 kgs/hr
TOTAL CONNECTED LOAD	12hp	15hp	15hp	26.0hp	31.5hp	31.2hp
THERMAL EFFICIENCY (HEAT RECOVERY UNIT - HRU)	76% +/-2%	76% +/-2%	76% +/-2%	76% +/-2%	76% +/-2%	76% +/-2%

Note: EXTERNAL WATER WALL BOILER is Supplied for Capacity above 5 tons/hour

Online Cooker

Online Cooker is a steaming process which ensures uniform steaming of each and every paddy grain.

Paddy will be given thermal treatment dependent on temperature and time.

The gelatinized paddy is then thermally treated for a prescribed time, based on the clients desired color.

This system produces quality rice for cooking, with less broken and minimal discoloration. The entire process is monitored and controlled by PLC.

Application: Only paddy.

ADVANTAGES

- Fully automated system monitored and controlled by PLC
- Suitable for all paddy varieties
- Best cooking and homogeneous color
- High productivity and consistent quality
- Easily retrofitted to existing parboiling plants
- Fully enclosed system to avoid steam losses
- Hygienic process for easy operation
- Stainless steel construction



TECHNICAL SPECIFICATIONS

MODEL	CAPACITY (BATCH)	DRIVE	MOTOR (HP)	STEAM PRESSURE	STEAM VOLUME	CONTROL	OVERALL SIZE (Lx-WxH)
POCA1	12T	Gear Box 20 rpm	2	1.5 to 2 Bar	2 to 2.5 TPH	PLC Control	4.5 x 4.5 x 12 Mtrs
POCB1	16T	Gear Box 20 rpm	2	1.5 to 2 Bar	2 to 2.5 TPH	PLC Control	4.5 x 4.5 x 13.5 Mtrs
POCC1	20T	Gear Box 20 rpm	2	1.5 to 2 Bar	2 to 2.5 TPH	PLC Control	4.5 x 4.5 x 15.5 Mtrs
POCD1	24T	Gear Box 20 rpm	2	1.5 to 2.5 Bar	3 to 3.5 TPH	PLC Control	4.5 x 4.5 x 18 Mtrs

Note: Unless otherwise specified capacity (ton/batch) should be considered for paddy only



Parboiling

Parboiling is the process of hydrothermal treatment on paddy which is done in three steps: soaking, steaming and drying.

Parboiling causes a gelatinization of starch during boiling, steaming and cooling, the amylase molecules re-associate with each other and forms tightly packed structure and mends the crack that developed in the endosperm. Parboiling increases grain translucency and hardness, decreases chalkiness, and is less sticky after cooking and reduces breakage.

ADVANTAGES

- Ergonomic design and convenient feeding and discharging system
- Impeccable service, SS construction material Series 200
- Bolted construction ensures minimum fabrication works at site
- Inflexible and simple construction
- Fully integrated with automation control (SCADA system)
- Efficient heat exchanger with aluminium extruded fins, which ensure maximum heat transfer

TECHNICAL SPECIFICATIONS

CAPACITY	18T	24T	32T	40T	48T	64T
STEAM PADDY 4HRS/BATCH (3 BATCH/DAY)	45TPD	60TPD	80TPH	100TPD	125TPH	160TPH
PARBOILED PADDY 8HRS/ BATCH (2 BATCH/DAY)	36TPD	48TPD	64TPD	80TPD	100TPD	128TPD
SPACE REQUIRED	12 x 10 Mtrs	12 x 10 Mtrs	14 x 11 Mtr	18 x 11 Mtrs	21 x 14 Mtrs	25 x 15 Mtrs

Note : TECHNICAL SPECIFICATIONS mentioned is for Single Stage Parboiling system

Drying

The parboiled paddy needs to be dried to bring to the desired ideal moisture level of 14% before milling.

There are two types of paddy dryers available, LSU dryers with batch type drying and LSU dryers with continuous drying.

Application: Only paddy.

TECHNICAL SPECIFICATIONS

S. NO	MODEL	CAPACITY (TOP/ BATCH)	ROTOR (HP)	BLOWER (HP)	OVERALL SIZE (LX-WXH)
1	PPDC1	18T	2	10	4 x 8 x 14.5 Mtrs
2	PPDD1	24T	2	15	4 x 8 x 17.7 Mtrs
3	PPDE1	32T	2	20	5 x 8.5 x 17.7 Mtrs
4	PPDF1	40T	2	25	5 x 8.5 x 21 Mtrs
5	PPDH1	48T	3	40	7 x 11 x 21.4 Mtrs
6	PPDG1	64T	3	50	7 x 11 x 24.5 Mtrs

Note: Unless otherwise specified capacity (ton/batch) should be considered for paddy only

Fluidized Bed Dryer

A continuous Fluidized Bed Dryer (FBD) system is used to reduce moisture from soaked paddy in a parboiling system.

In FBD the wet paddy is conveyed over a perforated bed at the drying chamber. The system blows hot, ambient air through the holes of a perforated bed. The air blown will be passed through the wet paddy, behaving like a fluid and continue to flow until completely removing the moisture. Hence the name FBD.

The air velocity is adjusted to ensure fluidization, the wet paddy is thus completely exposed to drying. This process results in a high rate of heat transfer.

Application: Only paddy.

ADVANTAGES

- Advanced design for high moisture reduction up to 5-6 % in single pass
- FBD guarantees fast, continuous and homogeneous drying
- Easily retrofitted to existing parboiling plants to increase productivity
- Provide homogeneous color for better cooking quality
- Helps in reducing frequency of cleaning cycles in LSU type dryers
- Construction is made up of SS material



TECHNICAL SPECIFICATIONS

MACHINE TYPE	PFDB	PFDC	PFDD
CAPACITY (TON / HOUR)	10 to 12	14 to 16	18 to 20
PADDY INPUT MOISTURE	35%	35%	35%
PADDY OUTPUT MOISTURE (AFTER SINGLE PASS)	30%		
AIR TEMPERATURE REQUIRED FOR DRYING	Ambient Temperature		
AIR VOLUME	16500 CFM	22000 CFM	26000 CFM
SPECIFICATION OF MATERIAL (AIR CHAMBER)	Stainless steel or Mild steel		
SPECIFICATION OF MATERIAL (PADDY CONTACT AREA)	Stainless steel (2mm)		
SPECIFICATION OF MATERIAL (AIR BLOWER)	Mild steel		
POWER IN HP	30	40	50

Note: Unless otherwise specified capacity (ton/batch) should be considered for paddy only

Raw Paddy Dryer

Paddy Dryers are used to reduce the moisture content in paddy grain for preventing spoilage during storage.

The harvested paddy will have a very high moisture level and may not be suitable for storing or milling directly. Hence the need to dry the paddy uniformly to the required moisture level of 14%. Various problems such as discoloration, loss of germination, mold development, insect infestation, odor development, loss of yield etc. can occur if not dried properly.

The Paddy Dryer system consists of a hot air furnace and a vertical dryer. Hot air is generated in the furnace suitable for multi-fuel and is blown across the paddy inside the dryer where the excess moisture is then removed. The paddy is circulated a few times until it reaches its required moisture level.

Application: Only paddy.



ADVANTAGES

- Simple construction and operation
- Stainless steel and mild steel construction
- Ergonomic design, convenient feeding and discharging system
- Vertical design, requires less space
- Optimal operational efficiency
- Highly durable and less maintenance required
- Paddy Dryer integrated with cyclonic husk furnace, reduces the drying costs compared to other conventional method

TECHNICAL SPECIFICATIONS

MODEL	CAPACITY (TON/BATCH)	ROTOR (HP)	BLOWER (HP)	OVERALL SIZE (LxWxH)
PRDC1	16T	2	7.5	3.5 x 7.5 x 13 Mtrs
PRDD1	24T	2	12.5	4 x 8 x 15 Mtrs
PRDE1	32T	2	15	4 x 8.5 x 18 Mtrs
PRDF1	40T	2	20	5 x 8.5 x 18 Mtrs
PRDH1	48T	3	30	7 x 11 x 18 Mtrs
PRDG1	64T	3	40	7 x 11 x 21 Mtrs

Note: Unless otherwise specified capacity (ton/batch) should be considered for paddy only

Pulse Dryer

AGI's Pulse Dryer is designed to provide the best-in-the-class drying solution. This Fit-and-run equipment, with a compact design and a very less power requirement, provides the most economical drying while ensuring uniform and controlled drying for pulses (non-rice application).



ADVANTAGES

- Designed For Drying “full, round pulses”.
- Highly efficient and power saving design.
- Hygienic and user friendly equipment.
- Suitable for handling all types of pulse applications.

TECHNICAL SPECIFICATIONS

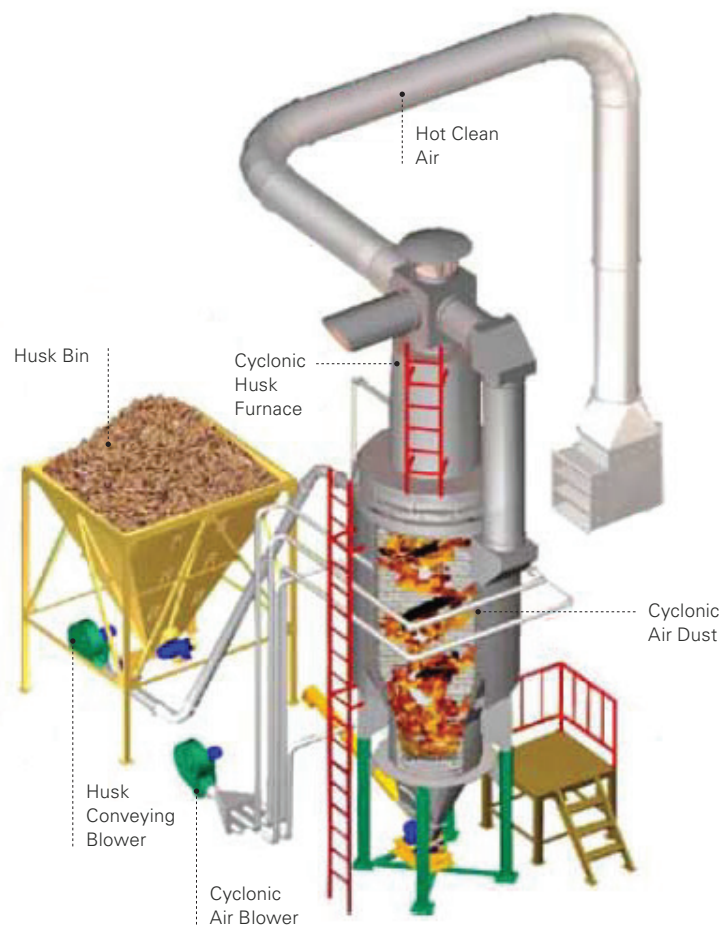
DESCRIPTION	GDRB-1	GDRB-1	GDRB-1	GDRB-1
MAX CAPACITY (TONNES PER BATCH)	10	12	15	20
DRYING RATE (% PER HOUR) FOR CHANA	1%	1%	1%	1%
DRYING RATE (% PER HOUR) FOR OTHERS	0.25-0.5%	0.25-0.5%	0.25-0.5%	0.25-0.5%
GRAIN FLOW DIRECTION	Vertical	Vertical	Vertical	Vertical
MOISTURE MEASUREMENT	Manual			
BURNER	Gun Type			
IGNITION	High Pressure Automatic Ignition			
FIRING FUEL	Diesel/Gas (LPG or CNG)	Diesel/Gas (LPG or CNG)	Diesel/Gas (LPG or CNG)	Gas (LPG or CNG)
POWER REQUIREMENT	8.5 HP	8.5 HP	9.5 HP	16.5 HP
SPACE REQUIRED (L X B X H) MTRS	3.8 x 2.6 x 9.2	3.8 x 2.6 x 9.95	3.8 x 2.6 x 10.75	4.6 x 3.5 x 13

Cyclonic Husk Furnace

The Cyclonic Husk Furnace is an alternate source of hot air supply for dryers. The furnace produces clean hot air without smoke. It reduces energy costs by replacing an oil burner and gas fired furnaces.

Cyclonic Husk Furnace is equipped with an automatic husk feeding and temperature controlled system.

Application: Husk only.



ADVANTAGES

- High efficiency combustion produces clean hot air, smokeless, pollution-free and environmentally friendly
- Digital temperature controller system provided with husk feeding system (auto controller)
- 2/3 dryer can be connected with a single husk furnace
- Huge husk savings compared to conventional furnace
- The spiraling vortex of air forces ash to fall to the bottom and the cooling system reduces the ash temperature to below 35°C

TECHNICAL SPECIFICATIONS

CYCLONIC HUSK FURNACE	HUSK CONSUMPTION KG/HR	HEAT ENERGY KCAL/HR	POWER IN KW	POWER IN BTU/HR (BRITISH THERMAL UNIT)	HOT AIR TEMP IN DEG-C	TOTAL POWER REQUIRED IN HP	OVERALL SIZE (LXWXH)
PCFY1 (500C)	80	240000	280	955360	90-110	4.25	2 x 6 x 7 Mtrs
PCFA1 (700C)	100	300000	350	1194200	90-110	5.5	3 x 8 x 8 Mtrs
PCFB1 (2000C)	180	540000	630	2149560	90-110	7.5	3.5 x 10 x 10 Mtrs
PCFC1 (3000C)	250	750000	875	2985500	90-110	7.5	4 x 12 x 11.5 Mtrs

Note: Unless otherwise specified capacity (ton/batch) should be considered for paddy only

Drum Cleaner

The Drum Cleaner ADCB-1 machine introduced by AGI Milltec has been developed to assure the best possible performance combined with a user-friendly operation and installation. The concept of this machine is designed with our many years of experience in rice milling. These unique designs are versatile concept for all variety of grain processing.

The Drum Cleaner is built with a single sieving drum made-up of wired weld mesh and held at one end by a drive shaft in overhung position. The 1st half length of the drum is plain and 2nd half is welded with conveyor blade to convey the impurities into collection outlet. There will be 2 supporting rollers at the other end of the drum to hold the drum

Application: Paddy, wheat, pulses, seeds and millets. Capacity will vary with bulk density and moisture.



ADVANTAGES

- Rugged and compact design
- Self-cleaning brush pad
- Heavy duty weld mesh sieve drum
- Higher degree of cleaning
- Dust proof operation
- Optional dust collecting aspiration

TECHNICAL SPECIFICATIONS

MACHINE TYPE	ADCB - 1
CAPACITY ON WHEAT BPH	100
GEARED MOTOR POWER (HP/KW)	0.75 / 0.55
VOLTAGE (V) FREQUENCY (Hz)	415 / 50
GEARED MOTOR RPM	21
PRIMARY SIEVE DRUM SIZE	DIA. 950 x 1100 L
SECONDARY SIEVE DRUM SIZE	-
PRIMARY SIEVE SIZE	25 x 25 MM
SECONDARY SIEVE SIZE	-
TOTAL SIEVING AREA SQ. M	3.3
WEIGHT	450
ASPIRATION (OPTIONAL)	20 CMM
OVERALL SIZE LxWxH in MM	2180 x 1154 x 1775

Note: Unless otherwise specified capacity (ton/batch) should be considered for paddy only

Pre Cleaner

The Pre Cleaner is designed to remove all impurities for all types of grains. The equipment is intended to remove foreign particles such as stones, immature grains, and other impurities which differ significantly in size, shape and floating velocity from the grain prior to processing.

These contain metal and wooden sieves, as well as a scalperator drive to facilitate easy cleaning of grains and the removal of sticks and straws. They also have an in-built blower and aspiration system.

Application: Paddy, wheat, pulses, seeds and millets. Capacity will vary with bulk density and moisture.



ADVANTAGES

- Fully bolted construction, minimum fabrication works at site
- Welded construction for rigidity and strength
- Built in blower and aspiration system
- Separate scalperator with drive to remove sticks and straws
- Double aspiration channel and rubber balls for self-cleaning of sieves

TECHNICAL SPECIFICATIONS

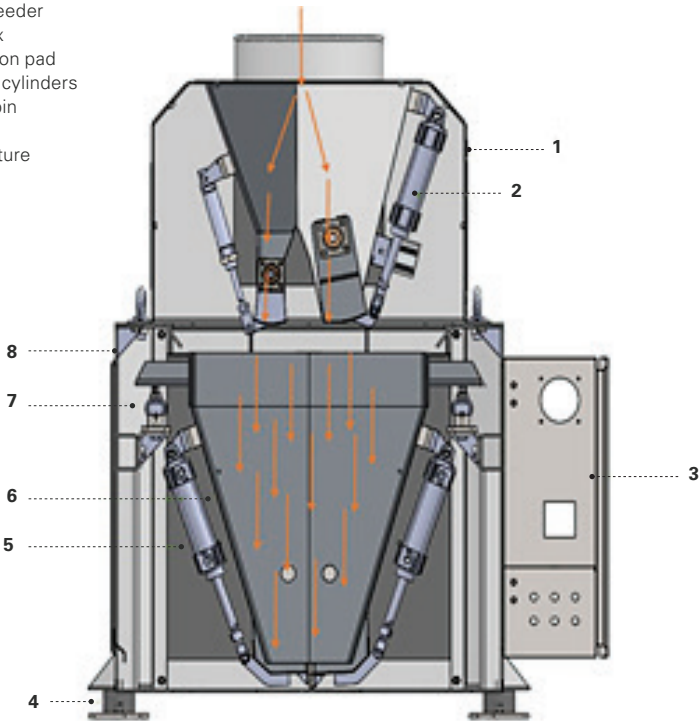
MACHINES	RPCZ-03	RPCA-03	RPCB-03	RPCC-03	RPCA-10	RPCB-10	RPCC-10
CAPACITY-TPH ON PADDY	3~4	6~8	12~16	15~20	6~8	12~16	15~20
CAPACITY-TPH ON WHEAT	4~5	8~10	16~20	20~25	8~10	16~20	20~25
NO. OF SIEVE DECK	Single Deck	Single Deck	Double Deck	Double Deck	Single Deck	Double Deck	Double Deck
TOTAL SIEVING AREA IN SQ. MT	2	4	8	12	4	8	12
MOTOR	1 HP 960RPM	2 HP 960RPM	2 HP 960RPM 0.75 HP	2 HP 960RPM 0.75 HP	2 HP 960RPM	2 HP 960RPM 0.75 HP (Scalperator)	2 HP 960RPM 0.75 HP (Scalperator)
MOTOR FOR BLOWER	3HP 3000RPM	5HP 3000RPM	7.5HP 3000RPM	10HP 3000RPM	5HP 3000RPM	7.5HP 3000RPM	10HP 3000RPM
ASPIRATION	3500CMH, 100MM WC	5000CMH, 100MM WC	8000CMH, 100MM WC	10500CMH, 100MM WC	Volume- 5000CMH Pressure- 100MM WC	Volume- 8000CMH Pressure- 100MM WC	Volume- 10500CMH Pressure- 100MM WC
NO OF OUTLET	6 NO'S	6 NO'S	6 NO'S	6 NO'S	6 NO'S	6 NO'S	6 NO'S
WEIGHT OF MACHINE	~950 Kgs	~1300 Kgs	~2000 Kgs	~2400 Kgs	~1300 Kgs	~2000 Kgs	~2400 Kgs
OVERALL DIMENSION (L X W X H) IN (MM)	2765 x 1280 x 2450	2840 x 1800 x 2812	2982 x 1793 x 3352	2982 x 2293 x 3454	2840 x 1800 x 2812	2982 x 1793 x 3352	2982 x 2293 x 3454

Flow Controller

The Flow Controller assures the best possible performance combined with a user friendly operation and installation. The concept of this machine is designed and perfected over our many years of experience in the grain processing industry. These unique designs deliver a versatile concept for all varieties of finished, or semi-finished products.

This machine is a mechatronics type of machine. Therefore, the performance is controlled and measured by the combination of mechanical, pneumatic and PLC system.

- 1 Rough and fine feeder chamber
- 2 Pneumatic cylinder for rough feeder
- 3 Control box
- 4 Anti-vibration pad
- 5 Pneumatic cylinders
- 6 Weighing bin
- 7 Load cell
- 8 Main structure



ADVANTAGES

- Plant productivity can be monitored
- Controlled automation system by a PLC
- Flow rate can be controlled as per customer requirements
- Data can be stored in a removable memory drive
- Simple calibration process
- Touch screen color HMI (Human Machine Interface)
- Data monitoring and controlling by a PC (optional)



TECHNICAL SPECIFICATIONS

MACHINE TYPE	AFCA-10	AFCB-10
CAPACITY (TON/HR) ON PADDY	2.5-12	2.5-25T
ACCURACY	± 0.5%	± 0.5%
VOLTAGE (V) FREQUENCY (HZ)	415V/50Hz	415V/50Hz
AIR PRESSURE REQUIRED	5 to 6 Bar	5 to 6 Bar
AIR CONSUMPTION IN M³ /HR.	3.5	3.5
WEIGHT (KG)	180	220
OVERALL SIZE (LxBxH IN MM)	960 x 700 x 1150	1210 x 860 x 1270

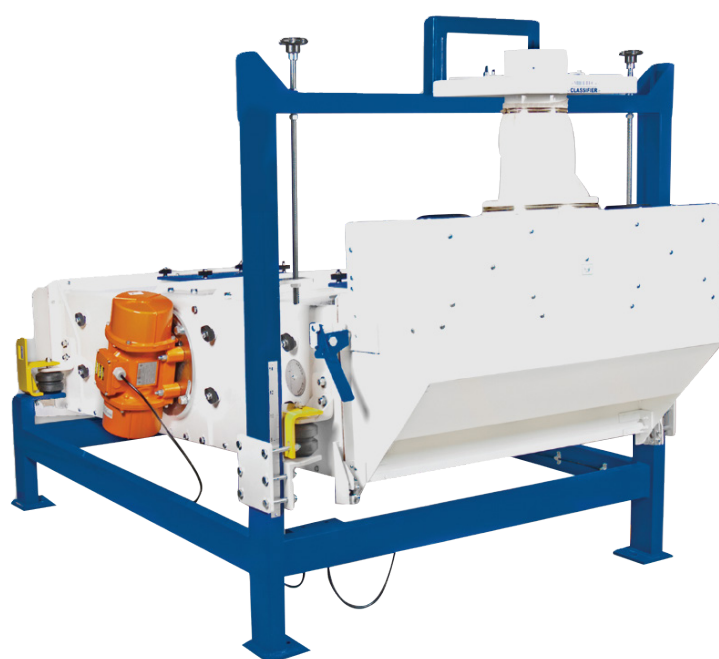
Note: Unless otherwise specified capacity (TON/HOUR) should be considered for paddy only. Capacity will vary based on the product density

Classifier

AGI Classifier efficiently separates oversized and undersized impurities from food grains. The machine is specifically designed for paddy rice, dal and seeds. The machine also allows for grading different sizes of a commodity.

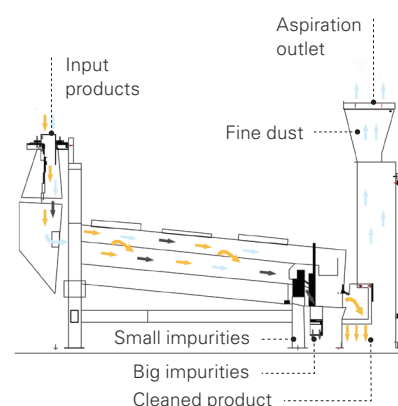
The inbuilt self-cleaning system ensures optimum efficiency during the production cycle. As per the specific demands of millers, we provide the classifier range in four models - RCLA-1, RCLB-1, RCLC-1 AND RCLD-1

Application: Paddy, wheat, pulses, seeds and millets. Capacity will vary with bulk density and moisture.



ADVANTAGES

- Precise screen size ensure high separating efficiency during the process
- Capacities ranging from 3TPH – 12 TPH
- Dust free operation with aspirator
- Robust construction with low maintenance
- Angle controller to adjust slope angle



TECHNICAL SPECIFICATIONS

MACHINE TYPE	RCLA-1		RCLB-1		RCLC-1		RCLD-1	RCLZ-2	RCLA-10	RCLB-10
CAPACITY (TON/HR) ON PADDY WITH PRE-CLEANER	MEDIUM GRAIN 6~8	LONG GRAIN 4~5	MEDIUM GRAIN 8~12	LONG GRAIN 5~8	MEDIUM GRAIN 6~8	LONG GRAIN 4~5	---	4	6~8	10~12
CAPACITY (TON/HR) ON RICE	10~12		13~15		10~12		2~3	---	10~12	13~15
MOTOR IN HP/ KW	0.50/0.37 - 2Nos		1/0.75 - 2Nos		0.5/0.37 - 2Nos		0.5/0.37 - 2Nos	0.75/1.0	0.50/0.37 - 2Nos	1/0.75 - 2Nos
VOLTAGE (V) FREQUENCY (HZ)	415/50		415/50		415/50		415/50	415/50	415/50	415/50
ASPIRATION (CMM)	90		130		90		90	---	90	130
BLOWER	7.5HP		12.5		7.5HP		7.5HP	---	7.5	12.5
WEIGHT (KG)	650		1300		780		740	850	1170	1470
OVERALL SIZE	2659 x 1482 x 1674		2659 x 1998 x 1729		2632 x 1502 x 1662		2752 x 1482 x 1643	2363 x 1492 x 2160	2558 x 1492 x 1612	2558 x 2000 x 1612

Note: Unless otherwise specified capacity (TON/HOUR) should be considered for paddy only

De Stoner

AGI De Stoner facilitates the removal of stones and other foreign particles from grain inputs by separating impurities on the basis of their densities by adjusting the aspiration system. De Stoners can be used to segregate the granular products where the particles are approximately the same size but differ in weight.

AGI De Stoner efficiently removes small amounts of heavy material from a larger quantity of light material. These machines are designed to have a long operational life and are installed with closed circuit dust aspiration and lighting systems to enable easy viewing of the components of the equipment.

Application: Only paddy.



ADVANTAGES

- Efficient and precise separation of stones and heavy material based on density difference
- Provided with closed circuit dust aspiration system
- Fitted with imported vibro motors for trouble free and long life and quiet operation
- Sturdy, rigid and heavy duty construction
- Lighting system for viewing
- SS dimple screen for longer life
- Aerodynamically designed air hood box

TECHNICAL SPECIFICATIONS

MACHINE TYPE	RDSA1	RDSB1
CAPACITY (TON/HR) ON PADDY	6~8	8~10
VIBRO MOTOR-HP/KW	0.50/0.37 - 2Nos	1/0.75 - 2Nos
VOLTAGE (V) FREQUENCY (HZ)	415/50	415/50
ASPIRATION (CMM)	130	180
STATIC PRESSURE MM-WC	70	70
WEIGHT (KG)	550	1070
OVERALL SIZE (MM)	1850 x 1750 x 2200	1564 x 2176 x 2297

Note: Unless otherwise specified capacity (TON/HOUR) should be considered for paddy only

MACHINE TYPE	RDSC - 10	RDSD-10
CAPACITY (TON/HR) ON PADDY	6~8	10~12
VIBRO MOTOR-HP/KW	0.5/960-2 Nos	1/960-2 Nos
ASPIRATION (CMM)	180	180
STATIC PRESSURE MM-WC	220	220
RESORTING BLOWER (FAN) MOTOR POWER-HP/RPM	1 / 1440	1 / 1440
BLOWER (FAN) MOTOR HP/RPM	15 / 3000	20 / 3000
WEIGHT-KG	870	1010
OVERALL SIZE (MM)	1722 x 1727 x 1975	2381 x 1870 x 2284

Rice De Stoner

AGI Rice De Stoner removes stones, and heavy particles from in-feed product. The machine performs on the basis of density difference, controlled by fluidization.

Application: Only rice.

ADVANTAGES

- Rugged design
- Common motor for blower as well as oscillating deck
- Stones outlet gate can be controlled by timer setting
- Sieves made up of stainless steel
- Suitable for all type of pulses



TECHNICAL SPECIFICATIONS

MACHINE TYPE	RDSE-1	RDSF-1
CAPACITY (TON/HR) ON RICE	2	4
MOTOR-HP/KW	1/0.75	2/1.5
VOLTAGE (V) FREQUENCY (HZ)	415/50	415/50
WEIGHT (KG)	200	300
OVERALL SIZE (MM)	870 x 1250 x 1150	1572 x 1250 x 1150

Unless otherwise specified capacity (TON/HOUR) should be considered for rice only

Pneumatic Sheller

AGI Pneumatic Sheller is fully automatic with imported vibro feeder. The machine is capable of attaining up to 95% shelling, double the rubber roller life with less broken grains than under normal running conditions.

De-husker removes the husk layer of paddy by passing the grains between two counter revolving rubber rollers. A completely automatic system ensures correct feed rate and pressure between rubber rollers consumption drastically.

Application: Paddy and millets.

Highly efficient for:

- Raw rice
- Steam rice
- Parboiled rice

ADVANTAGES

- Infinite adjustment of degree of shelling by adjusting compressed air pressure
- Sensor enabled panel, disengages the rubber rolls automatically when input product flow stops
- Feed rate can be controlled electronically
- A built in cooling system to dissipate heat generated on the rubber rolls
- Auto/manual mode of working



TECHNICAL SPECIFICATIONS

MACHINE TYPE	RPSA-1		RPSC-1		RPSA-10
CAPACITY (TON/HR) ON PADDY	MEDIUM GRAIN 3~4	LONG GRAIN 2~2.5	MEDIUM GRAIN 5~6	LONG GRAIN 3~4	MEDIUM GRAIN 3~4
MOTOR-HP/KW	10/7.5, 12.5/9.375		15/11.19		10/7.5 & 12.5/9.4
VOLTAGE (V) FREQUENCY (HZ)	415/50		415/50		415/50
WEIGHT (KG)	600		800		780
OVERALL SIZE (MM)	1371 x 881 x 1369		1394 x 940 x 1387		830 x 1380 x 1415
RUBBER ROLLER SIZE (INCH)	10		12		10

Husk Separator

Husk Separator is used to aspirate husk/light particles from the product stream. A built in fan blows the air accross the product stream to take away lightweight particles.

This machine is specially designed to separate husk from shelled rice.

Application: Paddy and millets.

Highly efficient for:

- Raw rice
- Steam rice
- Parboiled rice

ADVANTAGES

- Dynamically balanced blower with adjustable flaps for husk separation
- Accurate separation from paddy and brown rice by the differential air pressure created inside the machine chamber
- Low maintenance required for operation



TECHNICAL SPECIFICATIONS

MACHINE TYPE	RHSA-1		RHSB-1	
CAPACITY (TON/HR) ON PADDY	MEDIUM GRAIN 2~3	LONG GRAIN 1~2	MEDIUM GRAIN 3.5~4	LONG GRAIN 2~2.5
MOTOR-HP/KW	3.0/2.2		5/3.7	
VOLTAGE (V) FREQUENCY (HZ)	415/50		415/50	
WEIGHT (KG)	~750		~900	
OVERALL SIZE (MM)	1756 x 1724 x 1150		1828 x 2172 x 1270	

Tray Separator

AGI Tray Separator is designed for high-capacity inputs and enable our customers to efficiently separate brown rice from paddy. They can be customized by customers to suit their speed requirements and can provide three distinct types of outputs based on the customer's selection: paddy, brown rice, and a mixture of paddy and brown rice.

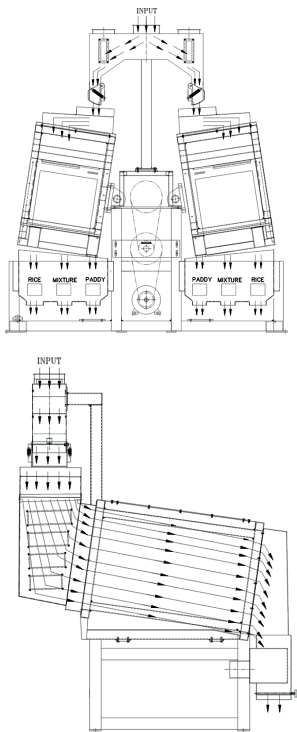
Future wear and tear of the trays and other component parts are minimized using stainless steel.

AGI Tray Separator can efficiently separate paddy and brown rice by its differential density, the separated products are discharged via three separate outlets for brown rice, paddy and a mixture of paddy and rice. The paddy is then recycled in the Pneumatic Sheller but, the mixture of paddy and rice is recycled in Tray Separator itself.

Application: Brown rice.

ADVANTAGES

- Higher output with adjustable speed (optional)
- Separations in three distinct classifications: paddy, brown rice and mixture
- Stainless steel trays to minimize wear and tear
- Sensor for flow indication



TECHNICAL SPECIFICATIONS

MACHINE TYPE	RTSA-1	RTSB-1	RTSA-10	RTSB-10	RTSZ-1
CAPACITY (TON/HR) ON PADDY	2~4	6~10	4~6	10~12	2~4
MOTOR-HP/KW	3/2.2	3/2.2	3/2.2	3/2.2	3/2/2
VOLTAGE (V) FREQUENCY (HZ)	415/50	415/50	415/50	415/50	415/50
ASPIRATION CMM	5	10	5	10	5
WEIGHT (KG)	800	1100	1220	1730	800
OVERALL SIZE (MM)	1290 x 1678 x 2153	1987 x 1678 x 2153	1865 x 1715 x 2460	2150 x 1840 x 2475	1290 x 1678 x 2153

Note: Unless otherwise specified capacity (TON/HOUR) should be considered for paddy only

Husker

The new Husker machines have been developed to assure the best possible performance combined with a user-friendly operation and installation. This machine is designed with our many years of experience in the grain processing field. These unique designs are versatile concepts for various finished/semi-finished products.

The hulled mixture (rice, husk and a few escaped paddy) enters into the husk separator. This machine uses suction pressure to suck the lighter particles (husk and immature grains) and more dense particles (rice and paddy) out and are discharged through an output.

ADVANTAGES

- A distribution shaft was introduced for equal product distribution throughout the length.
- The casing wear part is made with AR (Abrasive Resistance) steel material.
- Provide safety guards for moving parts



TECHNICAL SPECIFICATIONS

MACHINE TYPE	CAPACITY	MOTOR	BELT	OVERALL SIZE OF THE M/C (L x W x H)
RHSZ-1 (HUSK ASPIRATOR)	3-4 TPH Paddy (Medium Grain)	5 HP, 1440 RPM, 415V, 50 Hz	Belt Drives	2435 x 1560 x 1217 mm
CMR HUSKER RHSY-1	6 TPH Paddy	7.5 HP, 6-POLE, 3-PHASE, 415 V, 50 Hz, 1450 RPM	V Belt	2715 x 1851 x 1827 mm

Note: Capacity may vary depending upon product input density and moisture.

Thickness Grader

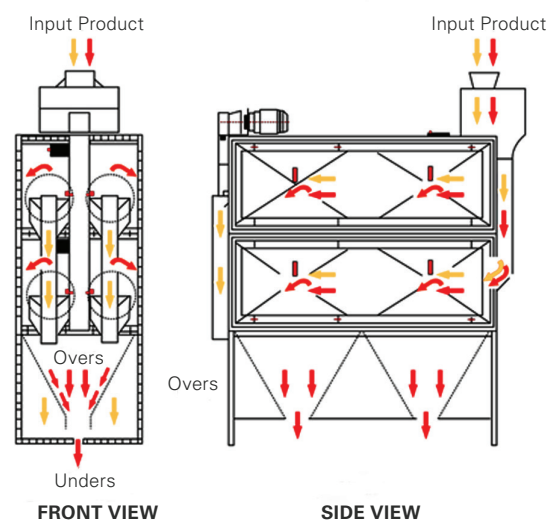
AGI Thickness Grader is used to separate various grains by thickness, for both brown and polished rice. The material is processed through revolving cylindrical screens that are efficient for separating admixture of oversized or undersized grains. These can also be used to remove immature or broken grains from the input and can be installed with a variable speed drive to enable clients to customize the input speed.

The product traverse in the product specific wire mesh, resulting in the separation of thick and thin grains. The machine is specifically designed and best suited for raw, steamed, parboiled, boiled and basmati rice.

Application: Brown rice and rice.

ADVANTAGES

- A specially designed cylindrical screen ensures accuracy of separation
- An integrated cleaning brush counter rotates with the drum to avoid choking of slots
- Customized selection of sieves to suit various application
- Can be fitted with variable speed drive (optional)



TECHNICAL SPECIFICATIONS

MACHINE TYPE	RTGA-1		RTGB-1		RTGC-1	
CAPACITY (TON/HR) ON PADDY	THIN 3	THICK 4	THIN 5	THICK 6	THIN 7	THICK 8~9
MOTOR-HP/KW	0.50/0.37		1.0/0.735		2/1.5	
VOLTAGE (V) FREQUENCY (HZ)	415/50		415/50		415/50	
ASPIRATION	8		8		8	
WEIGHT (KG)	430		620		840	
OVERALL SIZE (MM)	2188 x 870 x 1700		2188 x 870 x 2301		2188 x 870 x 2898	

MACHINE TYPE	RTGA-10		RTGB-10		RTGC-10	
CAPACITY (TON/HR) ON PADDY	THIN 3	THICK 4	THIN 6	THICK 8	THIN 8	THICK 12
MOTOR-HP/KW	0.50 / 0.37		1.0 / 0.735		2.0 / 1.5	
VOLTAGE (V) FREQUENCY (HZ)	415/50		415/50		415/50	
ASPIRATION	8		10		12	
WEIGHT (KG)	450		550		800	
OVERALL SIZE (MM)	2100 x 1000 x 1800		2100 x 1000 x 2190		2100 x 1000 x 2780	

Note : Unless otherwise specified capacity (TON/HOUR) should be considered for paddy only

Rice Whitener

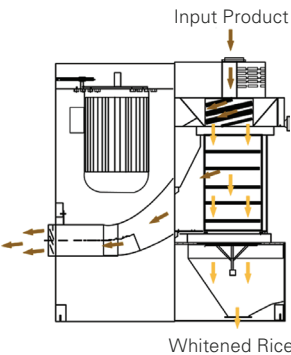
The Rice Whitener incorporates advanced techniques for whitening of brown rice. It uses the vertical abrasive grinding wheel from top to bottom.

The rice is whitened very gently between the two grinding wheels and screen without changing the original shape of rice kernel. A specially designed aspiration system takes away the bran produced during the whitening process. This vertical rice whitening machine is equipped with a mechanism for adjusting the degree of whiteness. The accurate and precise assembly technique ensures minimal broken content.

Application: Brown rice and rice.

Highly efficient for:

- Raw rice
- Steamed rice
- Parboiled rice
- Basmati rice
- Boiled rice



ADVANTAGES

- Whiteners are designed for superior output of whitened rice with less percentage of broken grains
- These machines are available in a wide range of capacities
- Provides uniform whiteness on all the grains
- Mounted with a differential type manometer for accurate control of chamber pressure
- Capable of handling raw, steamed and parboiled rice
- Vertically mounted silicon carbide grinding wheels assures higher head rice yield and reduced broken yield
- Sturdy rigid and heavy duty construction lowers maintenance costs

TECHNICAL SPECIFICATIONS

MACHINE TYPE	RWHA-1		RWHB-1		RWHC-1		RWHD-1	
CAPACITY ON PADDY	MEDIUM 1~1.5	LONG 0.5~1	MEDIUM 2.5~3	LONG 1.5~2	MEDIUM 3.5~4	LONG 2~2.5	MEDIUM 5~6	LONG 3~4
MOTOR HP/KW	15/11.25		25/18.5 30/22.5		40/30		50/37.5	
VOLTAGE (V) FREQUENCY (HZ)	415/50		415/50		415/50		415/50	
ASPIRATION	20		30		40		60	
STATIC PRESSURE MM-WC	150		150		150		150	
WEIGHT (KG)	490		800		1000		1200	
OVERALL SIZE (MM)	1252 x 600 x 1450		1537 x 620 x 1493		1700 x 690 x 1989		1695 x 800 x 1837	

MACHINE TYPE	RWHE-1		RWHF-1		RWHX-1	
CAPACITY ON PADDY	8		12~15		6	
MOTOR HP/KW	75/60		100/75		50/37.5	
VOLTAGE (V) FREQUENCY (HZ)	415/50		415/50		415/50	
ASPIRATION	80		150		50	
STATIC PRESSURE MM-WC	150		150		150	
WEIGHT (KG)	2050		2750		900	
OVERALL SIZE (MM)	2142 x 940 x 2431		1900 x 1000 x 1900		1695 x 800 x 1737	

Note: Unless otherwise specified capacity (TON/HOUR) should be considered for paddy only

Hi-Tech Rice Whitener

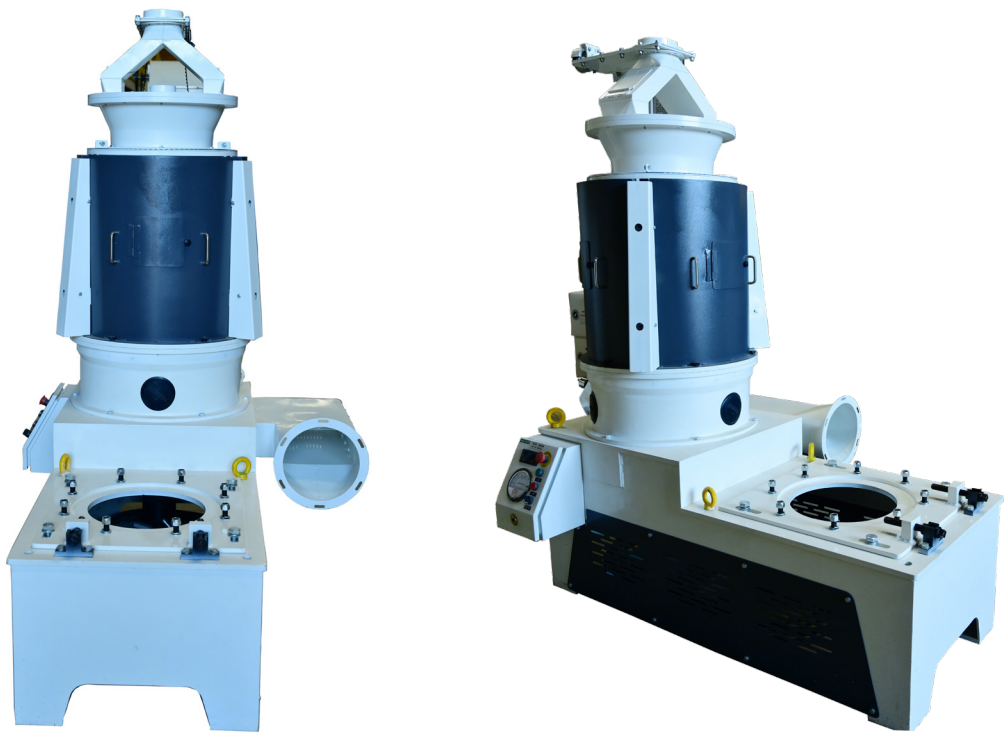
The brand-new PRIME SERIES Hi-Tech Rice Whitener machines have been developed to ensure the optimized performance to reduce process loss. These models are user-friendly in operation and installation. The concept of this machine is designed with our many years of experience in rice milling. These unique designs are versatile for all varieties of paddy processing.

The brown rice enters through an inlet and a feed screw distributes the rice evenly from its spiral threads into a polishing chamber. A set of conical shaped abrasive wheels and metal screens are positioned vertically in such a way that the bran is removed with little friction between the abrasive wheel and metal screen. There is a set of brakes between the screen to change the rice grain rotation. Grain gets polished while passing from top to bottom. The rice grains get polished, and the outer layer bran is gently removed. Due to its uniqueness in the abrasive wheels' shape and position, the rice and tip breakage is very minimal, helping to enhance the final yield. A common hand wheel is provided to adjust the parallel gap between grinding wheels and brake all at once.

When the diameter of the abrasive wheels' wears-out beyond the limit, the entire grinding wheel assembly can be lifted-up to maintain the gap between screen and grinding. This will enhance the utilization of the wheels for optimum level.

ADVANTAGES

- Higher Yield
- Enhanced Milling Degree
- Optimum Utilization of Grinding Wheel
- Enhanced Sieves Life
- Lesser Tip Breakage
- One Point Brakes Adjustment
- Easy Maintenance



TECHNICAL SPECIFICATIONS

MACHINE TYPE	CAPACITY (TON/HR) ON PADDY	POWER REQUIRED (HP)	VOLTAGE (V) FREQUENCY (HZ)	ASPIRATION (CMM)	STATIC PRESSURE MM-WC	WEIGHT (KG)	OVERALL SIZE (LXBXH IN MM)
RICA-10	4-6	40 / 50 / 60	415/50	40 - 60	150	1210	1720 x 930 x 2075
RICB-10	8-12	60 / 75	415/50	80 - 120	150	1975	2100 x 1000 x 2670

Note: Unless otherwise specified capacity (TON/HOUR) should be considered for paddy only

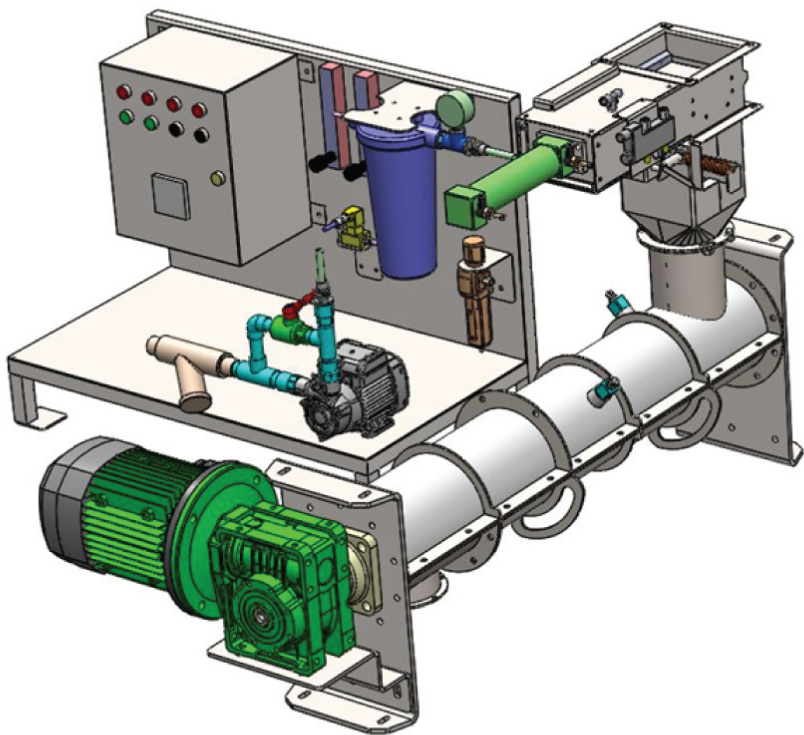
Polish Humidifier

The Water Jet Polisher Humidifier machines has been developed to assure the best possible performance combined with a user-friendly operation and installation. These unique designs are versatile concept for all variety of paddy processing.

Working Concept: When unpolished rice is delivered into the inlet of machine, the rice and water get mixed to pre-conditioned. The product then falls into the humidifier, the water nozzles will spray the required water, then the beater shaft assembly will mix thoroughly the rice and water.

ADVANTAGES

- Higher Yield
- Controlled Automation system
- Enhanced machine performance
- Easy Maintenance



TECHNICAL SPECIFICATIONS

MACHINE TYPE	APHA - 1
CAPACITY (TON/HR) ON PADDY	4-8
MOTOR POWER REQUIRED (HP/KW)	3.0 / 2.2
WATER PUMP POWER REQUIRED (HP/KW)	0.5 / 0.37
VOLTAGE (V) FREQUENCY (HZ)	415 / 50
CONTROL PANEL VOLTAGE (V)	220
AIR PRESSURE (BAR)	5
MACHINE WEIGHT (KG)	100
OVERALL MACHINES (L X W X H) IN MM	1300 x 600 x 780
CONTROL PANEL STAND WEIGHT (KG)	50
OVERALL PANEL STAND WEIGHT	500 x 850 x 660

Note: Unless otherwise specified capacity (ton/batch) should be considered for paddy only

Silky Polisher

AGI Water Jet (Silky) Polisher is used for polishing the rice surface. By spraying water through the mixing chamber creates friction through the rice grains with the use of milling rollers. The weight-controlled outlet of the polisher controls the retaining time of kernels inside the milling chamber. The Water Jet (Silky) Polisher produces rice grains with a shiny surface finish.

Application: Only rice.

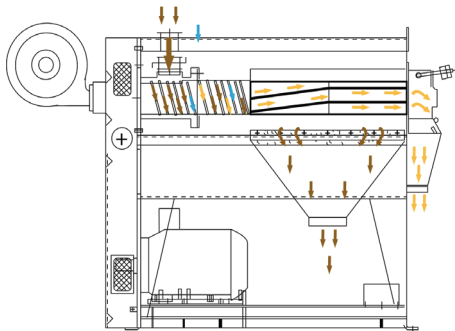
Highly efficient for:

- Raw rice
- Steamed rice
- Parboiled rice
- Basmati rice
- Boiled rice



ADVANTAGES

- PLC controlled automation system
- Water and air mist nozzle at shaft
- Integrated humidifier system with completely enclosed sieve frames with long rod
- Motor placed outside the machine for easy maintenance
- Reduced machine height for sturdy operation



TECHNICAL SPECIFICATIONS

MACHINE TYPE	RWPA-1	RWPB-1	RWPC-1		RWPC-10		RWPD-10		RWPF-10	
CAPACITY TON/HR ON PADDY	2	2	MEDIUM GRAIN 6	LONG GRAIN 4	MEDIUM GRAIN 6	LONG GRAIN 4	MEDIUM GRAIN 8	LONG GRAIN 6	MEDIUM GRAIN 10	LONG GRAIN 8
MOTOR HP/ KW	25/18.75	30/22	50/37.5		75/56		100/75		120/90	
VOLTAGE (V) FREQUENCY (HZ)	415/50	415/50	415/50		415/50		415/50		415/50	
ASPIRATION	30	30	50		60		80		100	
STATIC PRESSURE MM-WC	150	150	150		150		150		150	
WEIGHT (KG)	430	350	650		950		1050		1950	
OVERALL SIZE (MM)	2350 x 800 x 2402	1509 x 702 x 1360	2094 x 1675 x 700		2910 x 1410 x 1745		2910 x 1410 x 1745		2300 x 800 x 2100	

Note: Unless otherwise specified capacity (TON/HOUR) should be considered for paddy only

Rotary Sifter

AGI offers a high capacity Rotary Shifter which can segregate input rice into different categories. This machine is specifically designed and is best suited for rice.

Application: Only rice.



ADVANTAGES

- Wedge clamping mechanism for better sieve frame clamping and leak prevention which enhances performance
- 117 RPM, with 2 stage RPM reduction
- Rugged design
- Wooden sieve frame
- Precision rotary mechanism for longer life and smooth running

TECHNICAL SPECIFICATIONS

MACHINE TYPE	RSIA-2	RSIC 2
CAPACITY (TON/HR) ON PADDY	4	6
MOTOR-HP/KW	1.5/1.125	2/1.5
VOLTAGE (V) FREQUENCY (HZ)	415/50	415/50
NO. OF SIEVES	5	5
WEIGHT (KG)	800	1100
OVERALL SIZE (MM)	1670 x 1370 x 1500	1550 x 1780 x 1600

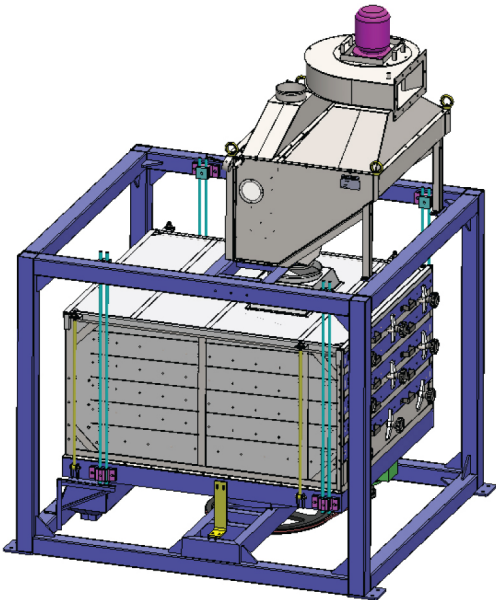
Note: Unless otherwise specified capacity (TON/HOUR) should be considered for paddy only

Gyro Sifter

TECHNICAL SPECIFICATIONS

MACHINE TYPE	RGSA-1
CAPACITY	4.5 TPH ON PADDY
ASPIRATION BLOWER DETAILS	1.5 HP / 3000 RPM
MACHINE MOTOR DETAIL	2 HP / 960 RPM
DRIVE MECHANISM	ECCENTRIC CAM
OVERALL DIMENSION (LxWxH)	2012 x 1760 x 2840
WEIGHT OF THE MACHINE	850 KGS

Note: Unless otherwise specified capacity (ton/batch) should be considered for paddy only

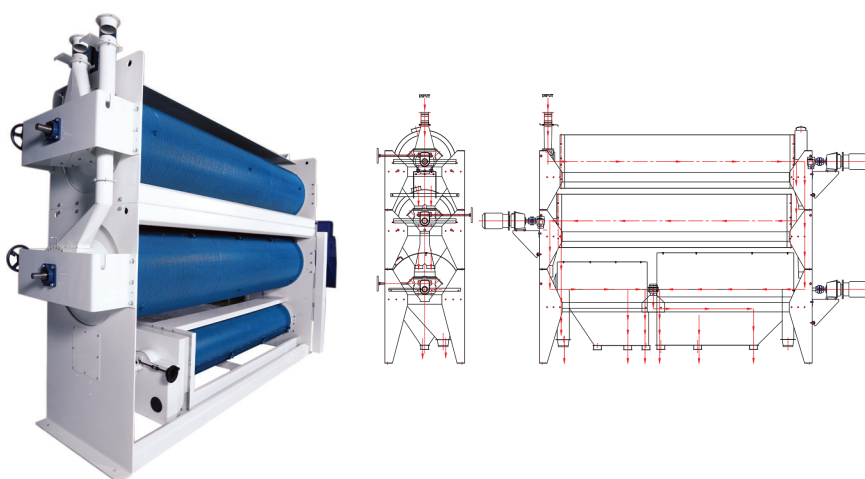


Length Grader

AGI MILLTEC Length Grader is widely used for the separation of broken rice from full rice and long rice. The machine is specifically designed to suit basmati, raw, steamed, parboiled, and boiled rice. Our length graders enable our customers to separate broken grains from whole grains by passing them through rotating indented cylinders. The equipment is installed with an built-in self-cleaning mechanism to ensure optimum productivity.

Specially designed indents make sure there is no rice among the separated broken. The full-grain length remains at the bottom of the cylinder and travels to a separate discharge outlet.

Application: Only rice (medium size).



ADVANTAGES

- Tear-drop shaped indents for higher accuracy of separation
- Modular construction of cylinders, one above the other to save space
- Easy maintenance and minimum operating cost
- Built in self-cleaning mechanism to ensure optimum separation
- The machine is equipped with sampling ports at the outlets to monitor the degree of separation
- Percentage of broken separation is adjustable
- Rigid fabricated body for smooth operation

TECHNICAL SPECIFICATIONS

MACHINE TYPE	RLGA-1	RLGB-2/2	RLGC-1/3	RLGE-3/2	RLGF-2/3	RLGZ-1
CAPACITY ON PADDY	4	8	4	12	8	1.5
MOTOR HP/KW	2/1.5, 1No	2/1.5, 2Nos	2/1.5, 2Nos	2/1.5, 3Nos	2/1.5, 3Nos	1/0.75, 1Nos
VOLTAGE (V) FREQUENCY (HZ)	415/50	415/50	415/50	415/50	415/50	415/50
NO. SIEVE DRUMS	1	2	2	3	3	1
WEIGHT (KG)	650	1200	1200	1800	1800	520
OVERALL SIZE (MM)	4369 x 1070 x 1380	4331 x 1154 x 2112	5081 x 1154 x 2112	4331 x 1154 x 2916	5081 x 1154 x 2916	3380 x 665 x 820

MACHINE TYPE	RLGA-10-1/3	RLGA-10-2/3
CAPACITY (TON/HR) ON PADDY	4	8
POWER REQUIRED (HP/KW)	3 / 2.2	5 / 3.7
PRIMARY SIEVE DRUM DIA	700	700
SECONDARY SIEVE DRUM DIA	434	434
DRIVE MECHANISM	CHAIN DRIVE	CHAIN DRIVE
WEIGHT (KG)	1050	1750
OVERALL SIZE (LxWxH)	4305 x 1195 x 1820	4305 x 1195 x 2700

Note: Unless otherwise specified capacity (ton/batch) should be considered for paddy only

Mega Series Color Sorter

The Mega Series Color Sorter is the best-in-class entry level model with high-end features, improved performance a reliable technology. This color sorter has a never before final rejection ratio of 1:50 for an entry level model.

Multi-Chrome Cameras

- Multichromatic 16200-pixel high speed nano HD cameras with excellent scanning rate.
- Double vision scanning system to detect the slightest difference up to 0.0004mm².
- Spectral confocal 2.0 low distortion HD lens and light ultra-clear colour sensor.
- Equipped with reverse sorting & size sorting methodology.

Chutes

- Anodized chutes having smooth surface to facilitate the even flow of the material.
- Heating provision for chutes to avoid choking of material.

Maglev Ejectors

- Maglev technology ejectors 3.0 with fast response time of 0.8 milliseconds, 3.8 mm nozzle and lifetime of 10 billion Cycles.
- Upgraded with quality ejector feedback system that can monitor the ejections.

Graphics Panel

- 15" Linux based user-friendly graphic user interface (GUI) with Online Support System.

- Image capturing systems with 200 profiles storage that enables quick machine settings.

Technology

- 7th Generation FPGA Processing with auto intelligent digital image sorting technology.
- Product scanning speed of 35000 lines/sec.
- Sniper technology and target location system for removal of pinpoint and better carry over ratio.
- Auto calibration feature with auto setting & auto sorting control.
- High brightness adjustable cool LED lighting systems with life span of 120,000 Hrs.
- Self -diagnosis and memorization of different scanned products.
- PLC centralized control system.
- PID inlet feeder control system.
- Intelligent dust removal system.

ADVANTAGES

- Slow motion Camera for better Image Capturing
- Full spectrum lighting for enhanced detection of light yellow & pinpoints.
- Sniper system for precise ejection.
- Size & shape sorting.
- Spectral confocal 2.0 lens technology for detection of glass & desiccants.
- PID inlet feeder control system for uniform flow & balanced ejection.
- Fast response Maglev ejectors with minimal wear & lifetime of 10 billion cycles.
- PLC centralised control system



TECHNICAL SPECIFICATIONS

MACHINE MODEL	MEGA 240	*MEGA 300	MEGA 360	*MEGA 420	MEGA 480	MEGA 600
NO. OF CHUTES	4	5	6	7	8	10
CHANNEL RE RE SORT	120+60+60	180+60+60	180+120+60	240+120+60	300+120+60	360+180+60
CHANNEL RE RE RE SORT	/	/	180+60+60+60	/	240+120+60+60	300+180+60+60
MICRON HD CAMERA	8	10	12	14	16	20
UPS REQUIREMENT	3 KVA	5 KVA	5 KVA	6 KVA	6 KVA	8 KVA
AIR COMPRESSOR	20 HP 110 CFM	25 HP 120 CFM	30 HP 130 CFM	40 HP 170 CFM	40 HP 200 CFM	50 HP 230 CFM
INDICATIVE Q/P CAPACITY (RICE) @ 5% DARK	3-4 TPH	4-5 TPH	4.5-5.5 TPH	5.5-6.5 TPH	6.5-7.5 TPH	7.5-8.5 TPH
FINAL REJECTION (GOOD:BAD)	1 : 50	1 : 50	1 : 50	1 : 50	1 : 50	1 : 50
MACHINE DIMENSIONS IN MM (LxWxH)	1891x1564x2020	2533x1564x2020		2991x1564x2020		3583x1564x2020

*MEGA 300 is same frame as MEGA 360 / *MEGA 420 is same frame as MEGA 480 / *Capacity is Indicative and may vary w.r.t to Grain, Quality & Density

Zigma Series Color Sorter

The Zigma Series Color Sorter provides ultra-premium color sorting solutions with reverse and size sorting features. As a high-end sorter, it has higher capacities for productivity improvement and a rejection ratio of 1:70 @ 5% dark contamination.

Multi-Chrome Cameras

- Multichromatic 16200-pixel high speed nano HD and confocal slow-motion cameras with excellent scanning rate.
- Double vision scanning system to detect the slightest difference up to 0.0004 mm.
- Spectrum confocal 3.0 low distortion HD lens and light ultra-clear colour sensor.
- Equipped with reverse sorting & size sorting shape sorting.

Chutes

- Anodized chutes having smooth surface to facilitate the even flow of the material.
- Heating provision for chutes to avoid choking of material.

Maglev Ejectors

- Maglev technology ejectors 3.0 with fast response time of 0.8 milliseconds, 3.8 mm nozzle and lifetime of 13 billion Cycles.
- Upgraded with quality ejector feedback system that can monitor the ejections.

Graphics Panel

- 15" Linux based user-friendly graphic user interface (GUI) with Online Support System.

- Image capturing systems with 200 pro les storage that enables quick machine settings.

Technology

- 7th Generation FPGA Processing with auto intelligent digital image sorting technology.
- Product scanning speed of 35000 lines/sec.
- Sniper technology 3.0 and target location system for removal of pinpoint and better carry over ratio.
- Auto calibration feature with auto setting & auto sorting control.
- High brightness adjustable cool LED lighting systems with life span of 120,000 Hrs.
- Self –diagnosis and memorization of different scanned products.
- PLC centralized control system.
- PID system for even control of feeder material.
- Intelligent dust removal system.
- Standard top dust collection system.
- Meyer care service- Real time online support and monitor.
- Standard vibrator cover with LED indicator.

ADVANTAGES

- 16200 Pixels nano HD RGB cameras and confocal slow-motion cameras.
- Fast response maglev ejectors with 13 billion life cycles.
- Reverse & size sorting.
- Optional 4-time sorting for better carry-over ratio.
- Sniper technology 3.0 and target located rejection for better carry-over ratio.
- Spectrum confocal 3.0 for rejecting foreign materials.
- Higher capacity- strong software algorithm to analyse the sorting materials.
- Simplified UI system with more user-friendly HMI.
- Intelligent dust removal system and standard top dust collection system.



TECHNICAL SPECIFICATIONS

MACHINE MODEL	ZIGMA 240	ZIGMA 360	ZIGMA 480	ZIGMA 600	ZIGMA 780
NO. OF CHUTES	4	6	8	10	13
CHANNEL RE RE SORT	120+60+60	180+120+60	300+120+60	360+180+60	480+180+120
CHANNEL RE RE RE SORT	/	180+60+60+60	240+120+60+60	300+180+60+60	420+180+120+60
RGB & SLOW-MOTION CAMERAS	4 + 4	6 + 6	8 + 8	10 + 10	13 + 13
TOTAL CAMERAS IN MACHINE	8	12	16	20	26
UPS REQUIREMENT	3 KVA	5 KVA	6 KVA	8 KVA	10 KVA
AIR COMPRESSOR	20 HP 110 CFM	30 HP 130 CFM	40 HP 200 CFM	50 HP 230 CFM	60 HP 250 CFM
INDICATIVE Q/P CAPACITY (RICE) @ 5% DARK	3-4 TPH	4.5-5.5 TPH	6.5-7.5 TPH	7.5-8.5 TPH	10-11 TPH
FINAL REJECTION (GOOD:BAD)	1 : 70	1 : 70	1 : 70	1 : 70	1 : 70
MACHINE DIMENSIONS IN MM (LxWxH)	1891x1564x2020	2533x1564x2020	2991x1564x2020	3583x1564x2020	4445x1620x2020

*Capacity is Indicative and may vary W.R.T to grain quality & Density

IOTA Plus Color Sorter

The IOTA Plus Color Sorter is specially designed for the exports segment with Sniper Technology 3.0. It features a new, intelligent top dust suction system for enhanced performance and an auto intelligent sorter with a remote service app. This color sorter has flexible re-sort settings with the option for 4 or more passes.

Multi-Chrome Cameras

- Multichromatic 16200-pixel high speed Nano HD and confocal slow-motion cameras with excellent scanning rate.
- NIR and InGaAs infrared camera to identify the foreign materials.
- Double vision scanning system to detect the slightest difference up to 0.01 mm.
- Spectrum confocal 3.0 low distortion HD lens and light ultra-clear colour sensor.
- Equipped with reverse sorting and size sorting methodology.

Chutes

- Anodized chutes having smooth surface to facilitate the even flow of the material.
- Heating provision for chutes to avoid choking of material.

Maglev Ejectors

- Maglev technology ejectors 3.0 with fast response time of 0.8 milliseconds, 3.8 mm nozzle and lifetime of 13 billion cycles.
- Upgraded with quality ejector feedback system that can monitor the ejections.

Graphics Panel

- 15" Linux based user-friendly graphic user interface (GUI) with Online Support System.
- Image capturing systems with 200

profiles storage that enables quick machine settings.

Technology

- 7th Generation FPGA Processing with auto intelligent digital image sorting technology.
- Product scanning speed of 35000 lines/sec.
- Sniper technology 3.0 and target location system for removal of pinpoint and better carry over ratio.
- Auto calibration feature with auto setting and auto sorting control.
- High brightness adjustable cool LED lighting systems with life span of 120,000 Hrs.
- Self-diagnosis and memorization of different scanned products.
- PLC centralized control system.
- PID system for even control of feeder material.
- Intelligent dust removal system.
- Standard top dust collection system
- Meyer care service – Real time online support and monitor.
- Standard vibrator cover with LED indicator.

ADVANTAGES

- 16200 Pixels Nano HD RGB cameras and confocal slow-motion cameras.
- NIR and InGaAs infrared camera to identify the foreign materials.
- Fast response maglev ejectors with 13 billion life cycles.
- Reverse and size sorting.
- Optional 4-time sorting for better carry-over ratio.
- Sniper technology 3.0 and target located rejection for better carry-over ratio.
- Spectrum confocal 3.0 low distortion HD lens and light ultra-clear colour sensor.
- Higher capacity- strong software algorithm to analyse the sorting materials.
- Simplified UI system with more user-friendly HMI.
- Intelligent dust removal system and standard top dust collection system.
- Specially designed for exporters for food safety.



FINAL REJECTION (GOOD:BAD)

TECHNICAL SPECIFICATIONS

MACHINE MODEL	IOTA PLUS 360	IOTA PLUS 480	IOTA PLUS 600
NO. OF CHUTES	6	8	10
CHANNEL RE RE SORT	180+120+60	300+120+60	360+180+60
CHANNEL RE RE RE SORT	180+60+60+60	240+120+60+60	300+180+60+60
RGB & SLOW-MOTION CAMERAS	12	16	20
NIR CAMERAS/InGaAs CAMERAS	6 + 6	8 + 8	10 + 10
TOTAL CAMERAS IN MACHINE	24	32	40
UPS REQUIREMENT	5 KVA	6 KVA	8 KVA
AIR COMPRESSOR	30HP 130CFM	40HP 200CFM	50HP 230CFM
INDICATIVE Q/P CAPACITY (RICE) @ 5% DARK	4.5-5.5 TPH	6.5-7.5 TPH	7.5-8.5 TPH
FINAL REJECTION (GOOD:BAD)	1 : 100	1 : 100	1 : 100
MACHINE DIMENSIONS IN MM (LxWxH)	2533x1564x2020	2991x1564x2020	3593x1564x2020

*Capacity is Indicative and may vary W.R.T to grain quality & Density

Grain Blender with Ribbon Mixer and Filling

AGI Milltec introduces the brand-new PRIME Series Blending Machine with ribbon mixer and filling. This machine has been developed to achieve the best possible performance combined with a userfriendly operation and installation. We have applied our many years of grain processing experience to design a unique machine that is versatile to handle all varieties of finished and semi-finished products.

The PRIME Series Blending Machine is a mechatronics type of machine. The performance is controlled and measured by the combination of mechanical, pneumatic & PLC system.

The HMI display is used to set the required blending percentage and mixing time. Controller automatically set the machine for desired blending value & accordingly weighing bin measure the product with the help of load cell. If set value is achieved, the weighing bin opens and the product is discharged into the ribbon mixer. Our efficient ribbon mixer mixes the product to achieve complete homogeneity. Once mixing is complete, the bagging attachment allows the user to bag the product at specific required weights.



PRODUCT FEATURES:

- Blending, mixing and bagging included in a single machine
- Eliminates need for multiple elevators and packing machines
- PLC controlled automation system (programmable logic controller)
- Product mixing % can be controlled as per requirement
- Data can be stored in pen drive
- Simple calibration process
- Color touch screen HMI (Human Machine Interface)
- Product delivered with calibration certificate from NABL approved labs

TECHNICAL SPECIFICATIONS

MACHINE TYPE	GBRA-10/3			
	WEIGHT IN KG	BAGS/MIN	TPH	ACCURACY
CAPACITY ON RICE WITH 1% MIXING	25	4 MAX.	6	±20 gm
	50	4 MAX.	12	±20 gm
CAPACITY ON RICE FOR BAGGING	25	5 MAX.	7.5	±20 gm
	50	4 MAX.	12	±20 gm
VOLTAGE IN FREQUENCY IN Hz	415 / 50			
AIR PRESSURE REQUIRED IN BAR	05 to 06			
AIR CONSUMPTION IN M³/HR	2.5			
WEIGHT (KG)	200			
BLENDER OVERALL SIZE (MM)	1110 x 1100 x 1150			
MIXER OVERALL SIZE	1110 x 1100 x 1150			

*This machine can mix three different product (3 inlest)

TECHNICAL SPECIFICATIONS

MACHINE TYPE

GBRA-10/4

	WEIGHT IN KG	BAGS/MIN	TPH	ACCURACY
CAPACITY ON RICE WITH 1% MIXING	25	4 MAX.	6	±20 gm
	50	4 MAX.	12	±20 gm
CAPACITY ON RICE FOR BAGGING	5	7 MAX.	2.1	±10 gm
	10	6 MAX.	3.6	±10 gm
	25	5 MAX.	7.5	±20 gm
	50	4 MAX.	12	±20 gm
VOLTAGE IN FREQUENCY IN Hz	415 / 50			
AIR PRESSURE REQUIRED IN BAR	05 to 06			
AIR CONSUMPTION IN M³/HR	2.5			
WEIGHT (KG)	475			
OVERALL SIZE (MM)	1010 x 1500 x 2700			

*This machine can mix three different product (2 inlest)

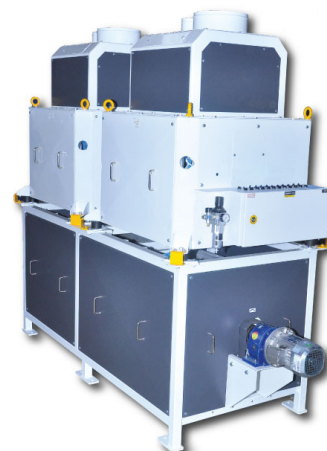
TECHNICAL SPECIFICATIONS

MACHINE TYPE

GBRD-10/4

	WEIGHT IN KG	BAGS/MIN	TPH	ACCURACY
CAPACITY ON RICE WITH 1% MIXING	25	8 MAX.	12	±20 gm
	50	8 MAX.	24	±20 gm
CAPACITY ON RICE FOR BAGGING	5	14 MAX.	4.2	±10 gm
	10	12 MAX.	7.2	±10 gm
	25	10 MAX.	15	±20 gm
	50	8 MAX.	24	±20 gm
VOLTAGE IN FREQUENCY IN Hz	415 / 50			
AIR PRESSURE REQUIRED IN BAR	05 to 06			
AIR CONSUMPTION IN M³/HR	5			
WEIGHT (KG)	800			
OVERALL SIZE (MM)	1110 x 2600 x 3065			

*This machine can mix three different product (2 inlest)



Packing/Grain Filling Machine

AGI packaging equipment, pack grains into bags with capacities ranging from 5 kg to 75 kg. Our Packing Machines are equipped with several features such as weighing and discharge bins, and a control system to facilitate smooth packing of grains. The Grain Filling Machines are available in two models with single and double dosing options.

Application: Rice, pulses.

*Capacity will vary with bulk density and moisture



ADVANTAGES

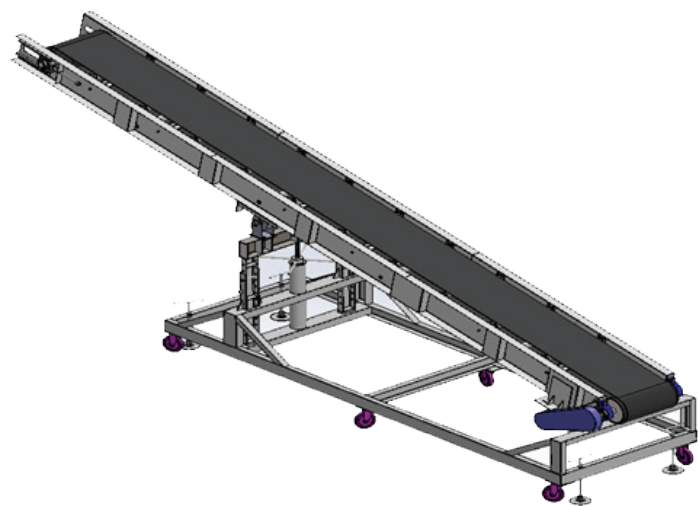
- PLC and pneumatic based control system
- Color touch pad screen for display or entry
- SS material for weighing bin discharge and material feeder
- Jaws movement bag holder setup

TECHNICAL SPECIFICATIONS

MACHINE TYPE		RGFA-10			RGFB-10		
	WEIGHT IN KG	BAGS/MIN	ACCURACY	WEIGHT IN KG	BAGS/MIN	ACCURACY	
CAPACITY (TON/HR) ON RICE	5	11 to 12	±10 gm	5	18 to 20	±10 gm	
	10	10 to 11	±10 gm	10	16 to 17	±10 gm	
	25	9 to 10	±15 gm	25	14 to 15	±15 gm	
	50	6 to 7	±20 gm	50	11 to 12	±20 gm	
VOLTAGE (V) FREQUENCY (HZ)	415V/50Hz			415V/50Hz			
AIR PRESSURE REQUIRED	5 to 6 Bar			5 to 6 Bar			
AIR CONSUMPTION IN M ³ /HR	4.3			8.2			
WEIGHT (KG)	200			350			
OVERALL SIZE (MM)	1110 x 815 x 1760			1910 x 900 x 1850			

Note: Unless otherwise specified capacity (TON/HOUR) should be considered for rice only

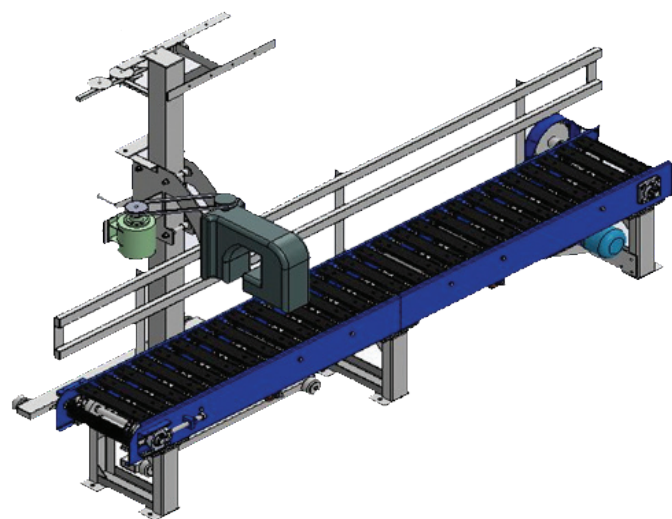
Bag Loader



SPECIAL FEATURE

- Brake system for holding in required positions
- Screw type manual lifting mechanism
- Belt tension adjustment
- Easy maintenance
- Locking facility available for required height

Slat Conveyor



SPECIAL FEATURE

- Sieving head adjustment as required
- Chain tension adjustment

BAG LOADER TECHNICAL SPECIFICATIONS

MACHINE PARAMETERS	MODEL - ABLA 1
CONVEYOR TYPE	Belt
GEARED MOTOR	2HP 38RPM
BELT SPEED	0.35 Mtr/Sec
CONVEYOR LENGTH	6 meters
BELT WIDTH	450mm
MIN. HEIGHT	6 Feet
MAX. HEIGHT	10 Feet
HEIGHT ADJUSTMENT MECHANISM	Screw Jack/Hydraulic
OVERALL SIZE (MM)	6200 x 1500 x 2300
WEIGHT OF THE CONVEYOR	550 Kgs

SLAT CONVEYOR TECHNICAL SPECIFICATIONS

MACHINE TYPE	ASCA-1	ASCB-1
CONVEYOR TYPE	Slat	Slat
MOTOR FOR CONVEYOR	1 HP, 54 RPM	1 HP, 37 RPM
MOTOR SEWING HEAD	0.5HP, 1440	0.5HP, 1440
CONEYOR SPEED	0.35 Mtr/Sec	0.32 Mtr/Sec
CONVEYOR LENGTH	3 Meters	4 Meters
CONVEYOR WIDTH	350 mm	435 mm
CONVEYING BAGS CAPACITY	10 to 100 Kgs	10 to 100 Kgs
HEIGHT ADJUSTABLE	No	Yes
OVERALL SIZE (MM)	3020 x 610 x 1000	4000 x 825 x 1000
WEIGHT OF THE CONVEYOR	350 Kgs	~430 Kgs

Bucket Elevator (Grain Discharger)

AGI Bucket Elevators operate at maintained surface speed to achieve higher efficiency with negligible rejections. The drive rollers are rubber vulcanized to avoid belt slippage while running. Our elevators are fitted with food grade shovel buckets. Belts are made of food grade rubber with heat and oil resistant surface. Elevators works by both scooping and lifting based on project layout.

Inlet and outlets are fitted with wear resistance plates and are also fitted with a back stopper mechanism at the assembly head.

TECHNICAL SPECIFICATIONS

MACHINE TYPE	AGDB	AGDC	AGDD	AGDE	AGDF	AGDZ	AGDY	AGDX
CAPACITY ON PADDY TPH	5	8	12	20	25	5	8	12
CAPACITY ON RICE TPH	6	10	16	25	32	6	10	16
GEAR MOTOR POWER: HP	1	1.5	2	3	4	1	1.5	2
BELT WIDTH IN MM	125	150	200	250	300	125	150	200
DRUM DIAMETER IN MM	300	360	500	550	600	300	360	500

Note: The given geared motors HP is applicable up to 40 feet height.



Accessories



Magnet



Cyclone / Recovery Unit



Bran Discharger with Geared Motor

Gravity Table

Application: Wheat, beans, seeds and coarse spices.



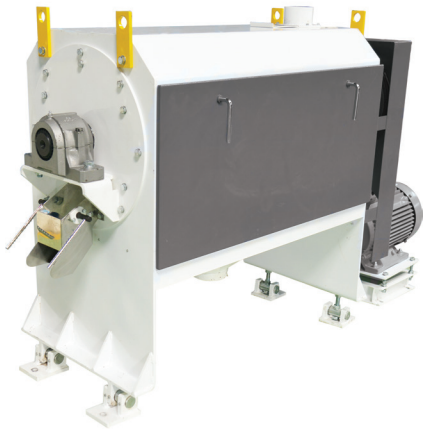
TECHNICAL SPECIFICATIONS

MACHINE TYPE	RGTZ-2	RGTB-2
CAPACITY ON WHEAT (TPH THROUGH-PUT)	2 ~ 3	4 ~ 5
DECK DIMENSIONS (L X W) (MM)	2200 x 1050	2960 x 1200
SIEVE AREA (SQ.M.)	2.3	3.55
DECK MESH TYPE	10 / 16 / 30	10 / 16 / 30
DECK GEAR MOTOR (HP)	1.5	2
BLOWER MOTOR (HP)	10	12.5
OVERALL DIMENSIONS (L X W X H) (MM)	2256 x 1455 x 1680	3356 x 1588 x 1680
APPROX WEIGHT (KGS.)	900	1160

NOTE: Capacity mentioned is indicative and shall vary based on commodity and impurity levels therein

Perler

Application: Pulses and maize



TECHNICAL SPECIFICATIONS

DESCRIPTION	PPEA-1 (PERLER)		PPOA-1 (POLISHER)
CAPACITY ON PEGION PEAS (TPH)	2	4	2
CYLINDER SURFACE AREA (SQ.M.)	0.85		0.95
MACHINE INCLINATION	3 ~ 10 Degree		3~10 Degree
DRIVE MOTOR (HP)	12.5	15	30
ASPIRATION MOTOR (HP)	5		5
ASPIRATION CAPACITY (CMH / MMWC)	2200/300		2200/300
OVERALL DIMENSIONS	1950 x 680 x 1335		2145 x 680 x 1345
APPROX WEIGHT (KGS.)	570		545

Fine Cleaner

Application: Paddy, wheat, pulses, beans, seeds.



TECHNICAL SPECIFICATIONS

MACHINE TYPE	RFCA-1	RFCB-1
CAPACITY ON WHEAT TPH	2~3	4~6
SIEVE BOAT MOTOR-HP/RPM	2/960	0.75/24 (Feed Roller) 2/960
SIEVE DIMENSION L x B (MM)	(3 x 800) x 1000	(3 x 800) x 1000
SIEVE AREA-SQ MTR	5.6	9.6
NO. OF SIEVE LAYER IN EACH BOAT	3	2
NO. OF BOAT	1	2
BLOWER (FAN) MOTOR-HP/RPM	5/3000	7.5/3000
WEIGHT-KG	1600	2000
OVERALL SIZE (MM)	3200 x 1758 x 7800	3117 x 1756 x 3500

NOTE: Capacity mentioned is indicative and shall vary based on commodity and impurity levels therein

Splitter

TECHNICAL SPECIFICATIONS

MACHINE TYPE	DSPA-1
CAPACITY	2 TPH
MOTOR POWER	0.75 KW, 1440 RPM
VOLTAGE (V) FREQUENCY (HZ)	415V / 50 HZ
WEIGHT (KG)	130
OVERALL SIZE (LxWxH)	908 x 520 x 1268
FOUNDATION BOLT	M16 x 100-4Nos



AGI Rice Milling Installations



Rice Milling Plants



Seed Processing Plants



Pulses Processing Plants

Processing Solutions for Pulse Mills



Cleaning, Grading & Sorting Solutions For Seeds & Other Grains



Technical Services & Network

AGI provides end-to-end customized turnkey solutions from planning to commissioning of rice mills. We provide unmatched support through our service and spare parts department, with over 100 experienced and qualified engineers to cater to the needs of all of our customers.

AGI adheres to strict delivery schedules as per our commitment to our clients. We identify and allocate resources, working through man-to-machine synergy to address client issues and provide meaningful and cost-effective solutions.

AGI has a strong network of branch offices that form the hub for our sales and after sales activities.

*Modifications Clause: AGI reserves the right to make any modifications or improvements in our design or specification of the equipment offered due to our continual improvement programs. Subsequently the catalogue versions will be revised accordingly.



AGI is a global leader in supplying farm and commercial customers with the manufacturing, planning, and engineering of full equipment solutions for grain, seed, fertilizer, feed, and food. AGI's expertise enables the storage, blending, mixing, conveying, conditioning, processing, and protection of agricultural products and inputs worldwide.

Your safety is our highest priority.

Please read and understand the operator's manual and safety decals before using. Use and maintain products properly, and do not modify. Keep guards in place when operating and follow all product manuals and safety decals. For all AGI products, if guards, safety decals, or manuals are damaged or missing, contact your AGI sales or dealer representative for replacements. Images and information contained in this brochure are presented for general information.

Milltec®, AGI and the furrows symbol are trademarks belonging to Ag Growth International Inc.

198 Commerce Drive, Winnipeg, Manitoba, Canada R3P 0Z6
P 1.866.467.7207

YouTube X LinkedIn Facebook Instagram @aggrowthintl

AGGROWTH.COM