

MODEL RB

THE ULTIMATE FEED
MILL CONVEYOR



Model RB

The Highest Performance at the Best Value

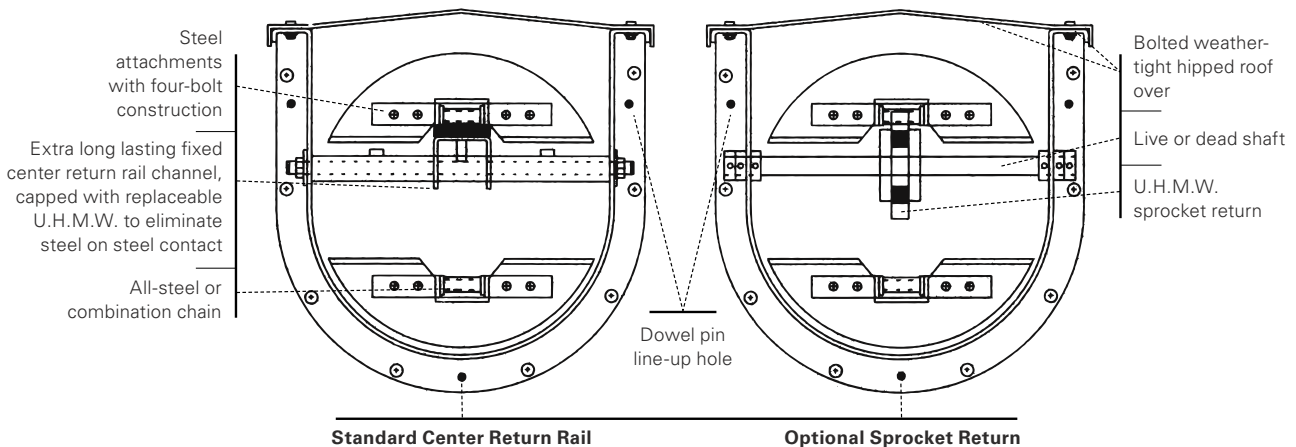
Designed & engineered for versatility.

The AGI Tramco Model RB Conveyor is specifically designed for the handling of soft stock or materials that are easily crumbled or broken, such as seed, feed, pellets and other fragile materials. All components are jig welded to ensure their interchangeability and are checked for precise fit by the strict AGI Tramco 100% inspection policy. The Model RB is built standard with 10-gauge construction. The u-shaped trough is available in widths of 9", 12", 14", 16", 18", 20", 24". Each system is individually designed for your specific application. AGI Tramco offers custom design, components and materials. Our "total quality process" means that you can count on years of quiet, trouble-free performance from your Model RB Conveyor.



CAPACITIES

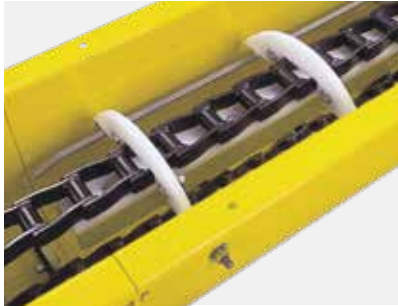
TROUGH SIZE	MAX. CAPACITY @ 25FPM (FT ³ /HR)	MAX. CAPACITY @ 50FPM (FT ³ /HR)	MAX. CAPACITY @ 100FPM (FT ³ /HR)	MAX. CAPACITY @ 125FPM (FT ³ /HR)
9"	425	850	1,700	2,125
12"	800	1,600	3,200	4,000
14"	1,125	2,250	4,500	5,625
16"	1,625	3,250	6,500	8,125
18"	2,050	4,100	8,200	10,250
20"	2,600	5,200	10,400	13,000
24"	3,900	7,800	15,600	19,500



FEATURES



Standard totally bolted construction with grade 5 cadmium plated bolts



Heavy-duty, heat treated chain supported by our standard center return rail



Bypass feed inlet allows feed to flow around return flight and travel directly to bottom run without damage to material



Inspection doors at each feed inlet or per customer's requirements



Take-up on the head with self-cleaning tail



Flame hardened split sprocket for easy replacement



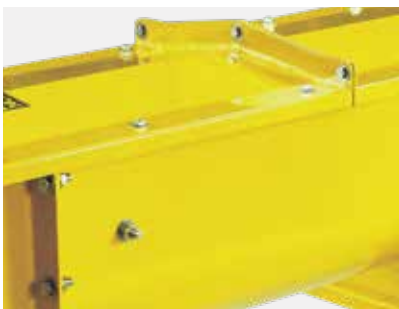
3 mil Powder Coat Finish
U.H.M.W. dust seal



Heavy-duty ball bearings
Four bolt flanged bearing



Standing flange hipped roof cover, fastened with cadmium plated bolts



Trough Cross Sections
Contour shaped U.H.M.W. Polyethylene Flights are standard on all AGI Tramco Model RB Conveyors for self-cleaning and quiet operation including the use standard CEMA sizes for the troughing.



***Note:** Covers have been removed for illustrative purposes only. Do not operate conveyor unless all covers, guards, etc. are in place.



TRAMCO is an AGI Brand.

AGI is a leading provider of equipment solutions for agriculture bulk commodities including seed, fertilizer, grain, and feed systems with a growing platform in providing equipment and solutions for food processing facilities. AGI has manufacturing facilities in Canada, the United States, the United Kingdom, Brazil and Italy and distributes its products globally.

AGI TRAMCO

1020 East 19th Street North, Wichita, Kansas USA 67214
 316.264.4604 | sales@tramcoinc.com | aggrowth.com/tramco

AGGROWTH.COM [aggrowthintl](#)     