

AGI PLANT MANAGER

SYSTEM FEATURES



Product Info

Track inventory with products

- The system records blends that have been ran and will deduct from the current weight of the product based on how much was used
- The system can record manual changes for the weight of the product's ongoing total
- The user can see the inventory changes based on the history of a product, and the user is able to see both the past manual changes and past batch transactions
- Visual view of products inventory
- Auto calculates products
- Import products from the ticket or create products manually

Product Order

- Specifically for plant operator users for either a liquid chemical system, liquid fertilizer system, or a tower/batch dry system

Tracking inventories for non-automated inventory changes.

- Users can manually input incoming inventory

Low product warnings

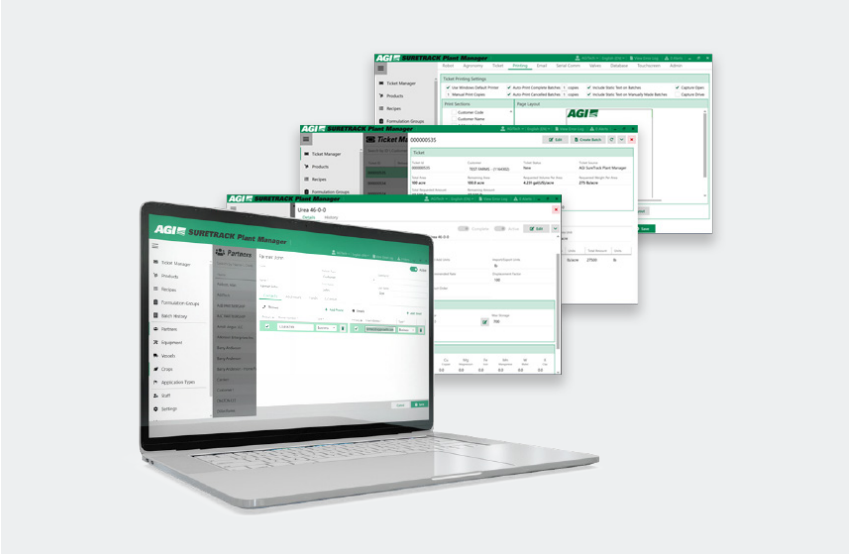
- Setting will forward a warning when the products are low - makes it easier to know when a re-order is required

Product history

- Support both dry and liquid fertilizer
- Bulk deletion of notifications

Product features

- Manufactured products can be built from recipes



Users

Setting partners as staff with permissions

- Permissions can be granted to partners entered as Staff, allowing added functionality and accesses.

Set up for users and roles

- Users can be set up with specific roles and permissions
- Store and update partner/customer information.

Different partner types

- Drivers, Dispensing Locations, Employee, Carriers, Customer
- Each partner can have multiple partner types
- All contact information, pesticide licenses, retail interstate commerce codes, EPA number

Multi system support

- Users can work from one central database across the network for multiple instances of AGI SureTrack Plant Manager

Functions

Allows for recipes

- Used for quick and easy batch entry. Touchscreens can be mounted by load out or control room.

- Automated export of Agronomy tickets
- Re-imports Agronomy tickets that didn't import initially

3 different measurement systems

- Can use multiple measurement systems at the same time

Different language options

- English
- Spanish
- Portuguese (Brazil)

Robot Plug Ins

- The following robot Plugins are currently available: Yargus Declining Weight Version 4.2, AGI Junge Plant Operator Plugin, Yargus Declining Weight version AB, Yargus Declining Weight Version 4.5, Yargus Declining Weight Version 4.3.7, Yargus Declining Weight Version 4.3.9

Plant Manager can handle multiple robot processes

- Integrated with different types of automation systems (Declining Weight and AGI Junge Plant Operator)

- Manages the PLC Queue

Existing customers upgrading to AGI SureTrack Plant Manager can keep their previous data and import to AGI SureTrack Plant Manager

- Both from AGI Yargus and AGI Junge

Legal for trade system

- Supports overhead tanks and truck scales
- Users can pick which overhead tank to use per batch
- Can be used for the following Ricelake indicators 720i, 820i, 880i, 920i, 1280i, and Cardinal 225D over ethernet
- Supports multiple scales
- Supports multiple legal for trade systems
- Mass meter is now an option for Junge users

Setting the information for the valves.

- For the Declining Weight robot plugins: can set the bulk density, link the product to a specific hopper, and the single and dual volume constants.
- For the AGI Junge Valves: set Product Valve Data in the AGI Junge Data Manager

Touchscreen capability

- For Manned and Un-manned facilities

Ability to create formulation groups

- Created with either blend or field analysis

Search Options

- Ticket Manager, Recipes, Formulation Groups, Batch History, Reports, Partners, and Vessels have extensive search options. Crops and Application Types can only search by name only.

Software works with multiple programs

- AGI SureTrack Plant Manager works with plant operator, and plant operator works with remote monitor

Maintenance

Automatic software updates when subscription is valid and up to date

- Reminders are sent (AGI Yargus equipment) only on the Declining Weight robot plug in 4.2 or higher when maintenance is required
- Notifications and alerts on errors or information

Batches

If Autosize is set then when batches are created it will automatically resize batches to be the autosize amount set.

- Resize options include: By Pound (or KGs), By Ton (Metric Ton), By Gallon (Liter), By Area, Equal Batches, Resize to One Batch, Autosize.

Emails or texts batch notifications on completion and cancellation

- Integrates and supports most wireless carriers in North America
- The following individuals can receive SMS messaging: any partner tied to the ticket/batch
- Emails that fail to send from the system due to connection loss will automatically attempt to resend on system start-up

Tickets

Allows for the import of tickets from different agronomies. Can have multiple agronomies on a single setup.

The following agronomies are currently integrated: Accrivia, ADM, Agris, Agris.txt, Agvance REQ, Agvance XML, Agvantage, Agvision, Agvision-IND, AgWorks, AgWorks-Pre, ARS JSON, B.O.S.S., Control Systems, FieldAlytics, Ground Control, Hi-Line AgWorks-Pre, Oakland, Omni, SBU-Agvance, Soil Map, The Fertilizer Program, TKI, Tronia.

Imported and/or created tickets can be divided in to multiple batches

- Tickets and batches can be combined in a single ticket
- Signature and E-signature capability. Ability to automatically sign
- A manual made ticket can be linked to a selected agronomy ticket
- Tickets can be exported in bulk.
- Enforce mandatory ticket information
- Attach ticket information from the HM
- Check in and check out tickets for vessels, and create printout on check out.
- Series of tickets can easily be created from manually created tickets.

Combine the ticket and Batch ID for ticket names

- Batch names can be customized.

Reporting

Numerous reporting features available

- Customer Product Usage Report, Daily Product Report, Vessel Report
- Product History, Batch History, and Customer Product Usage Report can be exported
- Batch history list

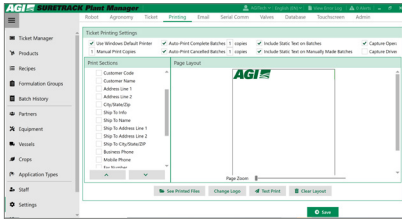
Vessel Tracking

- Using the Vessel report will generate a table based on the filters selected. The table that is created can be exported to a .csv file.

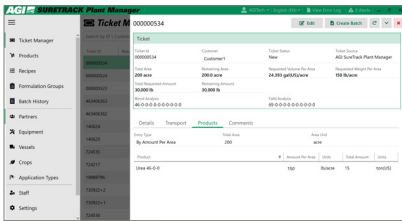
Printing

Print system is flexible and modular

- System set up to print to multiple printers
- Check in and check out tickets
- Archives printed tickets and signatures
- Customizable print template
- Additional Junge print fields
- Specify templates by agronomy or manual
- Like products can be combined on the printout



Print screen



Ticket screen



AGI is a leading provider of equipment solutions for agriculture bulk commodities including seed, fertilizer, grain, and feed systems with a growing platform in providing equipment and solutions for food processing facilities. AGI has manufacturing facilities in Canada, the United States, the United Kingdom, Brazil, India and Italy and distributes its products globally.



198 Commerce Drive, Winnipeg, Manitoba, Canada R3P 0Z6
P 217.826.6352 | **F** 217.826.8551 | fertilizersystems@aggrowth.com | aggrowth.com/fertilizer