

**YOUR OPERATION'S SUCCESS
IS IN YOUR HANDS.
INTRODUCING COMPASS™**

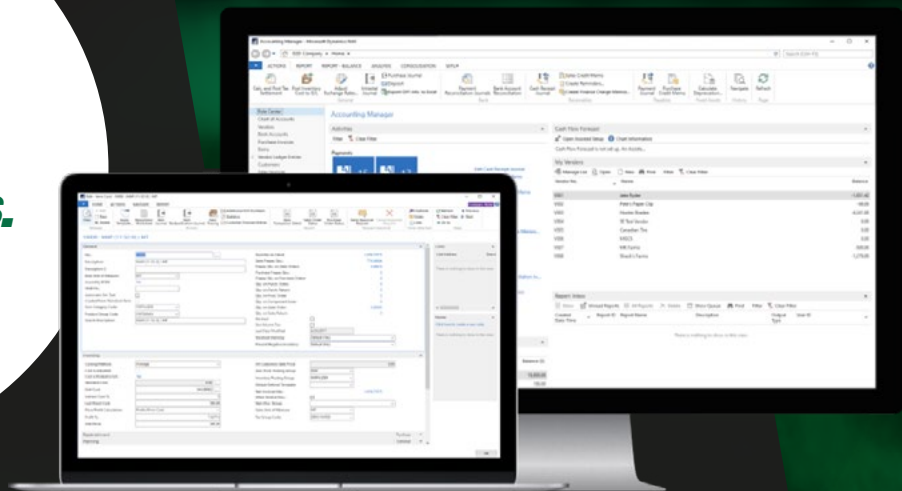
Equipment Dealers and
Ag Retailers have many
factors to manage today.

Management Factors

Dealer Business
data management
is an essential part
of any successful
Dealer

RECORD KEEPING
INVENTORY
ROI/BREAKEVEN
FORECASTING
MANAGING MULTIPLE OEM'S
PAYROLL
CASHFLOW
TAXES
ACCOUNTING
PROFITABILITY SCENARIOS

**THAT'S WHY
WE CREATED
AGI COMPASS.**



AGI COMPASS is a full-scale software system (ERP) specifically designed for Agricultural Retail and Equipment Dealers. It is time-tested and true with more than 15 years of proven success across North America.

Built on the Microsoft Dynamics (hot link copy is later) Business Central Platform, AGI COMPASS, provides the functionality to track customers/vendor prepayments, manage inventory among multiple locations, blending, full-cycle accounting and so much more.

AGI COMPASS connects the different parts of your organization, giving you better visibility and control over what's going on in your business. With our role-tailored client capability your people only see what's relevant to them.

Learn more about how you can maximize profits today.

WHY CHOOSE AGI COMPASS



DATA SECURITY

- Secure Cloud-based Microsoft® system
- Secure storage and access to your personal information
- Automatic updates so your data is never lost
- Customers own their data and Management Systems



MOBILE ACCESS

- Real-time access to your data across all mobile devices
- Smartphone, Tablet, PC and MAC® compatible



CAPABILITIES

- Management Forecasting
- Report Generation (real-time)
- Inventory
- Accounting/Business Management
- Capability to integrate with other systems
- Portals for trusted Advisors



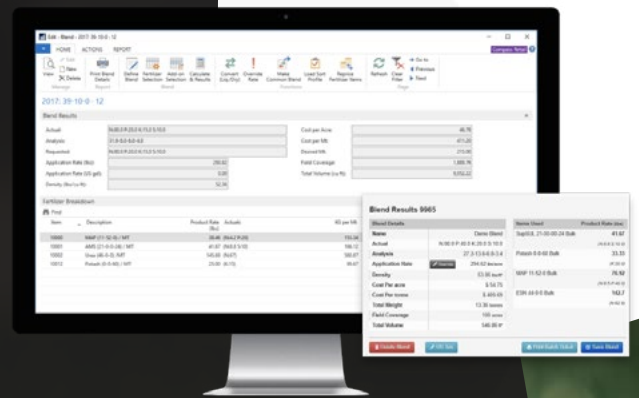
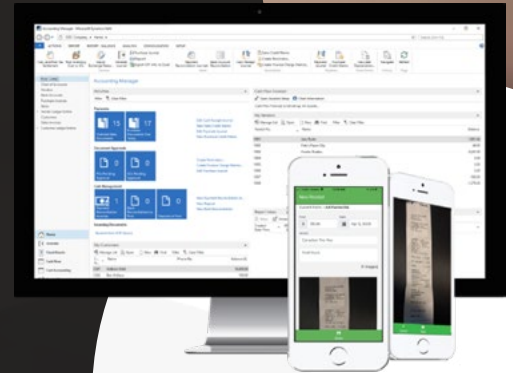
LIVE SUPPORT

- Full-time live support (initial set-up and ongoing)
- Teaching best business practices
- Online training



PLUS

- One-on-one and online training.
- Data set-up and integration support.
- Ongoing user support from a dedicated AGI Management support agent.
- Annual customizations to keep the system always market ready
- Seasonal Licences , use only what you require
- Licences include: Microsoft Licence , Cloud hosting, Support, Training
- Role tailored access- Applications tailored for the user
- Microsoft Modules : Logistics, Manufacturing, Bar Coding
- Manage multiple business on One platform



At AGI COMPASS we are known for our outstanding customer service and ongoing support. We will make it easy for you to navigate any considerations.

Contact us today for our no-hassle discovery conversation.



Neal Dilawri
Senior Vice President
AGI SureTrack



LETS START THE DISCOVERY

What management System do you currently use?

How long have you been using the system?

How many users do you have currently in the system?

Which manual process would you automate?

How many companies/legal entities are in the organization?

How many locations/warehouses are in the organization?

Do you offer grain management?

Do you require any State or Federal reporting?

How do you currently manage your inventory and maintaining inventory levels?

Do you have a warranty Admin process?

If so, what information is required for audit purposes?

What do you not like about your current system?

What functionality do you need that your current system does not provide?

What functionality is an absolute must have in the new system?



Brian Cummings
General Sales Manager
AGI SureTrack

CUSTOMERS

What type(s) of customer do you have?
(Example: sell to Retailers, Individuals.)

Roughly how many customers do you have?

What method of purchasing do customers have access to?
(Storefront, online, call in, in person.)

What functionality is an absolute must have in the new system?

VENDORS

What type(s) of vendors do you have? Distributors, Retailers, Wholesale, local, etc.

Roughly, how many vendors do you have?