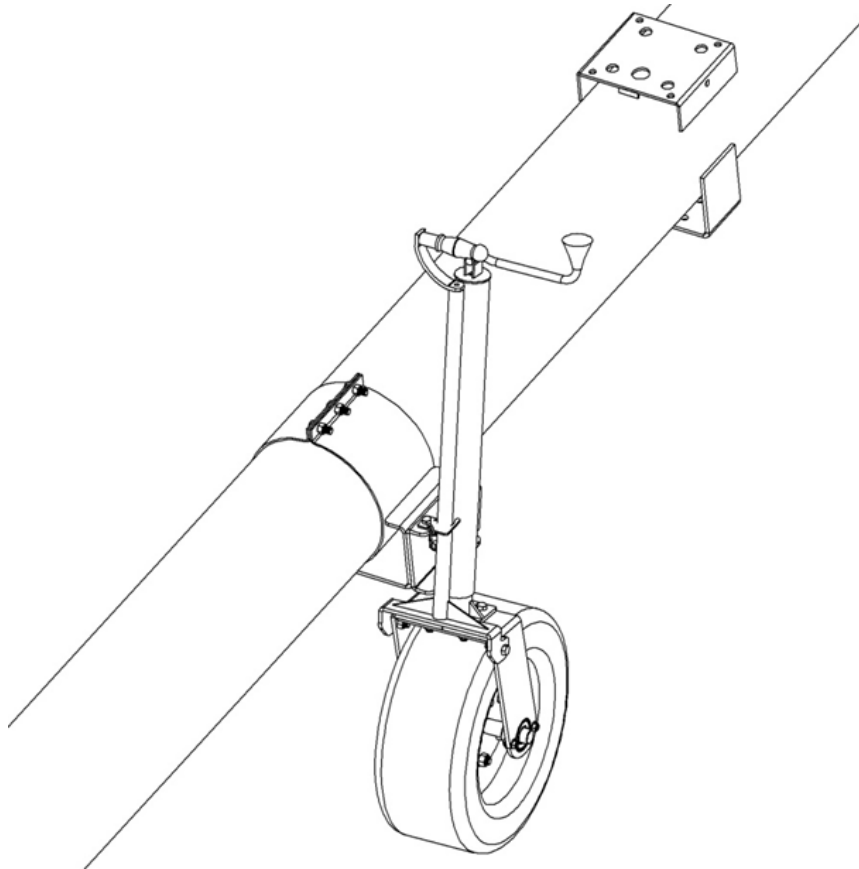


# Wheel Kit

## WR/STX/R/GHR Augers Operator and Assembly Manual

Original Instructions



Read this manual before using product. Failure to follow instructions and safety precautions can result in serious injury, death, or property damage. Keep manual for future reference.

Part Number: 30703 R2

Revised: June 2017

We strongly recommend that all personnel associated with this equipment be trained in the correct operational and safety procedures required for this product. This product has been designed and constructed according to general engineering standards, other local regulations may apply and must be followed by the operator. Use the sign-off sheet below to record initial and periodic reviews of this manual with all such personnel.

[illegible]

CONTENTS

1. Safety..... 4

    1.1. Safety Decals ..... 4

        1.1.1 Decal Installation/Replacement..... 4

        1.1.2 Safety Decal Locations and Details ..... 4

2. Assembly ..... 7

    2.1. Assembly Procedure..... 7

3. Transport..... 10

    3.1. Transport ..... 10

4. Operation ..... 11

    4.1. Operation ..... 11

    4.2. Storage..... 11

5. Maintenance ..... 13

    5.1. Maintenance..... 13

# 1. Safety



This manual is a supplement to the WR/STX/R/GHR Series Assembly and Operator Manual. Please ensure that you have read and understood that manual.

## 1.1. Safety Decals

---

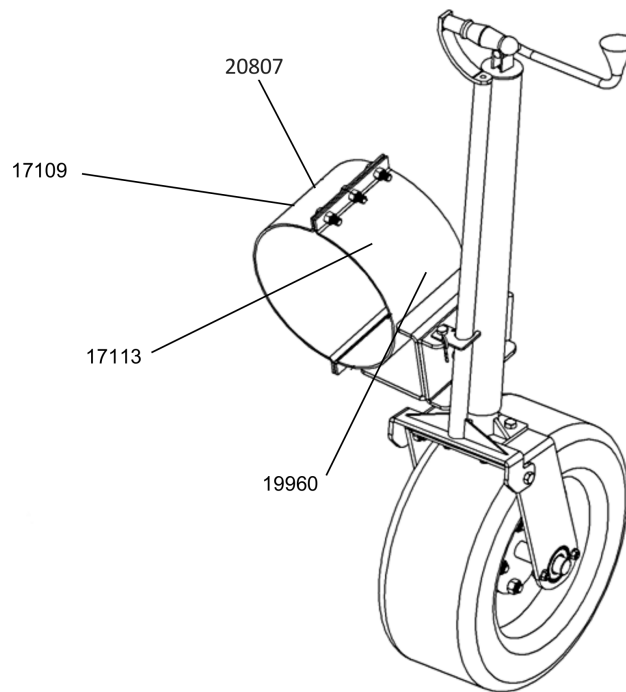
- Keep safety decals clean and legible at all times.
- Replace safety decals that are missing or have become illegible. See decal location figures that follow.
- Replaced parts must display the same decal(s) as the original part.
- Replacement safety decals are available **free of charge** from your distributor, dealer, or factory.



### 1.1.1 Decal Installation/Replacement

1. Decal area must be clean and dry, with a temperature above 50°F (10°C).
2. Decide on the exact position before you remove the backing paper.
3. Align the decal over the specified area and carefully press the small portion with the exposed sticky backing in place.
4. Slowly peel back the remaining paper and carefully smooth the remaining portion of the decal in place.
5. Small air pockets can be pierced with a pin and smoothed out using the sign backing paper.




### 1.1.2 Safety Decal Locations and Details

Replicas of the safety decals that are attached to the wheel kit and their messages are shown in the figure(s) that follow. Safe operation and use of the wheel kit requires that you familiarize yourself with the various safety decals and the areas or particular functions that the decals apply to, as well as the safety precautions that must be taken to avoid serious injury, death, or damage.


**Figure 1. Safety Decal Locations****Table 1. Safety Decals**


Part Number	Description
17113	<div style="background-color: #ffcc00; padding: 5px; text-align: center;">  <b>WARNING</b> </div> <div style="border: 1px solid black; padding: 10px;"> <p style="text-align: center;"><b>TRANSPORT HAZARD</b></p> <p>To prevent serious injury or death:</p> <ul style="list-style-type: none"> <li>• Securely attach equipment to vehicle with correct pin and safety chains.</li> <li>• Use a tow vehicle to move equipment.</li> </ul> </div>
17109	<div style="background-color: #ffff00; padding: 5px; text-align: center;">  <b>CAUTION</b> </div> <div style="border: 1px solid black; padding: 10px;"> <p>For proper raising and lowering of equipment:</p> <ul style="list-style-type: none"> <li>• After lowering equipment, always tighten brake lock by turning winch handle clockwise at least two clicks.</li> <li>• Rotate winch handle until cable has light tension, when in towing position.</li> <li>• Do not lubricate winch brake discs.</li> <li>• Inspect lift cable periodically; replace if damaged.</li> <li>• Inspect cable clamps periodically; tighten if necessary.</li> </ul> </div>

**Table 1 Safety Decals (continued)**

Part Number	Description
20807	<div data-bbox="350 247 899 317">  <b>WARNING</b> </div> <div data-bbox="350 317 899 562">   </div> <div data-bbox="370 573 883 1192"> <p>To prevent serious injury or death:</p> <ul style="list-style-type: none"> <li>• Read and understand the manual before assembling, operating, or maintaining the equipment.</li> <li>• Only trained personnel may assemble, operate, or maintain the equipment.</li> <li>• Children and untrained personnel must be kept outside of the work area.</li> <li>• Do not modify the equipment. Keep in good working order.</li> <li>• If the manual, guards, or decals are missing or damaged, contact factory or dealer for replacements.</li> <li>• Lock out power before performing maintenance.</li> <li>• To prevent equipment collapse, support equipment tube while disassembling certain components.</li> <li>• Electric motors must be grounded. Disconnect power before resetting overloads.</li> </ul> </div>
19960	<div data-bbox="350 1255 899 1331"> <b>NOTICE</b> </div> <div data-bbox="370 1346 867 1541"> <p>To prevent damage, wheels must be free to move when raising or lowering equipment.</p> <p>When equipment is positioned, chock all wheels.</p> </div>


## 2. Assembly

 Before continuing, ensure you have completely read and understood this manual's Safety section, in addition to the safety information in the section(s) below.

 This manual is a supplement to the WR/STX/R/GHR Series Assembly and Operator Manual. Please ensure that you have read and understood that manual.

### 2.1. Assembly Procedure

---

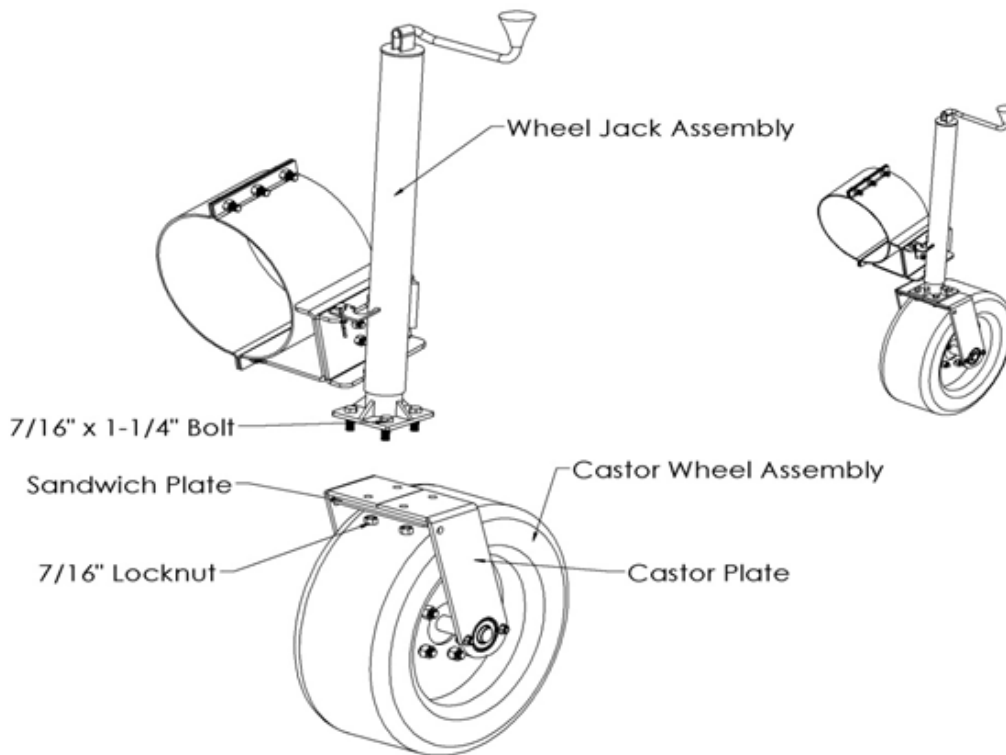
 **WR/GHR Series only:** Ensure that frame stabilizer brackets are installed, refer to operator's manual.

1. Bolt the wheel jack assembly to the castor wheel assembly using four 7/16" x 1-1/4" bolts and locknuts. Tighten and secure.

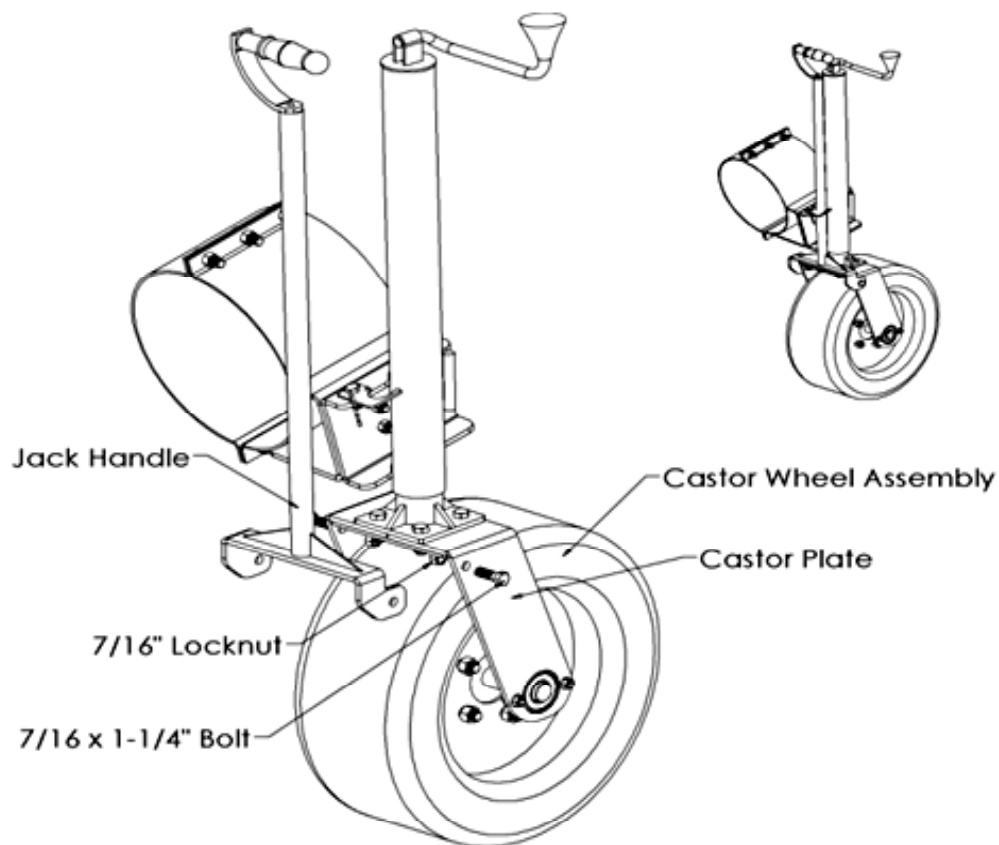
**Note**

The sandwich plate connects under the two castor plates.

**Figure 2. Attaching the Wheel Jack Assembly**



2. Attach the transport handle to the castor plates using two 7/16" x 1-1/4" bolts and locknuts. Tighten snug only; these bolts act as pivot points.

**Figure 3. Attaching the Transport Handle**

3. Attach the wheel kit to tube using half clamps.
4. Loosely secure the half clamps with six (for 8"/10") or eight (for 13") 7/16" x 1-1/4" bolts and locknuts.
5. Position the wheel kit at a distance "x" as shown in [Table 2](#).

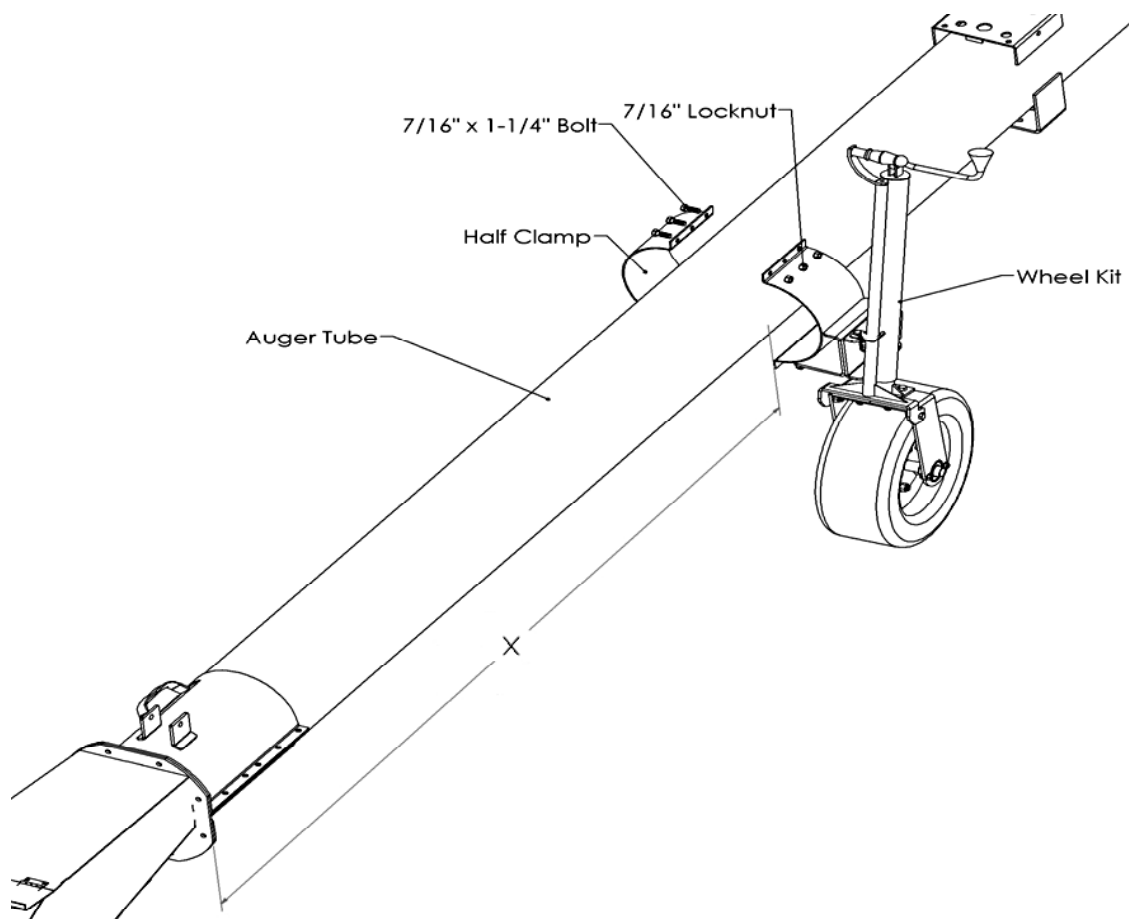
**Table 2. Distance "x"**

Model	x (in)
STX/R 80-36	60
STX/R 80-41	72
STX/R 80-46	72
STX/R 80-51	72
STX/R 100-36	52
STX/R 100-41	65
STX/R 100-51	72
WR 80-26	60
WR/GHR 80-31	69
WR/GHR 80-36	76
WR/GHR 80-41	69
WR/GHR 80-46	76
WR/GHR 80-51	69
WR/GHR 80-56	80
WR/GHR 80-61	88
WR/GHR 80-71	94
WR/GHR 100-31	69



**Table 2 Distance “x” (continued)**

Model	x (in)
WR/GHR 100-41	63
WR/GHR 100-51	63
WR/GHR 100-61	89
WR/GHR 100-71	88
W/GHR 130-31	45.5
W/GHR 130-36	45
W/GHR 130-41	47
W/GHR 130-51	49
W/GHR 130-61	45
W/GHR 130-71	50

**Figure 4. Attaching the Wheel Kit**

- Position the half clamps so that auger jack (wheel kit) is vertical. Tighten the 7/16" locknuts.

# 3. Transport



Before continuing, ensure you have completely read and understood this manual's Safety section, in addition to the safety information in the section(s) below.



This manual is a supplement to the WR/STX/R/GHR Series Assembly and Operator Manual. Please ensure that you have read and understood that manual.

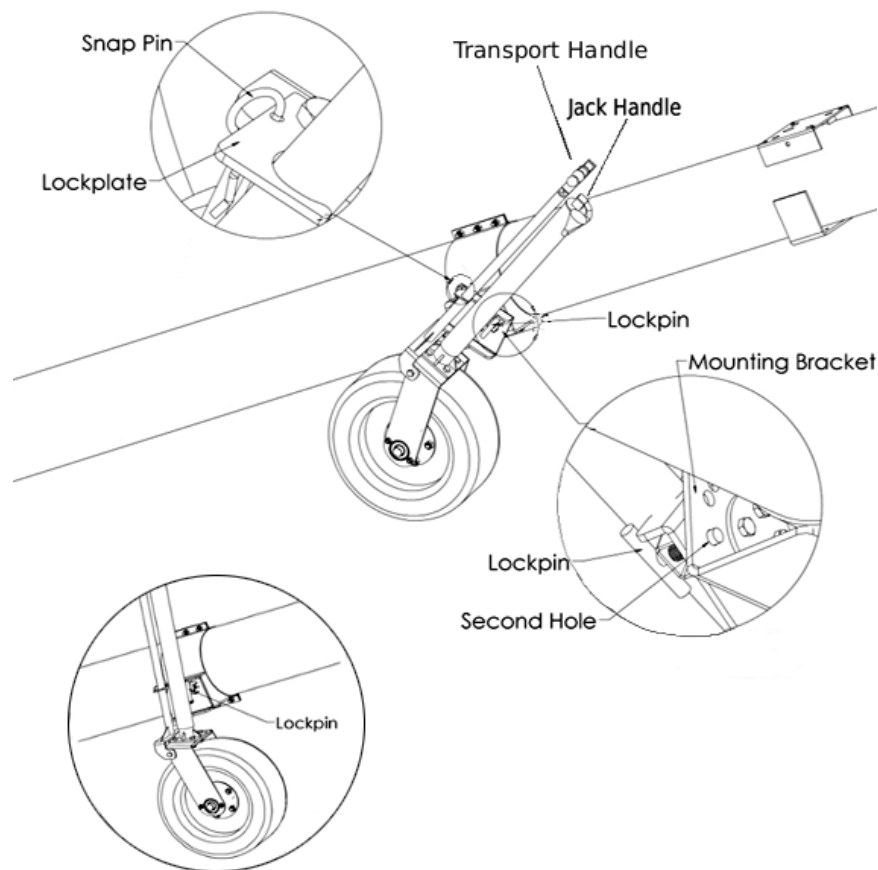
## 3.1. Transport

1. Place the wheel kit in transport position by disengaging spring-loaded lockpin and turn wheel kit clockwise.
2. Secure the wheel kit in second hole in half clamp mounting bracket.

### NOTICE

Damage to the equipment could result from not placing the wheel kit in transport position prior to transport.

**Figure 5. Preparing for Transport**



3. Place the jack handle in the transport position, use snap pin and lock plate to secure the jack handle.

### NOTICE

Wheel kit and jack handle must be in transport position before transporting the auger.

# 4. Operation



Before continuing, ensure you have completely read and understood this manual's Safety section, in addition to the safety information in the section(s) below.



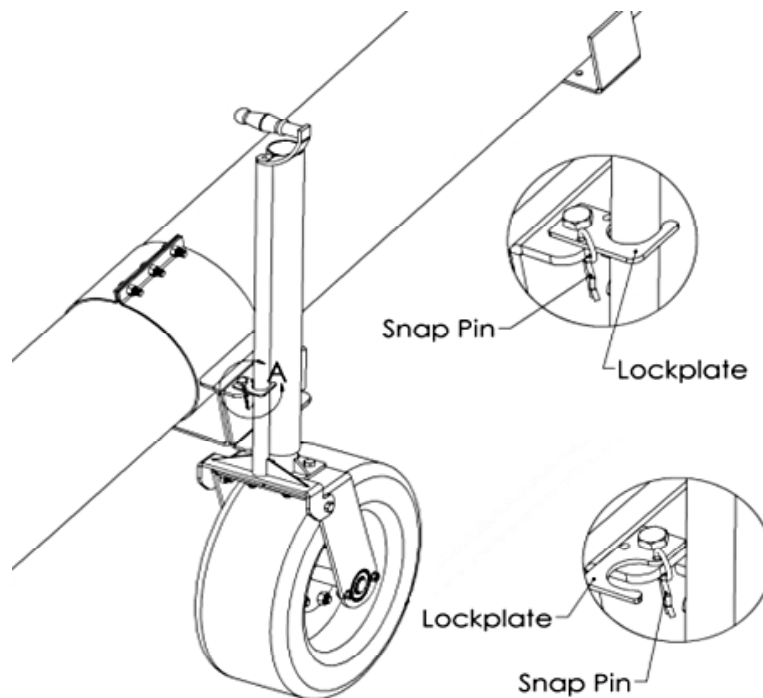
This manual is a supplement to the WR/STX/R/GHR Series Assembly and Operator Manual. Please ensure that you have read and understood that manual.

## 4.1. Operation

---

1. Place the wheel kit in operation position by disengaging the spring-loaded lock pin and turning the wheel kit counterclockwise.
2. Secure the wheel kit in hole in mounting bracket so that it is roughly perpendicular to the ground.
3. Disengage the transport handle by removing the snap pin and lock plate, and reinserting the snap pin.

**Figure 6. Preparing for Operation**



4. Lower the wheel to the ground by turning the jack handle and lifting auger hopper to desired height.
5. Move auger to desired position using the transport handle.

## 4.2. Storage

---

### Off-Season Storage

1. Raise the wheel to full up and secure in transport position.



2. Inspect the unit for damage and note any repairs required. Order replacement parts from your dealer
3. Check tire pressure and inflate to 45 psi (310 kPa).



### **To Prepare for Use After Storage**

1. Check the tire pressure and inflate according to recommendation if necessary, see [Section 5. Maintenance on page 13](#).
2. Keep the decals clean. Replace any decal that is damaged or not clearly visible.
3. Conduct the general maintenance procedure before using auger.

#### **Important**

Use only genuine AGI replacement parts or equivalent. Replacement parts **MUST** meet ASABE standards or serious injuries may result. Use of unauthorized parts will void warranty. If in doubt, contact AGI or your local AGI dealer. Do not modify any components of the Auger Jack (Wheel Move).

# 5. Maintenance

-  Before continuing, ensure you have completely read and understood this manual’s Safety section, in addition to the safety information in the section(s) below.
-  This manual is a supplement to the WR/STX/R/GHR Series Assembly and Operator Manual. Please ensure that you have read and understood that manual.

## 5.1. Maintenance

---

Please follow the guideline below:

Area	Maintenance Procedure	Frequency
Tire Pressure	Check with pressure gauge. Recommended pressure is 40 to 45 psi (276 to 310 kPa).	Monthly, or as required





# Limited Warranty

AGI warrants to the buyer that the new machinery is free from defects in material and workmanship.

This warranty is only effective for any new machinery that has not been altered, changed, repaired, or treated since its delivery to the buyer, other than by AGI or its authorized dealers or employees, and does not apply to accessories, attachments, tools, or parts sold or operated with the new machinery if they have not been manufactured by AGI.

AGI shall only be liable for defects in the material or workmanship attributed to faulty material or bad workmanship that can be proved by the buyer, and specifically excludes liability for repairs arising as a result of normal wear and tear of the new machinery or in any other manner whatsoever, and without limiting the generality of the foregoing, excludes application or installation of parts not completed in accordance with AGI operation manual, specifications, or printed instructions.

A Warranty Registration Form and Inspection Report must be completed at the time of delivery and returned to AGI within thirty (30) days.

## Warranty Period

Defective parts are subject to inspection by an AGI representative prior to approval of a warranty claim. All returned parts must be sent to the factory, freight pre-paid, in order to qualify for warranty replacement. Repaired or replaced parts will be returned freight collect.

If these conditions are fulfilled, AGI shall at its own cost and its own option either repair or replace any defective parts provided that the buyer shall be responsible for all expenses incurred as a result of repairs, labor, parts, transportation, or any other work, unless AGI has authorized such expenses in advance. Normal wear and service items such as belts, hoses, flashing, etc. are excluded from warranty.

The warranty shall not extend to any repairs, changes, alterations, or replacements made to the new equipment other than by AGI or its authorized dealers or employees.

This warranty extends only to the original owner of the new equipment.

This warranty is limited to the terms stated herein and is in lieu of any other warranties whether expressed or implied, and without limiting the generality of the foregoing, excluded all warranties, expressed or implied, or conditions whether statutory or otherwise as to quality and fitness for any purpose of the new equipment, AGI disclaims all liability for incidental or consequential damages.

This machine is subject to design changes and AGI shall not be required to retro-fit or exchange items on previously sold units except at its own option.

## WARRANTY VOID IF NOT REGISTERED





P.O. Box 39  
Rosenort, Manitoba, R0G 1W0 Canada  
Phone: (866) 467-7207 (Canada & USA) or (204) 746-2396  
Fax: (866) 768-4852

Website: [www.grainaugers.com](http://www.grainaugers.com) | [www.wheatheart.com](http://www.wheatheart.com)  
Email: [sales@grainaugers.com](mailto:sales@grainaugers.com) | [sales@wheatheart.com](mailto:sales@wheatheart.com)  
©Ag Growth International Inc. 2017  
Printed in Canada