

MK80/100 REVERSING KIT INSTALLATION, OPERATION, & SAFETY

We recommend that two or more people be present for this procedure.

TO PREPARE AUGER FOR KIT INSTALLATION

1. Park auger on level ground. Lower auger to full down position and remove tractor from auger. Chock auger wheels to prevent rolling.
2. Lower swing hopper fully to ground.
3. Support intake end securely with front-end loader and strong sling or chain, or with block and tackle.
4. Remove swing hopper from auger boot (see operation manual for further instructions).
5. Remove PTO driveline from auger.
6. Remove sprocket shield from boot.

REVERSING KIT INSTALLATION

1. Remove the three locknuts at lower bearing marked A (Figure 1).

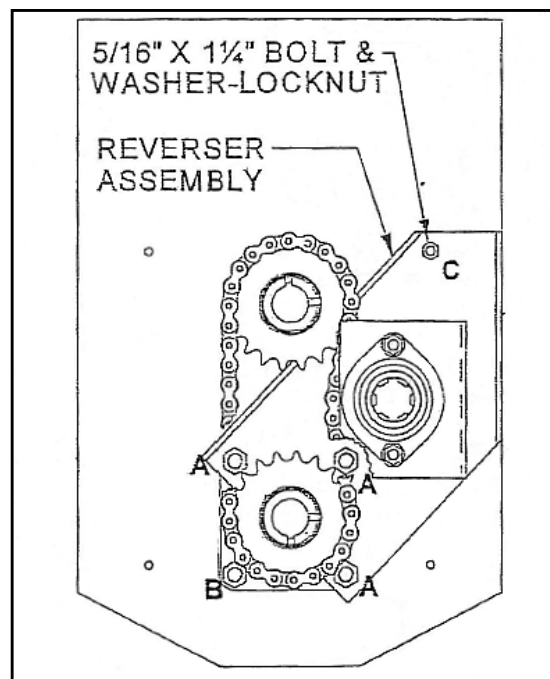


Figure 1

2. Loosen the fourth nut marked B.
3. Replace the three bolts marked A with three 1/2" x 1-3/4" bolts.
4. Position the reverser assembly over the bolts marked A; install nuts loosely on threads.

Note: *The reverser sprocket must engage with the roller chain.*

5. Place the spacer (1/2" locknut) behind the reverser assembly at position C (Figure 1 and 2), then loosely install the 5/16" x 1-1/4" bolt and washer-lock nut.

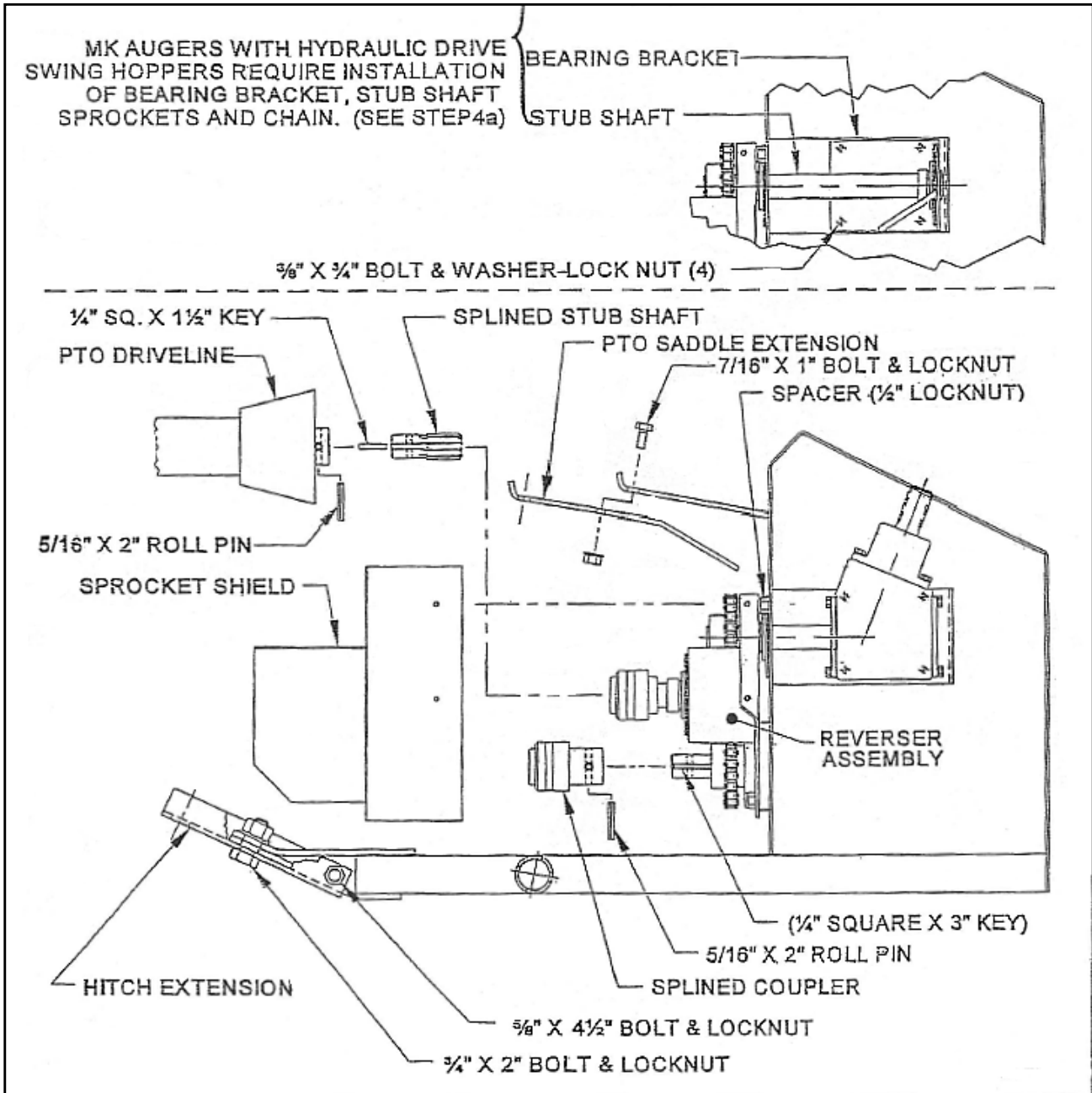
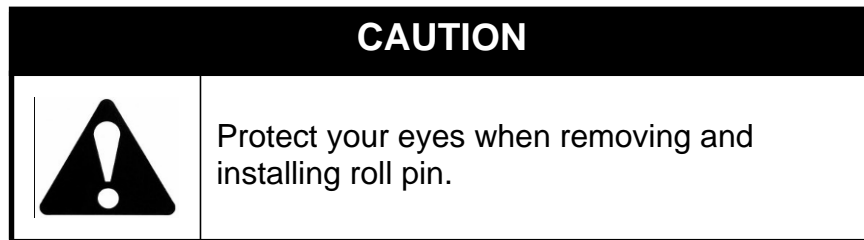


Figure 2

6. For models with a hydraulic driven swinghopper, install bearing bracket, stub shaft, sprockets, and chain to the gearbox mounting bracket inside boot with four 3/8" x 3/4" bolts and washer-lock nuts (Figure 2).
7. Adjust the roller chain tension, then tighten all bolts and nuts at locations A, B, and C.
8. Install the splined coupler onto the lower flighting shaft and square key. Secure with new 5/16" x 2" roll pin (Figure 2).



9. Install the new sprocket shield using four 5/16" x 3/4" bolts.
10. Attach PTO driveline saddle extension with one 7/16" x 1" bolt and locknut as shown in Figure 2.
11. Fasten hitch extension to tow bar with one 3/4" x 2" bolt and locknut, and one 5/8" x 4-1/2" bolt and locknut.
12. Insert splined stub shaft with 1/4" x 1-1/2" square key into implement end of the PTO driveline and secure with a new 5/16" x 2" roll pin. Tighten set screws securely.
13. Replace swing hopper.

REVERSER OPERATING AND SAFETY INSTRUCTIONS

Additional to instructions in operation manual. Read and understand all instructions before operating auger.

Before Operating in the Normal Forward Mode:

1. Install the splined stub shaft on the PTO driveline into the lower splined coupler. Make certain it is locked securely into place.
2. Ensure the cleanout cover is secured in place on the auger boot.

Note: *All safety shields must be in place before operating.*


To Operate in the Reverse Mode

1. Install the splined stub shaft on the PTO driveline into the upper splined coupler. Make certain it is locked securely into place.
2. Remove clean-out cover before operating in reverse mode.
3. Operate auger slowly in reverse for a few seconds. **Do not exceed 100 rpm.**

4. When boot is nearly full, shut off and lock out power, then clean grain out of boot using a stick. **Do not use hands.** Repeat steps 3 and 4 as needed.

Important:

*Reversing kit is designed to assist in clean out of auger. **It is not designed to unplug auger.** When operating in the reverse mode, auger must be monitored to prevent boot from overflowing. Excessive back pressure will cause extensive damage to the auger that is not covered by warranty.*

WARNING	
	Shut down and lock out all power before emptying boot.
	Shut down and lock out all power before changing to forward or reverse modes.
	Ensure that PTO driveline is securely attached before operating.
	Do not exceed reverse operating speed of 100 rpm. Do not exceed forward operating speed of 540 rpm.
	Keep body, hair, and clothing away from all moving parts including PTO driveline.

** Westfield reserves the right to update safety decals without notice. Safety decals may not be exactly as shown.*

WESTFIELD INDUSTRIES LTD.

A Division of Ag Growth Industries Partnership,
part of the Ag Growth International Inc. Group
Box 39, Rosenort, Manitoba, Canada R0G 1W0 Ph: (866) 467-7207 Fax: (866) 768-4852
Web: www.grinaugers.com E-mail: sales@grinaugers.com