

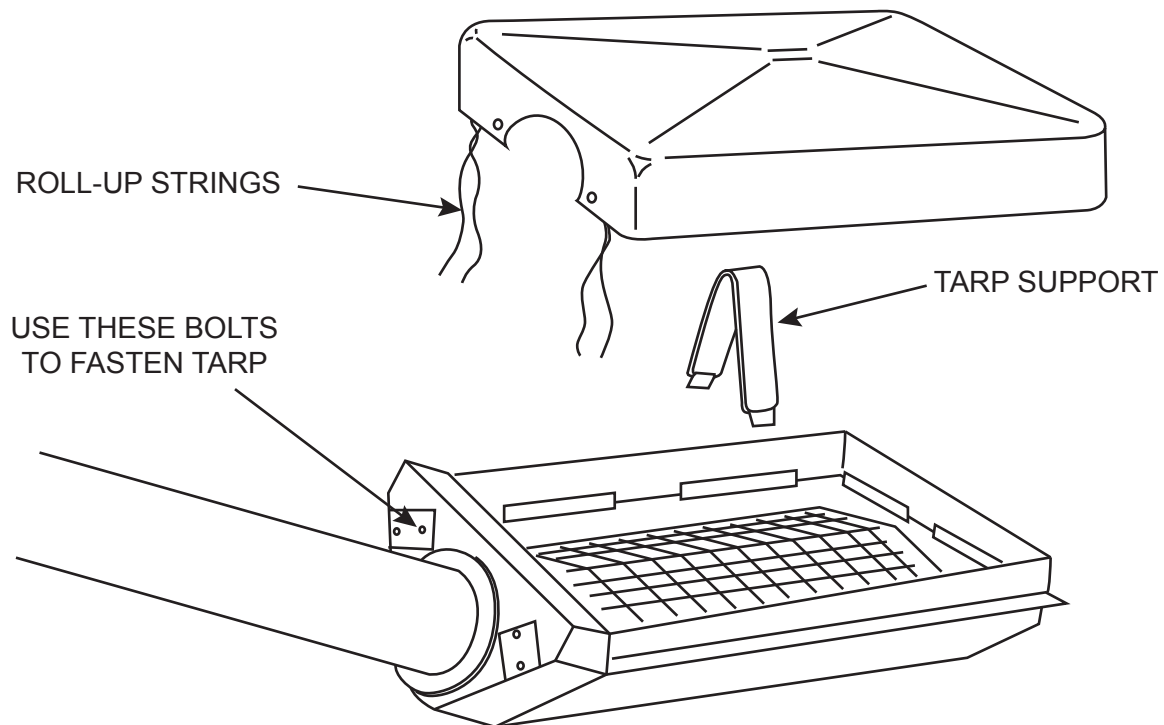


HOPPER TARP (A160/A167) For MK Series Auger Models

How to attach Hopper Tarp:

1. Attach tarp to hopper using bolts already in place. Place bolts through grommets in tarp.
2. Attach tarp support by locking it into center of hopper shield mesh. The tarp support forms a peak in the tarp for better water run-off.
3. Pull tarp over hopper. The elastic will hold it in place.
4. To use hopper, roll up tarp in tight roll and tie up with the two sets of strings.

NOTE: Tarp support is easily removed when low profile of hopper is needed.



P.O. Box 39, Rosenort, Manitoba, R0G 1W0 Canada
Phone: (866) 467-7207 (Canada & USA) or (204) 746-2396 Fax: (866) 768-4852
Website: www.grainaugers.com Email: sales@grainaugers.com
©Ag Growth International Inc. 2018

Part Number: 30838 R1
Revised: Oct 2018