



A382

Right Angle Drive Kit

Portable Grain Auger

Installation Instructions

Applicable Models:

Westfield MKX16, AGI X16, Hutchinson HX16, Mayrath HX16, GrainMaxx GMX16 Series



Read and understand the safety information in the Portable Grain Auger manuals before proceeding. Read and understand the instructions in this manual before installing the Right Angle Drive Kit.

Pre-Installation Instructions

To prepare the auger for kit installation:

1. Park the auger on level ground. Fully lower the frame.
2. Chock the auger wheels to prevent rolling.
3. Relieve the pressure in the hydraulic hose(s) and disconnect them from the tractor.
4. Remove the bolt and lock nut securing the safety chain to the tow bar assembly.
5. Attach the jack mount to the tow bar using two 5/8" x 6" bolts and lock nuts.
6. Re-attach the safety chain and secure the jack mount to the tow bar using one 1/2" x 6" bolt and lock nut.
7. Place the support leg as shown in the following illustration. Secure using one 7/16" x 3" bolt and lock nut.

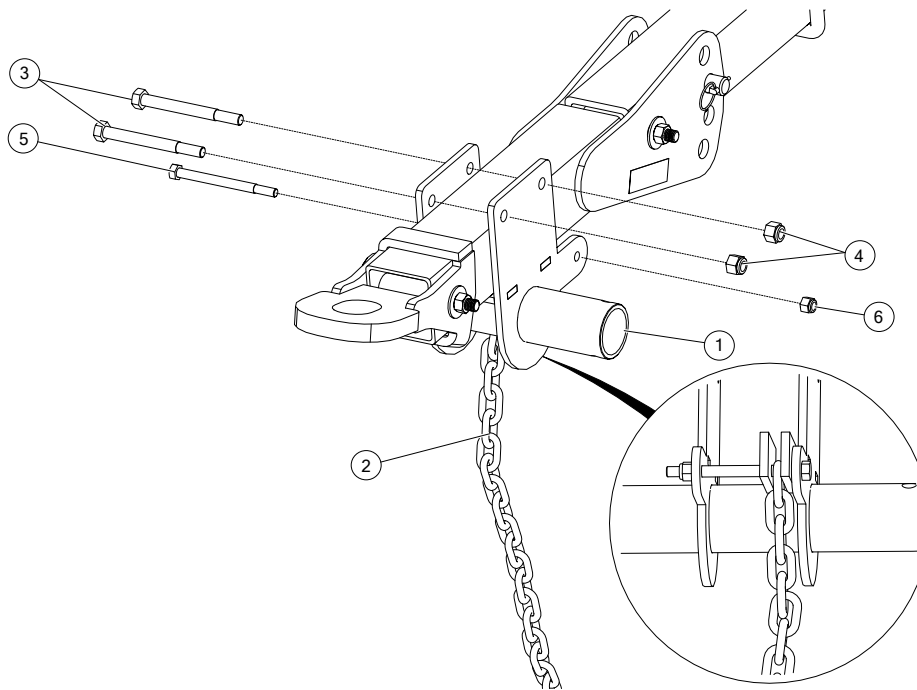


WARNING

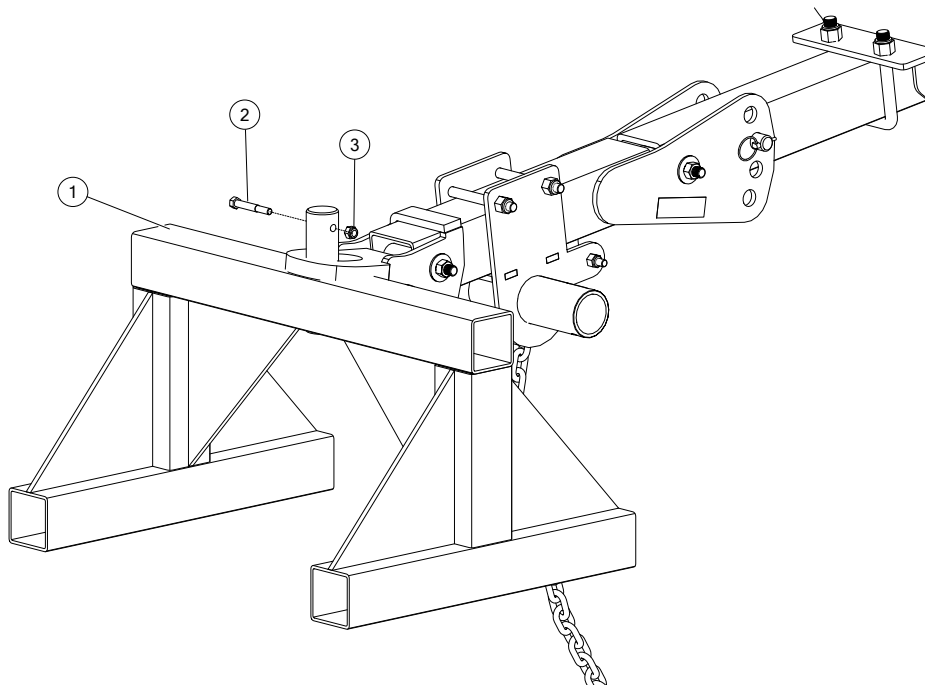
Crush Hazard

To prevent injury, do not use the support leg without the bolt and lock nut in place.

8. Remove the jack.
9. Remove the sprocket cover from the boot.
10. Remove the CV-PTO driveline from the splined stub shaft by driving out the PTO roll pin. Do not remove the splined stub shaft from the gearbox.

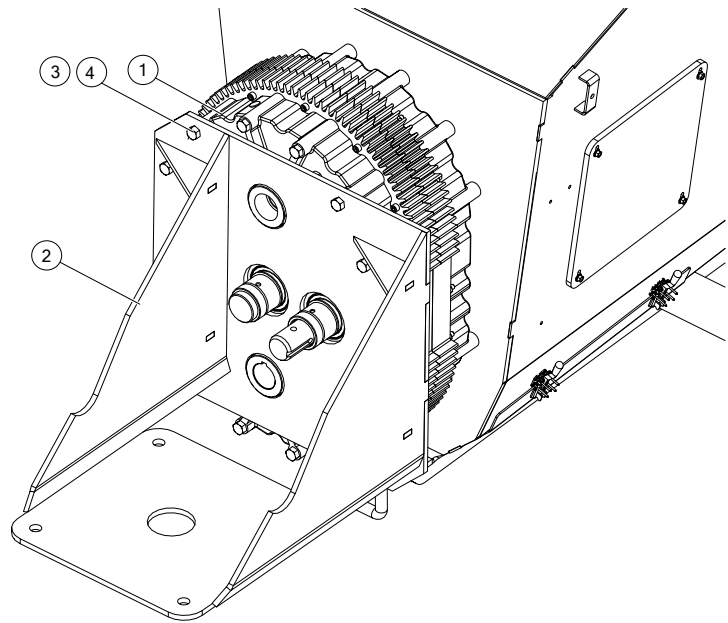


1	Jack Mount	4	Lock Nut, 5/8"
2	Safety Chain	5	Bolt, 1/2" x 6"
3	Bolt, 5/8" x 6"	6	Lock Nut, 1/2"

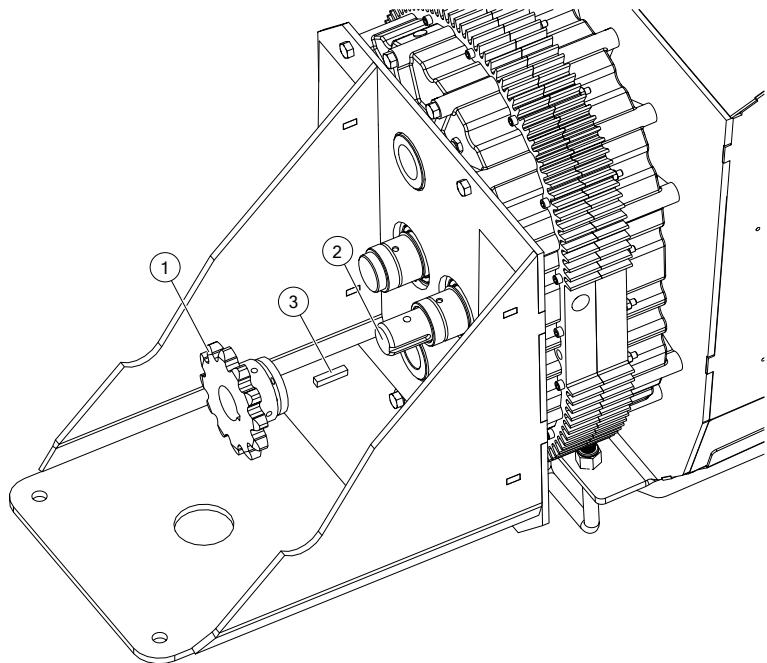


1	Support Stand	3	Lock Nut, 7/16"
2	Bolt, 7/16" x 3"		

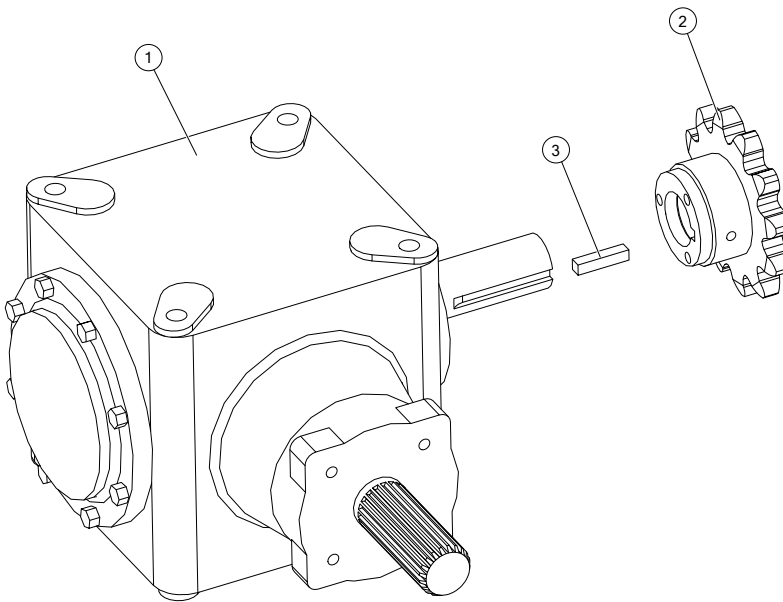
Installing the Right Angle Drive



1	Speed Reducer	3	Bolt, 1/2" x 12"
2	Right Angle Drive Mount	4	Lock Nut, 1/2"

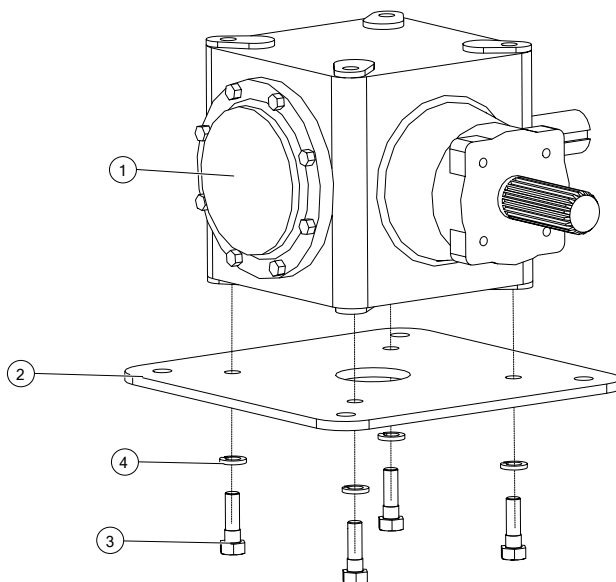


1	Sprocket	3	Square Key, 3/8" x 1-3/4"
2	Splined Stub Shaft		

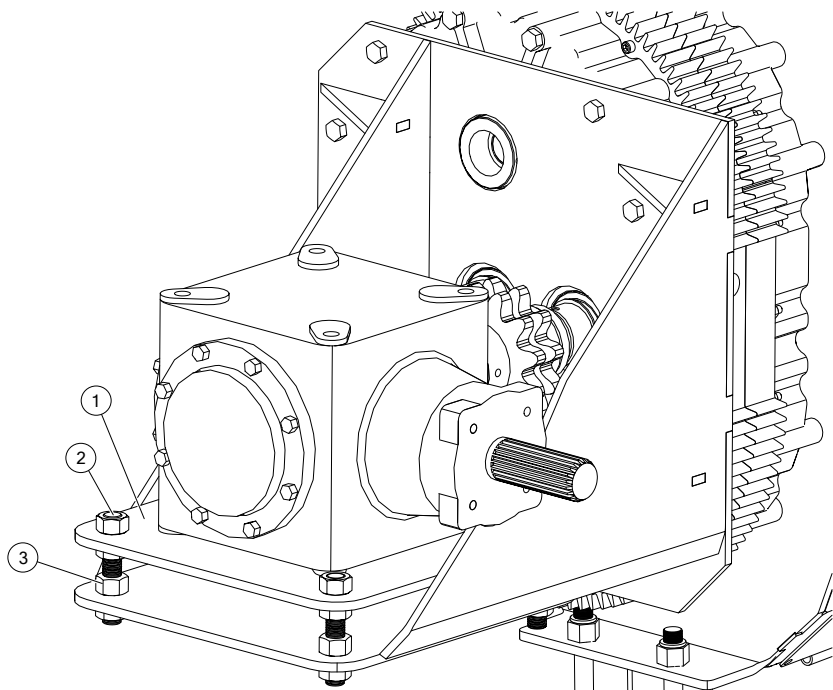
**Assembly Note:**

- The gearbox is sent from the factory filled halfway with EP90 oil. Before assembly, check the oil level to make certain the gearbox is half full. Add oil if necessary. Do not use grease.
- Place the outside face of the sprocket flush with the end of the gearbox shaft.

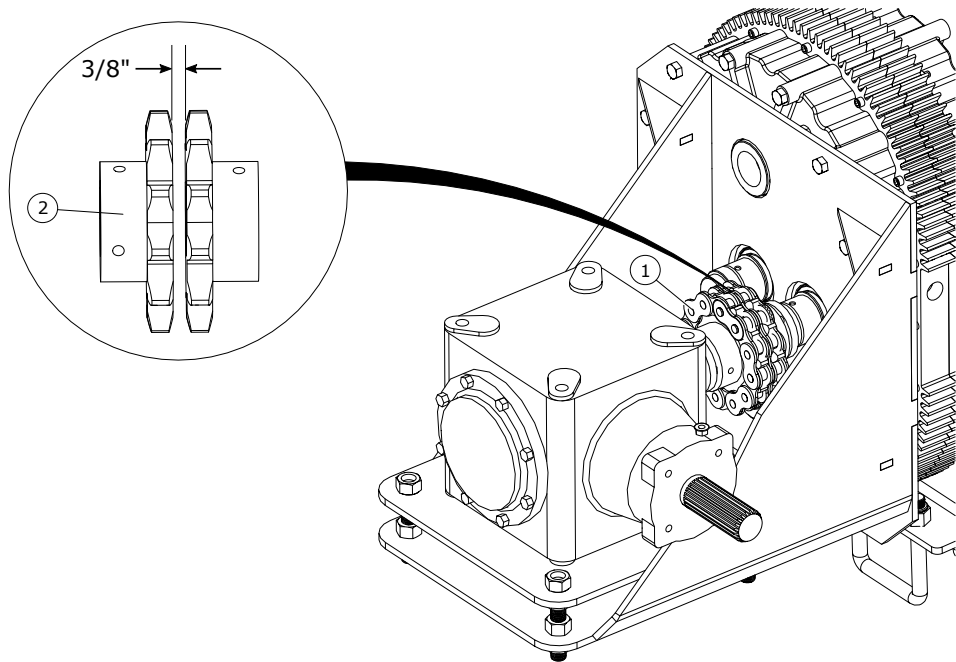
1	Gearbox	3	Square Key, 3/8" x 1-3/4"
2	Sprocket		



1	Gearbox	3	Bolt, 5/8" x 2"
2	Gearbox Mount Plate	4	Lock Washer, 5/8"



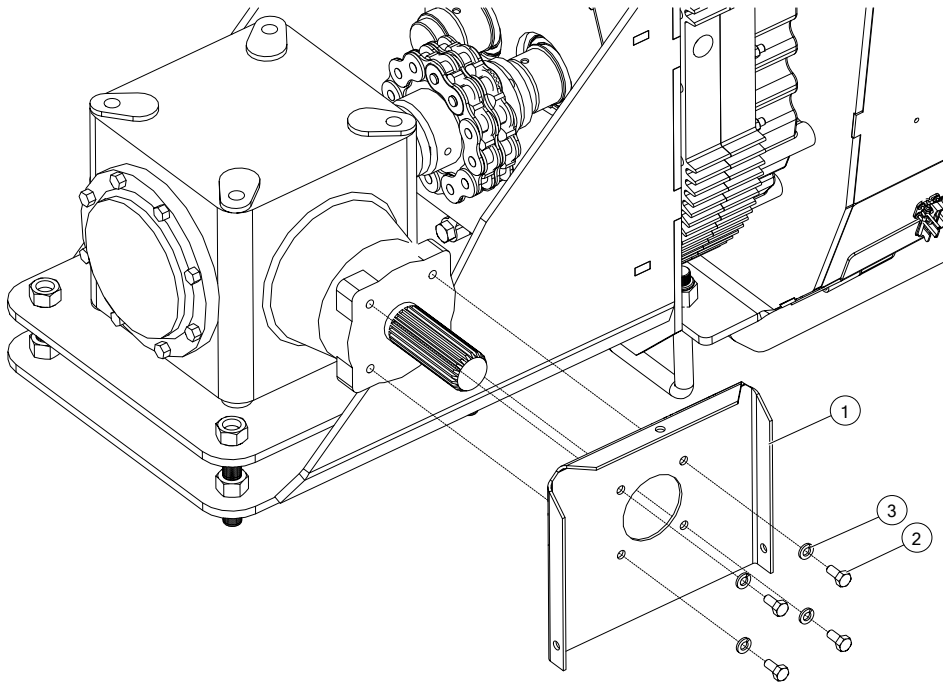
1	Gearbox Mount Plate	3	Hex Nut, 3/4"
2	Threaded Rod, 3/4"		



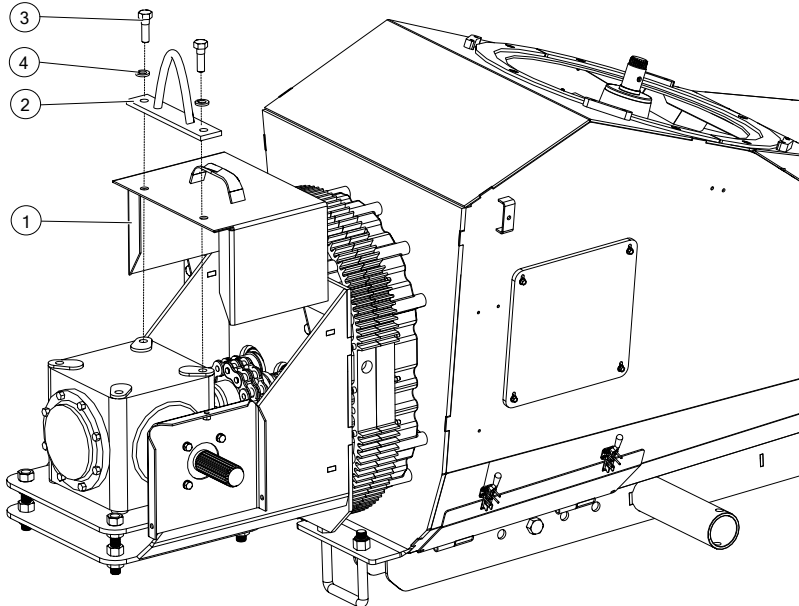
Assembly Note:

- Align the coupler sprockets by adjusting the gearbox. Leave 3/8" clearance between sprockets.

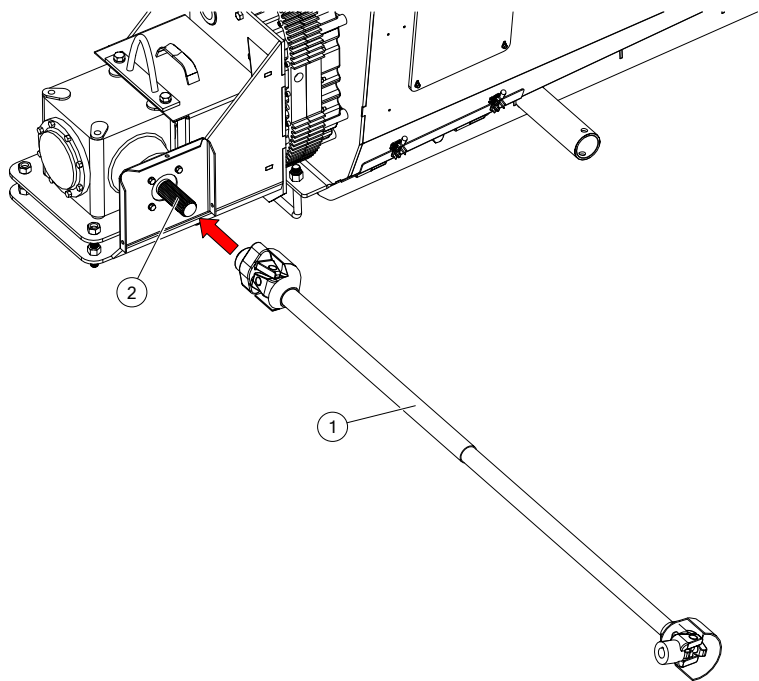
1	Chain	2	Sprocket
---	-------	---	----------



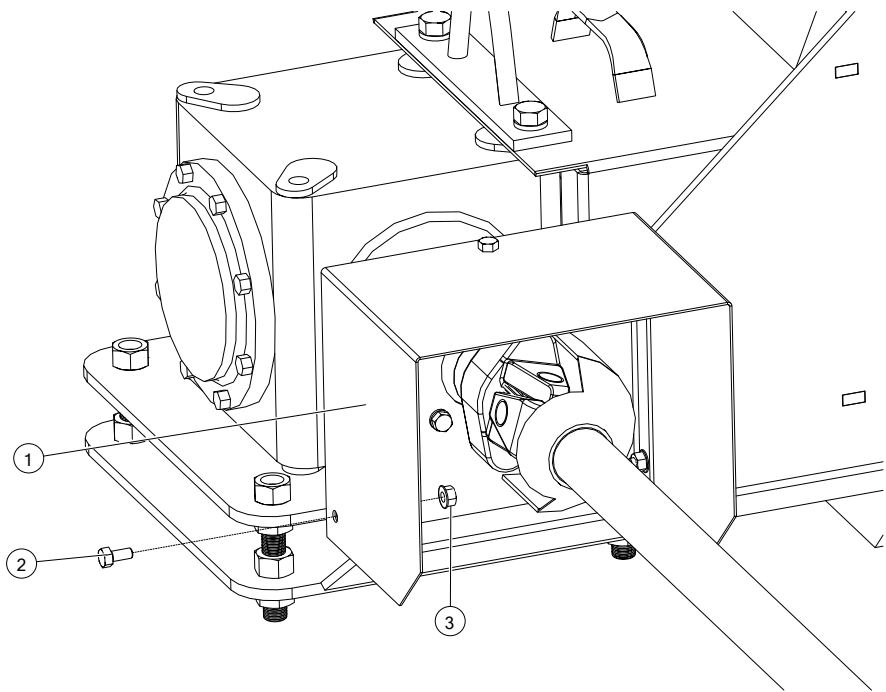
1	PTO Shield Mount Plate	3	Lock Washer, 3/8"
2	Bolt, 3/8" x 3/4"		



1	Sprocket Shield Cover	3	Bolt, 5/8" x 2"
2	Gearbox Lift Mount	4	Lock Washer, 5/8"



1	PTO	2	Gearbox
---	-----	---	---------








1	PTO Shield Bracket	3	Flange Nut, 3/8"
2	Bolt, 3/8" x 3/4"		

AGI is a leading provider of equipment solutions for agriculture bulk commodities including seed, fertilizer, grain, and feed systems with a growing platform in providing equipment and solutions for food processing facilities. AGI has manufacturing facilities in Canada, the United States, the United Kingdom, Brazil, South Africa, India and Italy and distributes its products globally.



P.O. Box 39, Rosenort, Manitoba, R0G 1W0 Canada
P 866.467.7207 (Canada & USA) or 204.746.2396 | F 866.768.4852 | E sales@grainaugers.com

AGGROWTH.COM aggrowthintl     
©Ag Growth International Inc. 2022 | Printed in Canada