



A495

Electronic Throttle Controls Kit

Installation Instructions

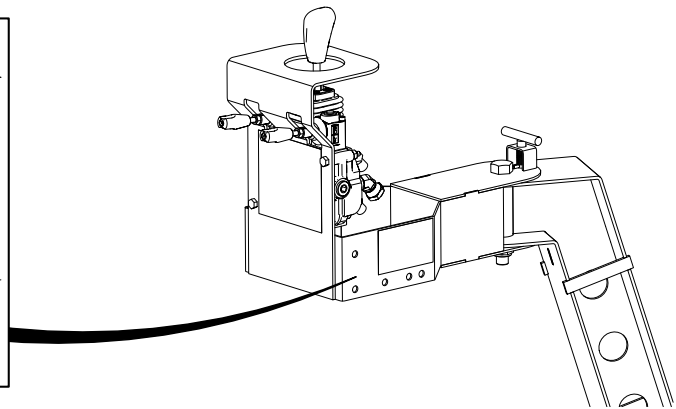
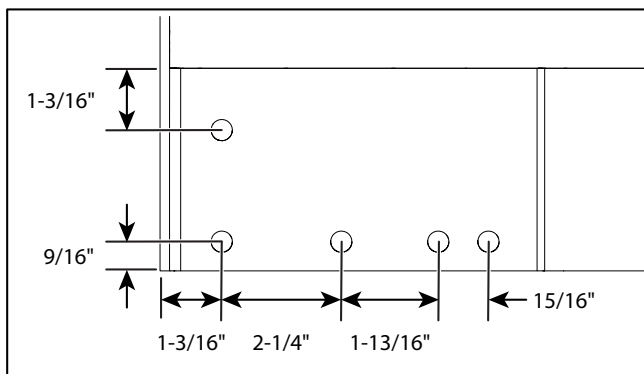
Applicable Models:

Westfield, AGI, Hutchinson, Mayrath, and GrainMaxx UTX Series

Pre-Installation Instructions

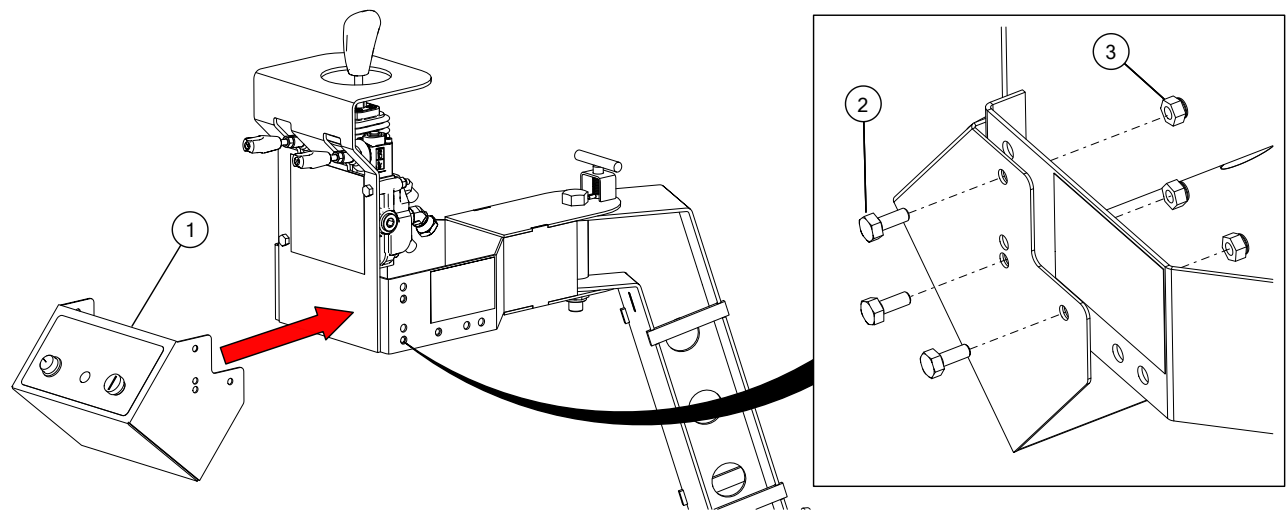
This step is only required when the mover controls assembly does not have the throttle control mounting holes.

1. Drill five $\frac{3}{8}$ " holes on each side of the control arm as shown.



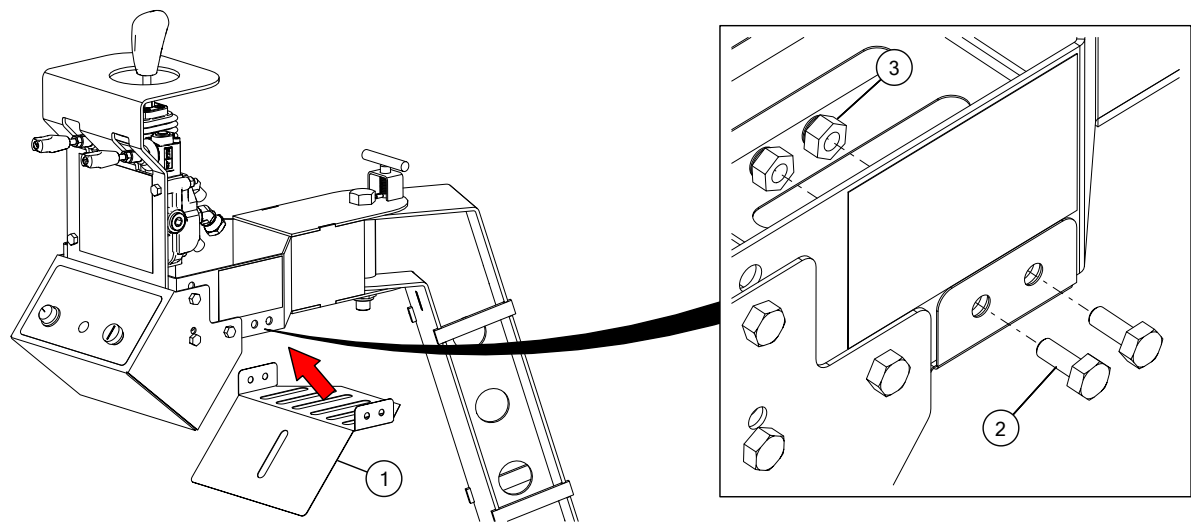
Installing Electronic Throttle Controls Kit

Attaching the Throttle Controls



1	Throttle controls	3	Locknut, 5/16"
2	Bolt, 5/16" x 3/4"		

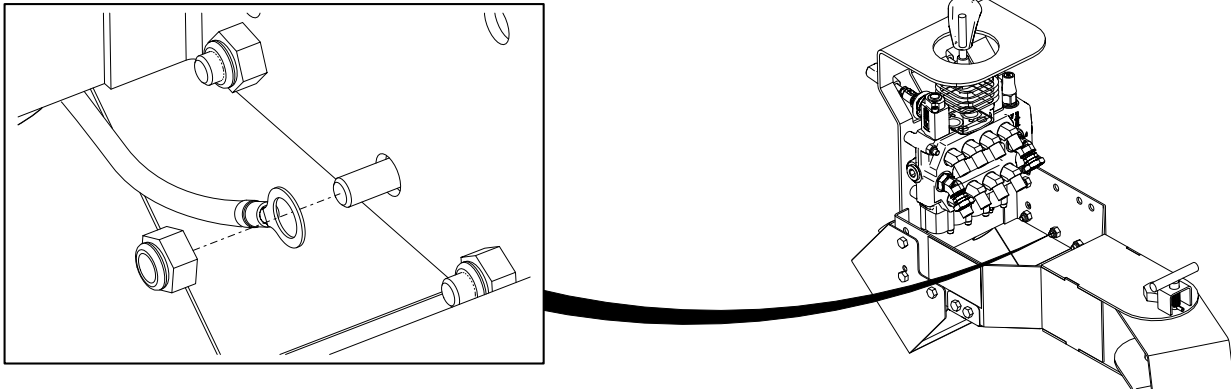
Attaching the Bottom Cover



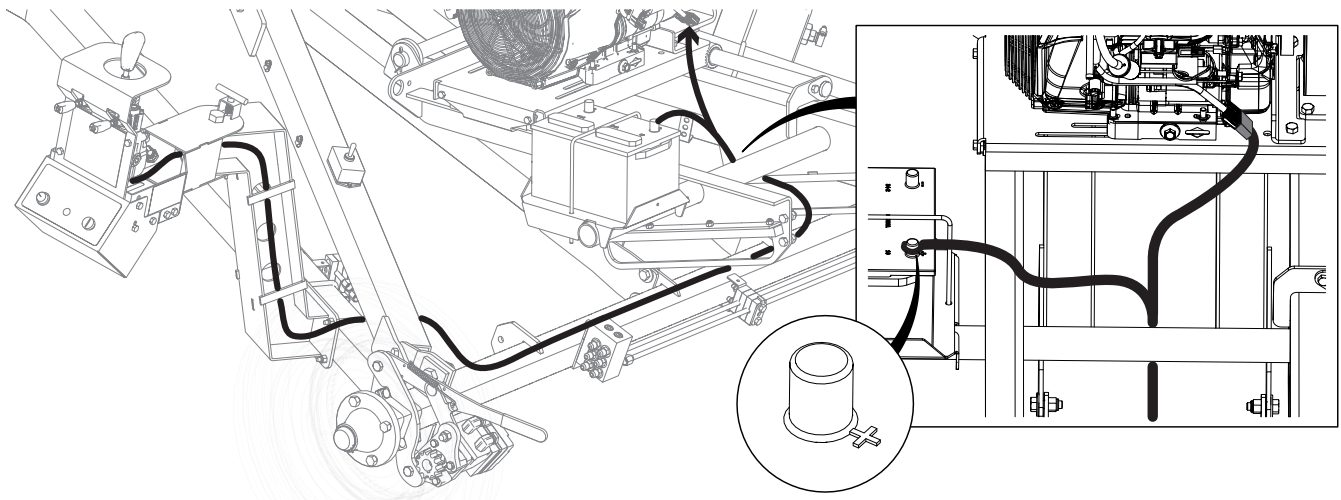
1	Throttle controls bottom cover	3	Locknut, 5/16"
2	Bolt, 5/16" x 3/4"		

Harness Routing

Attaching the Ground Wire Ring Terminal



Routing the Harness



P.O. Box 39
Rosenort, Manitoba, R0G 1W0 Canada
Phone: (866) 467-7207 (Canada & USA) or (204) 746-2396
Fax: (866) 768-4852

Website: www.aggrowth.com
Email: sales@grainaugers.com
©Ag Growth International Inc. 2021, Printed in Canada