



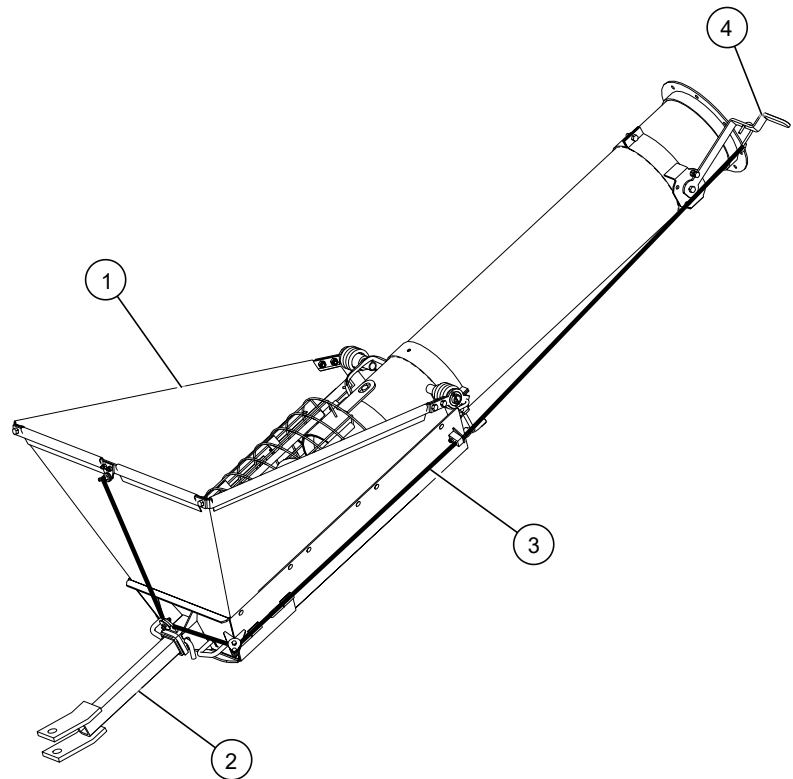
# **A481/A482/A483 Enclosed Hopper Kit Portable Grain Auger Installation and Operation Instructions**

## **Applicable Models:**

- Westfield WRX, WR, W13, STX2 8"/10"/13" Series
- AGI WRX, XTA 8"/10"/13" Series
- Hutchinson WRX, W13, STX2 8"/10"/13" Series
- Mayrath WRX, W13, STX2 8"/10"/13" Series

## **Parts included with this kit:**

1	Enclosed Hopper
2	Towing Hitch
3	Hopper Cable
4	Handle

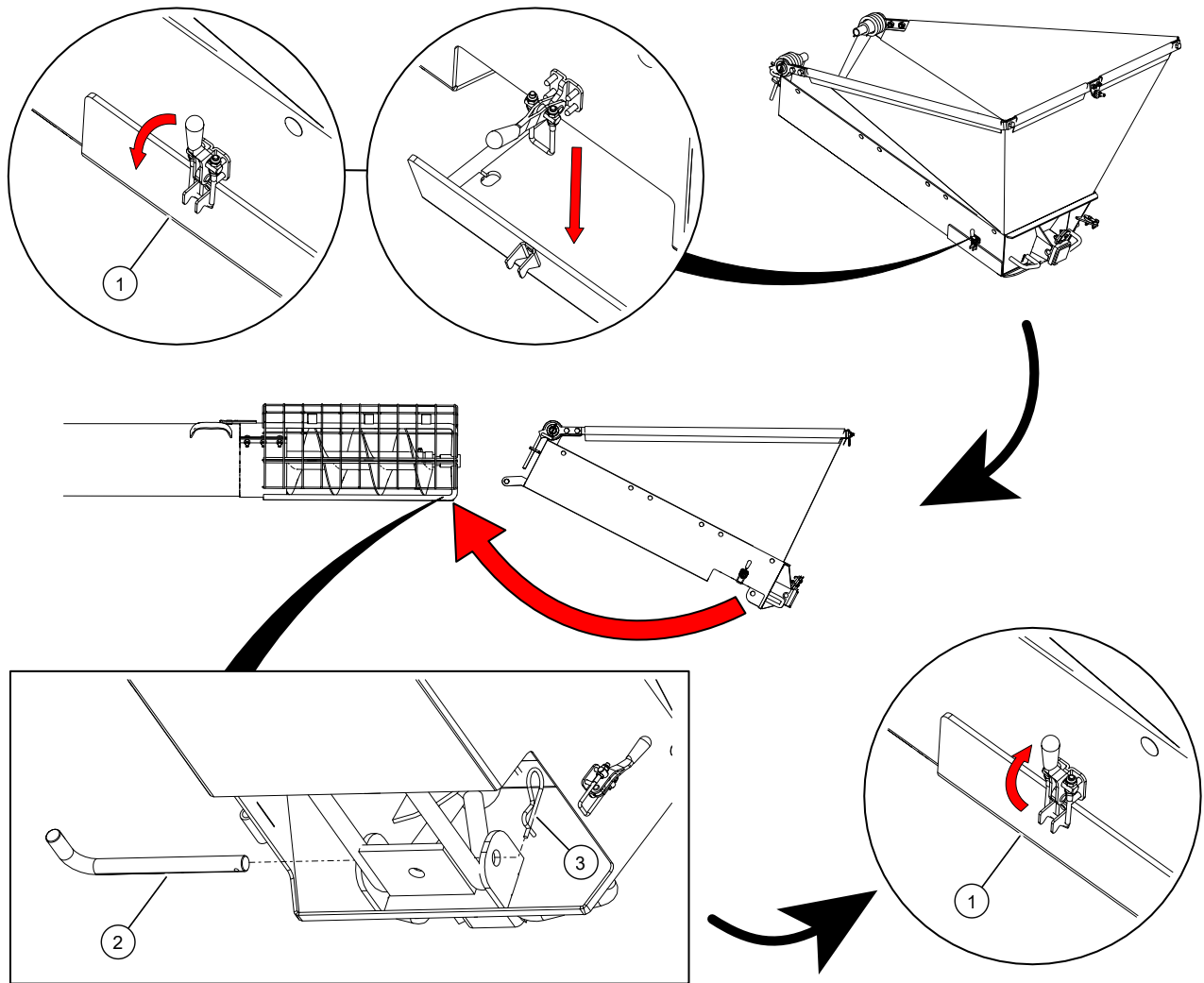


## Preparation

1. Lower the auger to full down position.
2. Chock the auger wheels to prevent rolling.
3. Turn off the auger and disengage the drive.
4. Support the tube with a sawhorse.

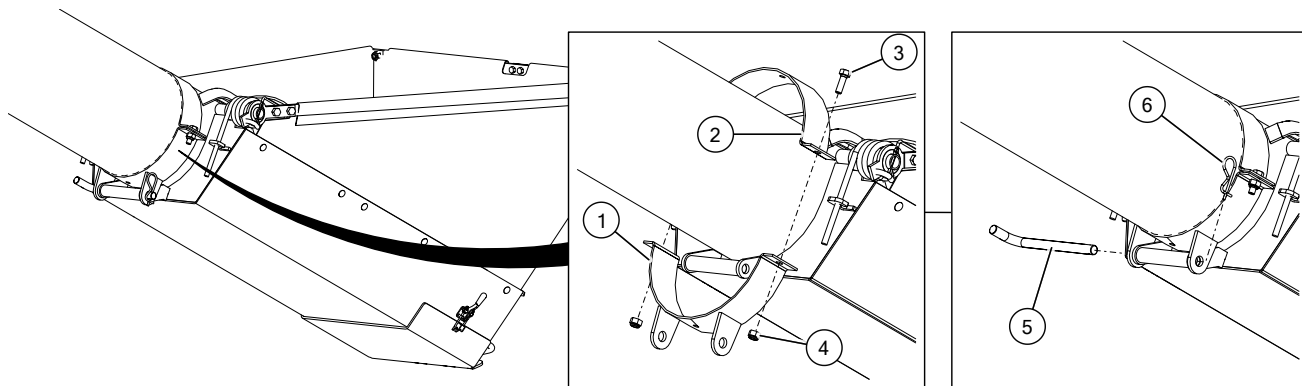
## Installing the Enclosed Hopper Kit

### Securing the Lower End of the Hopper



1	Cleanout Door	3	Grip Clip
2	Clevis Pin		

## Securing the Upper End of the Hopper

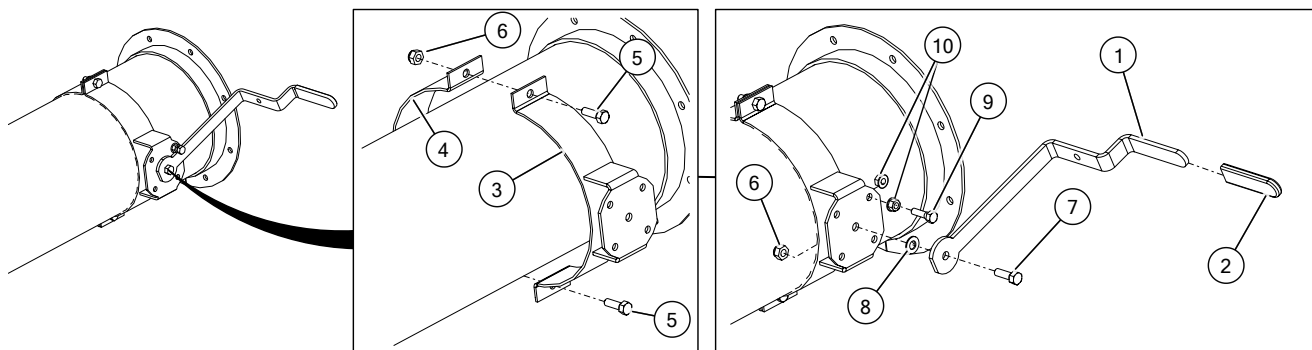


### Assembly Notes:

- Install the tube mount clamp loosely to the lower tube.
- After aligning and attaching, tighten clamp to tube.

1	Tube Mount Clamp	4	Locknut, 7/16"
2	Half Clamp	5	Clevis Pin
3	Bolt, 7/16" x 1-1/4"	6	Grip Clip

## Installing the Tension Handle

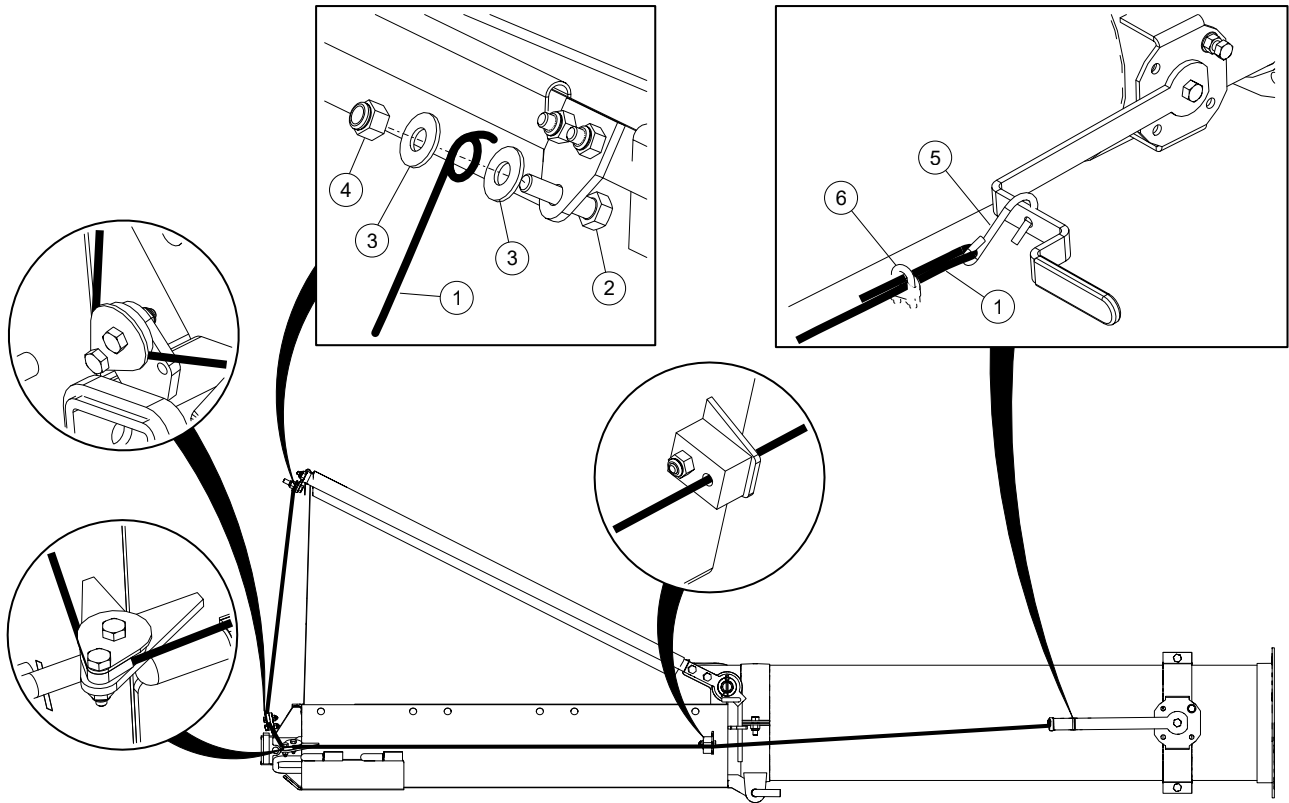


### Assembly Notes:

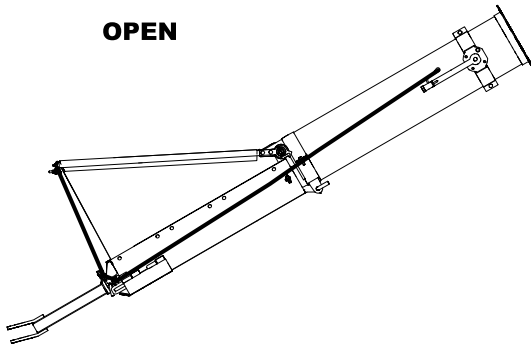
- Position the clamps approximately 8' up the tube.
- If necessary, adjust clamps lower down the tube to clear brackets and safety decals.

1	Tension Handle	6	Locknut, 7/16"
2	Rubber Handle Grip	7	Bolt, 7/16" x 1"
3	Handle Mount Clamp	8	Washer, 7/16"
4	Half Clamp	9	Bolt, 3/8" x 1-1/4"
5	Bolt, 7/16" x 1-1/4"	10	Whiz nut, 3/8"

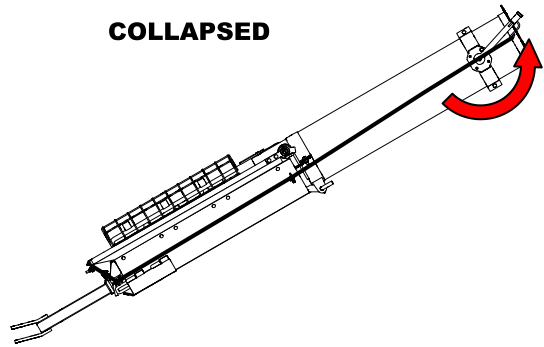
## Installing the Hopper Cable



**OPEN**



**COLLAPSED**

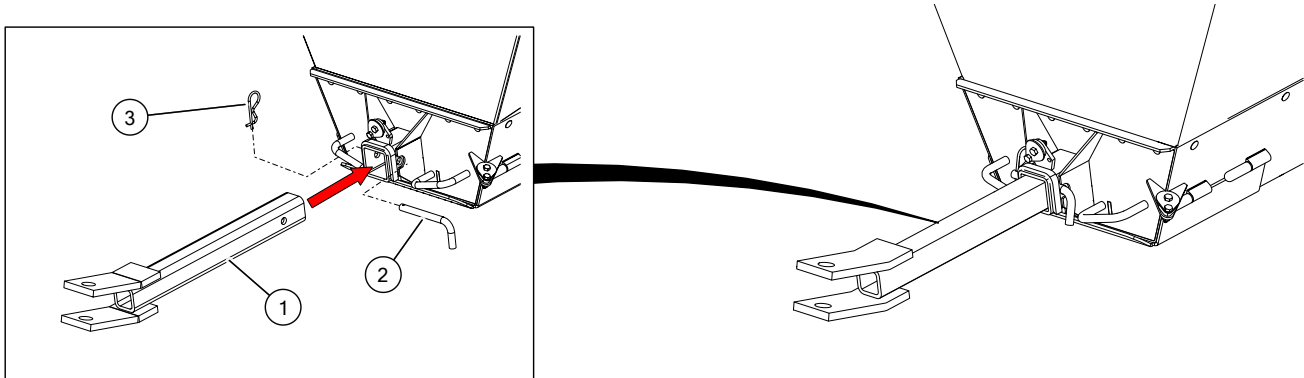


### Assembly Notes:

- Place the handle in the **open** position and pull the cable tight and attach to the handle.
- Ensure the live end of the cable is seated in the cradle of the cable clamp.
- Move the handle to the **collapsed** position. The canvas is now fully collapsed (below the top of the cage).

1	Hopper Cable	4	Locknut, 3/8"
2	Bolt, 3/8" x 1-1/2"	5	S-Hook
3	Washer, 3/8"	6	Cable Clamp, 1/4"

### Installing the Towing Hitch



1	Towing Hitch	3	Grip Clip
2	Hitch Pin		

## Connecting the Auger to the Towing Vehicle

Follow all safety precautions when transporting the auger and use a proper towing vehicle. See the auger's Operator Manual for details.

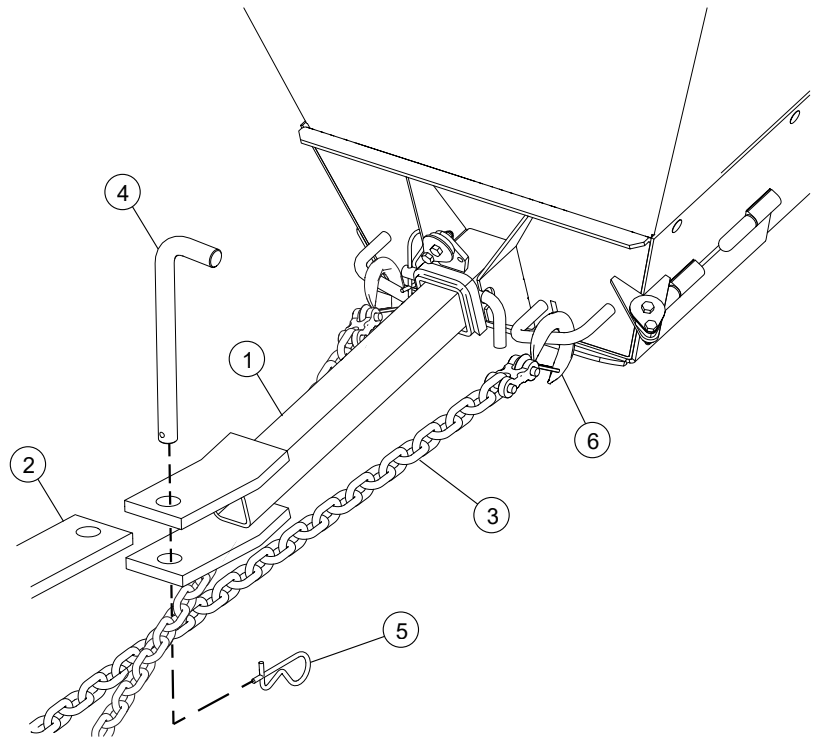
1. Place the auger in the full-down position. The frame should be in the full-down position with slight tension on the lift cable.
2. Place and secure the hitch pin using a clevis to tongue connection only.

**Important**

Use a type of hitch pin that will not allow the auger to separate from the towing vehicle.

3. Attach two chains to the hopper and cross the chain underneath the tow bar to prevent the auger from digging into the road surface or upsetting (should a breakaway occur). Replace the safety chain if one or more links or end fittings are stretched, broken, damaged, or deformed. The safety chain should have a load rating at least as high as the auger weight (refer to the auger's Operator Manual).
4. Use caution when transporting the auger over rolling terrain. In severe dips, the intake end may contact the ground.

1	Tow Bar
2	Tractor Drawbar
3	Safety Chain
4	Hitch Pin
5	Grip Clip
6	Safety Chain Hook



P.O. Box 39  
 Rosenort, Manitoba, R0G 1W0 Canada  
 Phone: (866) 467-7207 (Canada & USA) or (204) 746-2396  
 Fax: (866) 768-4852

Website: [www.aggrowth.com](http://www.aggrowth.com)  
 Email: [sales@grainaugers.com](mailto:sales@grainaugers.com)  
 ©Ag Growth International Inc. 2021, Printed in Canada