



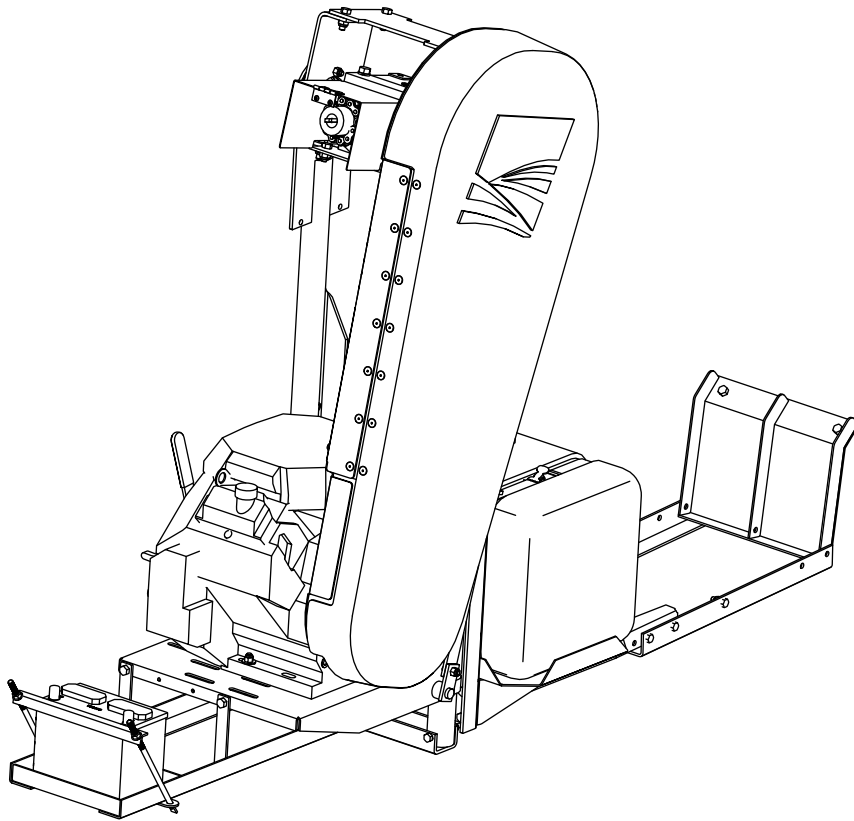
# **A466, A467, A468, A469, A470, A471**

## **WRX Motor Drive Kit**

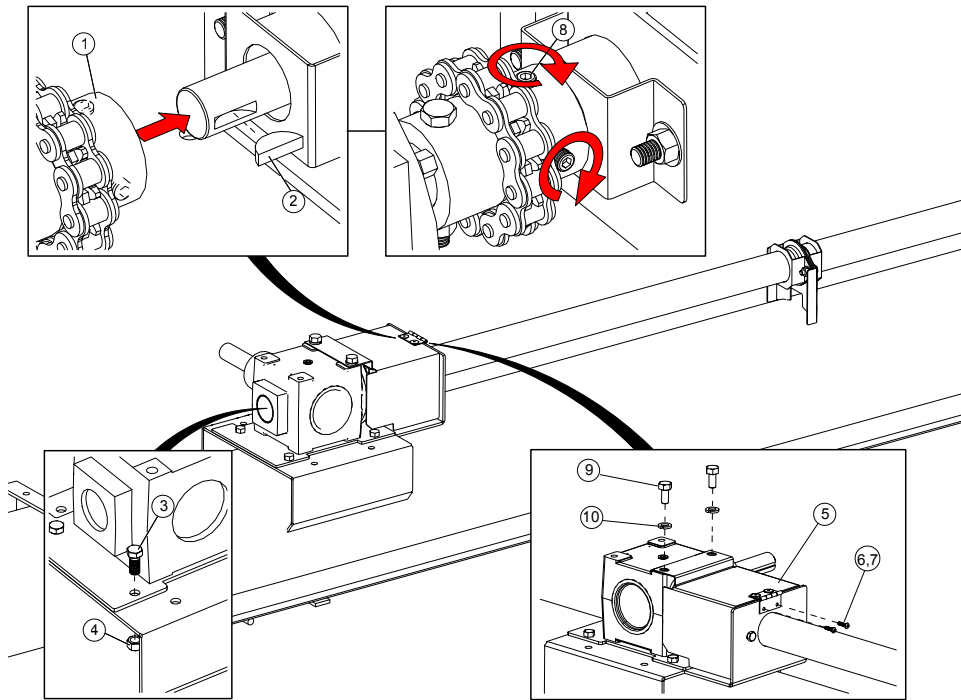
### **Portable Grain Auger Installation Instructions**

Applicable Models:

**WRX Series**



## Installing the Gearbox



### Assembly Notes:

- Check the gearbox oil level; gearbox should be half full. Use only EP90 lube oil and fill to HALF FULL only.
- The ends of the gearbox shaft and the driveshaft should be flush with the inside of the chain coupler sprockets.

If the driveshaft is too long or too short, do the following:

- If the driveshaft is too long, take up the extra length in the driveshaft connector(s).

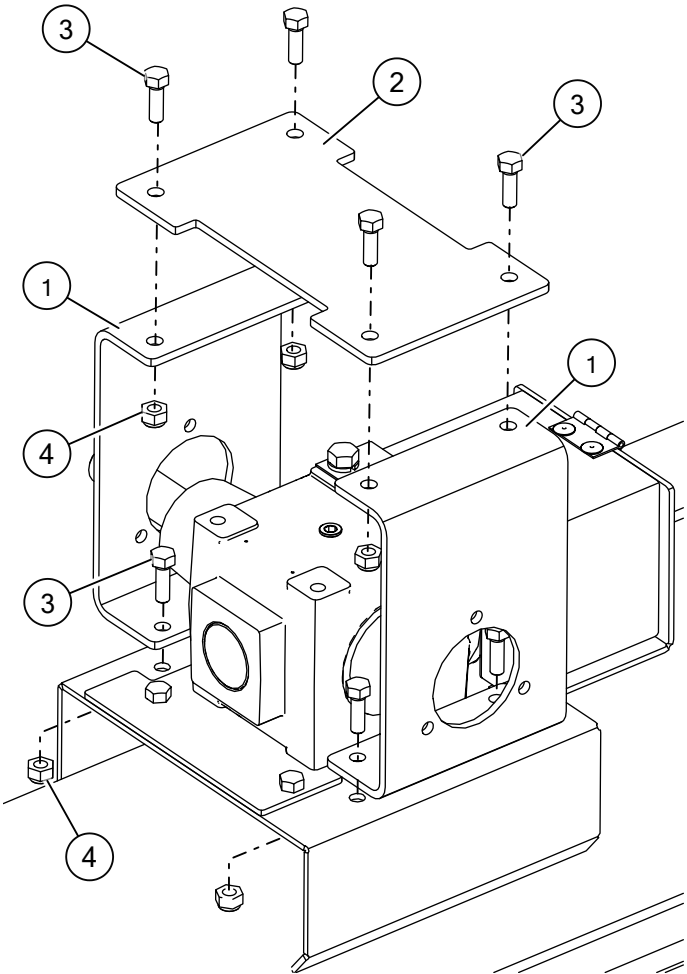
#### Note

There may be more than one driveshaft connector in the drive system.

- If the driveshaft is too short, remove the headcover, chain, sprocket, and lock collar at the top of the upper tube to adjust the two driveshafts.

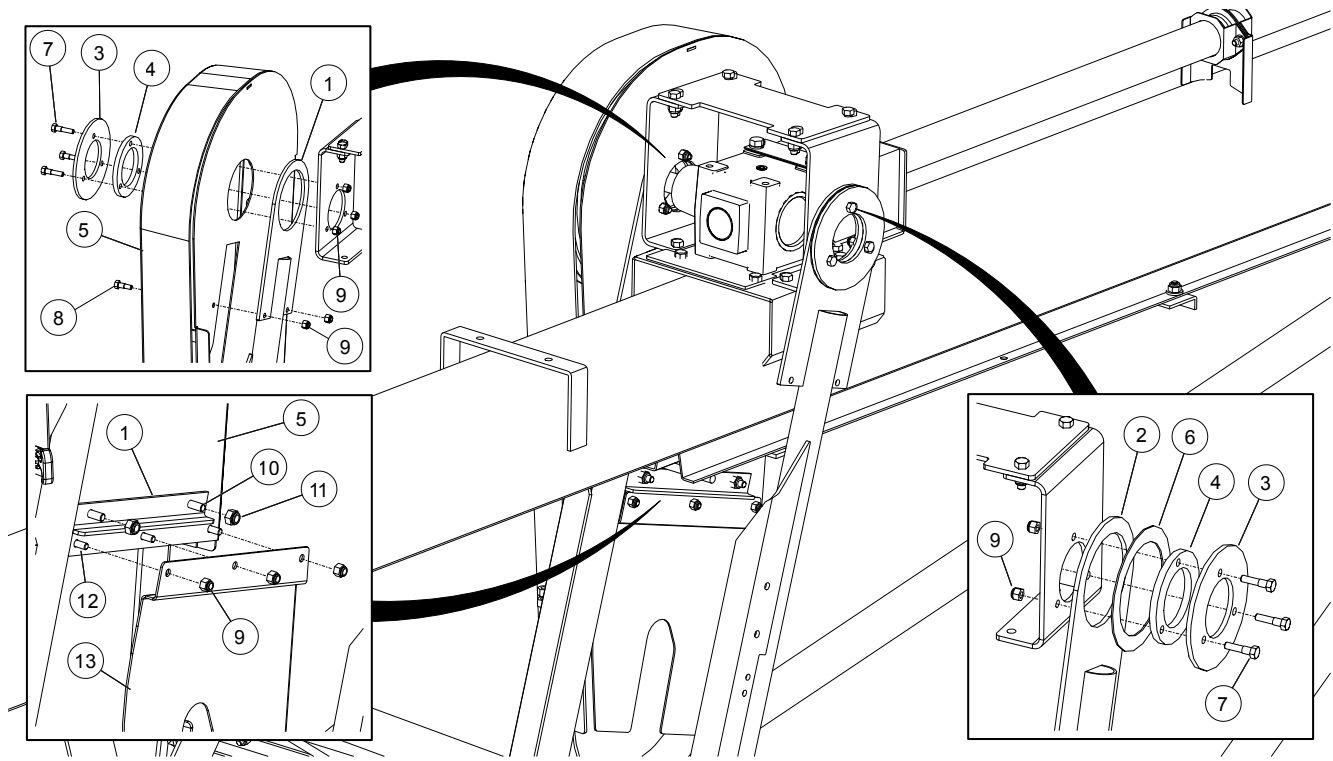
1	Gearbox Assembly	6	Bolt, #10 x 3/4"
2	Woodruff Key, 1/4" x 1"	7	Locknut, #10
3	Bolt, 7/16" x 1"	8	Set Screw, 3/8" x 3/8"
4	Locknut, 7/16"	9	Bolt, 1/2" x 1"
5	Chain Coupler Guard Assembly	10	Lock Washer, 1/2"

Installing the Gearbox Brackets



1	Connect Bracket
2	Top Cover Bracket
3	Bolt, 7/16" x 1-1/4"
4	Locknut, 7/16"

### Installing the Motor Mount Arms

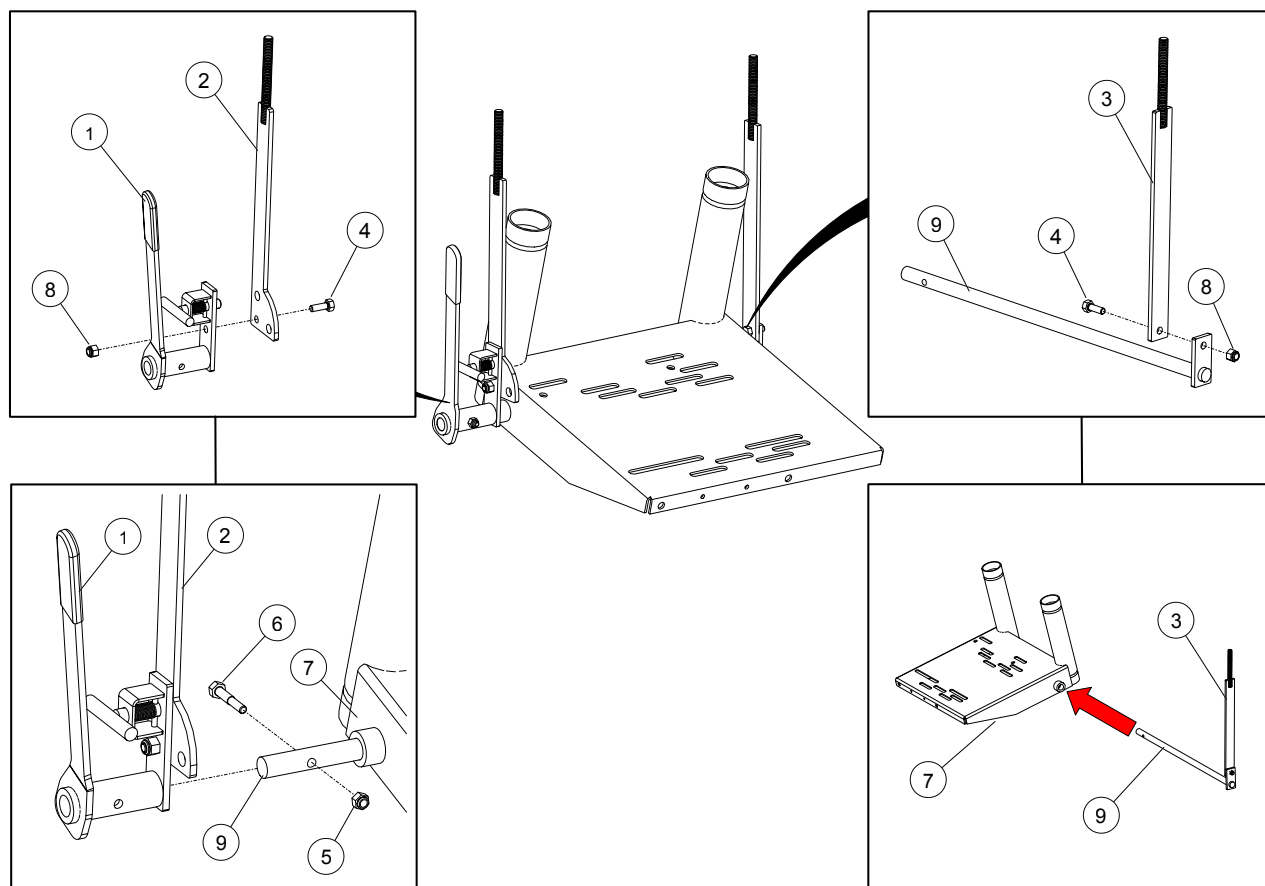


**Assembly Notes:**

- Do not overtighten the motor mount arms to the gearbox pivots.
- Ensure that the gearbox back plate is centered on the bolt plates.

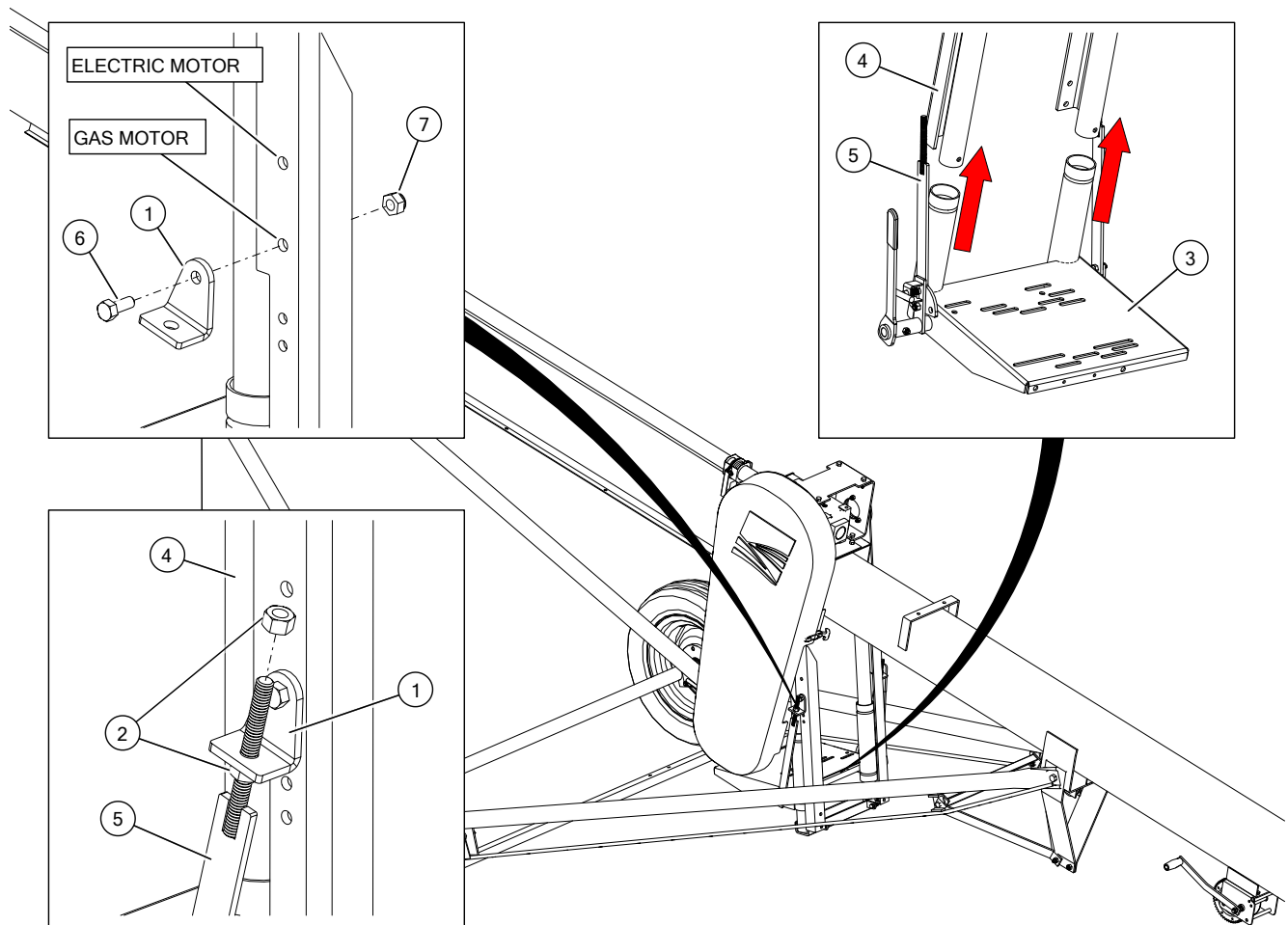
1	Motor Mount Arm, LH	8	Bolt, 3/8" x 1"
2	Motor Mount Arm, RH	9	Locknut, 3/8"
3	Bolt Plate, Large	10	Bolt, 7/16" x 1"
4	Bolt Plate, Small	11	Locknut, 7/16"
5	Poly Belt Guard Assembly	12	Bolt, 3/8" x 3/4"
6	Spacer	13	Base Back Plate (Electric Motors Only)
7	Bolt, 3/8" x 1-1/2"		

## Assembling the Motor Mount



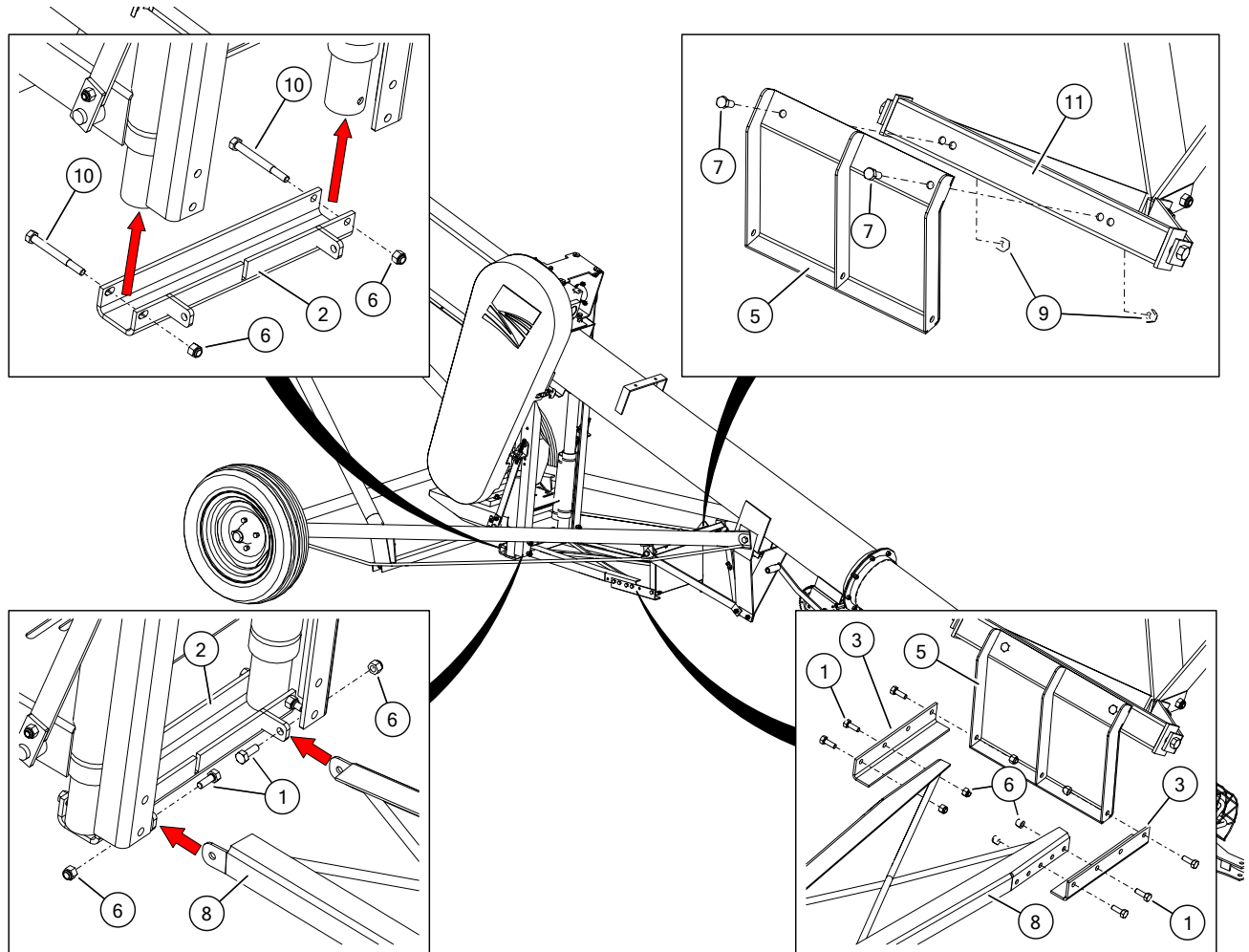
1	Belt Tensioner Handle Assembly	6	Bolt, 5/16" x 1-3/4"
2	Back Pivot Arm, RH	7	Motor Mount
3	Back Pivot Arm, LH	8	Locknut, 3/8"
4	Bolt, 3/8" x 1"	9	Pivot Rod
5	Locknut, 5/16"		

**Installing the Motor Mount**



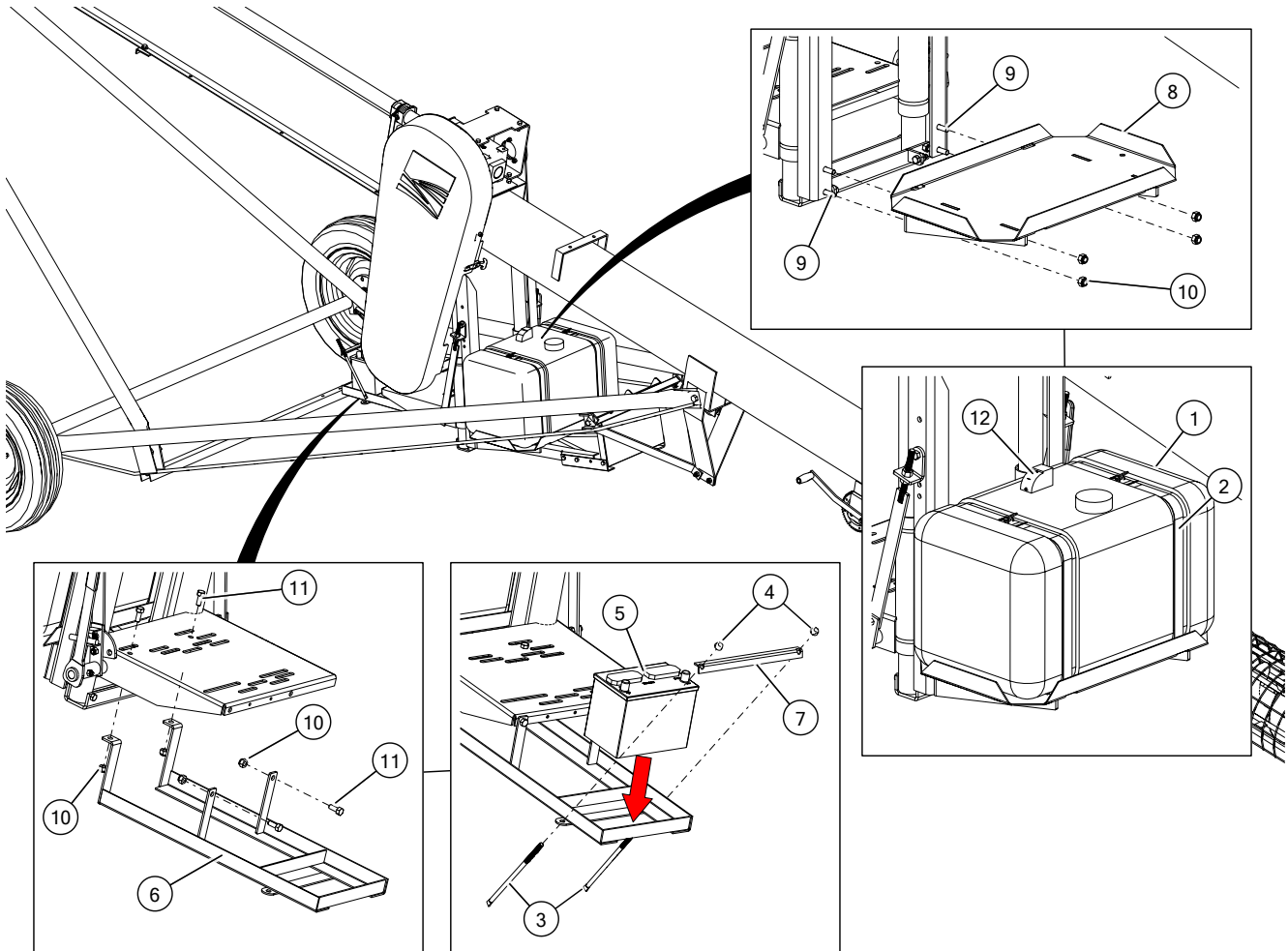
1	Pivot Arm Mount Bracket	5	Back Pivot Arm
2	Hex Nut, 1/2"	6	Bolt, 7/16" x 1"
3	Motor Mount	7	Locknut, 7/16"
4	Motor Mount Arm		

## Installing the Stabilizer Arms



1	Bolt, 3/8" x 1"	7	Bolt, 7/16" x 1"
2	Stopper Plate	8	Stability Arm
3	Adjust Stabilizer Bracket, Short	9	Locknut, 7/16"
4	Motor Mount	10	Bolt, 3/8" x 3-1/2"
5	Stabilizing Arm Mount	11	Short Crossmember
6	Locknut, 3/8"		

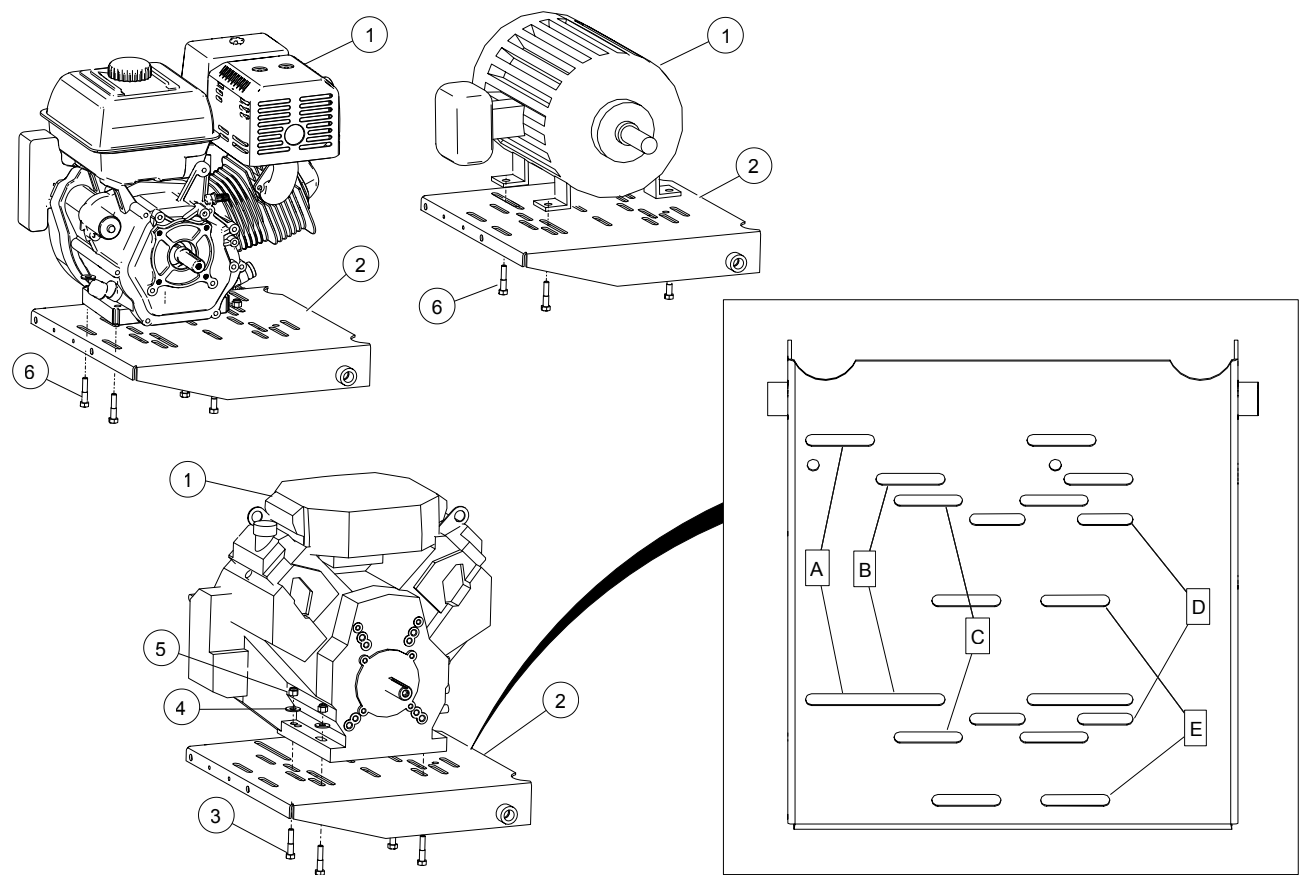
## Installing the Battery and Fuel Tank (Gas Motor Only)



1	Fuel Tank	7	Battery Hold Down Strap
2	Fuel Tank Straps	8	Fuel Tank Mount
3	Battery Holder Bolts	9	Bolt, 7/16" x 1-1/4"
4	Whiznut, 3/8"	10	Locknut, 7/16"
5	Battery	11	Bolt, 7/16" x 1"
6	Battery Mount	12	Brass Fitting



Installing the Motor

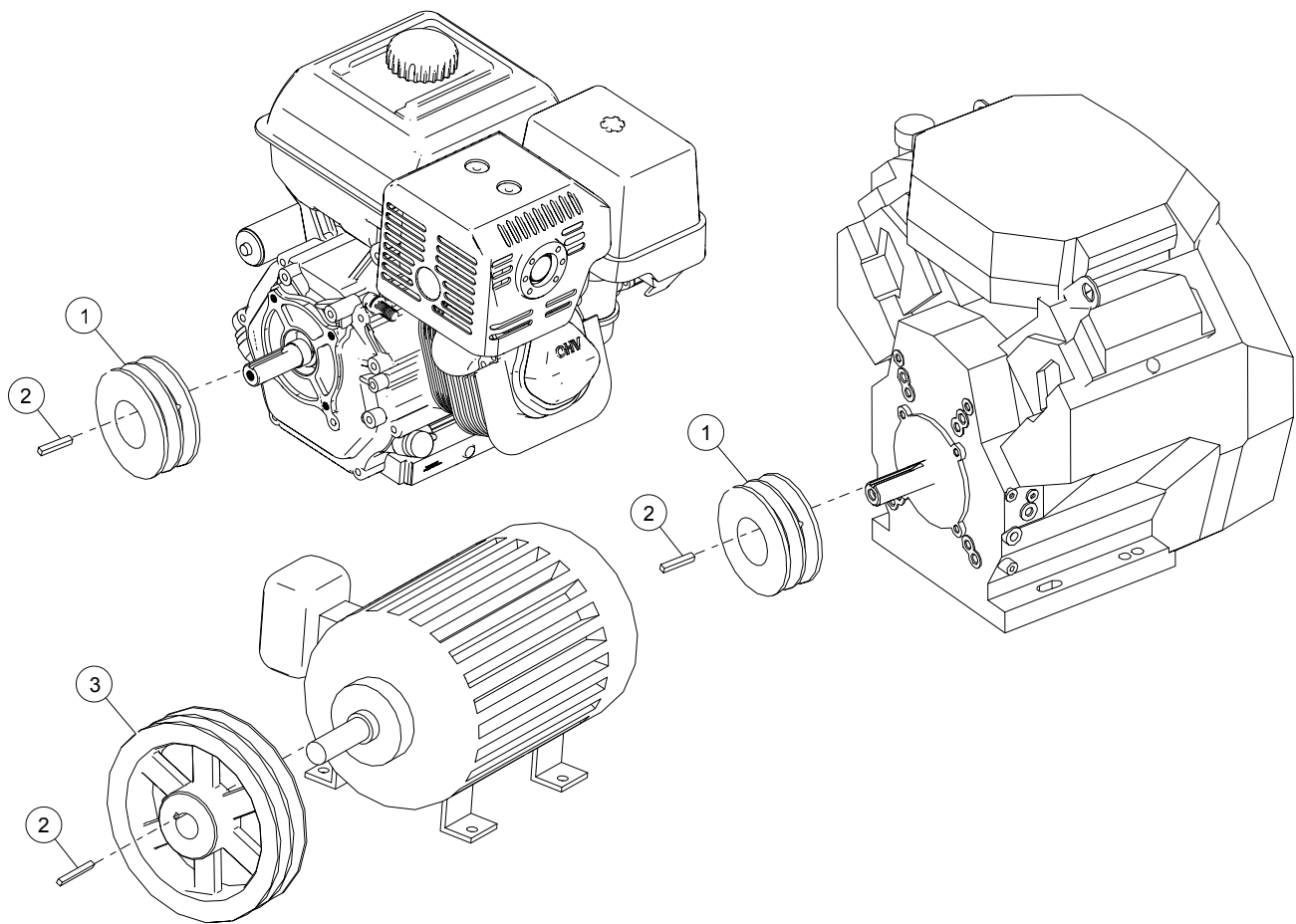


**Assembly Notes:**

- Install the exhaust pipe, muffler and muffler shield to the engine.
- Perform all the engine wiring.
- Run a fuel hose from the brass fitting to the fuel filter and secure with hose clamps.

1	Motor	A	Electric Motor, 15 HP — 20 HP
2	Motor Mount	B	Electric Motor, 7.5 HP — 10 HP
3	Bolt, 3/8" x 1-3/4"	C	Vanguard, 25 HP
4	Flat Washer, 3/8"	D	Honda, 20-22 HP
5	Locknut, 3/8"	E	Honda, 13 HP
6	Bolt (Not Supplied)		

Installing the Engine Pulley

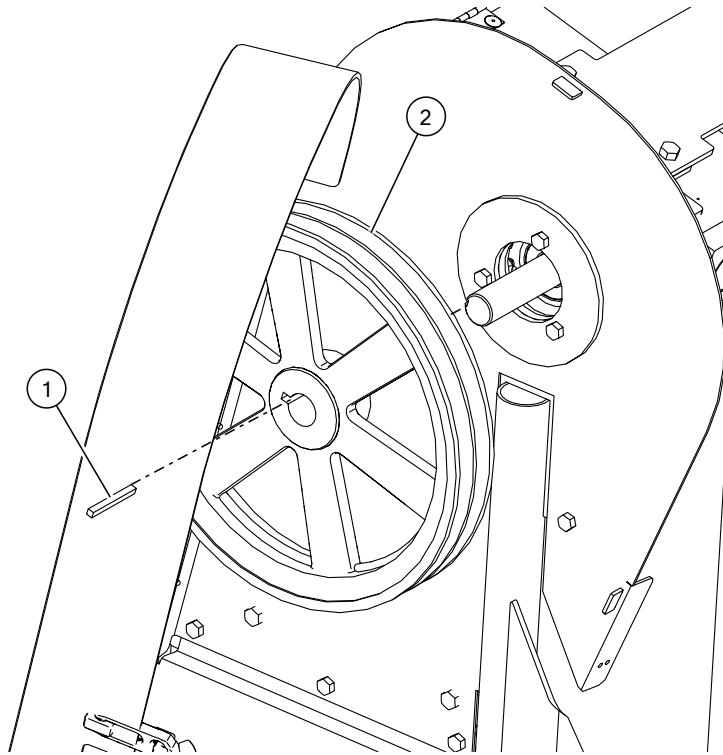


**Assembly Note:**

- The face of the motor shaft should be flush with the outside edge of the engine pulley.

1	Engine Pulley, Double (4-1/2" OD recommended)	3	Engine Pulley, Double (7-3/4" OD recommended)
2	Square Key, 1/4" x 1-1/2"		

## Installing the Gearbox Pulley

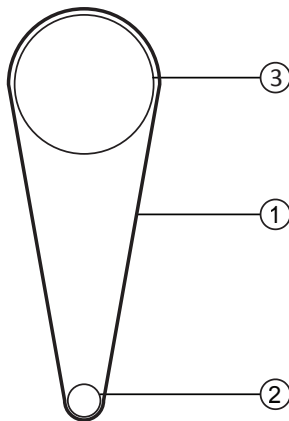


### Assembly Notes:

- Ensure that the hub set screws are toward the inside (facing auger tube).
- The face of the gearbox shaft should be flush with the outside edge of the gearbox pulley.
- Use a straight edge to align the motor pulley with the gearbox pulley.

1	Square Key, 1/4" x 2-1/2"
2	Gearbox Pulley, Double

## Installing the Belt



### Assembly Note:

- The belt must run straight. Check the alignment of the pulleys and adjust if necessary.

1	Belt
2	Engine Pulley
3	Gearbox Pulley



P.O. Box 39  
Rosenort, Manitoba, R0G 1W0 Canada  
Phone: (866) 467-7207 (Canada & USA) or (204) 746-2396  
Fax: (866) 768-4852

Website: [www.grainaugers.com](http://www.grainaugers.com)  
Email: [sales@grainaugers.com](mailto:sales@grainaugers.com)  
©Ag Growth International Inc. 2020, Printed in Canada