



A451/A452/A453/A454/A455

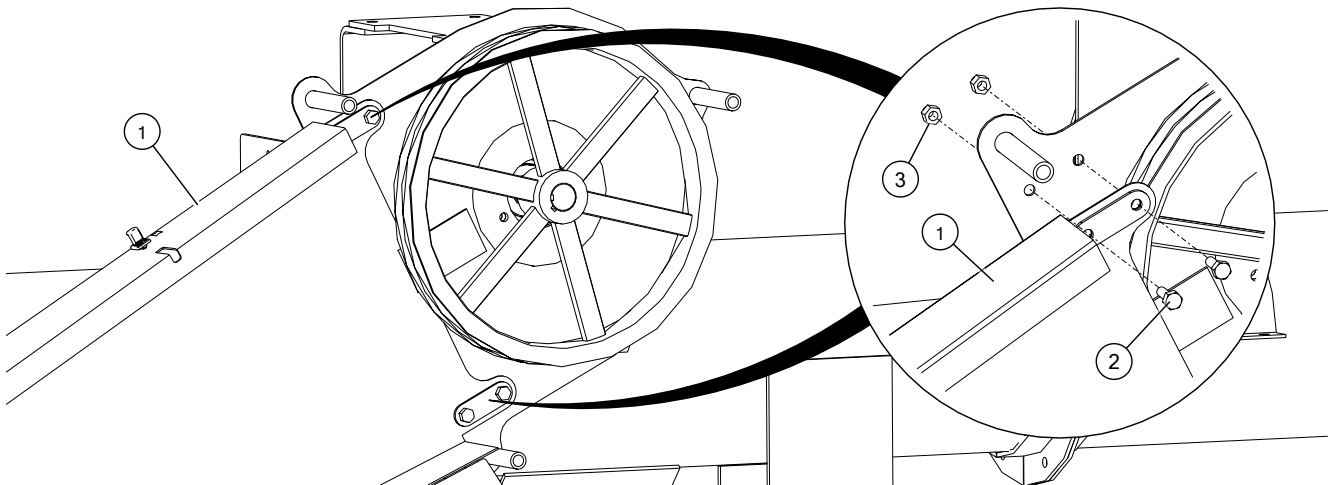
Manual Belt Engage Installation Instructions

Applicable Models:

STX2 & XTA Series

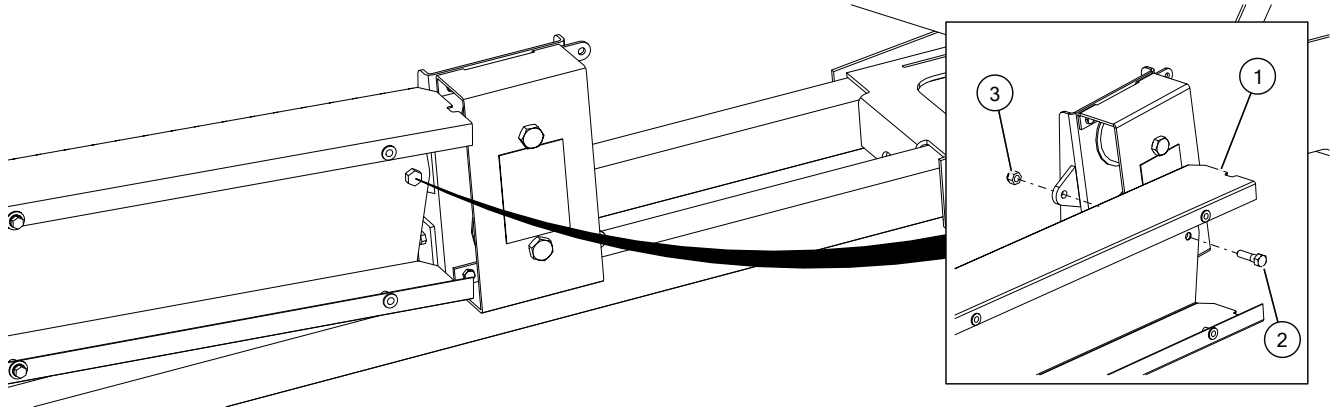
Install the Guard Assembly

31' Augers



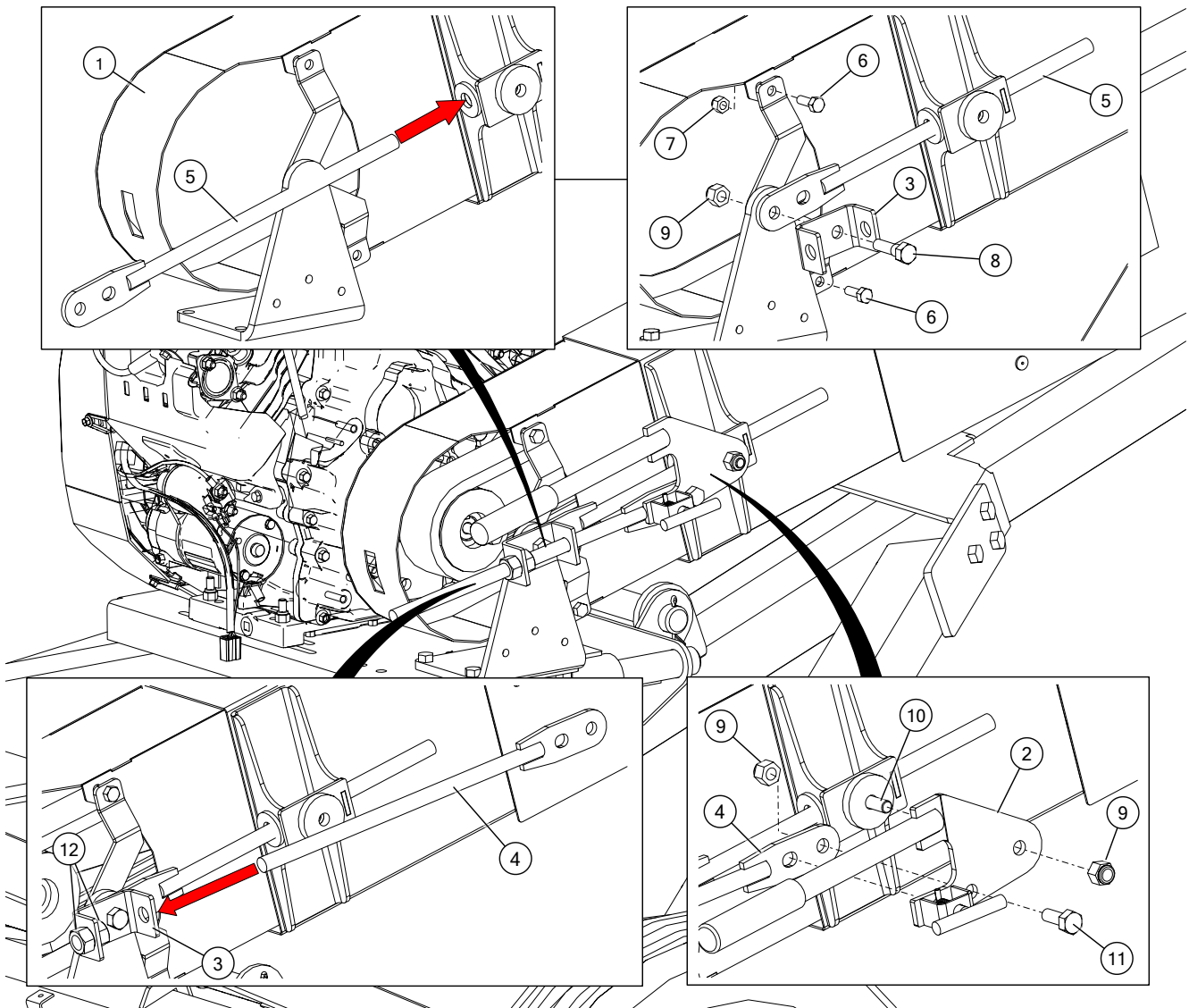
1	Guard Assembly	3	Locknut, 3/8"
2	Bolt, 3/8" x 1"		

36'/41'/46'/51' Augers



1	Bottom Guard Assembly	3	Locknut, 1/2"
2	Bolt, 1/2" x 1-3/4"		

Install the Engine Pulley Guard

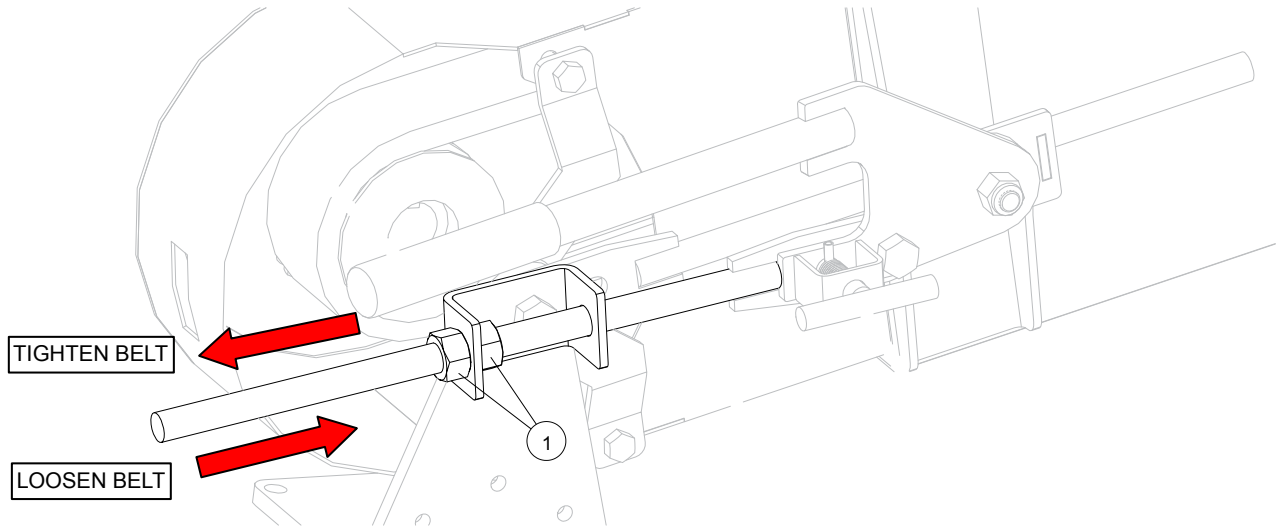


Assembly Note:

- Slip guard over the engine pulley and slide into the guard assembly.

1	Guard	7	Locknut, 3/8"
2	Manual Belt Engage Handle Assembly	8	Bolt, 1/2" x 1-3/4"
3	Manual Belt Engage Mount Bracket	9	Locknut, 1/2"
4	Manual Belt Engage Threaded Rod	10	Bolt, 1/2" x 1-1/2"
5	Manual Belt Engage Guide Rod	11	Bolt, 1/2" x 1-1/4"
6	Bolt, 3/8" x 1"	12	Hex Nut, 5/8"

Tension the Belt



Assembly Note:

- Use the two hex nuts to apply tension to the drive belt prior to closing the guard cover.
- Close the guard using the rubber draw latches after the belt has been tensioned.

1	Hex Nut, 5/8"
---	---------------



P.O. Box 39
 Rosenort, Manitoba, R0G 1W0 Canada
 Phone: (866) 467-7207 (Canada & USA) or (204) 746-2396
 Fax: (866) 768-4852

Website: www.grainaugers.com
 Email: sales@grainaugers.com
 ©Ag Growth International Inc. 2020, Printed in Canada