



A317/A318 Lighting Kit Portable Grain Auger Installation Instructions

Applicable Models:

Westfield STX2, Westfield STX, AGI XTA, Hutchinson STX2, Mayrath STX2, Wheatheart R



Read and understand the safety information in the Portable Grain Auger manuals before proceeding. Read and understand the instructions in this manual before installing the Lighting Kit. Fully disengage and lock out the Portable Grain Auger before installing.

Pre-Installation Instructions

The lighting kit consists of one flood lamp, two mini-flood lamps, a wiring harness, a fused light switch box, cable ties, cable P-clamps, mounting brackets, and hardware.

- Familiarize yourself with all the required hardware.
- Arrange all parts for easy access.

Lighting Kit Installation

Install the Discharge-area Lamp

1. Attach the flood lamp to the track stop with a bolt, washer, and locknut.
2. Plug the wiring harness connector into the flood lamp connector. Ensure that the connectors are fully engaged.
3. Run the wiring harness down the tube to the location of the engine-area lamp.
 - **For STX2/XTA Series:** Travel through the opening in the bearing brackets.
 - **For STX/R Series:** Travel along the driveshaft guards and fasten it to the guard straps with P-clamps using the existing strap screws.

Install the Engine-area Lamp

1. Attach a lamp bracket.
 - **For 31/36/41 Models:** Attach a lamp bracket to the tube weldment above the engine with a 7/16" x 1" bolt and locknut.
 - **For 46/51 models:** Attach a lamp bracket to the tube flange using existing hardware.
2. Attach a mini flood lamp to the bracket using a bolt, washer, and locknut.

3. Plug the wiring harness connector into the mini flood lamp connector. Ensure that the connectors are fully engaged.
4. Run the wiring harness down the tube to the gearbox-area lamp.
 - **For STX2/XTA Series:** Travel through the opening in the bearing brackets.
 - **For STX/R Series:** Travel along the driveshaft guards and fasten it to the guard straps with P-clamps using the existing strap screws.

Install the Intake-area Lamp

1. Secure the remaining lamp bracket to the gearbox:
 - **For 8" Models:** Use a 3/8" x 1" bolt and lockwasher.
 - **For 10" Models:** Use a 1/2" x 1" bolt and lockwasher.
2. Attach the second mini flood lamp to the bracket using a bolt, washer, and locknut.
3. Plug the wiring harness connector into the mini flood lamp connector. Ensure that the connectors are fully engaged.
4. Run the wiring harness down the lower frame to the engine.
 - **For STX2/XTA Series:** Secure using P-clamps and Tek screws.
 - **For STX/R Series:** Secure using cable ties as required.

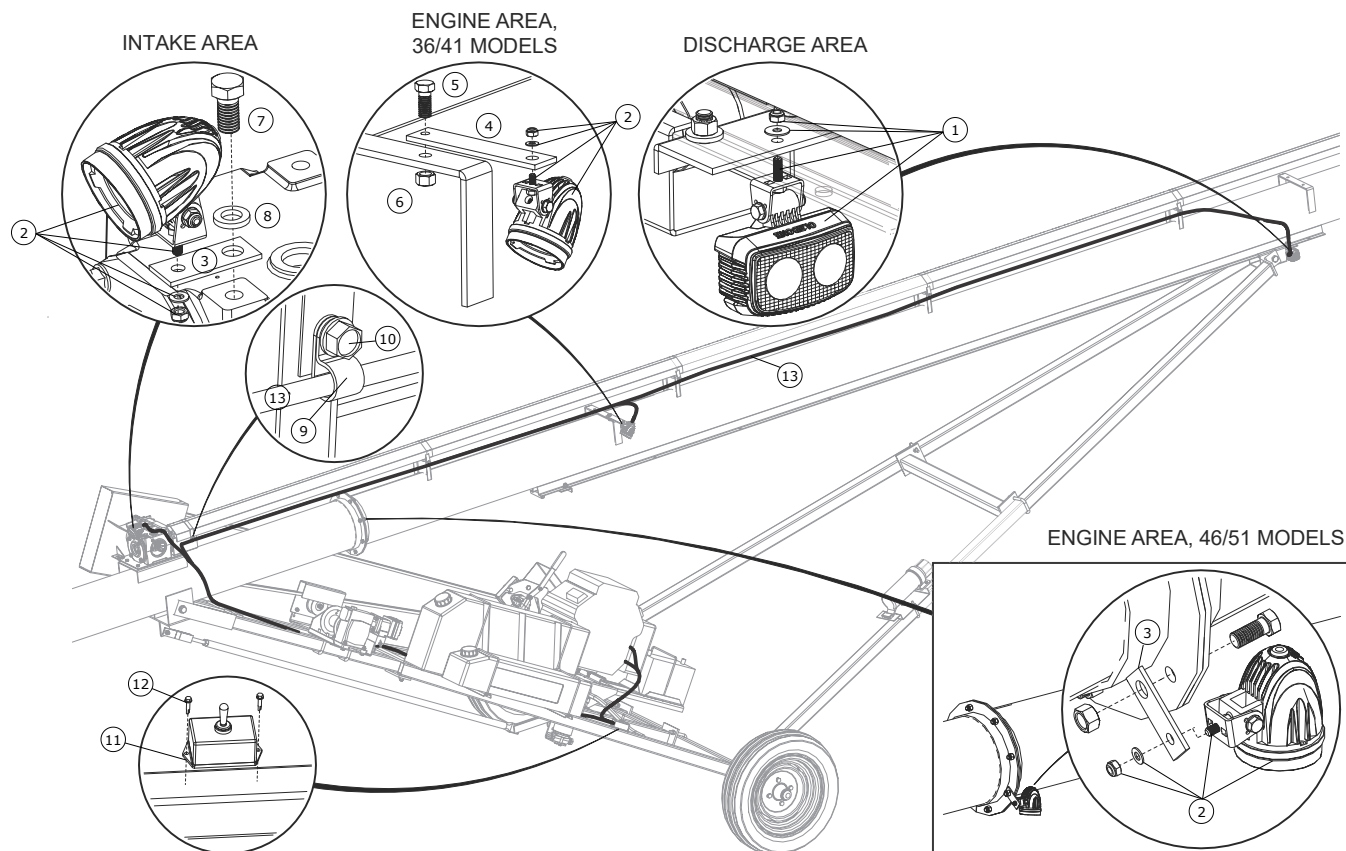
Install the Wiring Harness and Switch Box

1. Connect the wiring-harness eyelet (white wire) to the motor frame (ground).
2. Connect the butt splice to the motor power (positive).

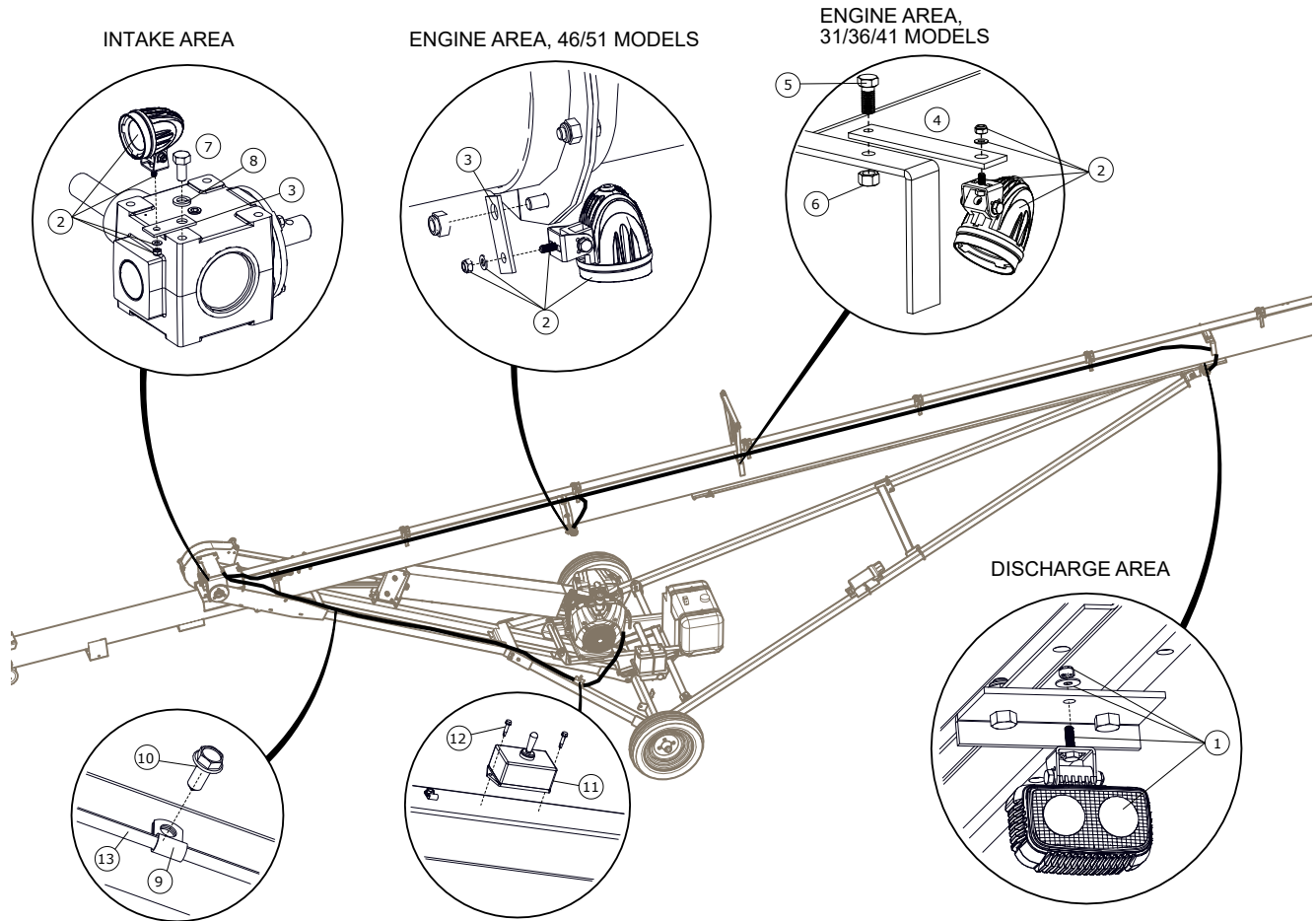
Note

If no motor power lead is available to connect the butt splice it may be necessary to use the provided tap splice connector to draw power from another power or accessory wire. Ensure all connections are fused appropriately.

3. Install the switch box to the lower frame arm with two #8 x 3/4" Tek screws.

Figure 1. STX/R Series

1	Flood lamp (Includes hardware)	8	Lockwasher, 3/8" (for 8" models)
2	Mini flood lamp (Includes hardware)		Lockwasher, 1/2" (for 10" models)
3	Lamp bracket, short	9	P-clamp
4	Lamp bracket, long	10	Tek screw, #14 x 5/8"
5	Bolt, 7/16" x 1"	11	Switch box
6	Locknut, 7/16"	12	Tek screw, #8 x 3/4"
7	Bolt, 3/8" x 1" (for 8" models)	13	Wiring harness
	Bolt, 1/2" x 1" (for 10" models)		

Figure 2. STX2/XTA Series

1	Flood lamp (Includes hardware)	8	Lockwasher, 3/8" (for 8" models)
2	Mini flood lamp (Includes hardware)		Lockwasher, 1/2" (for 10" models)
3	Lamp bracket, short	9	P-clamp
4	Lamp bracket, long	10	Tek screw, #14 x 5/8"
5	Bolt, 7/16" x 1"	11	Switch box
6	Locknut, 7/16"	12	Tek screw, #8 x 3/4"
7	Bolt, 3/8" x 1" (for 8" models)	13	Wiring harness
	Bolt, 1/2" x 1" (for 10" models)		

AGI is a leading provider of equipment solutions for agriculture bulk commodities including seed, fertilizer, grain, and feed systems with a growing platform in providing equipment and solutions for food processing facilities. AGI has manufacturing facilities in Canada, the United States, the United Kingdom, Brazil, South Africa, India and Italy and distributes its products globally.



P.O. Box 39, Rosenort, Manitoba, R0G 1W0 Canada
P 866.467.7207 (Canada & USA) or 204.746.2396 | F 866.768.4852 | E sales@grainaugers.com

AGGROWTH.COM aggrowthintl
©Ag Growth International Inc. 2021 | Printed in Canada