

BUCKET ELEVATOR THE WORK HORSE

TRAMCO 



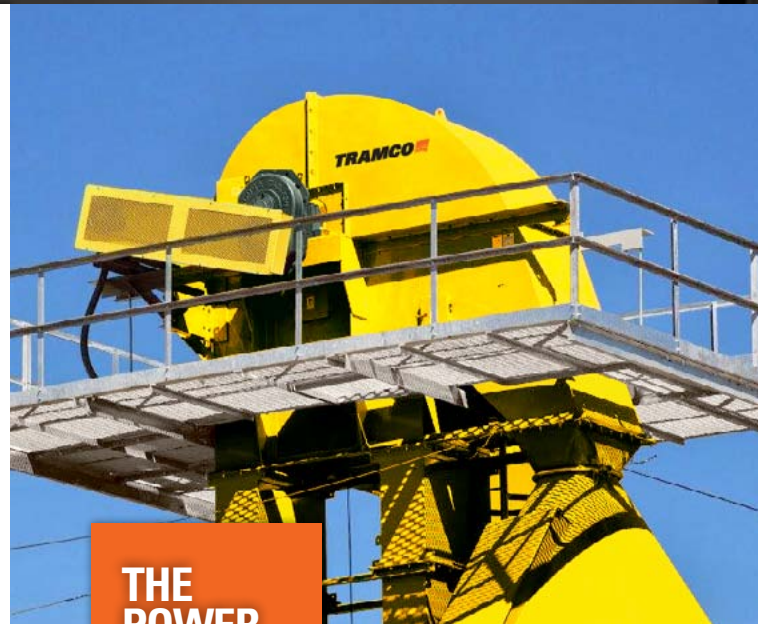
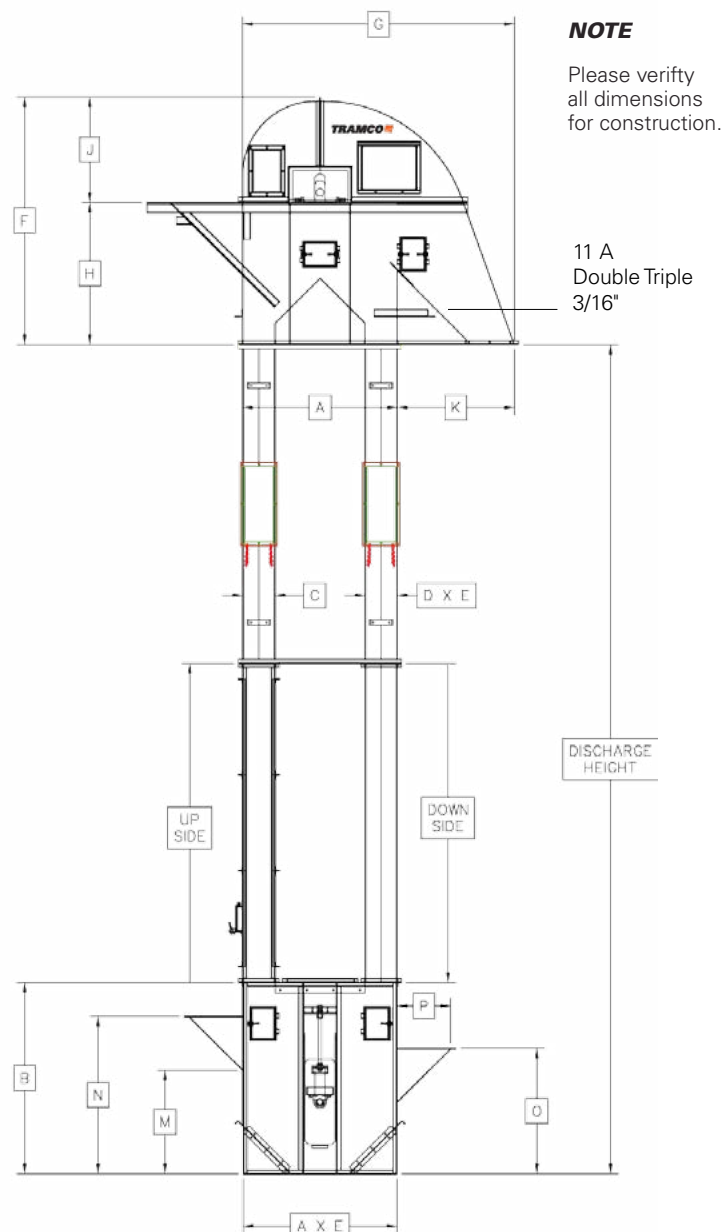
**THE HIGHEST
PERFORMANCE
AT THE BEST VALUE!**

Designed & Engineered for Versatility.

**QUALITY,
DEPENDABILITY
& SERVICE**

HOW TO SELECT A BUCKET ELEVATOR

- Capacity is based on 75% cup loading.
- HP is based on 100% cup fill.
- Leg size is coded to show bucket and pulley dimensions.
Example: Leg size 14842 refers to a 14" X 8" bucket with a 42" dia. head pulley.



**THE
POWER
TO MOVE**

Elevators depend on the efficient movement of grain, TRAMCO designs and manufactures the materials handling equipment to meet those needs.

TRAMCO products have the "Power To Move" grain efficiently and profitably. Our experience has been gained from over a century of supplying quality equipment to the grain industry. For the best in materials handling equipment rely on TRAMCO, the complete "Power to Move" product and accessory lines.

Capacity Bu/Hr	Size	Belt Speed FPM	Pulley RPM	Cup Spacing	A	B	C	D	E	F	G	H	J	K	M	N	O	P
Dimensions in Inches																		
3,000	9630	545	67	8	52	60	28	12	18	72	84	38	34	32	35	51	41	16
5,000	12630	545	67	7	52	60	28	12	18	72	84	38	34	32	35	51	41	16
7,500	14736	620	64	8	58	72	34	12	18	74	102	47	47	44	39	67	55	20
10,000	16742	675	60	10	67	72	39	14	22	102	113	59	43	46	43	67	55	24
12,500	16842	626	60	10	67	72	39	14	22	102	113	59	43	46	43	70	58	24
15,000	18848	720	56	10	73	72	45	14	28	112	128	66	46	55	46	70	58	24
20,000	22848	720	56	9	73	72	45	14	28	112	128	66	46	55	46	70	58	24
25,000	168D48	720	56	10	73	72	45	14	48	112	128	66	46	55	46	70	58	24
30,000	188D48	720	56	10	73	72	45	14	48	112	128	66	46	55	46	70	58	24
40,000	188T48	720	56	10	73	72	45	14	65	112	128	60	46	55	46	70	58	24
50,000	208T60	720	56	10	73	72	45	16	72	112	128	66	46	55	46	70	58	24

Capacity MT/Hr	Size	Belt Speed m/s	Pulley RPM	Cup Spacing, mm	A	B	C	D	E	F	G	H	J	K	M	N	O	P
Dimensions in millimeters																		
81	9630	2.77	67	203	1321	1524	711	305	457	1829	2134	965	864	813	889	1295	1041	406
136	12630	2.77	67	178	1321	1524	711	305	457	1829	2134	965	864	813	889	1295	1041	406
203	14736	3.15	64	203	1473	1829	864	305	457	1880	2591	1194	1194	1118	991	1702	1397	508
271	16742	3.43	60	254	1702	1829	991	356	559	2591	2870	1499	1092	1168	1092	1702	1397	610
339	16842	3.18	60	254	1702	1829	991	356	559	2591	2870	1499	1092	1397	1092	1778	1473	610
407	18848	3.66	56	254	1854	1829	1143	356	711	2845	3251	1676	1168	1397	1168	1778	1473	610
543	22848	3.66	56	229	1854	1829	1143	356	711	2845	3251	1676	1168	1397	1168	1778	1473	610
678	168D48	3.66	56	254	1854	1829	1143	356	1219	2845	3251	1676	1168	1397	1168	1778	1473	610
814	188D48	3.66	56	254	1854	1829	1143	356	1219	2845	3251	1676	1168	1397	1168	1778	1473	610
1,085	188T48	3.66	56	254	1854	1829	1143	356	1651	2845	3251	1524	1168	1397	1168	1778	1473	610
1,357	208T60	3.66	56	254	1854	1829	1143	406	1829	2845	3251	1676	1168	1397	1168	1778	1473	610

NOTE Capacities in MT/hr are based on wheat at 0.77 MT/m³

TRAMCO MODEL BUCKET ELEVATORS

3,000 - 50,000 BPH (81 - 1357 MT/HR)

HEAD BEARINGS	All pillow block design; ball, double row spherical and SAF	CONSTRUCTION	Boot - 7 GA or 1/4" Head - 11 GA Casing - 11 GA Double & Triple 3/16" heads
TAKE-UPS	Screw type take-ups with heavy duty pillow block bearings	CASINGS	10' towered continuously jig-welded. Continuously welded end flanges
SHAFTS	1045 turned, ground and polished special alloy steel	FINISH	Powder Coat
BELTING	Static conductive, super oil resistant and fire retardant rubber covered belt	DRIVE MOUNT	Motor support base is standard. Drive Guard, standard
PULLEYS	Balanced crowned face welded steel	VENTS	Blowout vent at head, standard
LAGGING	Slide lag	ACCESS	10' inspection section with three inspection ports, head access and inspection doors
BUCKETS	Heavy duty, high density, non-sparking polyethylene	THROAT WIPER	Adjustable rubber throat wiper plate
WEAR POINTS	Urethane lined discharge	CLEAN-OUT	Hand type clean-out slides



- Swivel hoisting beams
- Casing pressure relief panels
- Wing type boot pulley
- Knee roller
- Gravity take-ups
- Bearing temperature monitor
- Motion detection monitor
- Zero speed switch
- Belt tracking switch
- Ceramic or urethane lined tapered discharge and boot hopper
- Clamp type belt splice
- Rack and pinion clean-out slides with hand wheels and anti-friction bearings
- Service, distributor and rest platforms
- Ladder
- Safety cage
- Extra boot hopper
- Transition to distributor (lined or standard)
- Valves
- Gates
- Distributors

REMEMBER

Do not operate equipment with safety devices removed

A unique combination of design, engineering, proper component selection, manufacturing and service after the sale makes TRAMCO Conveyors the first choice for consulting and supply in bulk material handling situations. TRAMCO delivers product for various industries such as chemical, coal, food and grain, mining, plastic, pulp, rubber and paper, or solid waste and recycling. Buying TRAMCO ensures expertise, knowledge, manufacturing know-how and the comfort that comes with every TRAMCO conveyor.

TRAMCO-EUROPE LTD
 Mendham Business Park
 Hull Road, Saltend, Hull, HU12 8DZ
P +44-1482-782666
F +44-1482-793920
E sales@tramcoeurope.co.uk
 tramcoeurope.com

EURO-TRAMCO, B.V. (Sales)
 Spacelab 47 D
 3824MR Amersfoort, The Netherlands
P +31-33-4567033
F +31-33-4558149
E Hans@TRAMCO-europe.com
 tramcoeurope.com



1020 East 19th Street North Wichita, Kansas USA 67214
 316.264.4604 sales@tramcoinc.com tramcoinc.com

