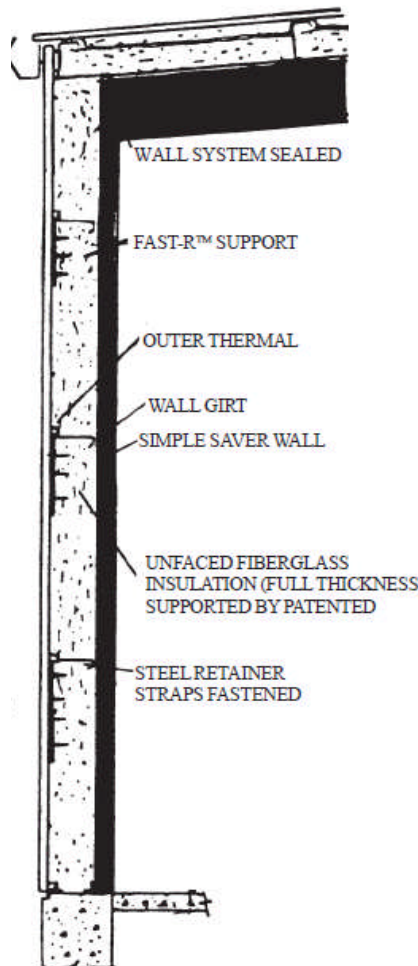


Thermal Efficiency System



Sentinel's Thermal Efficiency System consists of a network of fastened steel straps supporting large sections of high-strength vapor barrier fabric, each designed to fit a specific ceiling or wall section. Various insulation types can then be installed on the ceiling system from either the top or underside to obtain virtually any desired insulation R-Value.

The Thermal Efficiency System provides a highly efficient energy envelope for the building at a very low installation cost, and solves problems associated with other methods by eliminating seams which results in a labor saving insulation and a superior in-place vapor barrier.



R-VALUES	
WALL SYSTEM	
TOTAL R	INSULATION THICKNESS (INCHES)
R-10	3
R-11	3 1/2
R-13	4
R-16	5
R-19	6
R-25	8
R-30	9 1/2

R-VALUES		
ROOF SYSTEM		
Total R	Lower Layer (inches)	Upper Layer (inches)
R-19	6	-
R-20	3	3
R-22	3 1/2	3 1/2
R-25	8	-
R-26	5	3
R-26	4	4
R-29	5	4
R-29	6	3
R-30	9 1/2	-
R-30	6	3 1/2
R-32	6	4
R-35	8	3
R-36	8	3 1/2
R-39	8	4
R-40	9 1/2	3
R-43	9 1/2	4