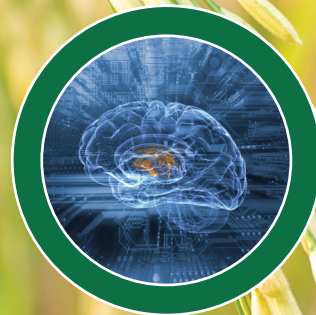




ALPHA SERIES



Linux



- 16200 Pixels Multichromatic Cameras ♦
- Fast response Maglev ejectors with life of 10 Billion cycles ♦
- Impurity & Broken analysis with Online Sorting Preview ♦
- Reverse Sorting & Size Sorting ♦
- Optional 4 time sorting for better carry-over ratio ♦
- 15" Screen with Linux based Self Diagnosis System. ♦
- High Performance to Cost ♦

Multi Chrome Cameras:

- Multichromatic **16200 Pixel High Speed cameras** with excellent scanning rate.
- Double Vision Scanning System to detect the slightest difference up to 0.01mm
- Equipped for Reverse sorting, 4 time sorting & Size Sorting Methodology.

Technology:

- **6th Generation FPGA** Processing with Auto Intelligent Digital Image Sorting Technology.
- Product scanning speed of 32500 lines/sec.
- Auto calibration feature with Auto setting & Auto sorting control.
- High Brightness Adjustable Cool white LED Lighting systems with life span of 50,000 Hrs.
- Self-diagnosis and memorization of different scanned products.

Graphics Panel:

- 15 "Linux based user friendly Graphic user interface (GUI) with Online Support System.
- Image capturing systems with 200 profiles storage that enables quick machine settings.

Maglev Ejectors:

- Maglev technology Ejectors with fast response time of 0.8 milliseconds, 3.8 mm Nozzle and a life time of 10 Billion Cycles.
- Upgraded with Quality ejector Feedback system that can monitor the ejections.

Chutes:

- Anodized chutes having smooth surface to facilitate the even flow of the material.
- Heating provision for chutes to avoid choking of material.

Technical Specifications

MACHINE MODEL	ALPHA 4	ALPHA 5	ALPHA 6**	ALPHA 7	ALPHA 8**	ALPHA 10**
No. of chutes	4	5	6	7	8	10
Channel Re Re Sort	120+60+60	180+60+60	180+120+60	240+120+60	300+120+60	360+180+60
RGB Cameras	8	10	12	14	16	20
Power Consumption	4KVA	5KVA	6 KVA	7 KVA	8 KVA	10 KVA
Air Compressor	20HP 110CFM	25HP 120CFM	30HP 130CFM	40HP 170CFM	40HP 200CFM	50HP 230CFM
Indicative O/P Capacity (Rice) @ 5% Dark	3-3.5 TPH	4-4.5 TPH	4.5-5 TPH	5.5-6 TPH	6.5-7 TPH	7-8 TPH
Final Rejection (Good : Bad)	1:20	1:20	1:20	1:20	1:20	1:20

* Capacity is indicative and may vary wrt to grain quality & density.

**Models which are recommended for four time sorting / double rejection for better final resort rejection. The capacity indicated above will vary according to chute configurations.

FOR ASSISTANCE ON AGI MILLTEC PRODUCTS & SERVICES PLEASE CALL

MILLTEC MACHINERY LTD.
No. 51/A , 1st Phase, KIADB Indl Area
Bommasandra, Bangalore -560099

Follow us on



@aggrowthintl / AGGROWTH.COM

TEL: +91-80-28016666
Email: milltec@milltecmachinery.com
Website : www.aggrowth.com
www.milltecmachinery.com