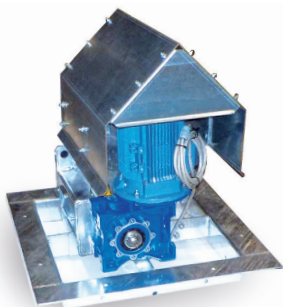
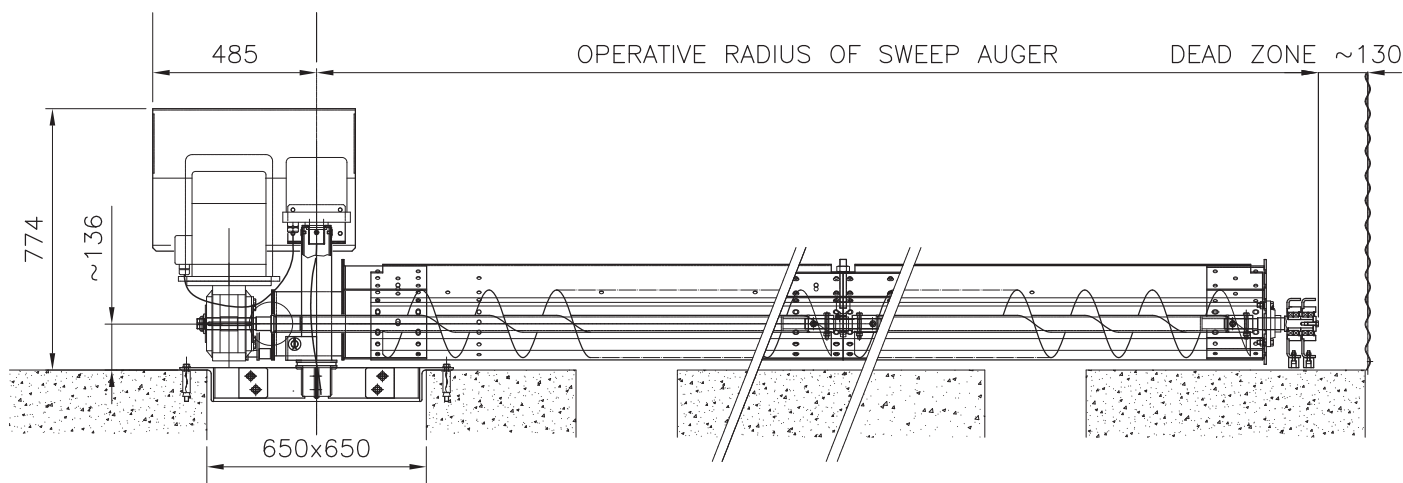


- › The AGI FRAME CST range of sweep augers is manufactured to suit a wide range of AGI FRAME FP silo diameters & is designed to be permanently installed in the silo & can be used with free flowing granular materials. Three reclaim capacities are available; the direct coupled gear motor drive can be mounted either in the silo or, at additional cost, in the gallery under the silo
- › The drive assembly is mounted on a heavy hot dipped galvanized support frame
- › ATEX specifications are available at additional cost

TECHNICAL DATA	CST
CAPACITY (BASED ON DRIED CEREAL 780 KG/m ³ . ACCORDING TO RPM)	30/40/50
FLIGHT DIAMETER	200 mm
FLIGHT THICKNESS	2 mm
SWEEP AUGER PROGRESSION	WALKING PLATES WITH UHMWP FEET
CENTRE TUBE DIAMETER	60,3 mm
CENTRE TUBE WALL THICKNESS	2,9 mm
APEX COVER	130X130X3 mm SQUARE TUBE
APEX COVER CONNECTION	BOLTED COVER PLATE
FLOW REGULATION ADJUSTABLE FLAPS	2 mm - GALVANIZED
SCREW ROTATION SPEED	150/200/300 RPM



FRAME S.R.L.

Via Bertella 2 - 40064 Ozzano dell'Emilia (BO) - Italy

P +39 051 798 107 | F +39 051 796 300 | E info@framespa.it | framespa.com | aggrowth.com