



A495

Electronic Throttle Controls Kit

Installation Instructions

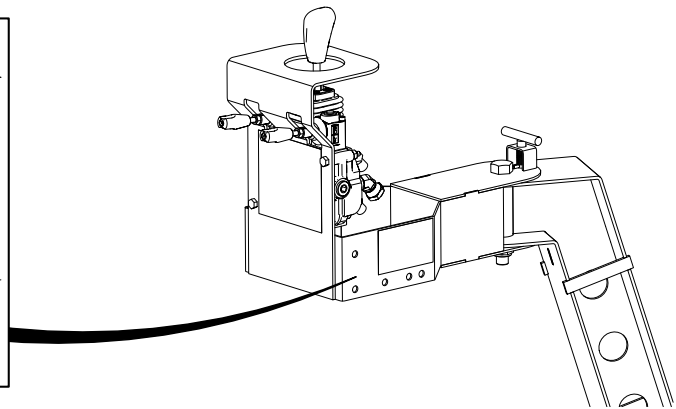
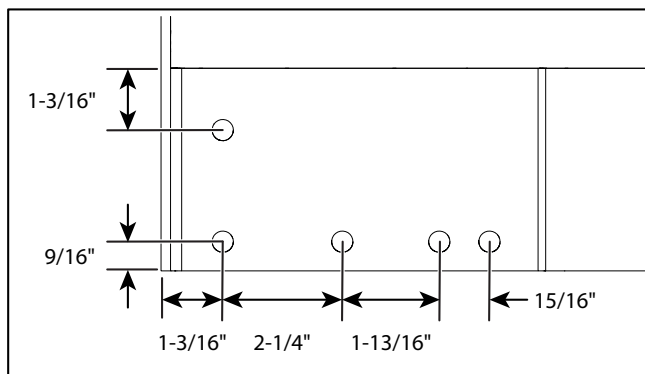
Applicable Models:

Westfield, AGI, Hutchinson, Mayrath, and GrainMaxx UTX Series

Pre-Installation Instructions

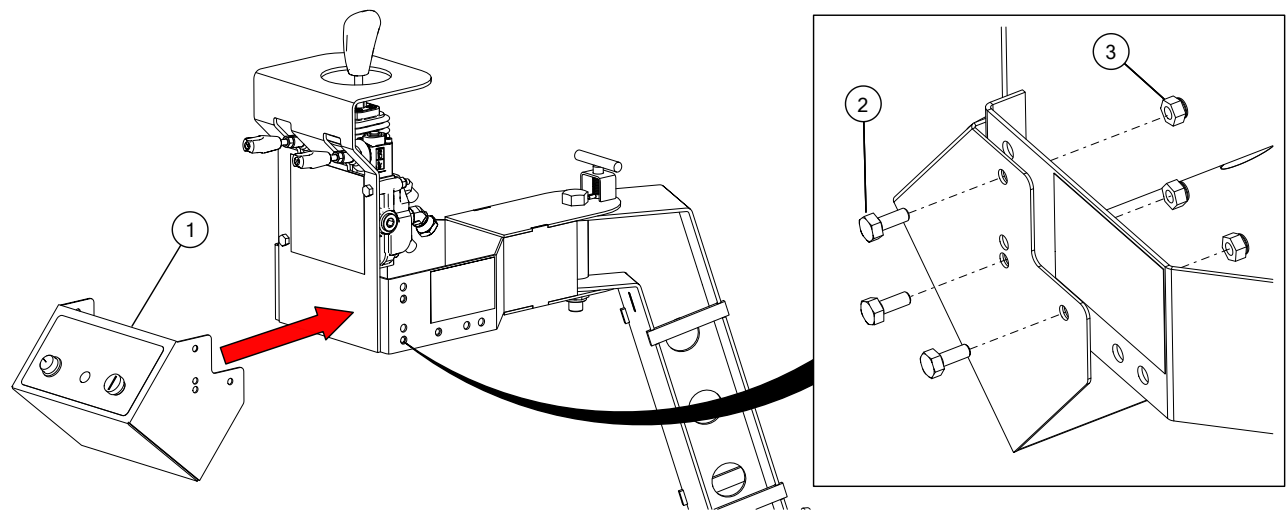
This step is only required when the mover controls assembly does not have the throttle control mounting holes.

1. Drill five $\frac{3}{8}$ " holes on each side of the control arm as shown.



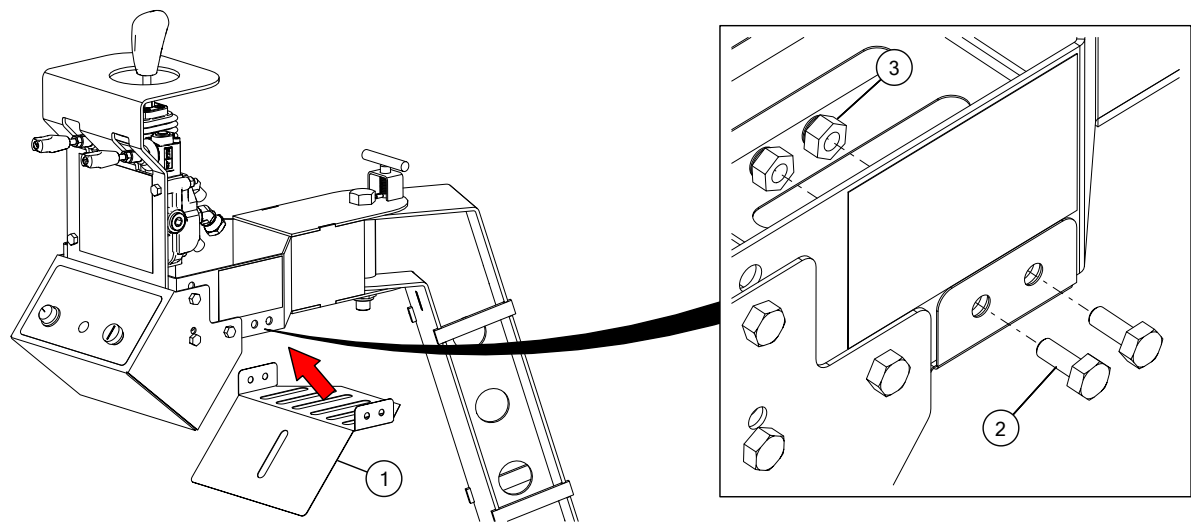
Installing Electronic Throttle Controls Kit

Attaching the Throttle Controls



1	Throttle controls	3	Locknut, 5/16"
2	Bolt, 5/16" x 3/4"		

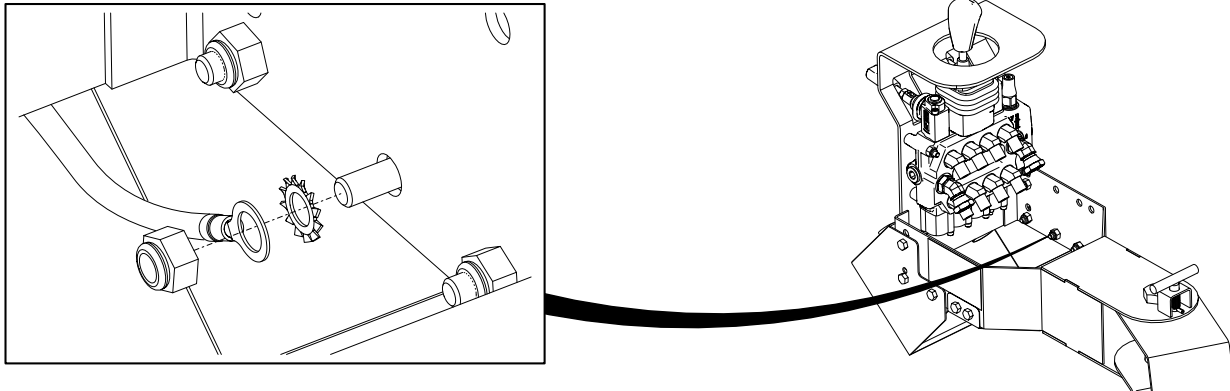
Attaching the Bottom Cover



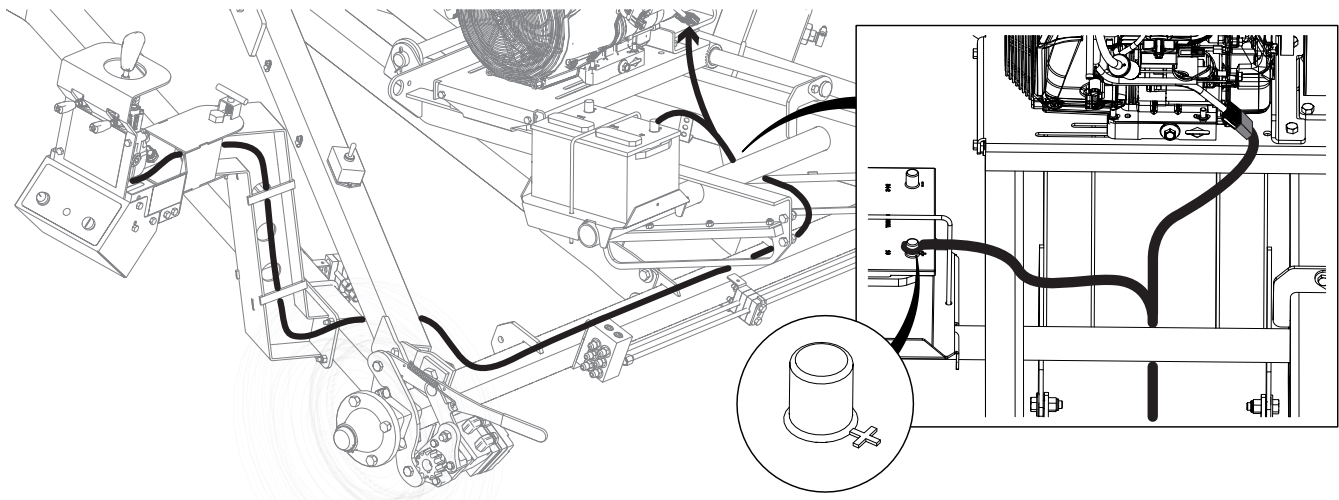
1	Throttle controls bottom cover	3	Locknut, 5/16"
2	Bolt, 5/16" x 3/4"		

Harness Routing

Attaching the Ground Wire Ring Terminal



Routing the Harness



AGI is a leading provider of equipment solutions for agriculture bulk commodities including seed, fertilizer, grain, and feed systems with a growing platform in providing equipment and solutions for food processing facilities. AGI has manufacturing facilities in Canada, the United States, the United Kingdom, Brazil, South Africa, India and Italy and distributes its products globally.



P.O. Box 39, Rosenort, Manitoba, R0G 1W0 Canada
P 866.467.7207 (Canada & USA) or 204.746.2396 | F 866.768.4852 | E sales@grainaugers.com

AGGROWTH.COM agrowthintl ©Ag Growth International Inc. 2021 | Printed in Canada