



A293

Right Angle Drive Kit

Installation Instructions

Applicable Models:

Westfield MKX, Westfield X, AGI X, Hutchinson HX, Mayrath HX 10 Series

Pre-Installation Instructions

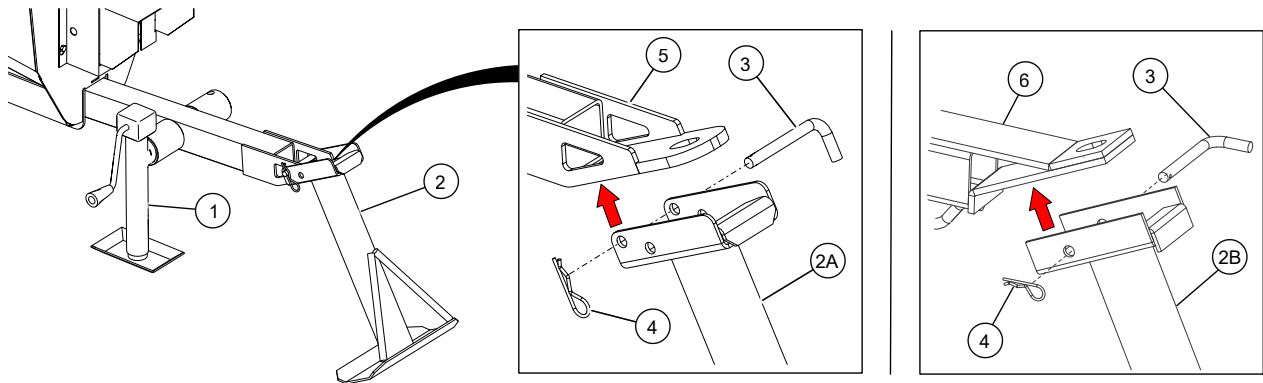
To prepare auger for kit installation:

1. Park auger on level ground. Fully lower the auger tube scissor lift.
2. Chock auger wheels to prevent rolling.
3. Relieve pressure in hydraulic hose(s) and disconnect them from tractor.
4. Position the hitch jack to support auger intake, then unhook tractor from auger.
5. Install support leg as shown in [Figure 1](#).

Important

The pin must be placed through the auger hitch. Do not use support leg without pin in place!

Figure 1. Installing Support Leg



1	Jack	4	Hair Pin
2A	Support Leg (Bolt-on Hitch)	5	Bolt-on Hitch
2B	Support Leg (Welded Hitch)	6	Welded Hitch
3	Pin		

6. Remove hitch jack.
7. Remove sprocket guard from boot.
8. Remove CV-PTO Driveline from auger by driving out the PTO roll pin.

Right Angle Drive Installation

Note

The gearbox is sent from the factory filled halfway with EP90 oil. Before further assembly, check oil level to make certain the gearbox is half full. Add oil if necessary. Do not use grease.

1. Remove coupler chain from coupler sprockets.
2. Slide the unconnected coupler sprocket onto end of flight shaft. Place outside face of sprocket flush with end of shaft, then tighten set screws as shown in [Figure 2](#).
3. Insert 7/16" x 4" bolts through upper holes of the gearbox mount assembly and position over the hitch tube as shown in [Figure 3](#). Secure with 7/16" lock nuts.
4. Position the jack mount below the hitch tube, as shown. Loosely fasten with 7/16" x 4-1/2" bolts and lock nuts as shown in [Figure 4 on page 4](#). Do not tighten these bolts until Step 8.
5. Loosen the bolts securing gearbox to adjust plate.
6. Loosen the 5/8" adjust nuts.
7. Align the coupler sprockets by adjusting gearbox vertically and horizontally. Leave about 3/8" clearance between sprockets as shown in [Figure 5](#).
8. Tighten bolts and lock nuts holding gearbox mount assembly to hitch tube.
9. Recheck the coupler sprocket alignment and make further adjustments if needed.
10. Tighten all gearbox and adjust plate bolts and nuts; also tighten set screws on the sprockets.
11. Install the coupler chain on the coupler sprockets (see [Figure 5](#)).
12. If necessary, adjust bottom drive chain to about 1/4" (0.64 cm) deflection by loosening the 4 bolts on the lower bearing, then retighten. (Oil the drive chain as required).
13. Replace the sprocket guard.

Figure 2. Removing Coupler Chain from Sprockets

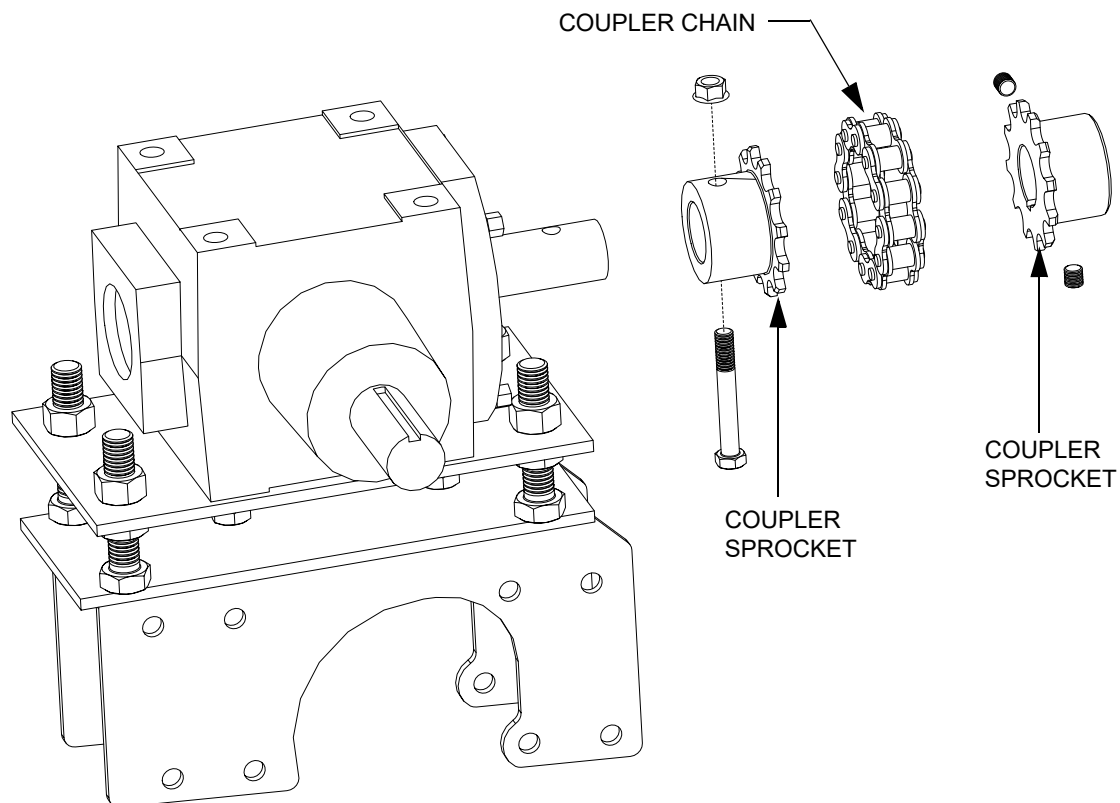


Figure 3. Installing Coupler Sprocket on Flight Shaft

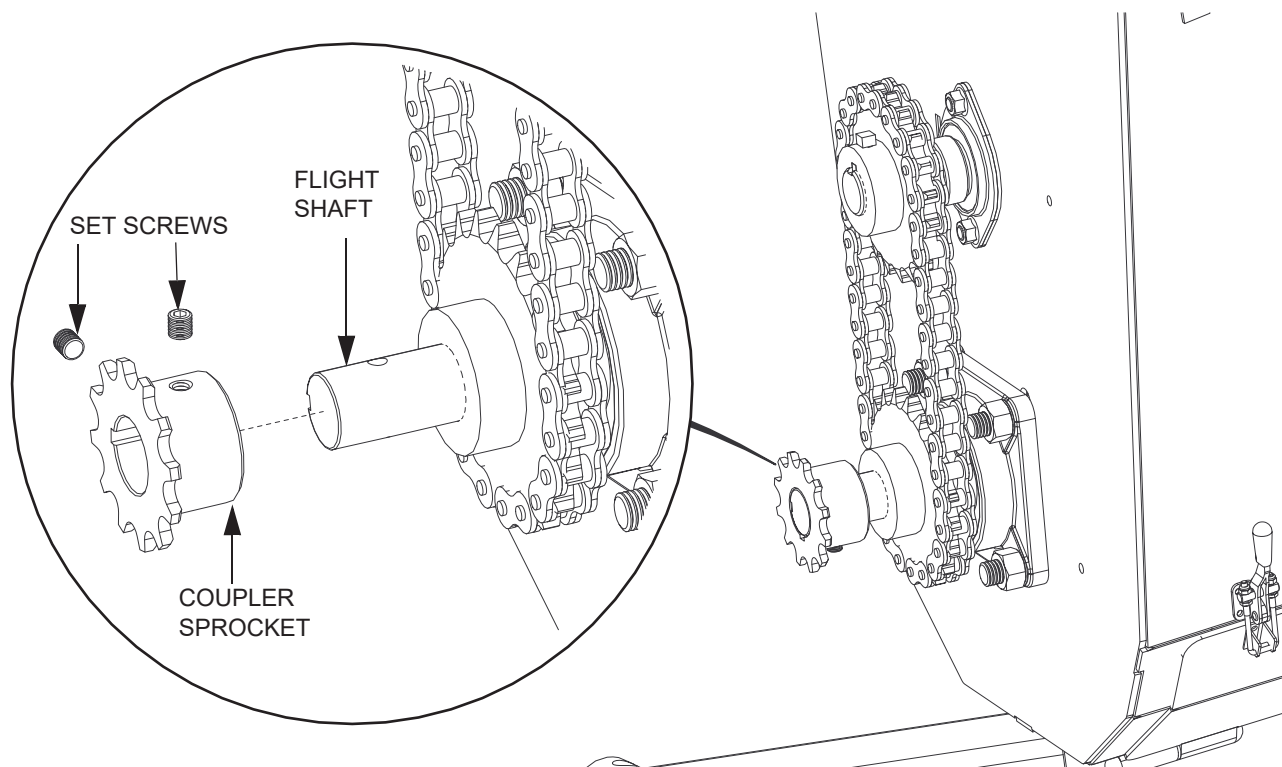
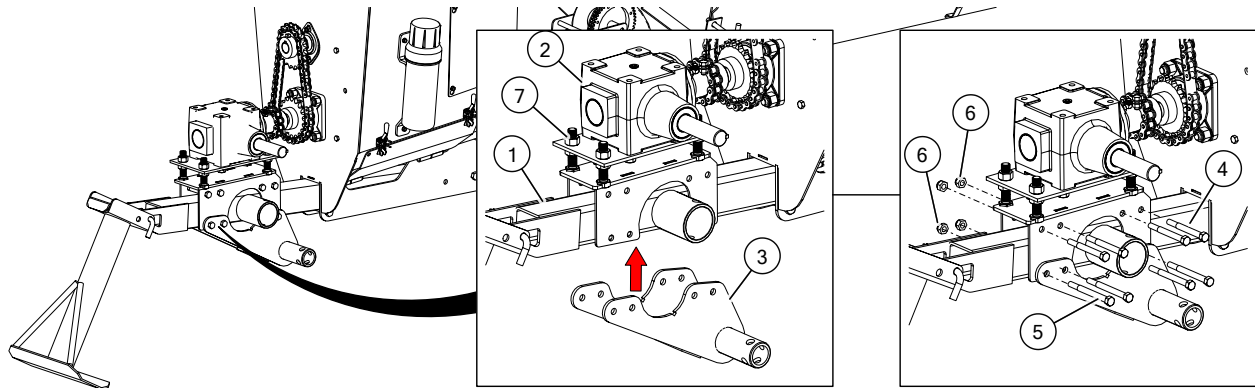
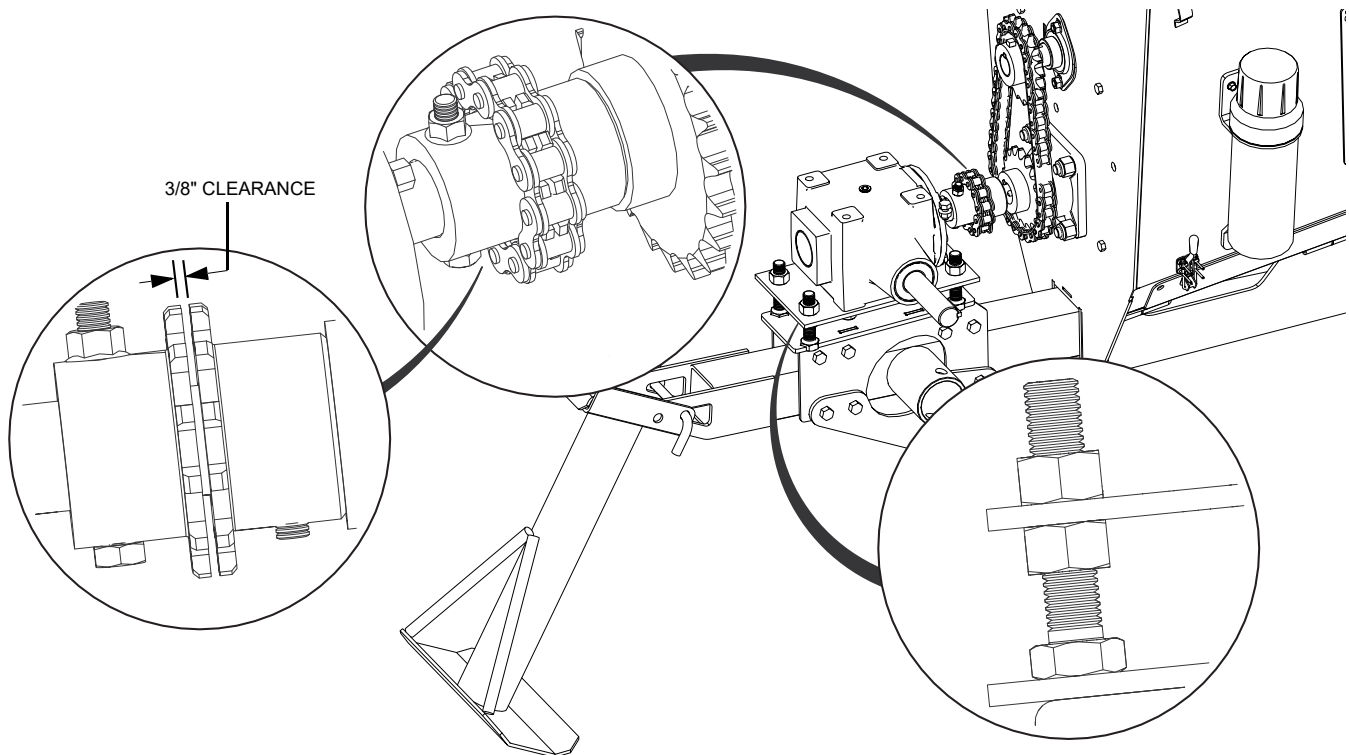


Figure 4. Installing Gearbox and Jack Mount

1	Hitch Tube	5	Bolt, 7/16" x 4-1/2"
2	Gearbox Mount Assembly	6	Lock Nut, 7/16"
3	Jack Mount	7	Gearbox / Adjust Plate Nuts
4	Bolt, 7/16" x 4"		

Figure 5. Adjusting Gearbox and Installing Coupler Chain

PTO Driveline

1. Clean paint from gearbox input shaft.
2. Slide the PTO driveline onto the gearbox input shaft, using a 1/4" x 1-1/2" square key. Tighten set screws securely.
3. Install the transport saddle with halfband on auger tube 14-1/2" from the boot. Use 7/16" x 1" bolts and locknuts.
4. Rotate transport saddle downwards until the PTO driveline clears the hopper winch handle. Tighten bolts.
5. Secure the PTO drive guard to guard attach plate using 3/8" x 3/4" bolts and washer locknuts, then tighten bolts (see [Figure 7](#)).
6. Slide PTO drive guard over PTO driveline, then attach to gearbox using two 1/2" x 1" bolts and lock washers as shown in [Figure 7](#).
7. Place PTO in transport position (place in transport saddle and secure with saddle pin and hair pin).

Figure 6. Installing the PTO Driveline

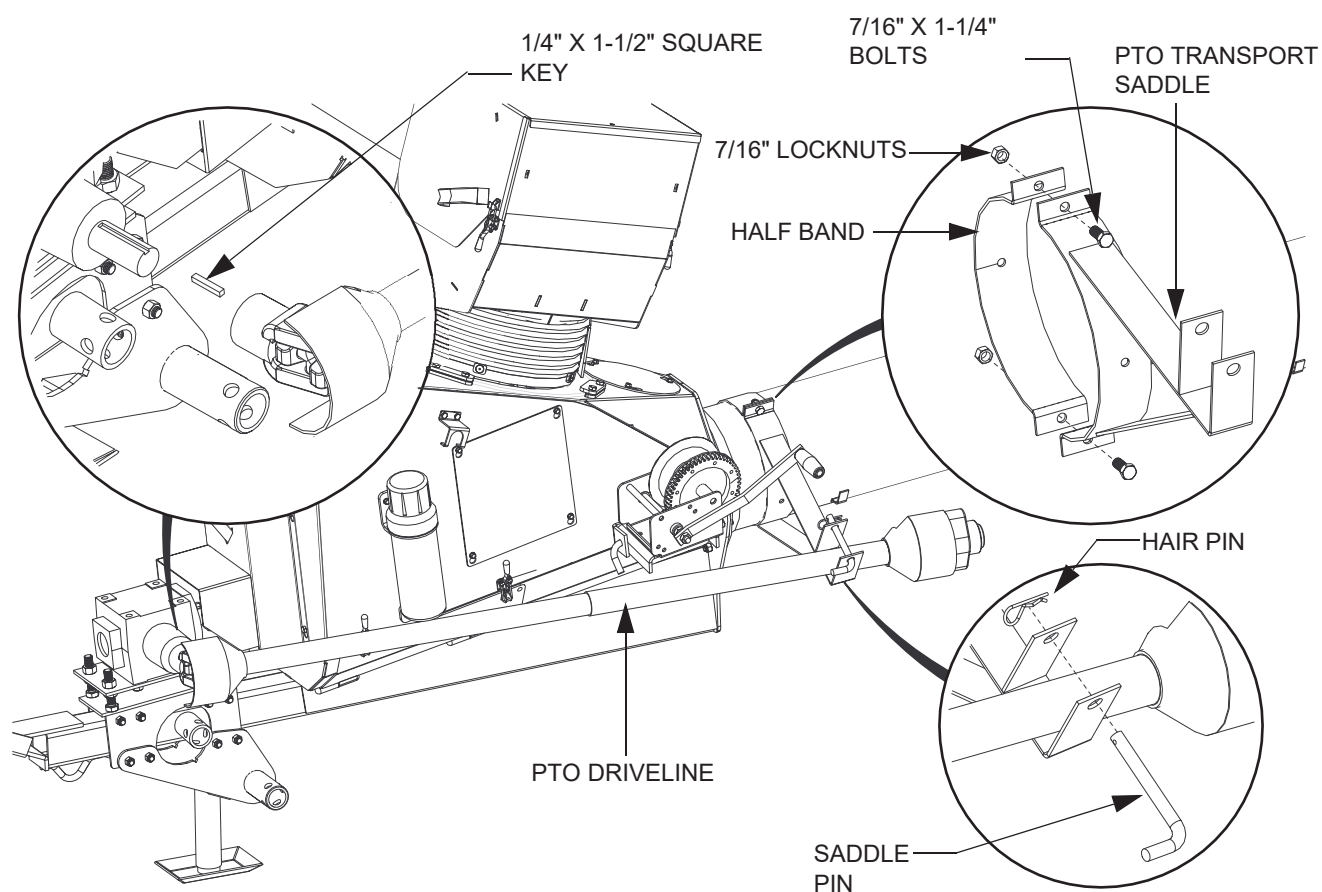
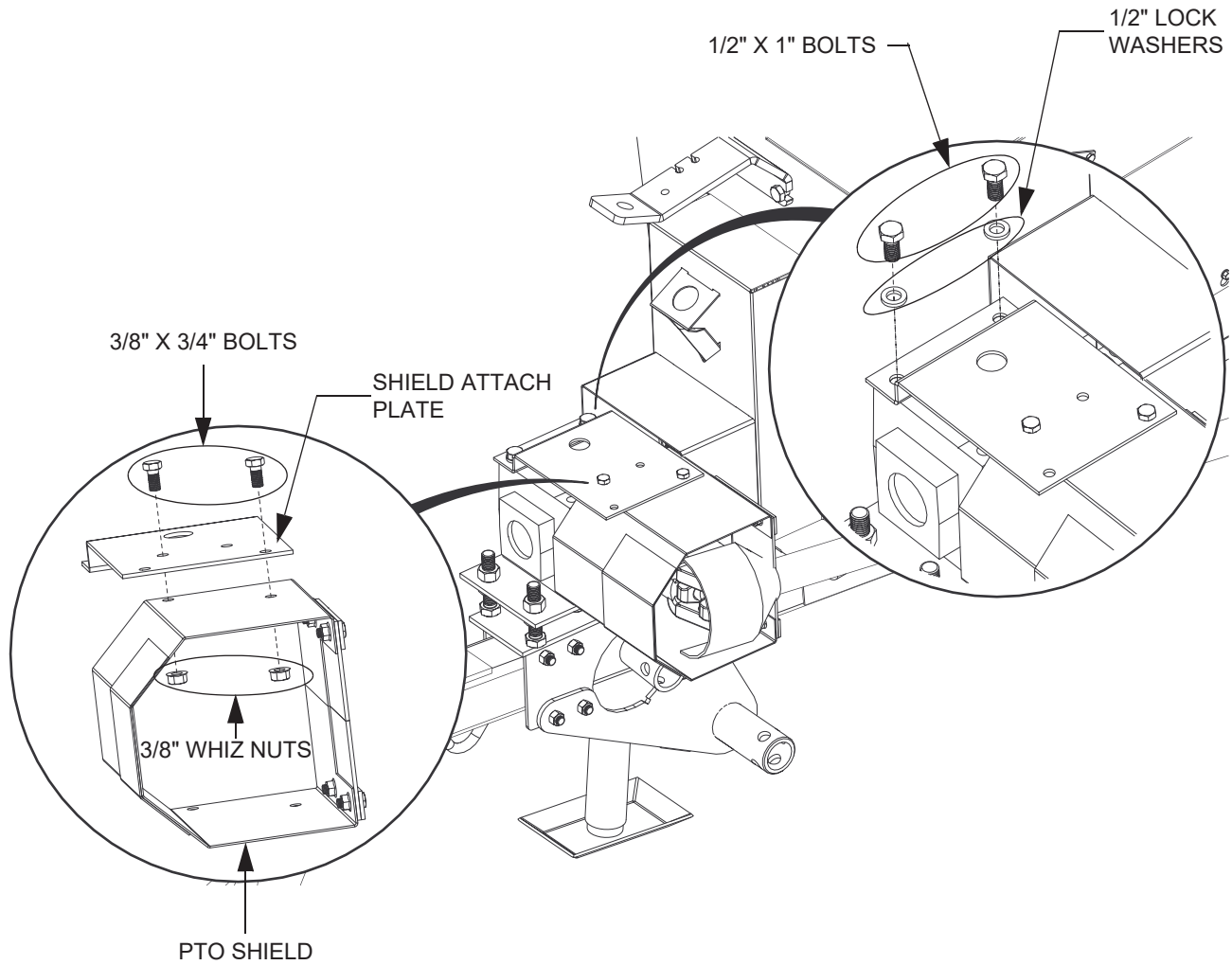


Figure 7. Installing the PTO Drive Guard and Guard Attach Plate

AGI is a leading provider of equipment solutions for agriculture bulk commodities including seed, fertilizer, grain, and feed systems with a growing platform in providing equipment and solutions for food processing facilities. AGI has manufacturing facilities in Canada, the United States, the United Kingdom, Brazil, South Africa, India and Italy and distributes its products globally.



P.O. Box 39, Rosenort, Manitoba, R0G 1W0 Canada
 P 866.467.7207 (Canada & USA) or 204.746.2396 | F 866.768.4852 | E sales@grainaugers.com

AGGROWTH.COM aggrowthintl
 ©Ag Growth International Inc. 2021 | Printed in Canada