



# **A292 Reverser Kit Installation Instructions**

Applicable Models:

**Westfield MKX, Westfield X, AGI X, Hutchinson HX, Mayrath HX 10 Series**

## **Pre-Installation Instructions**

1. Lower the auger to full down position, and disconnect the tractor from the auger (PTO shaft, hydraulic lines, and hitch).
2. Chock the auger wheels to prevent rolling.
3. Lower the swing hopper fully to the ground.
4. Remove the PTO driveline from the auger.
5. Remove the sprocket shield from the boot.
6. Remove the drive chain from the front of the boot.

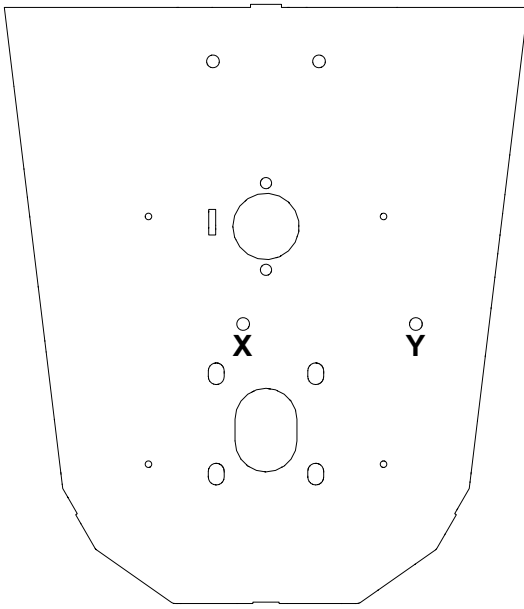
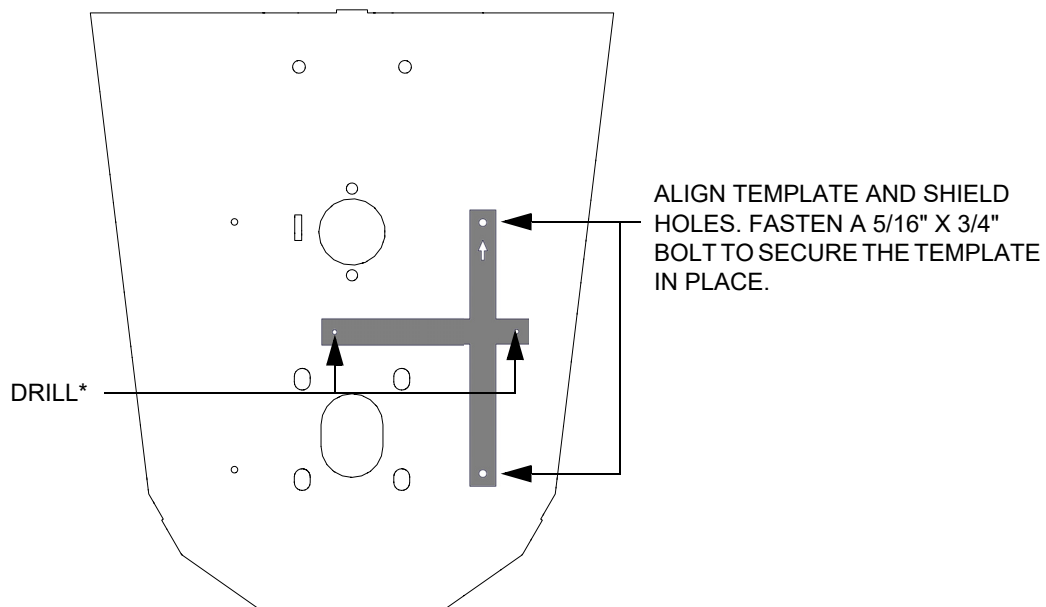
## **Installing the Reverser Kit**

1. Locate mounting holes **X** and **Y** (see [Figure 1](#)). Knock the steel plugs out of these holes using a punch and hammer.

### **Note**

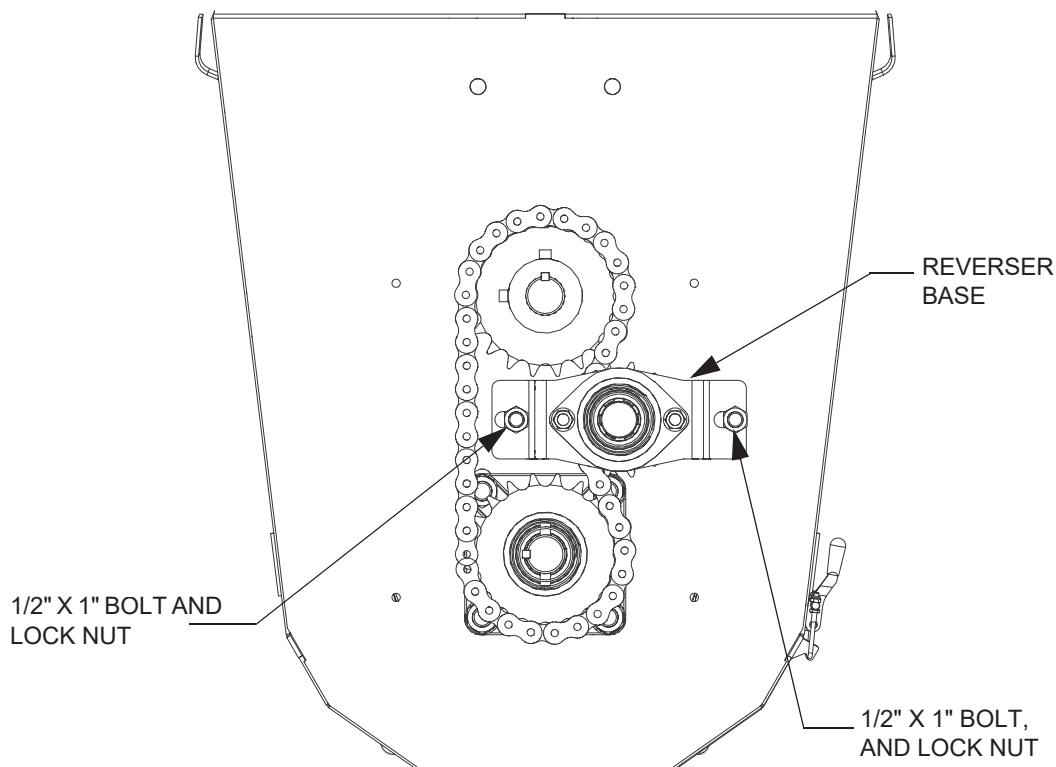
If the boot does not have the required holes for mounting the reverser bracket, drill the holes using the provided template (see [Figure 2](#)) or contact customer service for further assistance.

2. Install the reverser base with two 1/2" x 1" bolts and lock nuts (see [Figure 3](#)). Do not tighten until Step 5.
3. Install the half-link on roller chain and place chain over upper and lower sprockets, passing it through the reverser base.

**Figure 1. Locating Reverser Bolt Holes****Figure 2. Drilling Reverser Bolt Holes Using Template**

\* USE 3/16" DRILL BIT TO DRILL PILOT HOLES, THEN REMOVE THE TEMPLATE AND USE 33/64" DRILL BIT.

**Figure 3. Fastening Reverser Base to the Boot**



4. Join the two ends of the chain together using the half link and the connector link.
5. Push the reverser base against the chain as tight as possible and tighten the two 1/2" x 1" bolts.

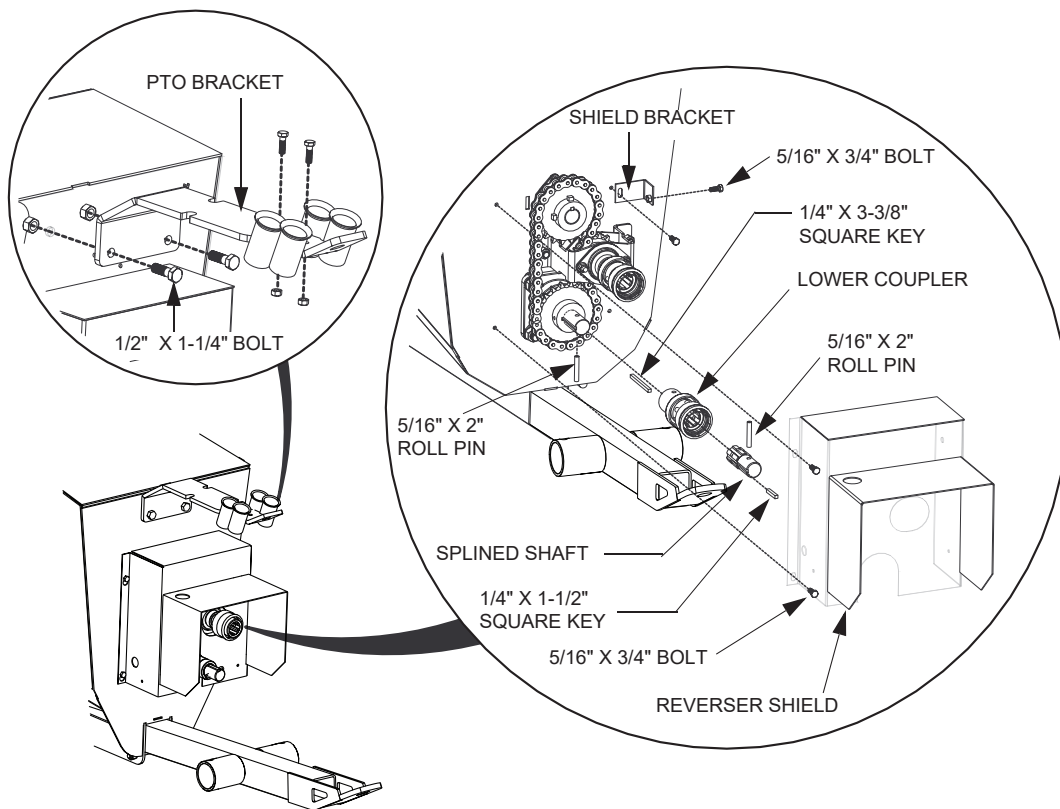
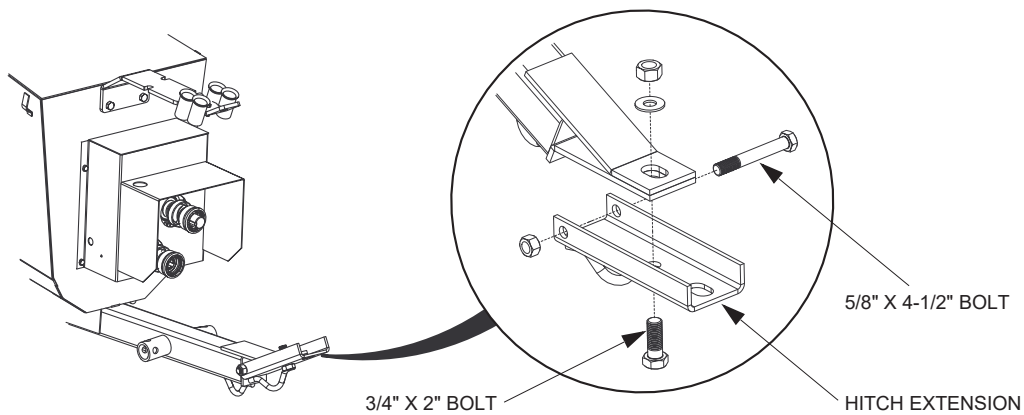
**Note**

It may be necessary to loosen the lower bearing and raise the lower sprocket to get proper chain wrap on the reverser sprocket.

6. Install the lower coupler on the flight shaft using a 1/4" x 3-3/8" square key and secure using a 5/16" x 2" roll pin (see [Figure 4](#)).
7. Facing the front of the boot, install the shield bracket onto the upper right boot mounting hole using one original 5/16" x 3/4" bolt.

**⚠ CAUTION** Protect your eyes when tapping in the roll pin.

8. Attach the new (longer) PTO bracket to front of boot face with the original 1/2" x 1-1/4" bolts and lock nuts.
9. Fasten hitch extension to tow bar with one 3/4" x 2" bolt, flat washer, and locknut, and one 5/8" x 4-1/2" bolt and lock nut.
10. Install the splined stub shaft on the PTO driveline using a 1/4" x 1-1/2" square key and 5/16" x 2" roll pin. Use a thread locking compound on setscrews to install and tighten them securely.
11. Install the new reverser shield using the three remaining original 5/16" x 3/4" bolts. Discard the old sprocket shield.

**Figure 4. Reverser Assembly Details (Splined Shaft, Coupler, Shield, and Hardware)****Figure 5. Welded Hitch Extension**

AGI is a leading provider of equipment solutions for agriculture bulk commodities including seed, fertilizer, grain, and feed systems with a growing platform in providing equipment and solutions for food processing facilities. AGI has manufacturing facilities in Canada, the United States, the United Kingdom, Brazil, South Africa, India and Italy and distributes its products globally.



P.O. Box 39, Rosenort, Manitoba, R0G 1W0 Canada  
 P 866.467.7207 (Canada & USA) or 204.746.2396 | F 866.768.4852 | E sales@grainaugers.com

AGGROWTH.COM aggrowthintl   
 ©Ag Growth International Inc. 2021 | Printed in Canada