

RECYCOIL®

RECTANGULAR CONTAINED TANKS



ULC S652 - 1,100 L TO 5,000 L

The Recycoil® Rectangular contained is intended to store previously used oil, including but not restricted to lubricating oil, crankcase oil, gear oil or transmission and hydraulic fluid. The robust design has durable all steel double wall construction in a compact low profile design. Best of all it is manufactured by AGI Westeel to provide years of worry free service.

FEATURES

- » Durable all steel double wall construction in a compact low profile design
- » Large spillbox with removable bottom access plate and a lockable weatherproof cover
- » Weather and corrosion resistant white powder coat finish on exterior
- » Heavy duty lifting lugs for easy installation and tank placement
- » Portable self supporting design installs easily on any level surface
- » Space between the inner and outer tank with a port to check for any fluid release from the primary tank
- » Camlock connection and suction pipe for fast and easy removal of contents
- » Easy attachment to auxiliary equipment

ACCORDANCE COMPLIANCE

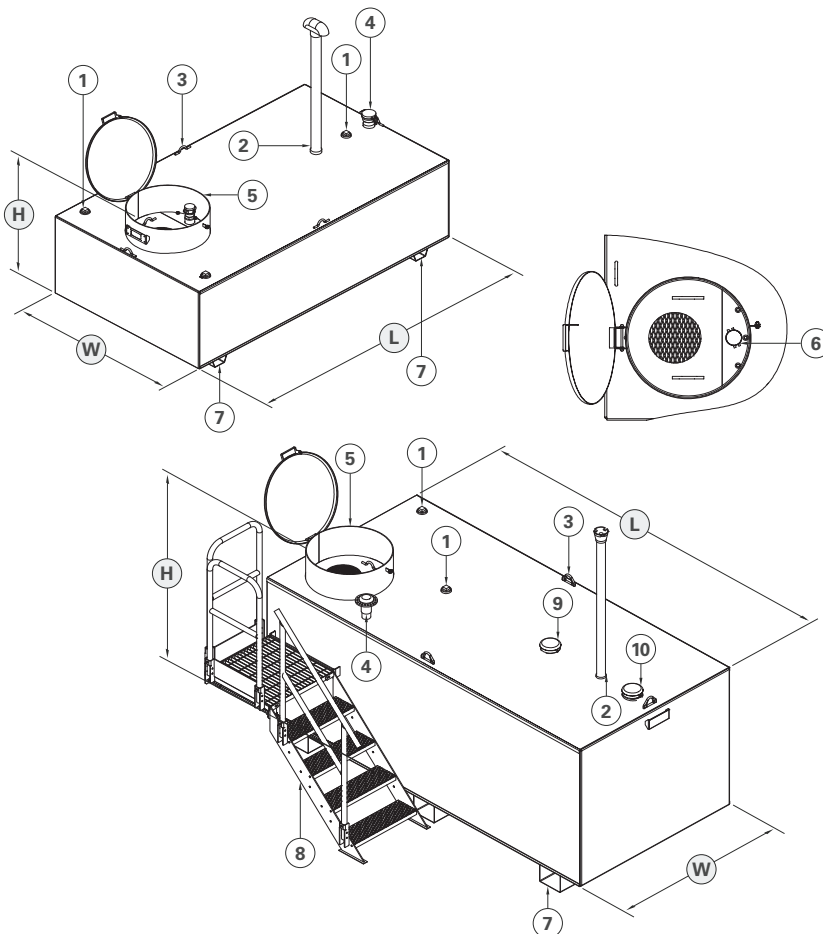
- » Recycoil assembly labelled to ULC S652t

TYPICAL APPLICATIONS

- » Recycling facilities
- » Vehicle and equipment maintenance
- » Oil and gas facilities
- » Manufacturing facilities
- » Agricultural facilities

OPTIONAL EQUIPMENT

- » Remote filling station
- » Oil filter drain rack
- » Level controls



Note: R2400 and R5000 models shown

TANK LAYOUT

- | | | |
|---|--|---|
| 1. 2" NPT - spare port | 5. 24" spillbox (strainer/suction) | 9. Primary emergency vent (R2499 and R5000 models) |
| 2. Primary tank normal vent port (stack & vent cap shipped loose) | 6. 2" NPT w/ camlock and dust cap | 10. Secondary emergency vent (R2499 and R5000 models) |
| 3. Lift lugs | 7. Support legs | |
| 4. Containment inspection/vent port | 8. Stair assembly (only on R5000 model)* | |

* optional equipment

SPECIFICATIONS

MODEL	PRIMARY TANK CAPACITY			LENGTH		WIDTH		HEIGHT		WEIGHT	
	US GAL	IMP GAL	L	IN	MM	IN	MM	LB	KG	LB	KG
R1100	300	250	1135	74	1891	48	1231	36	917	874	397
R2400	635	529	2400	101	2573	58	1464	43	1082	1239	563
R2499	661	550	2499	85	2151	40	1020	67	1696	1330	605
R5000	1323	1101	5000	122	3103	61	1542	63	1594	2635	1198



Consistent with AGI Westeel policy of continued research and development of our products, we reserve the right to modify or change information contained in this publication without notice. 1015-100

WESTEEL is an AGI Brand.

AGI is a leading provider of equipment solutions for agriculture bulk commodities including seed, fertilizer, grain, and feed systems with a growing platform in providing equipment and solutions for food processing facilities. AGI has manufacturing facilities in Canada, the United States, the United Kingdom, Brazil, India and Italy and distributes its products globally.

AGI WESTEEL