



Pitstop Drive Kits Assembly Manual

Original instructions

This manual applies to:

AGI BATCO 1800, 2400 Series

AGI HUTCHINSON 1800, 2400 Series

AGI WESTFIELD 1800, 2400 Series

Gas, Electric, and Hydraulic Drives

Original Instructions



Read this manual before using product. Failure to follow instructions and safety precautions can result in serious injury, death, or property damage. Keep manual for future reference.

Part Number: P1512180 R0

Revised: December 2019

CONTENTS

- 1. Safety..... 4**
 - 1.1 Safety Alert Symbol and Signal Words..... 4
 - 1.2 General Product Safety 4
 - 1.3 Moving Conveyor Belt Safety..... 4
 - 1.4 Rotating Parts Safety..... 5
 - 1.5 Work Area Safety 5
 - 1.6 Guards Safety 5
 - 1.7 Drives and Lockout Safety..... 5
 - 1.7.1 Gas Engine Safety..... 6
 - 1.7.2 Electric Motor Safety..... 6
 - 1.7.3 Hydraulic Power Safety 7
 - 1.8 Tire Safety..... 8
 - 1.9 Personal Protective Equipment..... 8
 - 1.10 Safety Equipment 9
 - 1.11 Safety Decals 9
 - 1.11.1 Decal Installation/Replacement..... 9
 - 1.11.2 Safety Decal Locations and Details 10
- 2. Assembly 17**
 - 2.1 Assemble the Lift Hose..... 17
 - 2.2 Install the Electric Drive 18
 - 2.2.1 Assemble the Motor Mounts..... 19
 - 2.2.2 Install the Motor Mounts and Rails 20
 - 2.2.3 Install the Guard Mounting Brackets..... 21
 - 2.2.4 Install the Motor 22
 - 2.2.5 Install the Pulleys, Drive Belts, and Tensioning Bolt..... 23
 - 2.2.6 Install the Drive Belt Guard..... 24
 - 2.2.7 Install the Shaft Guard 25
 - 2.3 Install the Hydraulic Wet Kit for the Electric Drive..... 26
 - 2.3.1 Install the Hydraulic Pump 27
 - 2.3.2 Install the Hydraulic Tank..... 32
 - 2.3.3 Install the Hydraulic Fittings into the Flow Controller..... 33
 - 2.3.4 Install the Hoses 34
 - 2.4 Install the Gas Drive 35
 - 2.4.1 Install the Drive and Battery Mounts..... 36
 - 2.4.2 Install the Motor and Gearbox..... 40
 - 2.4.3 Install the Battery and Fuel Tank 46
 - 2.4.4 Install the Guards 49
 - 2.5 Install the Hydraulic Drive 52
 - 2.5.1 Install the Hydraulic Motor 53
 - 2.5.2 Install the Flow Controller..... 58
 - 2.5.3 Install the Hydraulic Fittings into the Lift Control 62
 - 2.5.4 Install the Hoses 63
- 3. Limited Warranty..... 64**

1. Safety

1.1. Safety Alert Symbol and Signal Words



This safety alert symbol indicates important safety messages in this manual. When you see this symbol, be alert to the possibility of injury or death, carefully read the message that follows, and inform others.

Signal Words: Note the use of the signal words **DANGER**, **WARNING**, **CAUTION**, and **NOTICE** with the safety messages. The appropriate signal word for each message has been selected using the definitions below as a guideline.

DANGER Indicates an imminently hazardous situation that, if not avoided, will result in serious injury or death.

WARNING Indicates a hazardous situation that, if not avoided, could result in serious injury or death.

CAUTION Indicates a hazardous situation that, if not avoided, may result in minor or moderate injury.

NOTICE Indicates a potentially hazardous situation that, if not avoided, may result in property damage.

1.2. General Product Safety

It is the owner, operator, and maintenance personnel's responsibility to read and understand all safety



instructions, safety decals, and manuals and follow them when operating or maintaining the equipment.

- Owners must give instructions and review the information initially and annually with all personnel before allowing them in the work area. Untrained users/operators expose themselves and bystanders to possible serious injury or death.
- Use for intended purposes only.
- Do not modify the conveyor in any way without written permission from the manufacturer. Unauthorized modification may impair the function and/or safety. Any unauthorized modification will void the warranty.
- Follow a health and safety program for your worksite. Contact your local occupational health and safety organization for information.

1.3. Moving Conveyor Belt Safety

- WARNING**
- DO NOT step on or touch moving conveyor belt.
 - Shut off and lock out power to adjust, service, or clean.



1.4. Rotating Parts Safety

WARNING

- Keep body, hair, and clothing away from rotating pulleys, belts, chains, and sprockets.
- Do not operate with any guard removed or modified. Keep guards in good working order.
- Shut off and remove key or lock out power source before inspecting or servicing machine.



1.5. Work Area Safety

- Have another trained person nearby who can shut down the conveyor in case of accident.
- The work area should be kept clear of bystanders, including children.
- Keep the work area clean and free of debris.

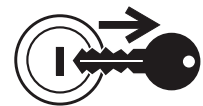
1.6. Guards Safety

WARNING

- Keep guards in place. Do not operate with guard removed.
- Do not walk on, step on, or damage guards.
- Lock out power before removing a guard.
- Ensure all guards are replaced after performing maintenance.

1.7. Drives and Lockout Safety

Inspect the power source(s) before using and know how to shut down in an emergency. Whenever you service or adjust your equipment, make sure you shut down the power source and unplug or remove the key (as applicable) to prevent inadvertent start-up and hazardous energy release. Know the procedure(s) that applies to your equipment from the following power source(s). Ensure that all personnel are clear before turning on power to equipment.



1.7.1 Gas Engine Safety

WARNING Power Source

- Keep guards in place and secure.
- Properly ventilate surrounding area.
- Never fill the fuel tank with the engine running, while smoking, or near an open flame. Always shut down and allow engine to cool before filling with fuel.
- Never overfill the tank or spill fuel. If fuel is spilled, clean it up immediately.
- Be sure to use the correct type and grade of fuel. Ground the fuel funnel or nozzle against the filler neck to prevent sparks that could ignite fuel vapors.
- Be sure to replace the fuel fill cap when you are done.



Lockout

- For engines with an electric start, remove the ignition key, the spark plug wire, or the spark plug.
- For engines with a rope or crank start, remove the spark plug wire or the spark plug.

1.7.2 Electric Motor Safety

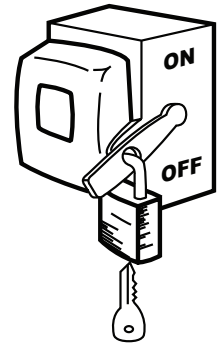
WARNING Power Source

- Electric motors and controls shall be installed and serviced by a qualified electrician and must meet all local codes and standards.
- A magnetic starter should be used to protect your motor.
- You must have a manual reset button.
- Reset and motor starting controls must be located so that the operator has full view of the entire operation.
- Locate main power disconnect switch within reach from ground level to permit ready access in case of an emergency.
- Motor must be properly grounded.
- Guards must be in place and secure.
- Ensure electrical wiring and cords remain in good condition; replace if necessary.
- Use a totally enclosed electric motor if operating in extremely dusty conditions.

Lockout

- The main power disconnect switch should be in the locked position during shutdown or whenever maintenance is performed.
- If reset is required, disconnect all power **before** resetting motor.

SERVICE DISCONNECT



1.7.3 Hydraulic Power Safety

WARNING Power Source

- Refer to the rules and regulations applicable to the power source operating your hydraulic drive.
- Do not connect or disconnect hydraulic lines while system is under pressure.
- Keep all hydraulic lines away from moving parts and pinch points.
- Escaping hydraulic fluid under pressure will cause serious injury if it penetrates the skin surface (serious infection or toxic reaction can develop). See a doctor immediately if injured.
- Use metal or wood as a backstop when searching for hydraulic leaks and wear proper hand and eye protection.
- Check all hydraulic components are tight and in good condition. Replace any worn, cut, abraded, flattened, or crimped hoses.
- Clean the connections before connecting to equipment.
- Do not attempt any makeshift repairs to the hydraulic fittings or hoses with tape, clamps, or adhesive. The hydraulic system operates under extremely high pressure; such repairs will fail suddenly and create a hazardous and unsafe condition.

Lockout

- Always place all hydraulic controls in neutral and relieve system pressure before disconnecting or working on hydraulic system.



1.8. Tire Safety

WARNING Failure to follow proper procedures when mounting a tire on a wheel or rim can produce an explosion that may result in serious injury or death.



- DO NOT attempt to mount a tire unless you have the proper equipment and experience to do the job.
- Have a qualified tire dealer or repair service perform required tire maintenance.
- When replacing worn tires, make sure they meet the original tire specifications. Never undersize the replacement tire.
- DO NOT weld to the tire rim with the tire mounted on the rim. This action may cause an explosion which could result in serious injury or death.
- Inflate tires to the manufacturer's recommended pressure.
- Tires should not be operated at speeds higher than their rated speed.
- Keep wheel lug nuts tightened to manufacturer's recommendations.
- Never reinflate a tire that has been run flat or seriously under-inflated without removing the tire from the wheel. Have the tire and wheel closely inspected for damage before remounting.



1.9. Personal Protective Equipment

The following Personal Protective Equipment (PPE) should be worn when operating or maintaining the equipment.

Safety Glasses

- Wear safety glasses at all times to protect eyes from debris.



Coveralls

- Wear coveralls to protect skin.



Hard Hat

- Wear a hard hat to help protect your head.



Steel-Toe Boots

- Wear steel-toe boots to protect feet from falling debris.



Work Gloves

- Wear work gloves to protect your hands from sharp and rough edges.



Dust Mask

- Wear a dust mask to prevent breathing potentially harmful dust.



1.10. Safety Equipment

The following safety equipment should be kept on site:

Fire Extinguisher

- Provide a fire extinguisher for use in case of an accident. Store in a highly visible and accessible place.



First-Aid Kit

- Have a properly-stocked first-aid kit available for use should the need arise, and know how to use it.



1.11. Safety Decals

- Keep safety decals clean and legible at all times.
- Replace safety decals that are missing or have become illegible. See decal location figures that follow.
- Replaced parts must display the same decal(s) as the original part.
- Replacement safety decals are available **free of charge** from your distributor, dealer, or factory as applicable.

1.11.1 Decal Installation/Replacement

1. Decal area must be clean and dry, with a temperature above 50°F (10°C).
2. Decide on the exact position before you remove the backing paper.
3. Align the decal over the specified area and carefully press the small portion with the exposed sticky backing in place.
4. Slowly peel back the remaining paper and carefully smooth the remaining portion of the decal in place.
5. Small air pockets can be pierced with a pin and smoothed out using the sign backing paper.

1.11.2 Safety Decal Locations and Details

Replicas of the safety decals that are attached to the conveyor and their messages are shown in the figure(s) that follow. Safe operation and use of the conveyor requires that you familiarize yourself with the various safety decals and the areas or particular functions that the decals apply to, as well as the safety precautions that must be taken to avoid serious injury, death, or damage.

Figure 1. Safety Decal Locations

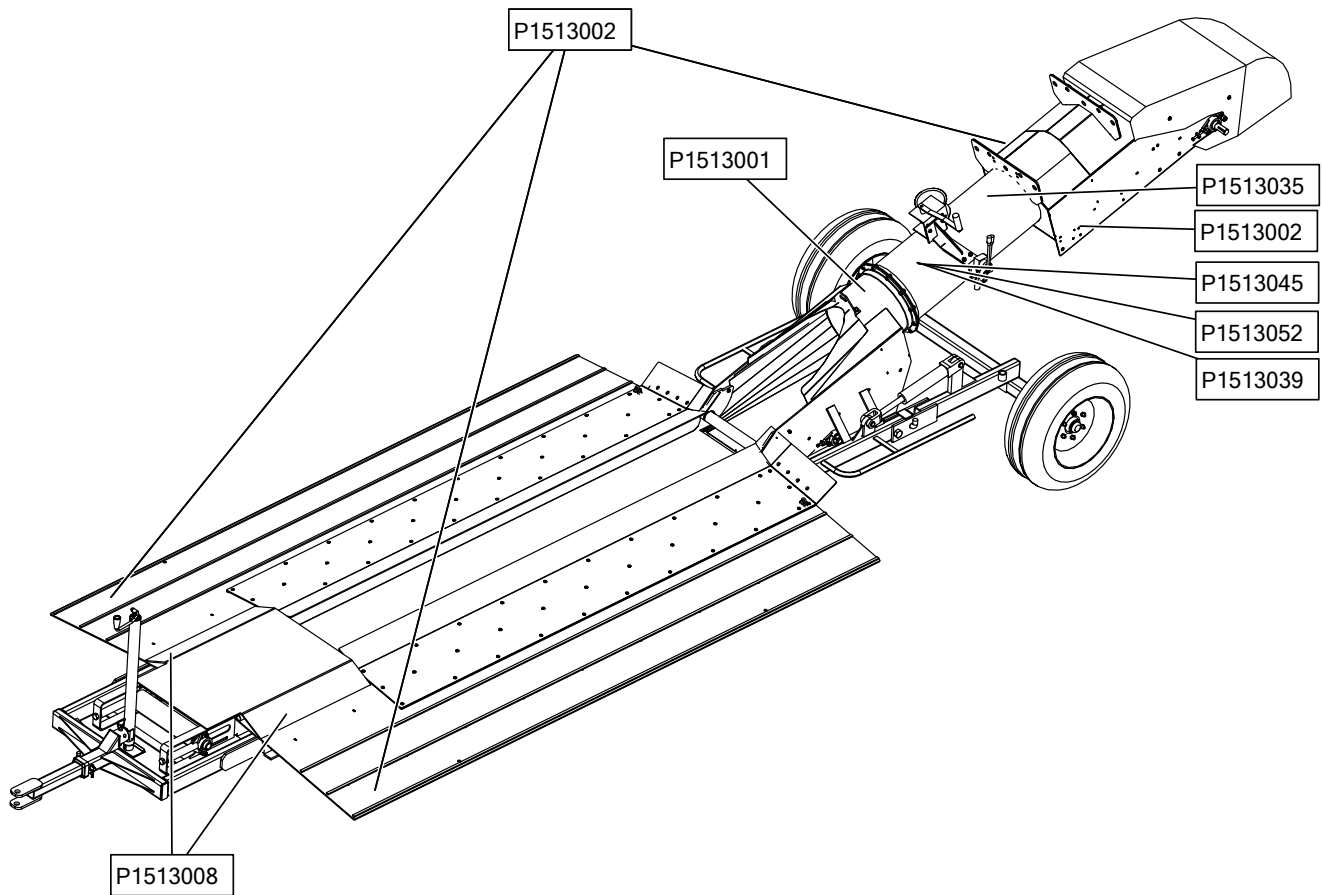
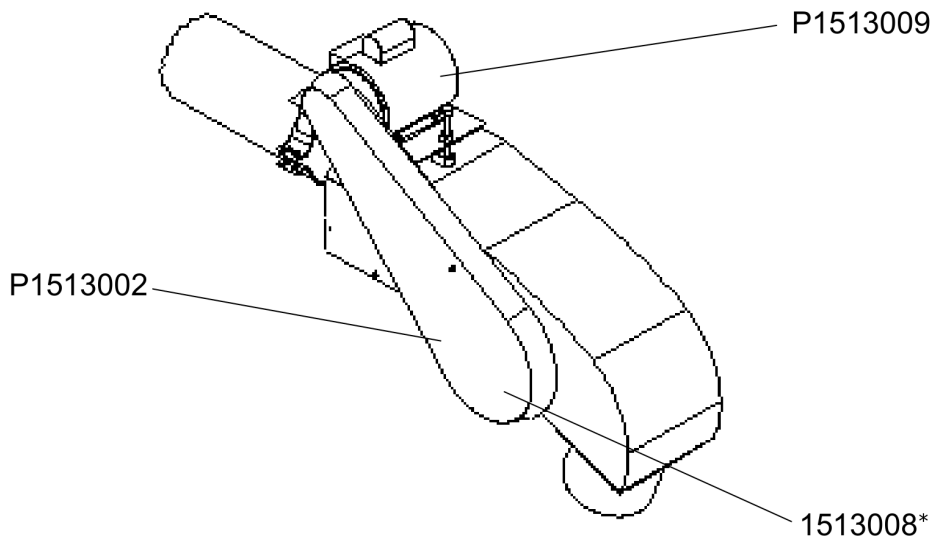


Figure 2. Electric Top Drive Safety Decal Locations



* behind guard

Figure 3. Hydraulic Top Drive Safety Decal Locations

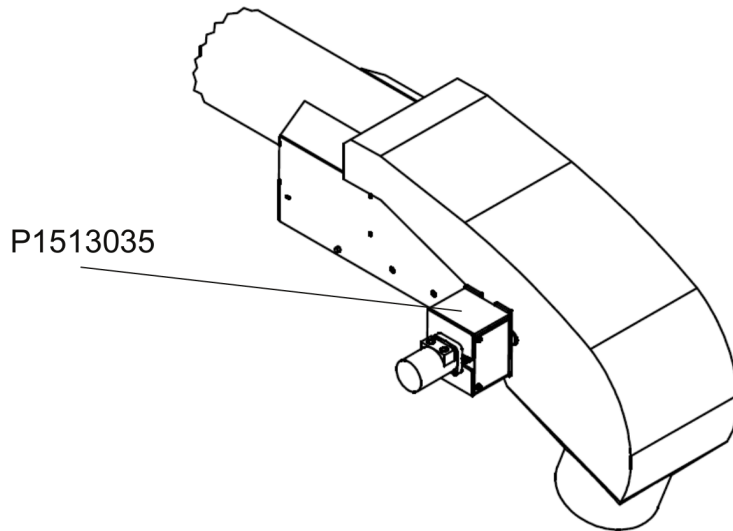


Table 1. Safety Decals




Part Number	Description
P1513001	<div style="border: 2px solid black; padding: 10px;"> <div style="background-color: #f4a460; text-align: center; padding: 5px; border: 1px solid black;">  WARNING </div> <div style="display: flex; justify-content: space-around; margin-top: 10px;"> <div style="text-align: center;">  </div> <div style="text-align: center;">  </div> </div> <p style="margin-top: 10px;">To prevent serious injury or death:</p> <ul style="list-style-type: none"> • Read and understand the manual before assembling, operating, or maintaining the equipment. • Only trained personnel may assemble, operate, or maintain the equipment. • Children and untrained personnel must be kept outside of the work area. • Do not modify the equipment. Keep in good working order. • If the manual, guards, or decals are missing or damaged, contact factory or representative for free replacements. • Lock out power before performing maintenance. • To prevent equipment collapse or upending, support equipment tube while disassembling certain components. • Electric motors must be grounded. Disconnect power before resetting overloads. </div>

Table 1 Safety Decals (continued)

Part Number	Description
P1513002	<div style="border: 2px solid black; padding: 10px;"> <div style="background-color: #f4a460; text-align: center; padding: 5px;">! WARNING</div> <div style="display: flex; justify-content: space-around; align-items: center;">   </div> <div style="text-align: center; padding: 10px 0;">ENTANGLEMENT HAZARD</div> <p>To prevent serious injury or death:</p> <ul style="list-style-type: none"> • Keep body, hair, and clothing away from rotating pulleys, belts, chains, and sprockets. • Do not operate with any guard removed or modified. Keep guards in good working order. • Shut off and remove key or lock out power source before inspecting or servicing machine. </div>
P1513008	<div style="border: 2px solid black; padding: 10px;"> <div style="background-color: #f4a460; text-align: center; padding: 5px;">! WARNING</div> <div style="display: flex; justify-content: space-between; align-items: center;"> <div style="display: flex; flex-direction: column; align-items: center;">   </div> <div style="padding-left: 20px;"> <p>MISSING GUARD HAZARD</p> <p>To prevent serious injury or death, shut off power and reattach guard before operating machine.</p> </div> </div> </div>

Table 1 Safety Decals (continued)







Part Number	Description
P1513009	<div style="display: flex; align-items: center;">  <div style="margin-left: 20px;">  </div> </div> <div style="border: 1px solid black; padding: 5px; margin-top: 10px;"> <div style="background-color: #f4a460; padding: 5px; display: flex; align-items: center;">  WARNING </div> <div style="padding: 5px;"> <p style="margin: 0;">ELECTROCUTION HAZARD</p> <p style="margin: 0;">To prevent serious injury or death:</p> <ul style="list-style-type: none"> Only qualified personnel should service electrical components. Disconnect and lockout power before inspecting or servicing unit. Keep electrical components in good repair. </div> </div>
P1513035	<div style="border: 1px solid black; padding: 5px; margin-bottom: 10px;"> <div style="background-color: #f4a460; padding: 5px; display: flex; align-items: center;">  WARNING </div> <div style="display: flex; justify-content: space-around; align-items: center; padding: 10px;">   </div> </div> <div style="border: 1px solid black; padding: 5px;"> <p style="margin: 0;">HIGH PRESSURE FLUID HAZARD</p> <p style="margin: 0;">Hydraulic fluid can cause serious injury if it penetrates the skin. If it does, see a doctor immediately.</p> <ul style="list-style-type: none"> Relieve system pressure before repairing, adjusting or disconnecting. Wear proper hand and eye protection when searching for leaks. Use wood or cardboard instead of hands. </div>

Table 1 Safety Decals (continued)





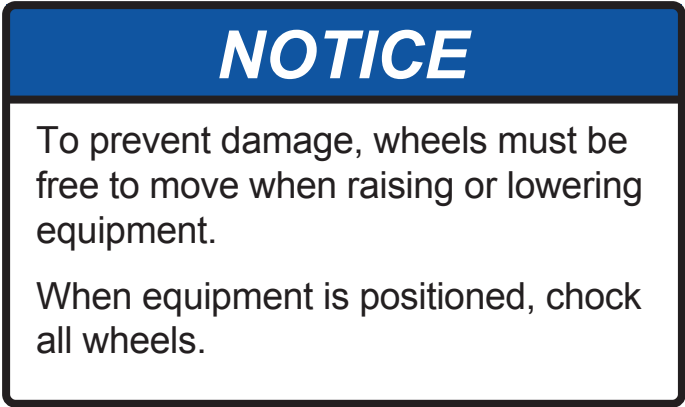

Part Number	Description
P1513039	<div style="border: 1px solid black; padding: 10px;"> <div style="background-color: yellow; text-align: center; padding: 5px;">  CAUTION </div> <p>For proper raising and lowering of equipment:</p> <ul style="list-style-type: none"> • After lowering equipment, always tighten brake lock by turning winch handle clockwise at least two clicks. • Rotate winch handle until cable has light tension, when in towing position. • Do not lubricate winch brake discs. • Inspect lift cable periodically; replace if damaged. • Inspect cable clamps periodically; tighten if necessary. </div>
P1513045	<div style="border: 1px solid black; padding: 10px;"> <div style="background-color: orange; text-align: center; padding: 5px;">  WARNING </div> <div style="display: flex; justify-content: space-around; align-items: center; margin: 10px 0;">   </div> <div style="text-align: center; margin: 10px 0;"> <p>OPEN BELT CONVEYOR</p> <p>To prevent death or serious injury:</p> <ul style="list-style-type: none"> • DO NOT step on or touch moving conveyor belt. • Shut off and lock out power to adjust, service, or clean. </div> </div>

Table 1 Safety Decals (continued)

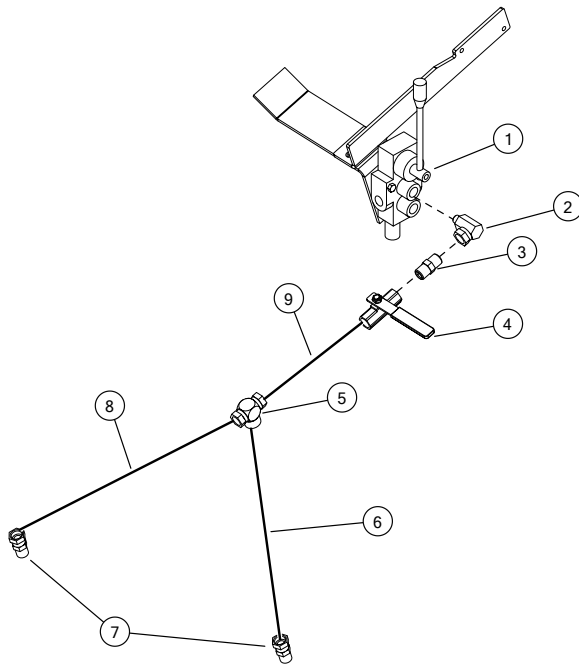
Part Number	Description
P1513052	 <p>NOTICE</p> <p>To prevent damage, wheels must be free to move when raising or lowering equipment.</p> <p>When equipment is positioned, chock all wheels.</p>

2. Assembly

 Before continuing, ensure you have completely read and understood this manual’s Safety section, in addition to the safety information in the section(s) below.

2.1. Assemble the Lift Hose

Figure 4. Assemble the Lift Hose



Item	Description
1	Lift Control
2	90° Swivel (#6 ORB to 1/2" FPT)
3	Hex Nipple (1/2" PT)
4	1/2" Ball Valve
5	Tee-Swivel (1/2" FEM)
6	3/8" X 2' Hose (1/2" MPT to 1/2" MPT PC)
7	Swivel (3/8" MPT X 1/2" FPT)
8	3/8" X 3'7" Hose (1/2" MPT to 1/2" MPT PC)
9	3/8" X 10" Hose (10" MPT to 1/2" MPT PC)

Assembly Notes

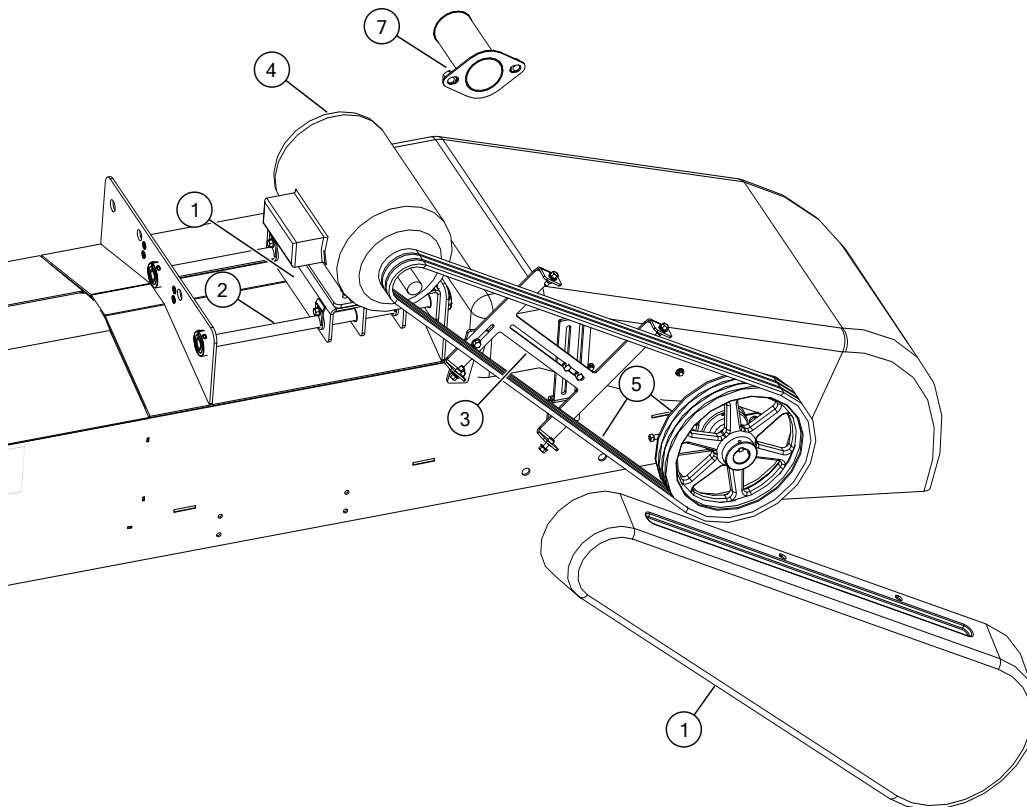
- The swivels (7) are installed into the hydraulic cylinders on either side of the pitstop tube.

2.2. Install the Electric Drive

Installing the electric drive requires the completion of the following tasks:

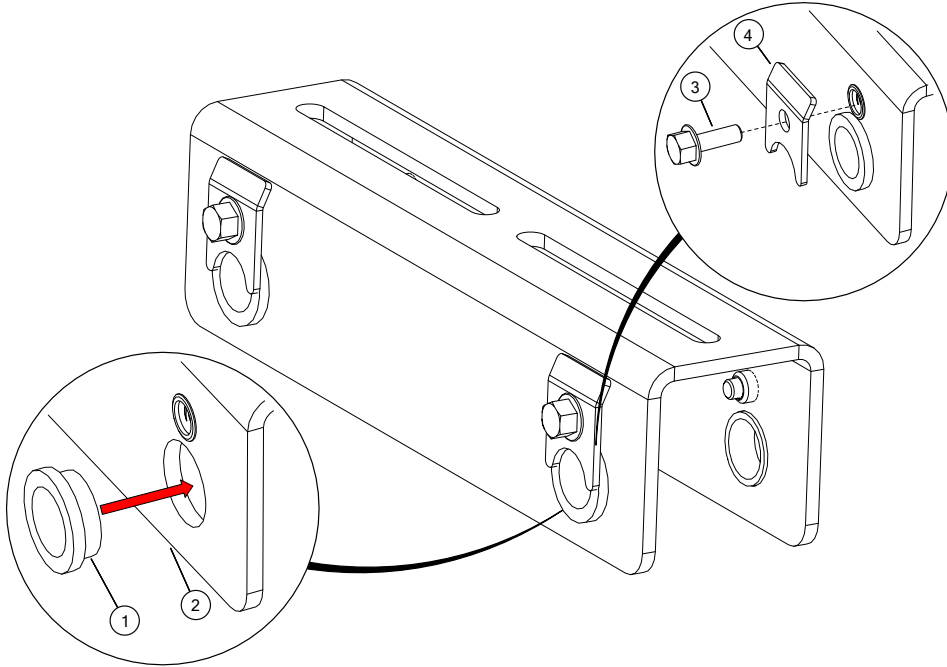
Step	Task
1	Assemble the Motor Mounts
2	Install the Motor Mounts and Rails
3	Install the Guard Mounting Brackets
4	Install the Motor
5	Install the Pulleys, Drive Belts, and Tensioning Bolt
6	Install the Drive Belts Guard
7	Install the Shaft Guard

Figure 5. Electric Drive Overview



2.2.1 Assemble the Motor Mounts

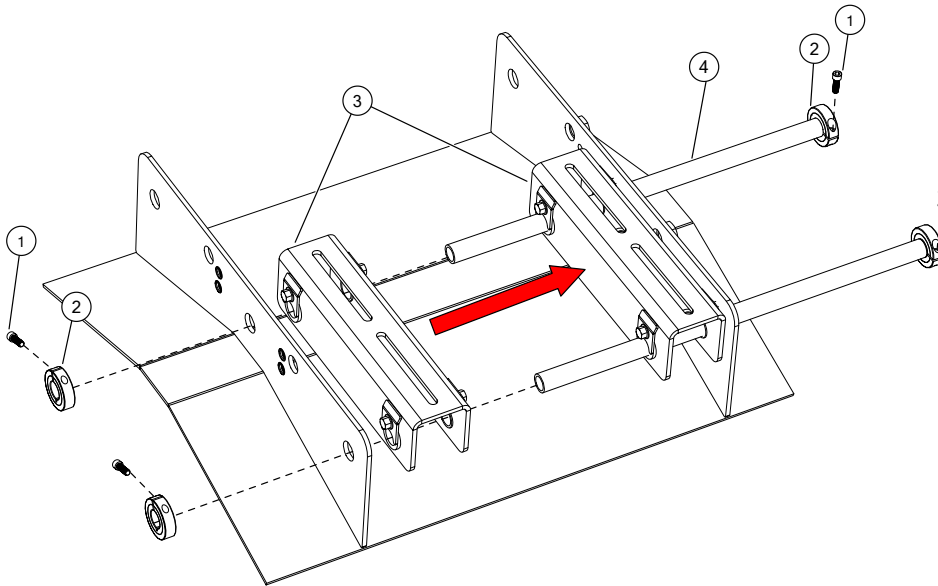
Figure 6. Step 1: Assemble the Motor Mounts (X2)



Item	Description	Quantity (per mount)
1	Bushing	4
2	Motor Mount	1
3	3/8" X 1" Hex Flange Bolt	4
4	Bushing Retainer	4

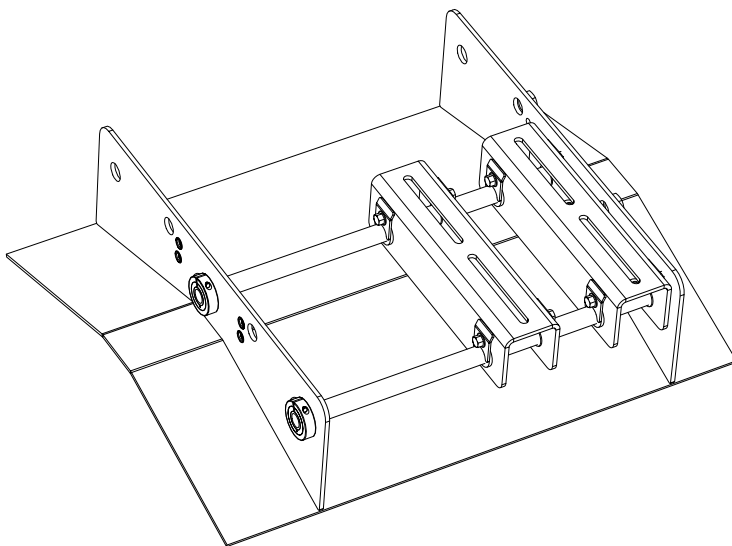
2.2.2 Install the Motor Mounts and Rails

Figure 7. Step 1: Install the Motor Mounts and Rails



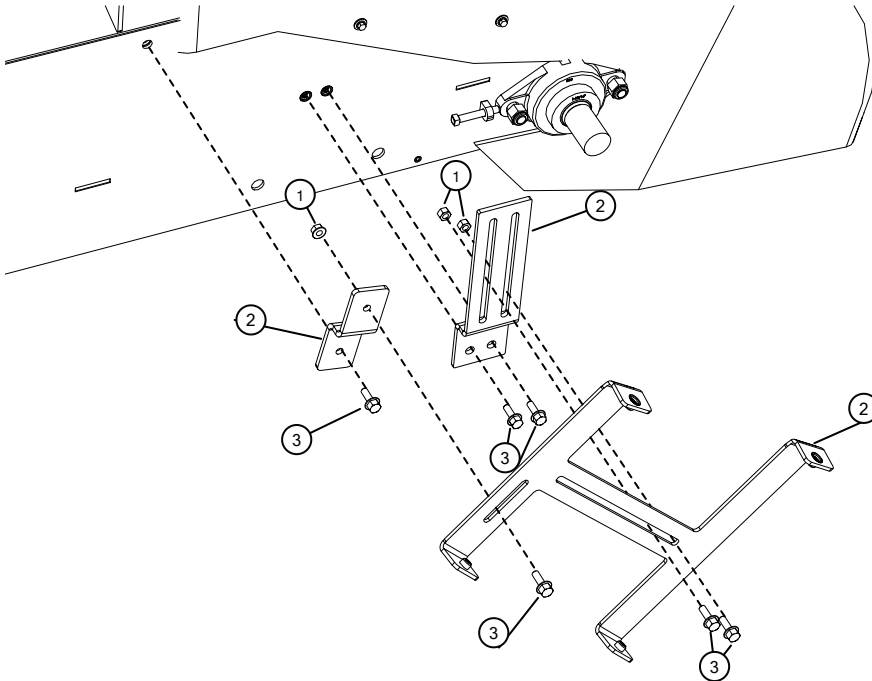
Item	Description
1	5/16" X 1" Screw (provided with collar)
2	1" Collar
3	Assembled Motor Mounts
4	Motor Mount Rail

Figure 8. Visual Check



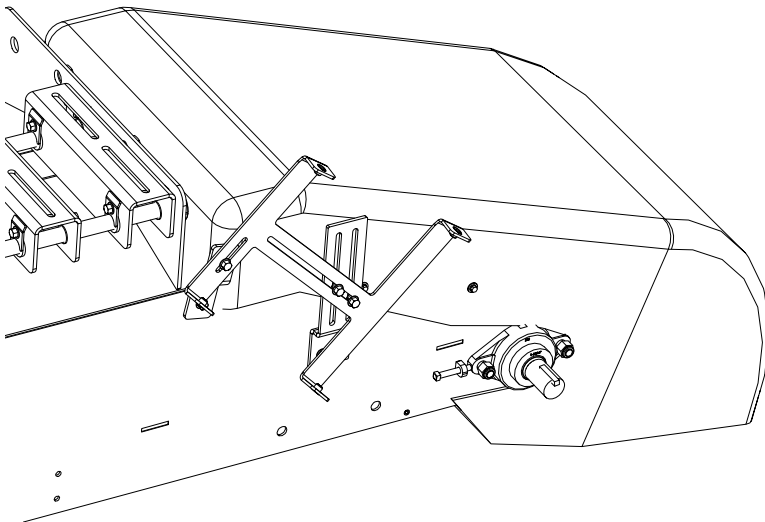
2.2.3 Install the Guard Mounting Brackets

Figure 9. Step 1: Install the Guard Mounting Brackets



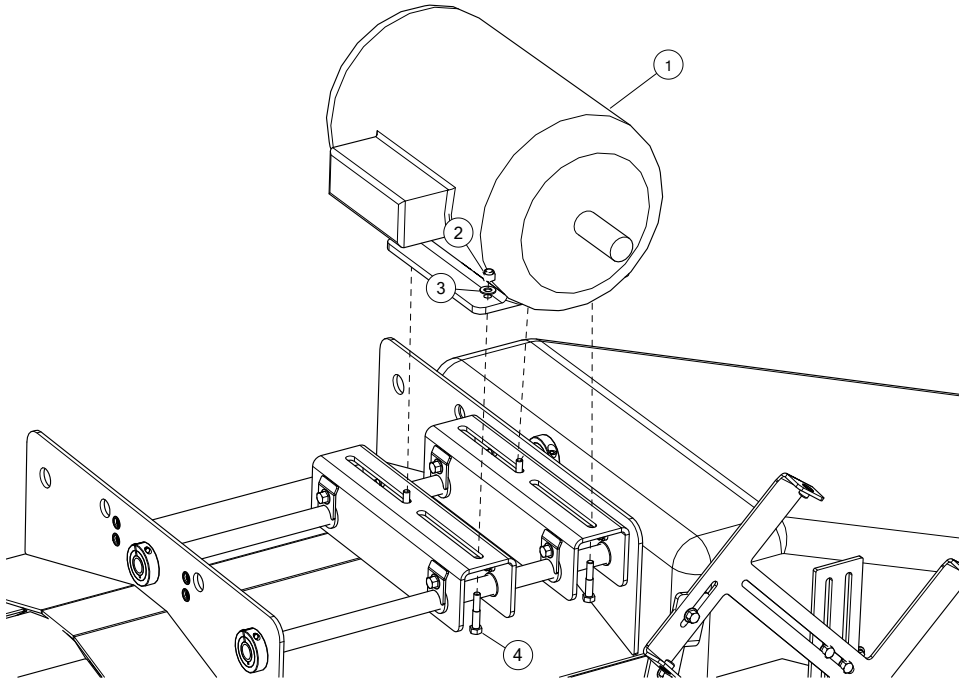
Item	Description
1	3/8" Hex Flange Nut
2	Guard Mount Bracket
3	3/8" X 1" Hex Flange Bolt

Figure 10. Visual Check



2.2.4 Install the Motor

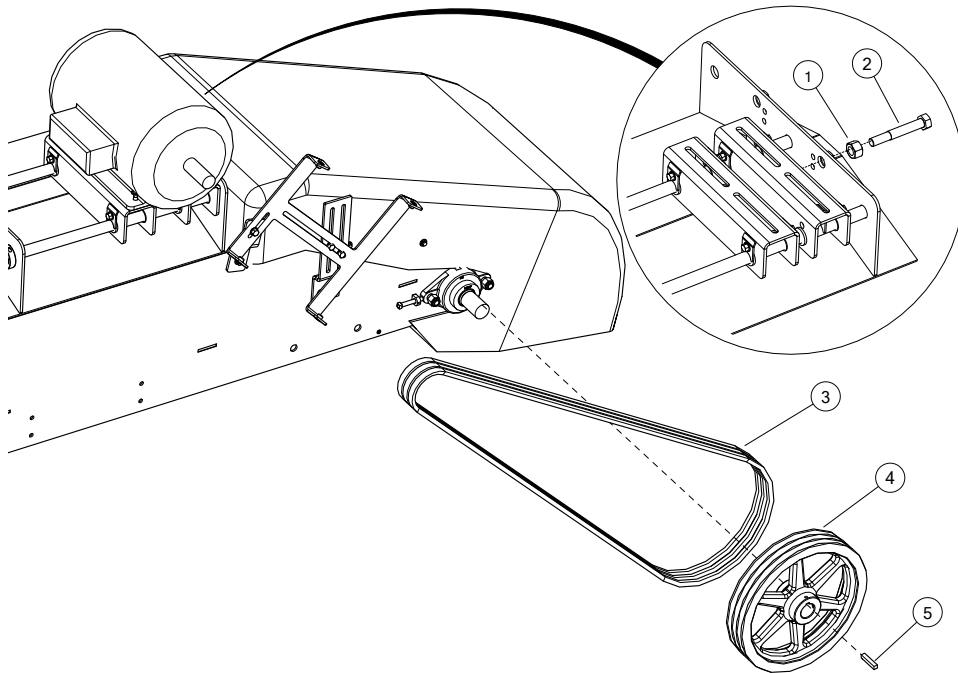
Figure 11. Step 1: Install the Motor



Item	Description
1	Motor
2	3/8" Lock Nut
3	3/8" Flat Washer
4	3/8" X 2" Hex Bolt (GR 8)

2.2.5 Install the Pulleys, Drive Belts, and Tensioning Bolt

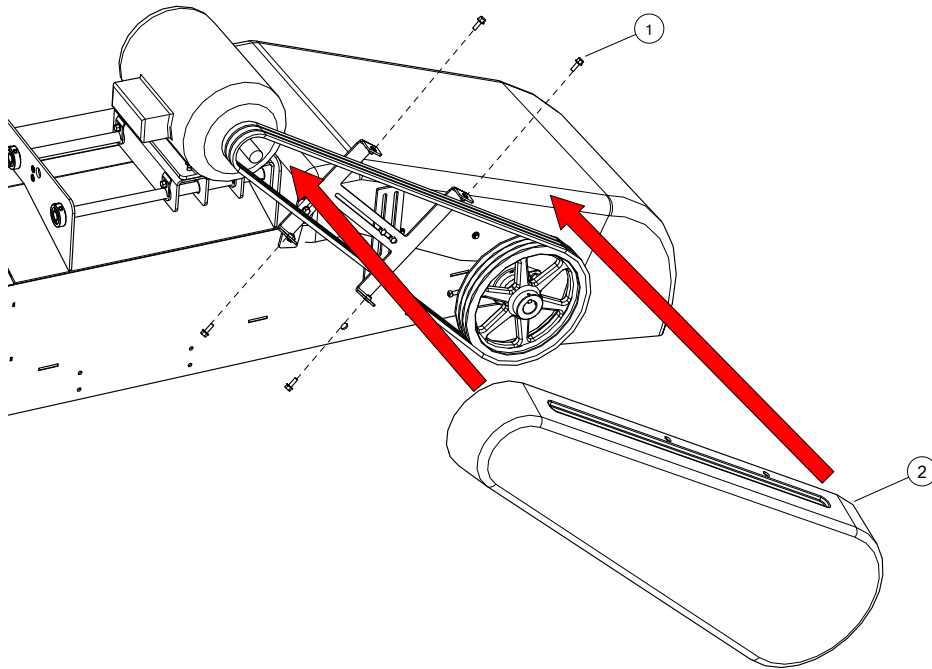
Figure 12. Step 1: Installing the Pulleys, Belts, and Tensioning Bolt



Item	Description
1	3/4" Hex Nut
2	3/4" X 5" Tensioning Hex Bolt (GR8)
3	Drive Belts
4	Pulley
5	3/8" X 2" Key

2.2.6 Install the Drive Belt Guard

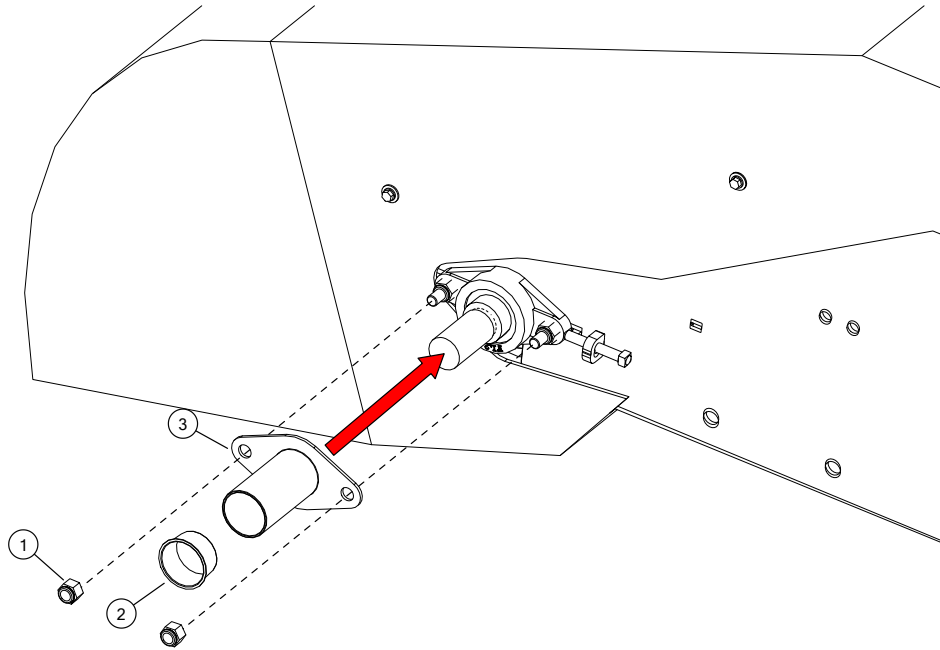
Figure 13. Step 1: Install the Drive Belt Guard



Item	Description
1	3/8" X 1" Hex Flange Bolt
2	Drive Belt Guard

2.2.7 Install the Shaft Guard

Figure 14. Step 1: Install the Shaft Guard



Item	Description
1	5/8" Nylock Nut
2	Shaft Guard Plug
3	Shaft Guard

2.3. Install the Hydraulic Wet Kit for the Electric Drive

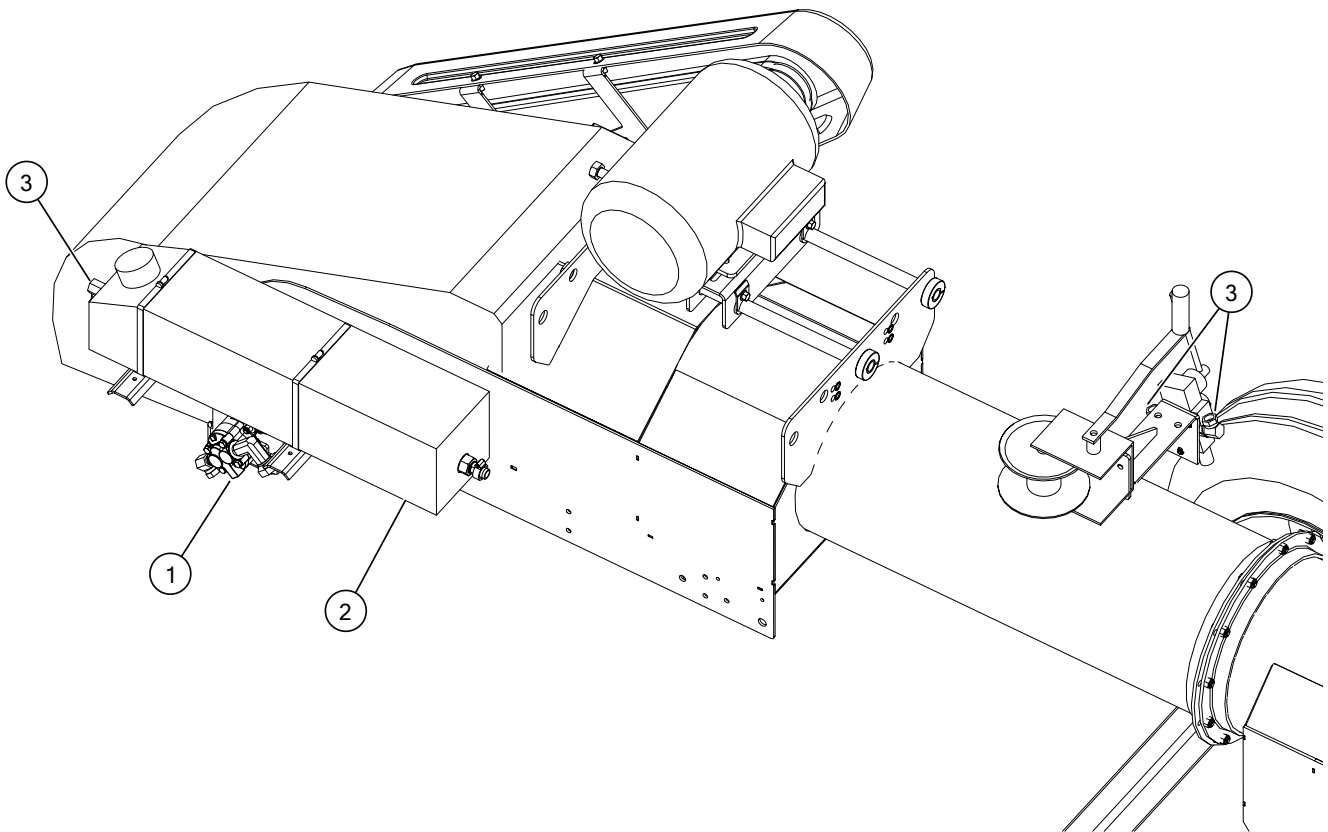
Installing the hydraulic wet kit for the electric drive requires the completion of the following tasks:

Step	Task
1	Install the Hydraulic Pump
2	Install the Hydraulic Tank
3	Install the Hydraulic Fittings into the Flow Controller
4	Install the Hoses

Note

The hoses are not shown in this image. Refer to [Section 2.3.4 – Install the Hoses on page 34](#) for hose routing and installation.

Figure 15. Hydraulic Wet Kit for the Electric Drive Overview

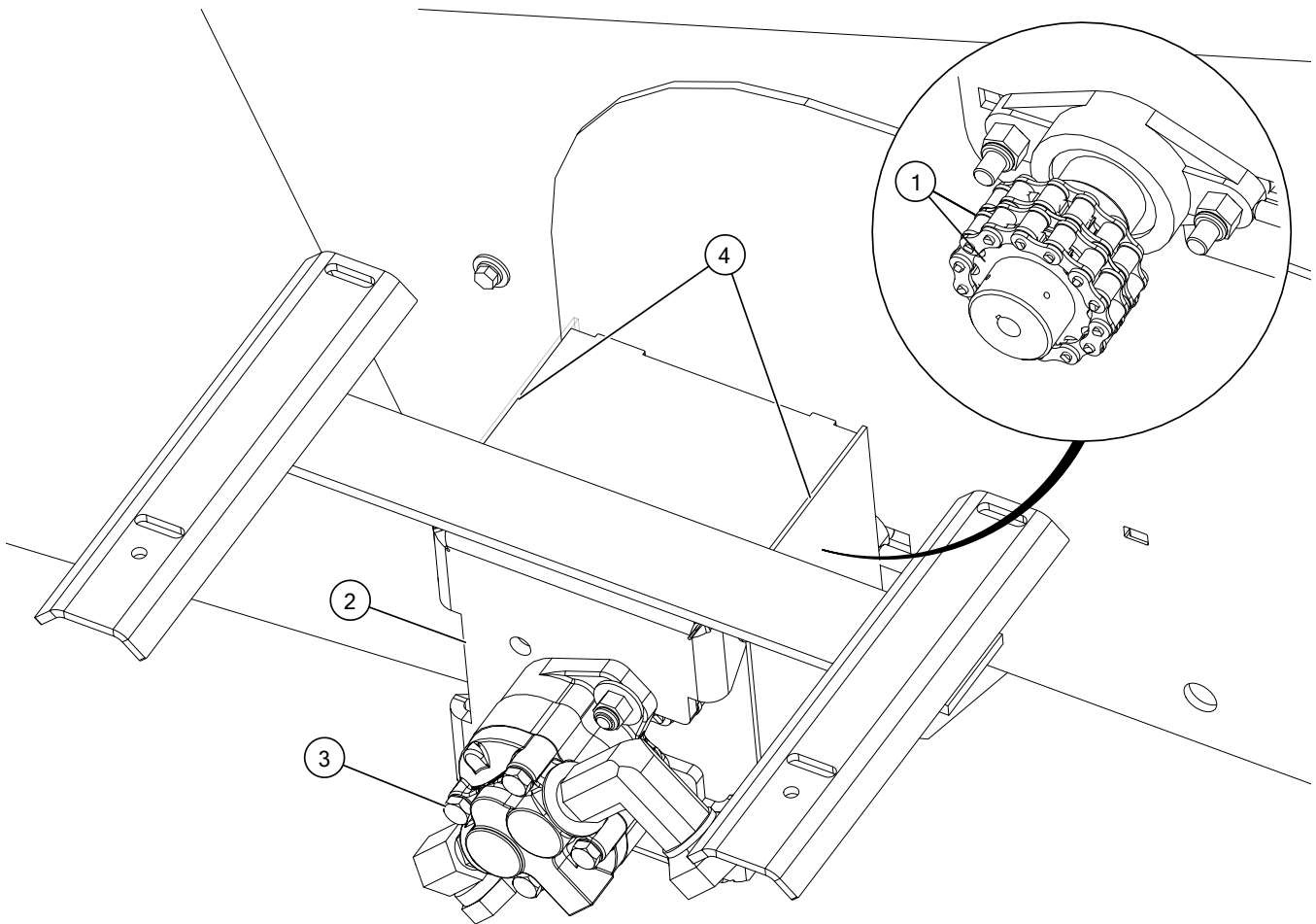


2.3.1 Install the Hydraulic Pump

Installing the hydraulic pump requires the completion of the following tasks:

Step	Task
1	Install the Sprockets, Keys, and Chain Couplers
2	Install the Hydraulic Pump Mount
3	Install the Hydraulic Pump
4	Install the Hydraulic Pump Side Guards

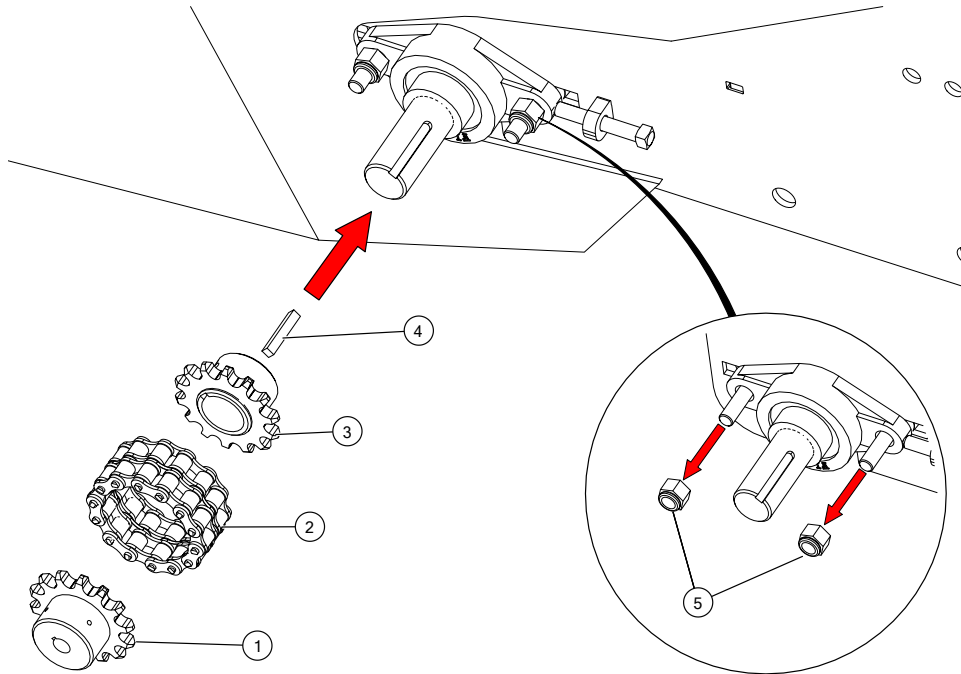
Figure 16. Hydraulic Pump Overview



Note

The hydraulic pump mount side guard is not shown in this diagram. Refer to [Figure 20](#) for more information.

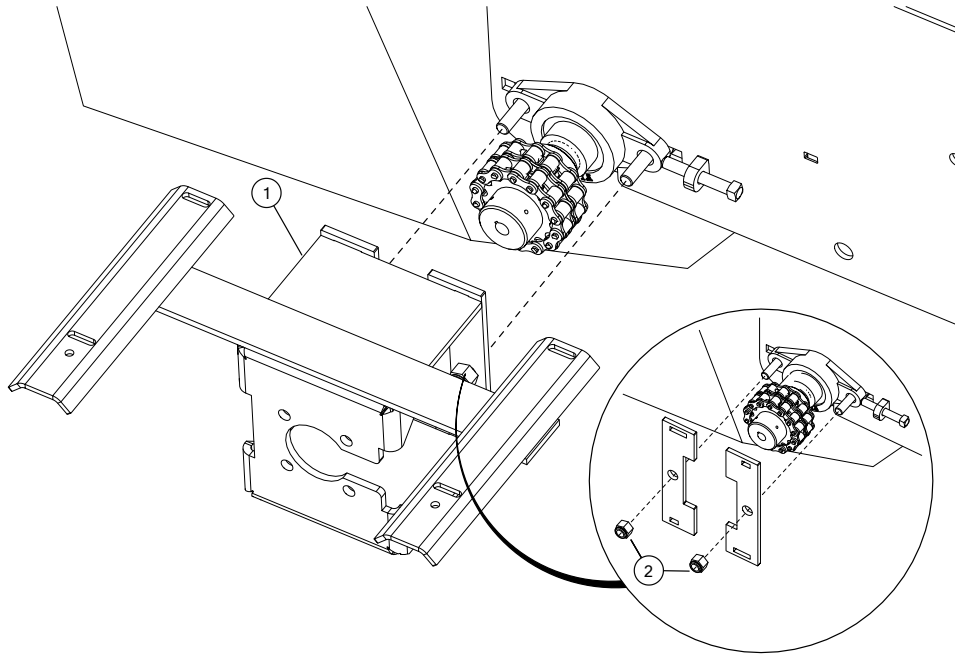
Figure 17. Step 1: Install the Sprockets, Keys, and Chain Couplers



Item	Description
1	1/4" Sprocket
2	1/4" X 1-1/2" Rectangle Key
3	1-1/4" Sprocket
4	Chain Coupler
5	5/8" Lock Nut (GR 8) (remove from bearing ¹)

¹ These lock nuts are used in the following step of this procedure.

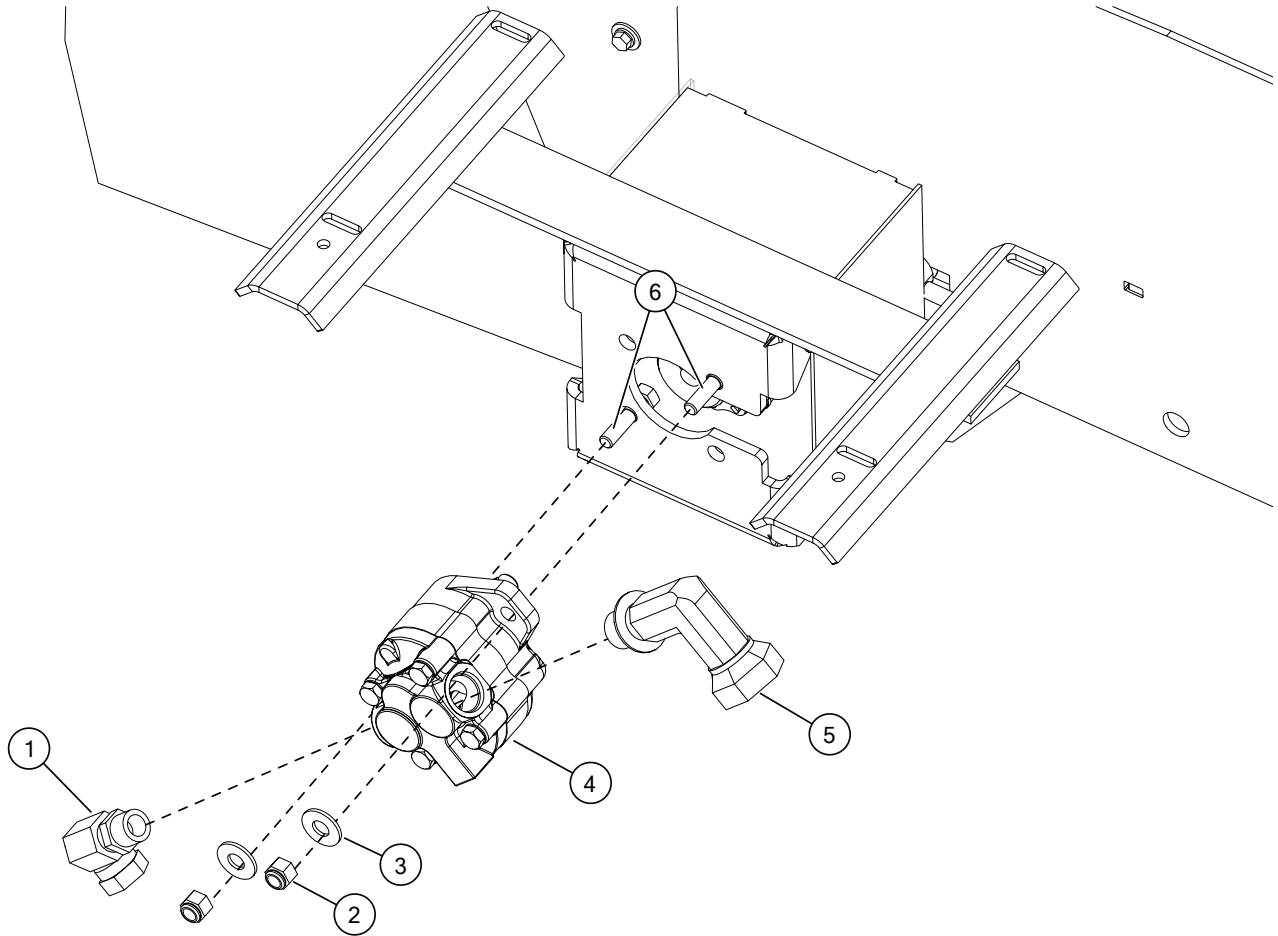
Figure 18. Step 2: Install the Hydraulic Pump Mount



Item	Description
1	Hydraulic Pump Mount
2	5/8" Lock Nut (GR 8) (removed from bearing ¹)

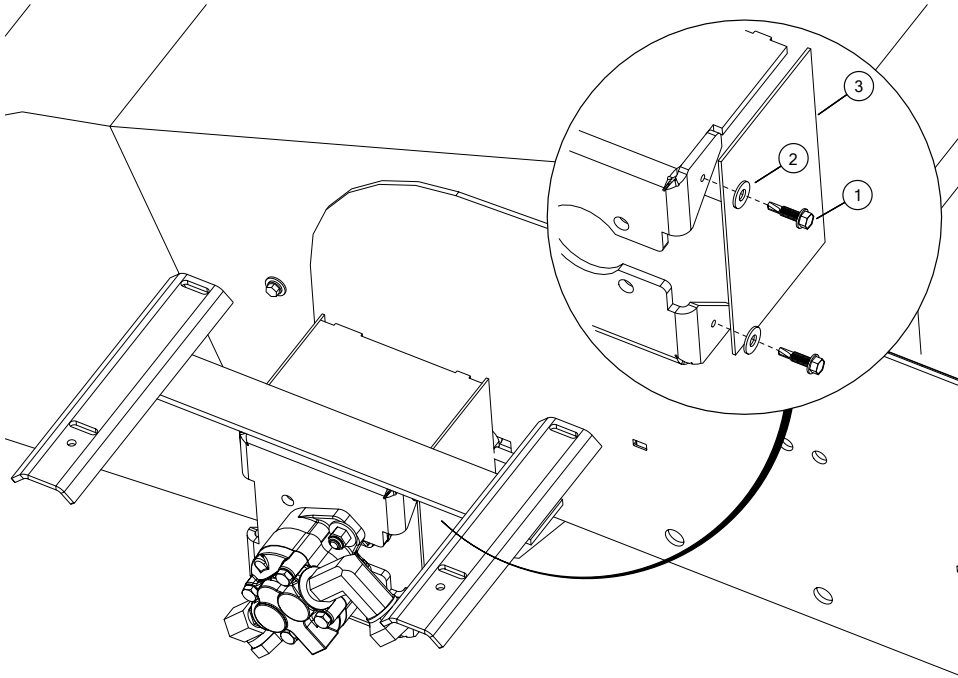
¹ These lock nuts were removed in the previous step of this procedure.

Figure 19. Step 3: Install the Hydraulic Pump and Fittings



Item	Description
1	90° Swivel (1/2" FPT to #8 ORB)
2	3/8" Lock Nut (GR 8)
3	3/8" Flat Washer
4	Hydraulic Pump
5	90° Swivel (1/2" FPT to #10 ORB)
6	3/8" X 1-1/2" Hex Bolt (GR 8)

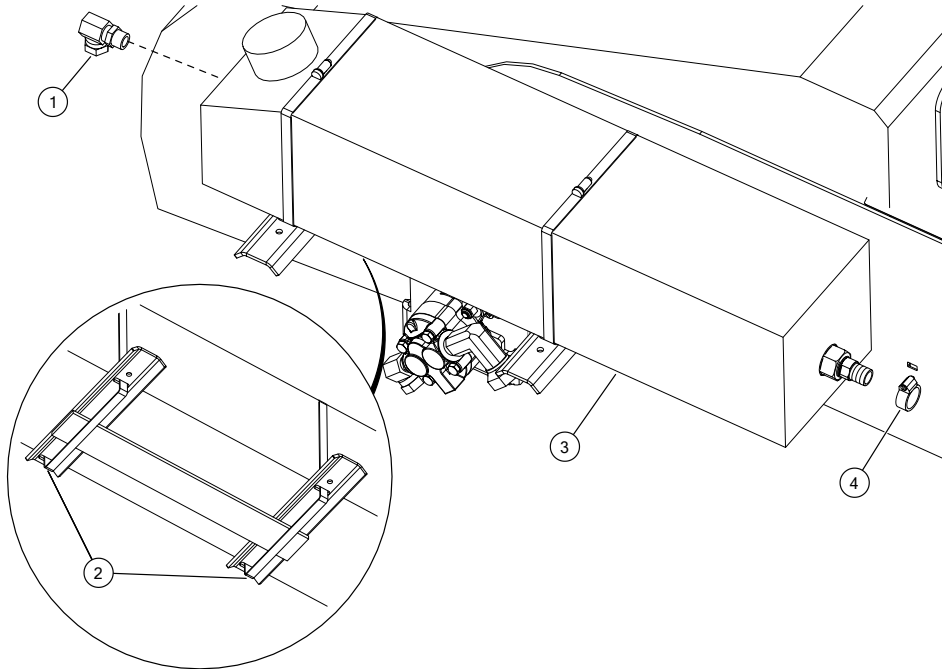
Figure 20. Step 4: Install the Hydraulic Pump Side Guard (on both sides)



Item	Description
1	Tek Screw
2	1/4" Flat Washer
3	1/4" Plastic Sheet

2.3.2 Install the Hydraulic Tank

Figure 21. Step 1: Install the Hydraulic Tank

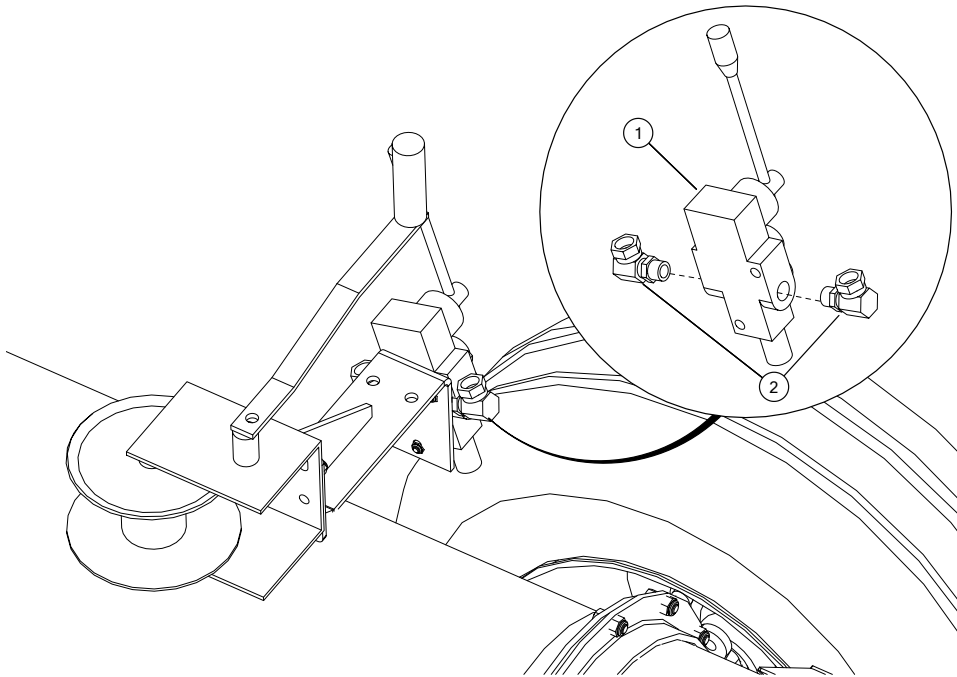


Step	Task
1	90° Swivel (1/2" FPT to #8 ORB Swivel)
2	32" Clamp
3	Hydraulic Tank
4	3/4" Hose Clamp

2.3.3 Install the Hydraulic Fittings into the Flow Controller

Installing the hydraulic fittings into the flow controller requires completion of the following task:

Figure 22. Install the Hydraulic Fittings into the Flow Controller

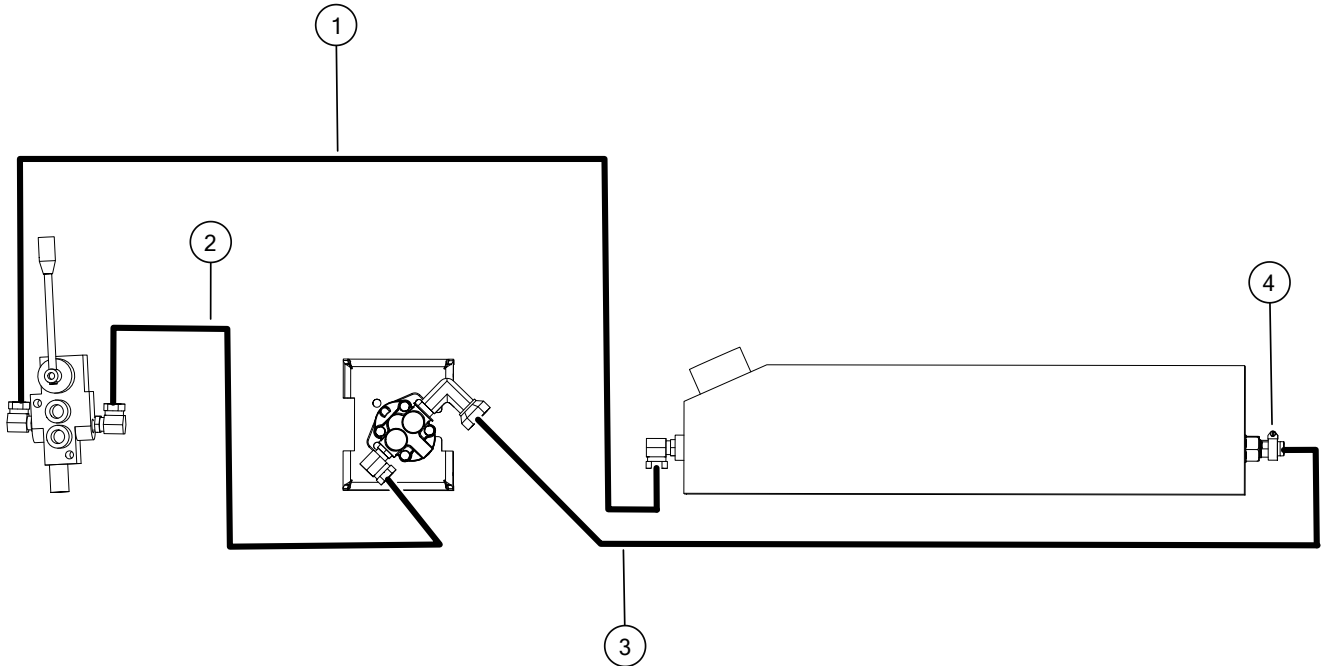


Item	Description
1	Flow Controller
2	90° Swivel (1/2" FPT to #8 ORB)

2.3.4 Install the Hoses

Use the following illustration to correctly install the hoses.

Figure 23. Installing the Hoses



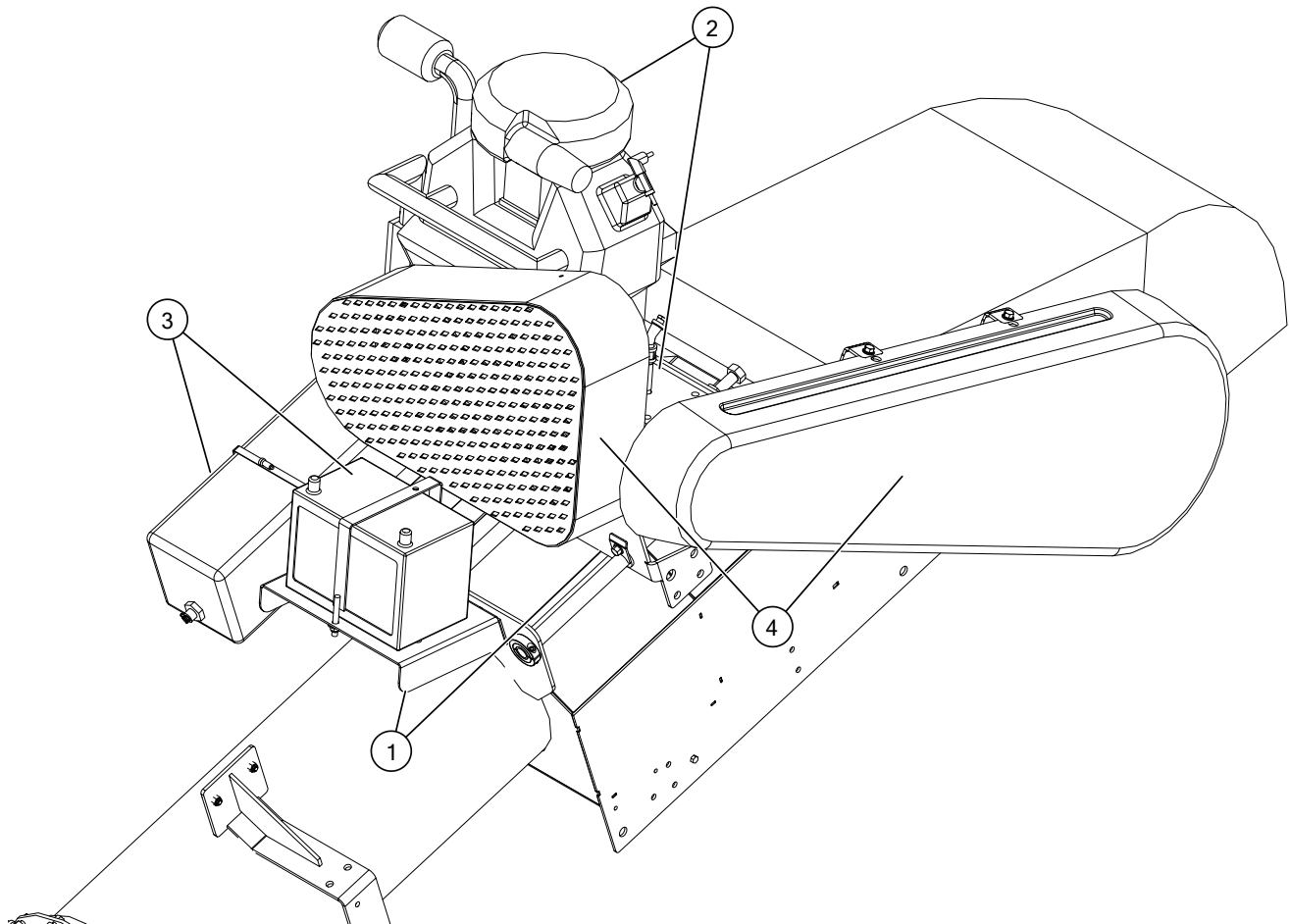
Step	Task
1	1/2" X 9'6" Hose (1/2" MPT X 1/2" MPT PC)
2	1/2" X 7'6" Hose (1/2" MPT X 1/2" MPT)
3	3/4" X 3' Hose (1/2" MPT)
4	Hose Clamp

2.4. Install the Gas Drive

Installing the gas drive requires the completion of the following tasks:

Step	Task
1	Install the Drive and Battery Mounts
2	Install the Motor and Gearbox
3	Install the Battery and Fuel Tank
4	Install the Guards

Figure 24. Gas Drive Overview



2.4.1 Install the Drive and Battery Mounts

Installing the drive and battery mounts requires the completion of the following tasks:

Step	Task
1	Prepare the Motor and Gearbox Mount
2	Install the Motor and Gearbox Mount
3	Install the Battery Mount

Figure 25. Motor and Gearbox Mount Overview

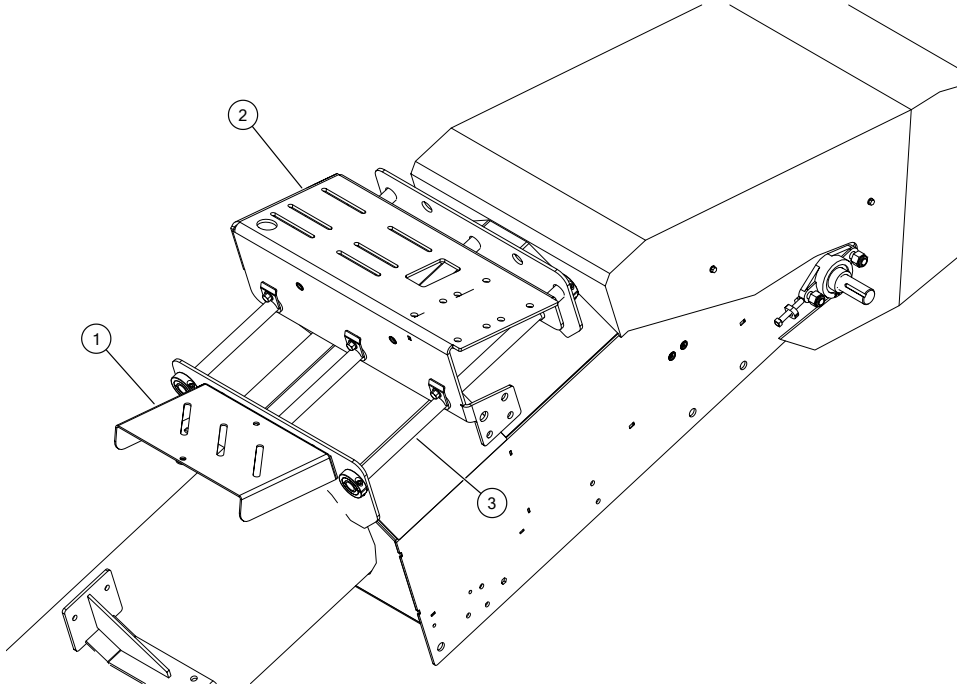
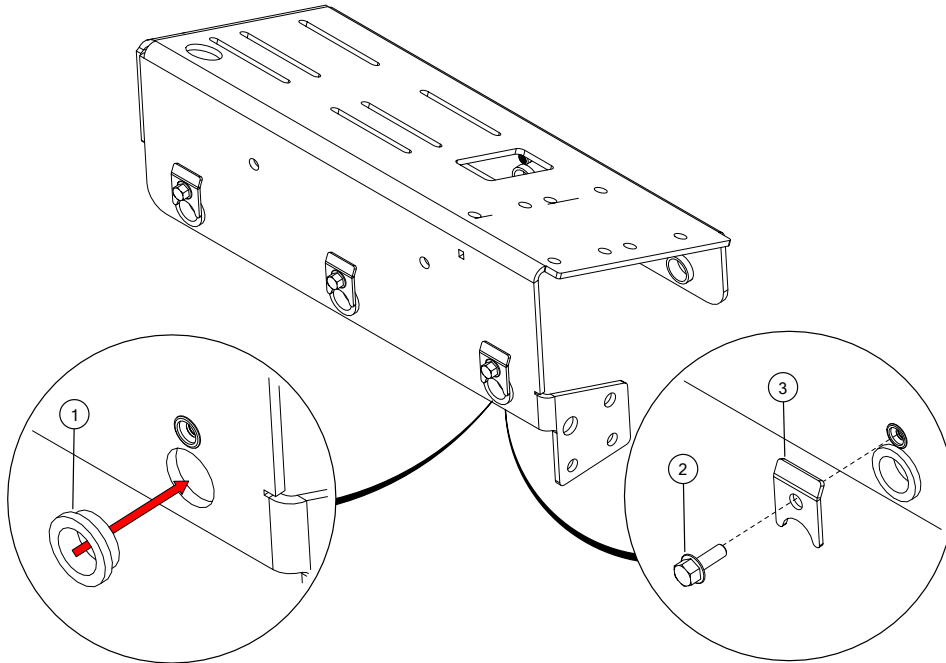
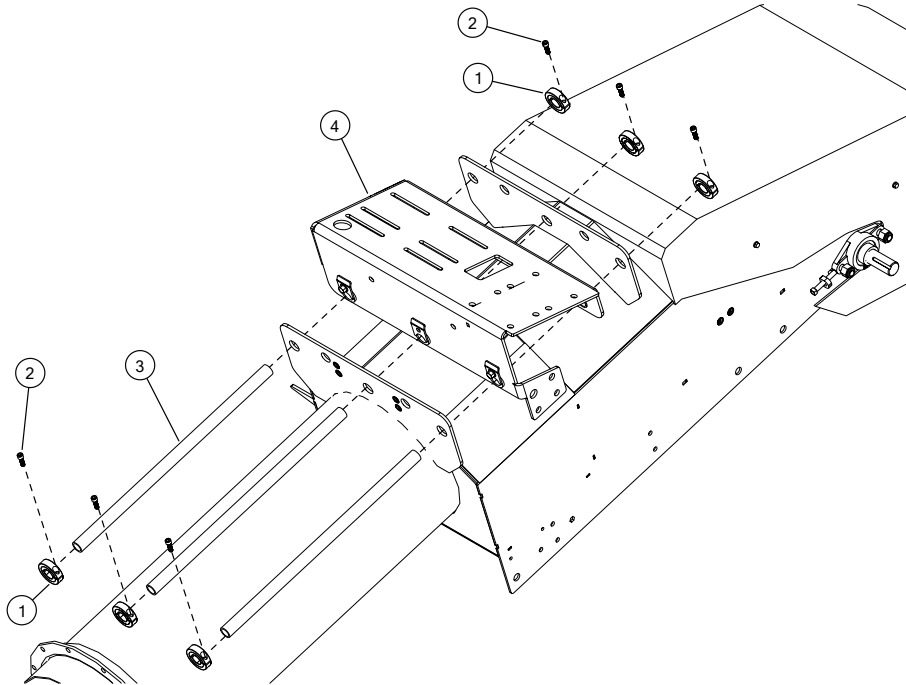


Figure 26. Step 1: Prepare the Motor and Gearbox Mount



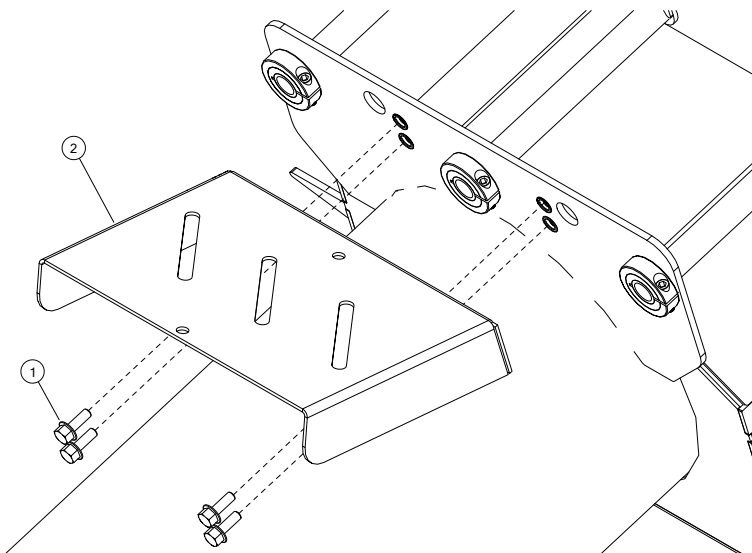
Item	Description	Quantity
1	1" Bushing	6
2	3/8" Flanged Hex Bolt (GR 5)	6
3	Bushing Retainer	6

Figure 27. Step 2: Install the Motor and Gearbox Mount



Item	Description
1	1" Collar
2	5/16" X 1" Screw
3	Motor Mount Rail
	Motor and Gearbox Mount

Figure 28. Step 3: Install the Battery Mount



Item	Description
1	3/8" Flanged Hex Bolt (GR 5)
2	Battery Mount

2.4.2 Install the Motor and Gearbox

Installing the motor and gearbox requires the completion of the following tasks:

Step	Task
1	Install the Guard Mounting Brackets
2	Install the Motor
3	Install the Gearbox
4	Install the Drive Pulleys, Belts, and Tensioning Bolts
5	Install the Motor Pulley, Clutch, and Belts

Figure 29. Gearbox and Motor Overview

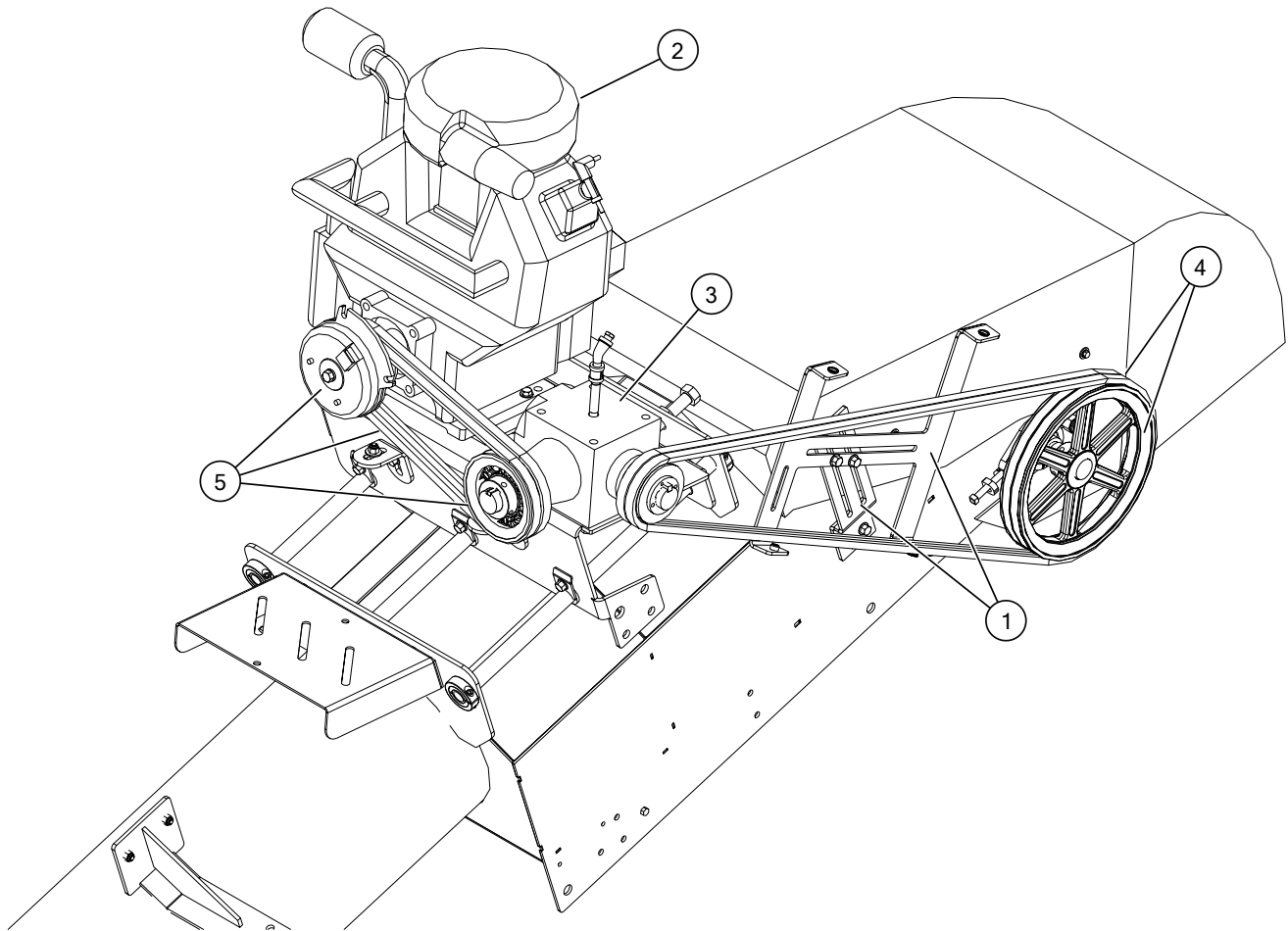
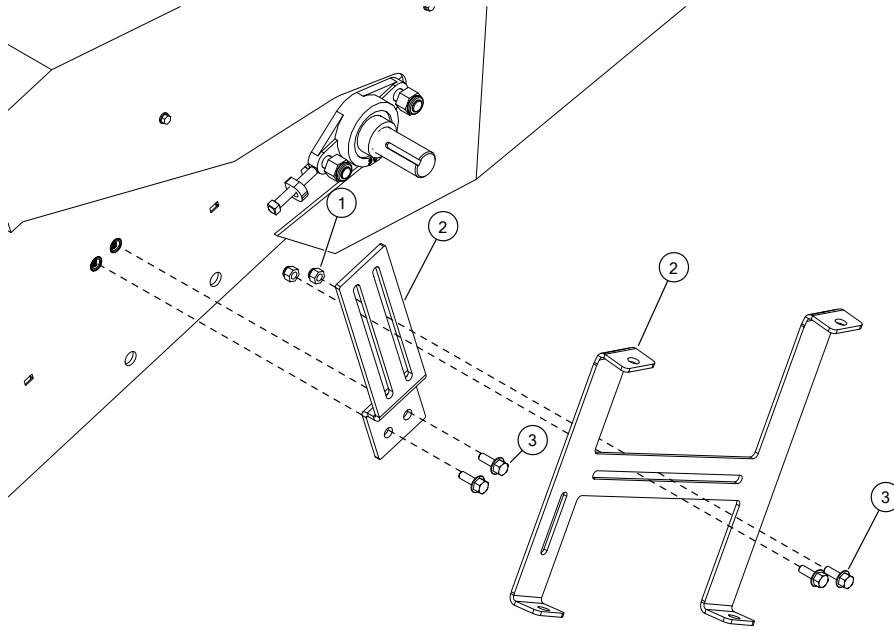
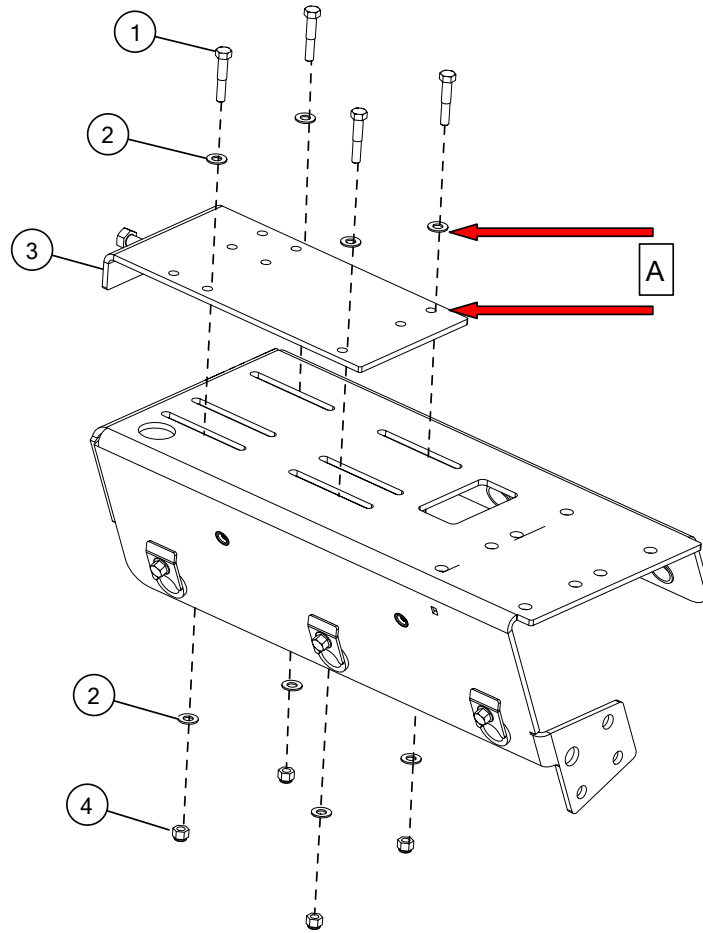


Figure 30. Step 1: Install the Guard Mounting Brackets



Item	Description
1	3/8" Lock Nut (GR 8)
2	Mounting Bracket
3	3/8" X 1" Hex Flange Bolt (GR 8)

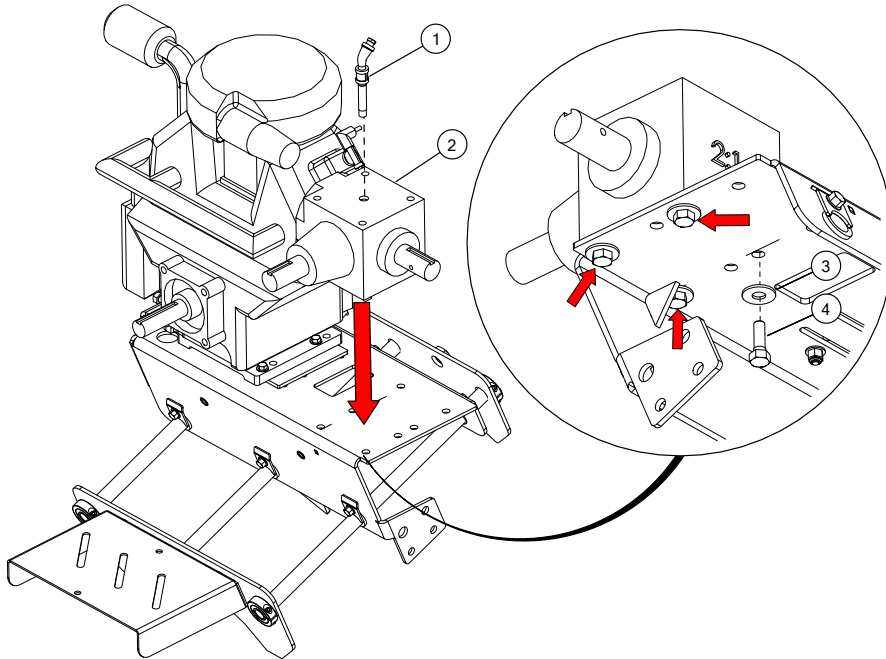
Figure 31. Step 2: Install the Motor



Item	Description
1	3/8" X 2" Hex Bolt (GR 8)
2	3/8" Flat Washer
3	Motor Slide Plate
4	3/8" Lock Nut (GR 8)
A	Motor Base PLate ¹

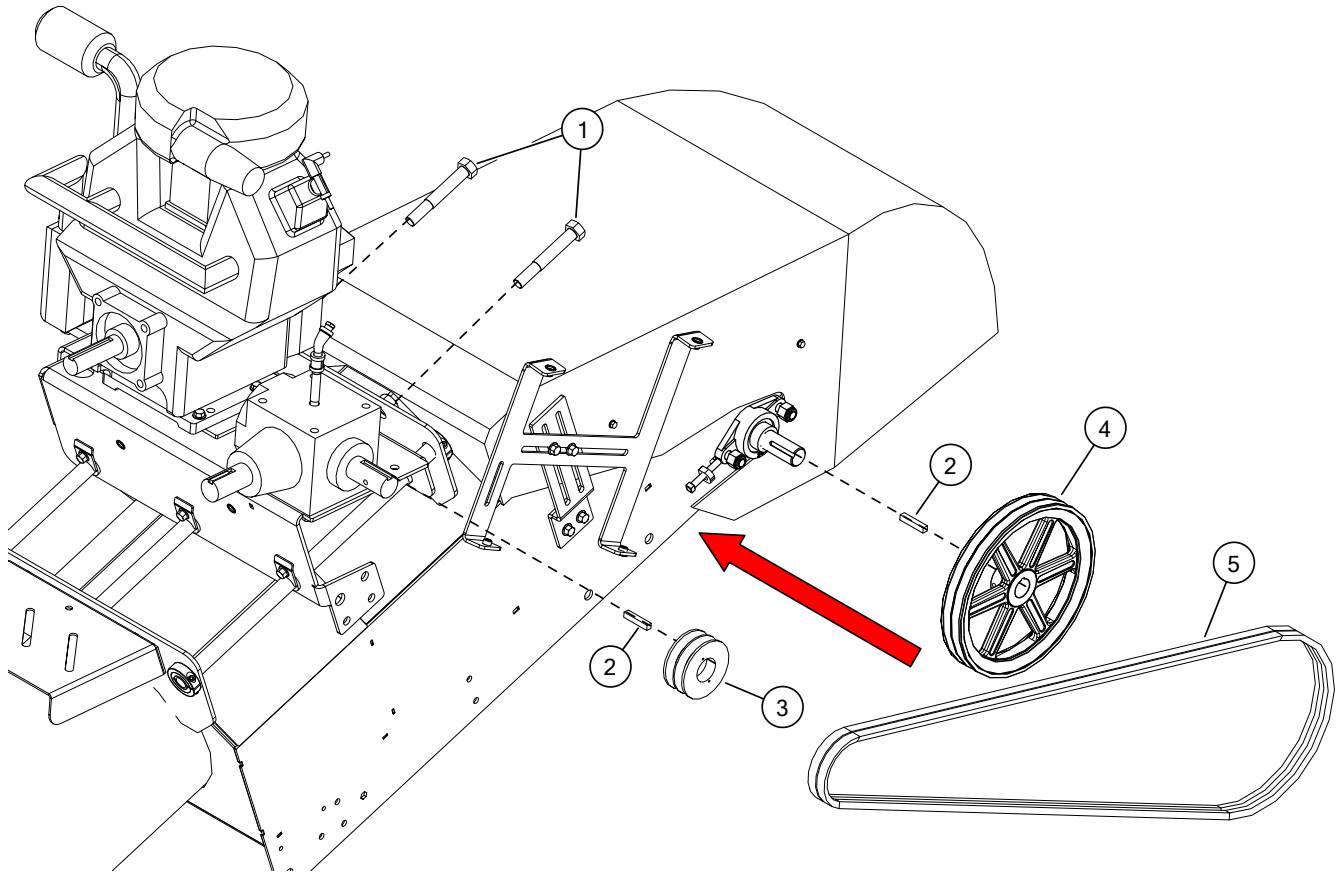
¹Motor type varies. Ensure the motor’s base plate is inserted between the slide plate and washer as indicated by the arrows in [Figure 31](#).

Figure 32. Step 3: Install the Gearbox



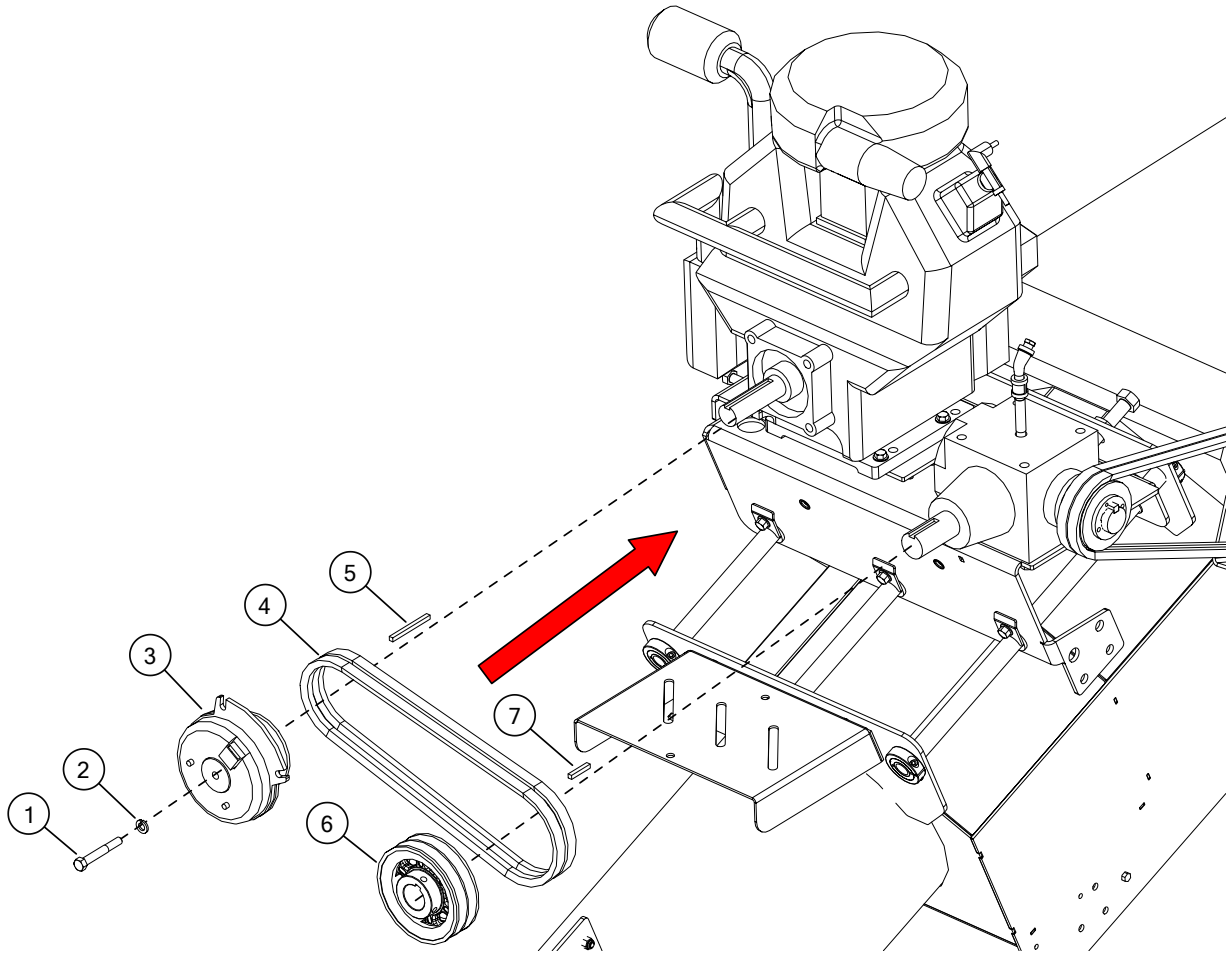
Item	Description
1	Breather
2	Gear Box 4190 2:1 (1.5" SHAFT)
3	1/2" Flat Washer
4	1/2" X 1-1/2" Hex Bolt (GR 8)

Figure 33. Step 4: Install the Drive Pulleys, Belts, and Tensioning Bolts



Item	Description
1	3/4" X 5" Tensioning Hex Bolt (GR 8)
2	3/8" X 2" Key
3	4" Double Pulley
4	12" Double Pulley
5	Belts

Figure 34. Step 5: Install the Motor Pulley, Clutch, and Belts



Item	Description
1	7/16" X 3" Hex Bolt (GR 8)
2	7/16" Lock Washer
3	Electric Clutch
4	Belts
5	1/4" X 3" Key
6	6" Double Pulley (1-1/2" Bore)
7	1/4" X 1-1/2" Key

2.4.3 Install the Battery and Fuel Tank

Installing the battery and fuel tank requires the completion of the following tasks:

Step	Task
1	Install the Fuel Tank
2	Install the Battery

Figure 35. Battery and Fuel Tank Overview

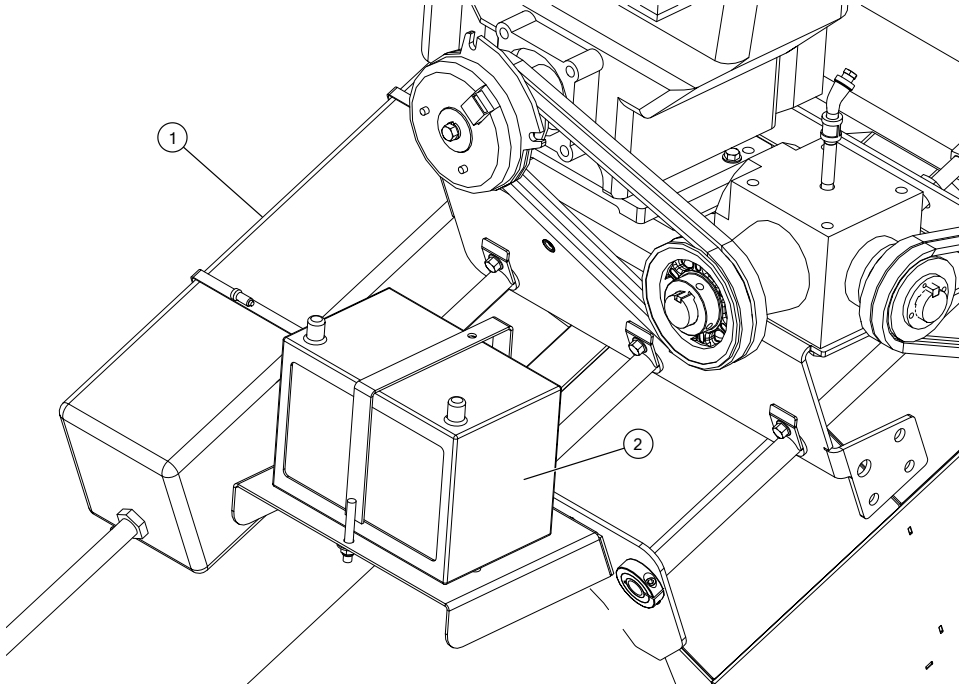
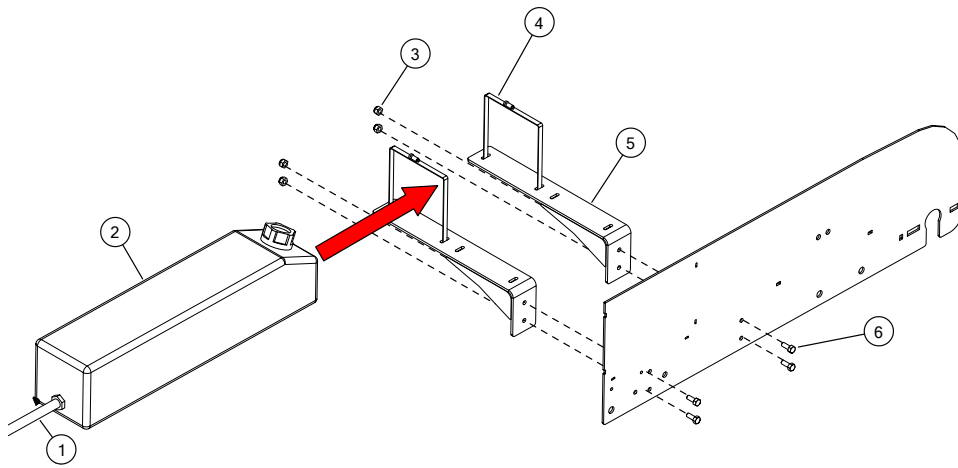
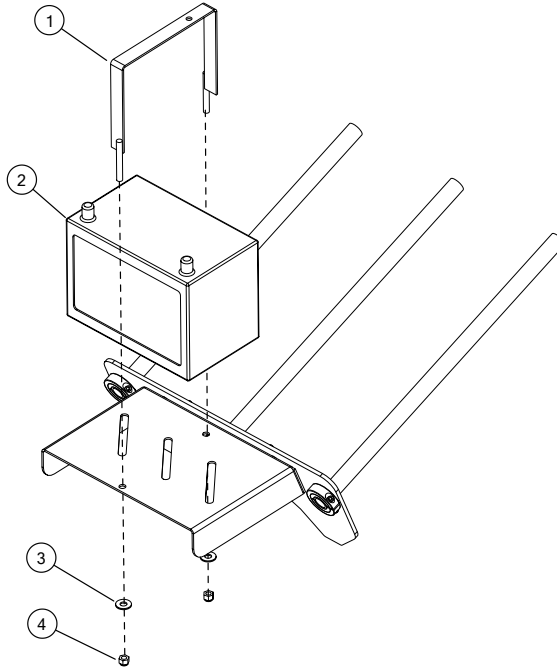


Figure 36. Step 1: Install the Fuel Tank



Item	Description
1	Fuel Hose and Clamps
2	Fuel Tank
3	7/16" Lock Nut
4	32" Clamp
5	Fuel Tank Mounting Bracket
6	7/16" X 1" Hex Bolt (GR 8)

Figure 37. Step 2: Install the Battery



Item	Description
1	Battery Clamp
2	Battery
3	3/8" Flat Washer
4	3/8" Lock Nut

2.4.4 Install the Guards

Installing the guards requires the completion of the following tasks:

Step	Task
1	Install the Motor Guard
2	Install the Drive Belt Guard

Figure 38. Guards Overview

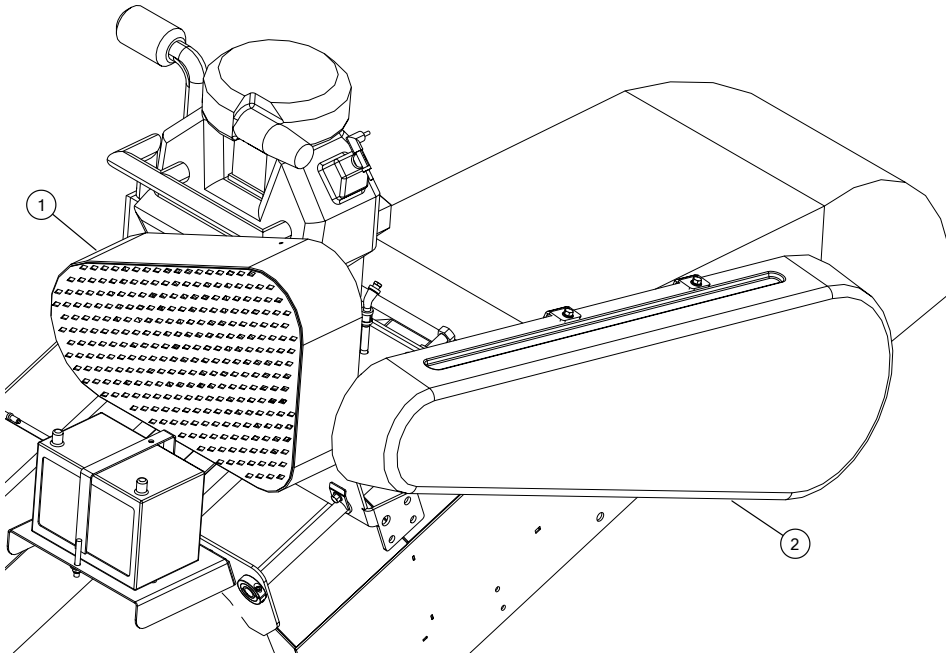
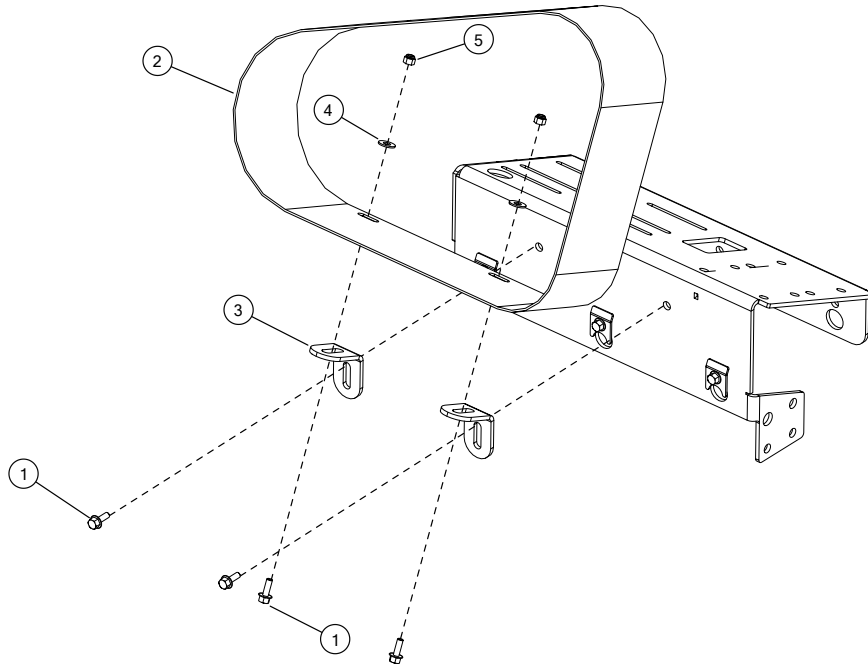


Figure 39. Step 1: Install the Motor Guard

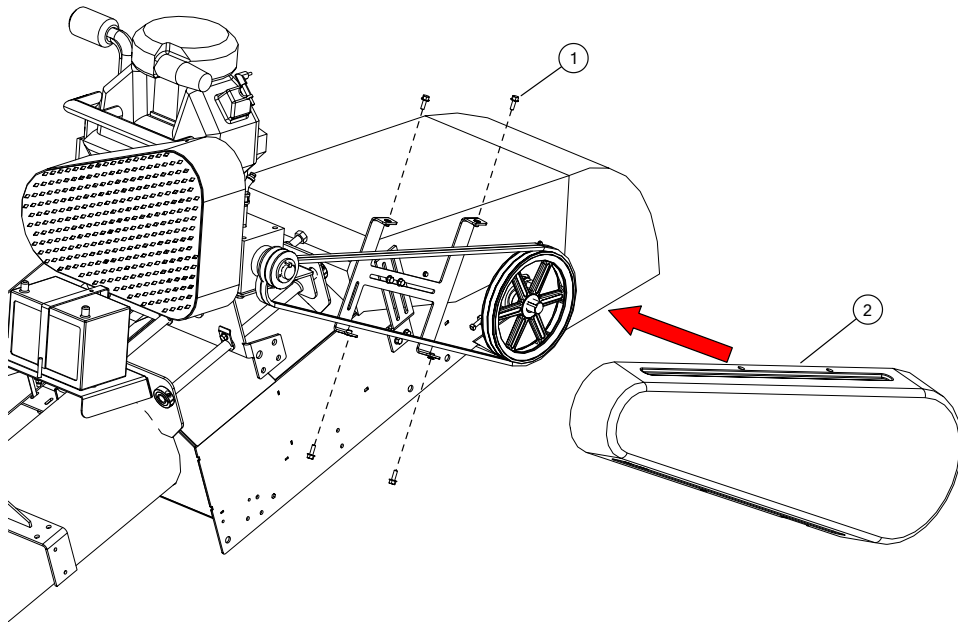


Note

The grate on the gearbox and motor guard has been removed for illustration purposes.

Item	Description
1	3/8" X 1" Hex Bolt (GR 5)
2	Gearbox and Motor Guard
3	Guard Mounting Bracket
4	3/8" Flat Washer
5	3/8" Lock Nut

Figure 40. Step 2: Install the Drive Belt Guard



Item	Description
1	3/8" X 1" Hex Bolt (GR 5)
2	Drive Belt Guard

2.5. Install the Hydraulic Drive

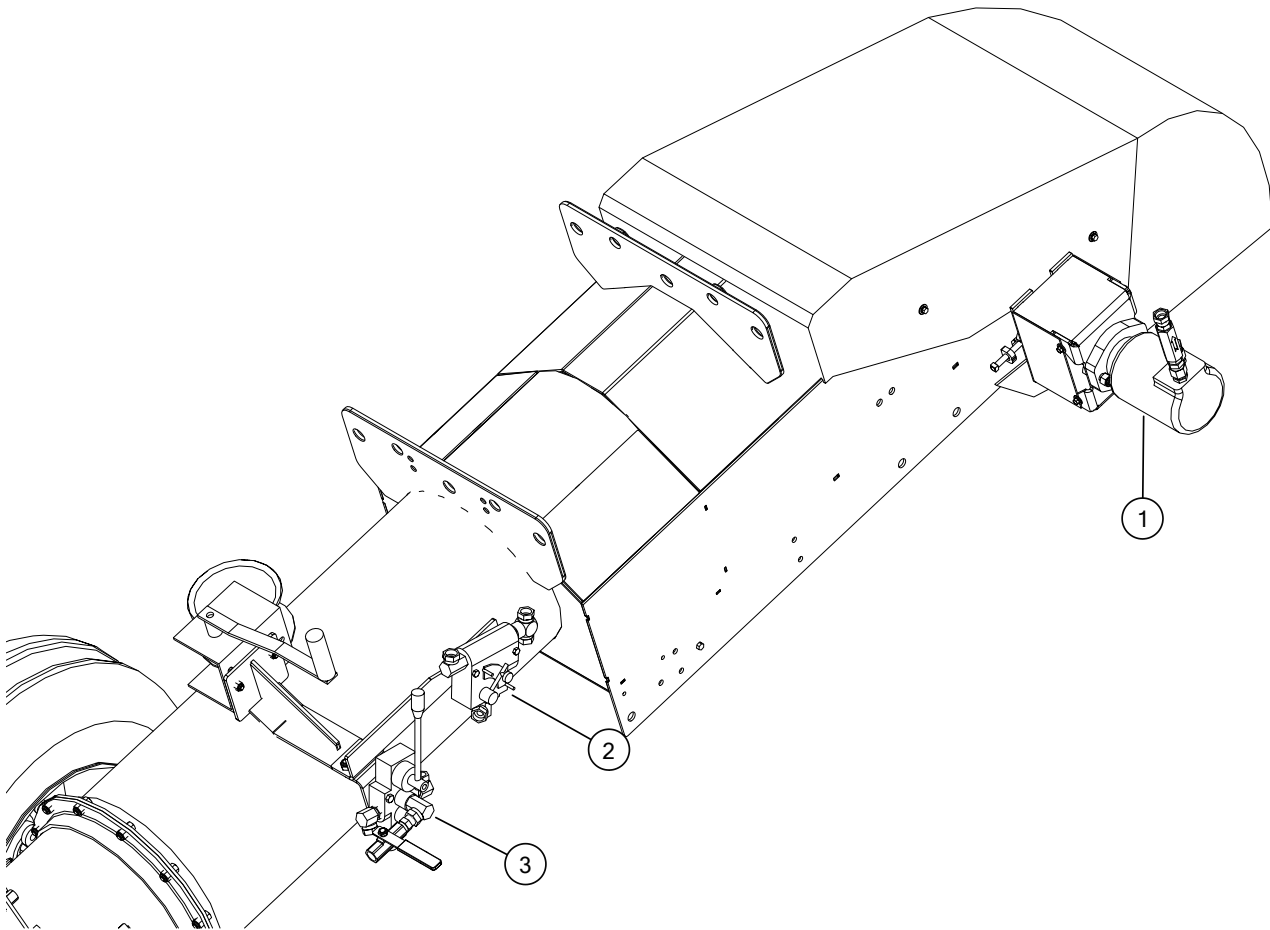
Installing the hydraulic drive requires the completion of the following tasks:

Step	Task
1	Install the Hydraulic Motor
2	Install the Flow Controller
3	Install the Hydraulic Fittings into the Lift Control
4	Install the Hoses

Note

The hoses are not shown in this image. Refer to [Figure 52](#) for hose routing and installation.

Figure 41. Hydraulic Drive Overview

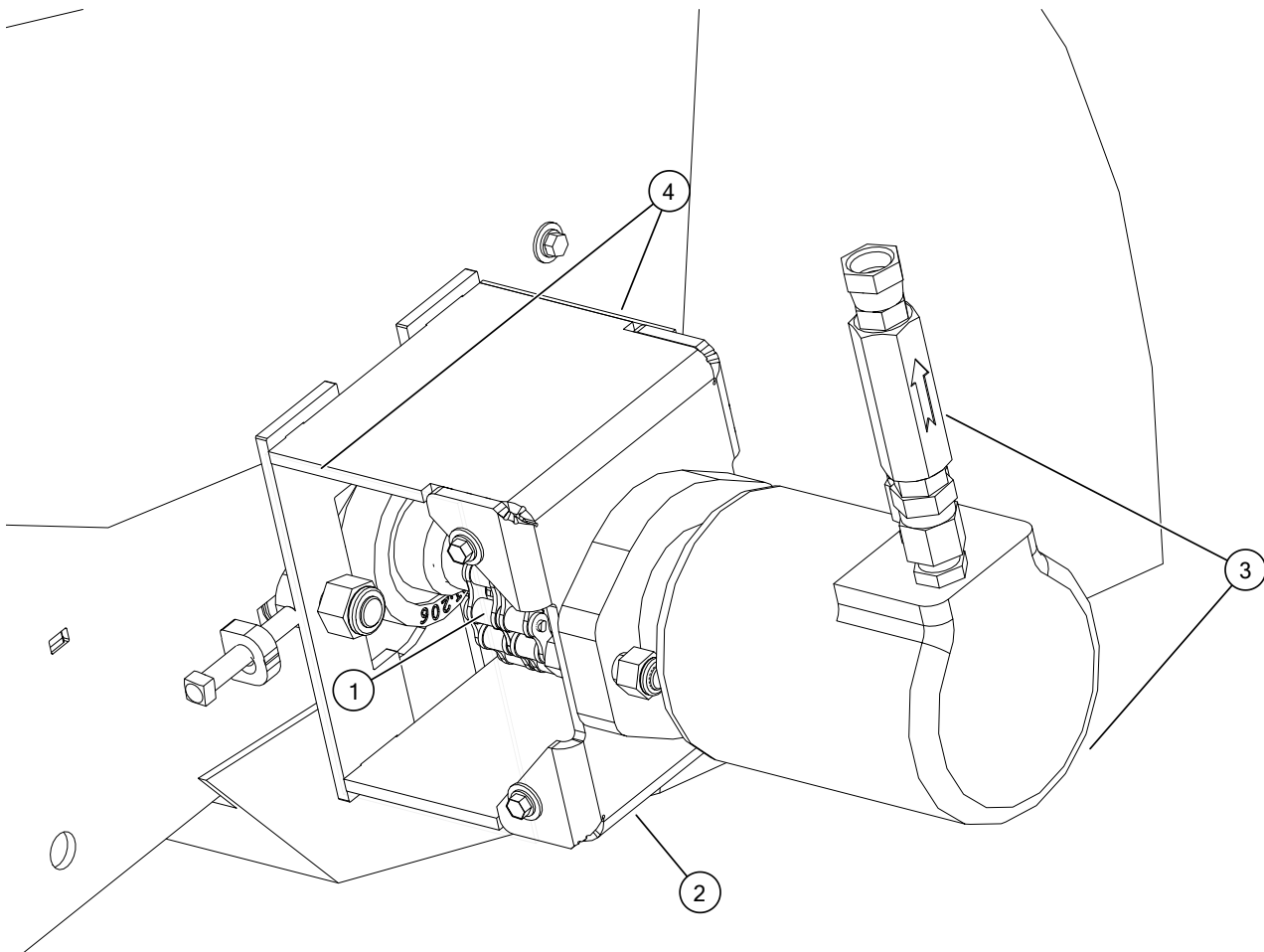


2.5.1 Install the Hydraulic Motor

Installing the hydraulic motor requires the completion of the following tasks:

Step	Task
1	Install the Sprockets, Keys, and Chain Couplers
2	Install the Hydraulic Motor Mount
3	Install the Hydraulic Motor and Fittings
4	Install the Hydraulic Motor Side Guards

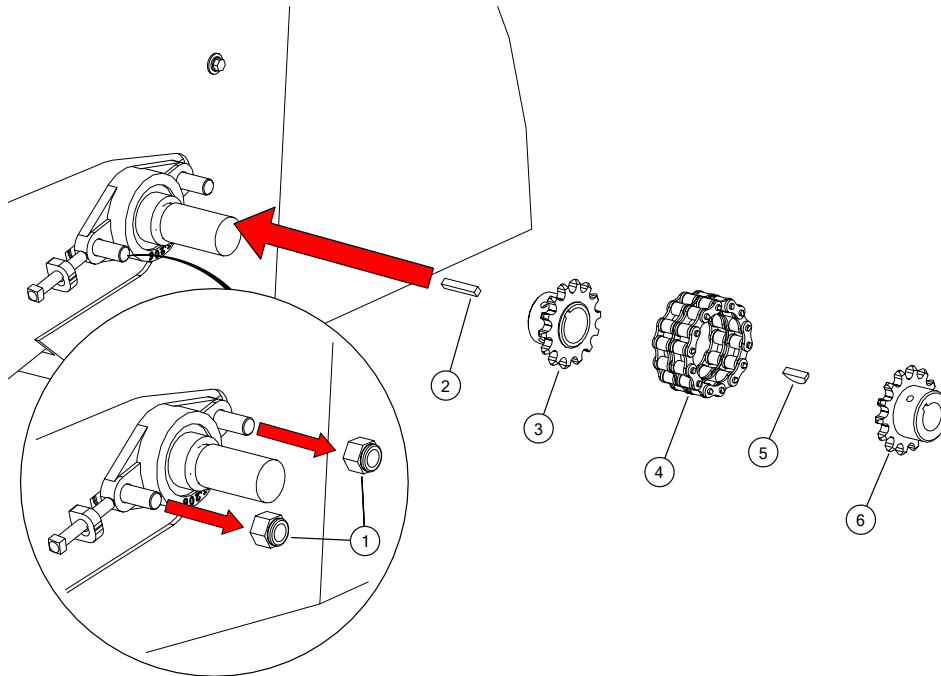
Figure 42. Hydraulic Motor Overview



Note

The hydraulic motor mount side guard is not shown in this diagram. Refer to [Figure 46](#) for more information.

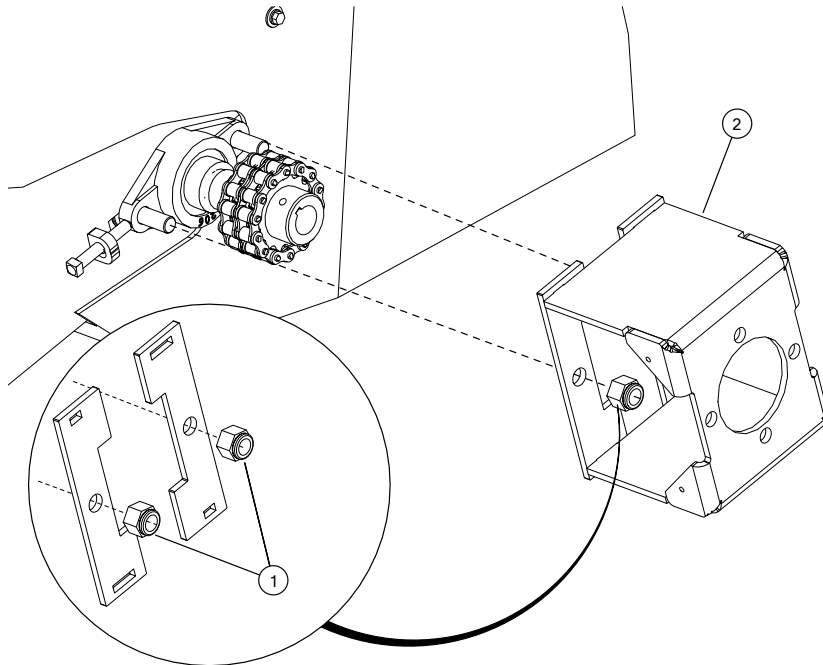
Figure 43. Step 1: Install the Sprockets, Keys, and Chain Couplers



Item	Description
1	5/8" Lock Nut (GR 8) (remove from bearing ¹)
2	1/4" X 1-1/2" Rectangle Key
3	Sprocket
4	Chain Coupler
5	1/4" X 1" Woodruff Key

¹ These lock nuts are used in the next step of this procedure.

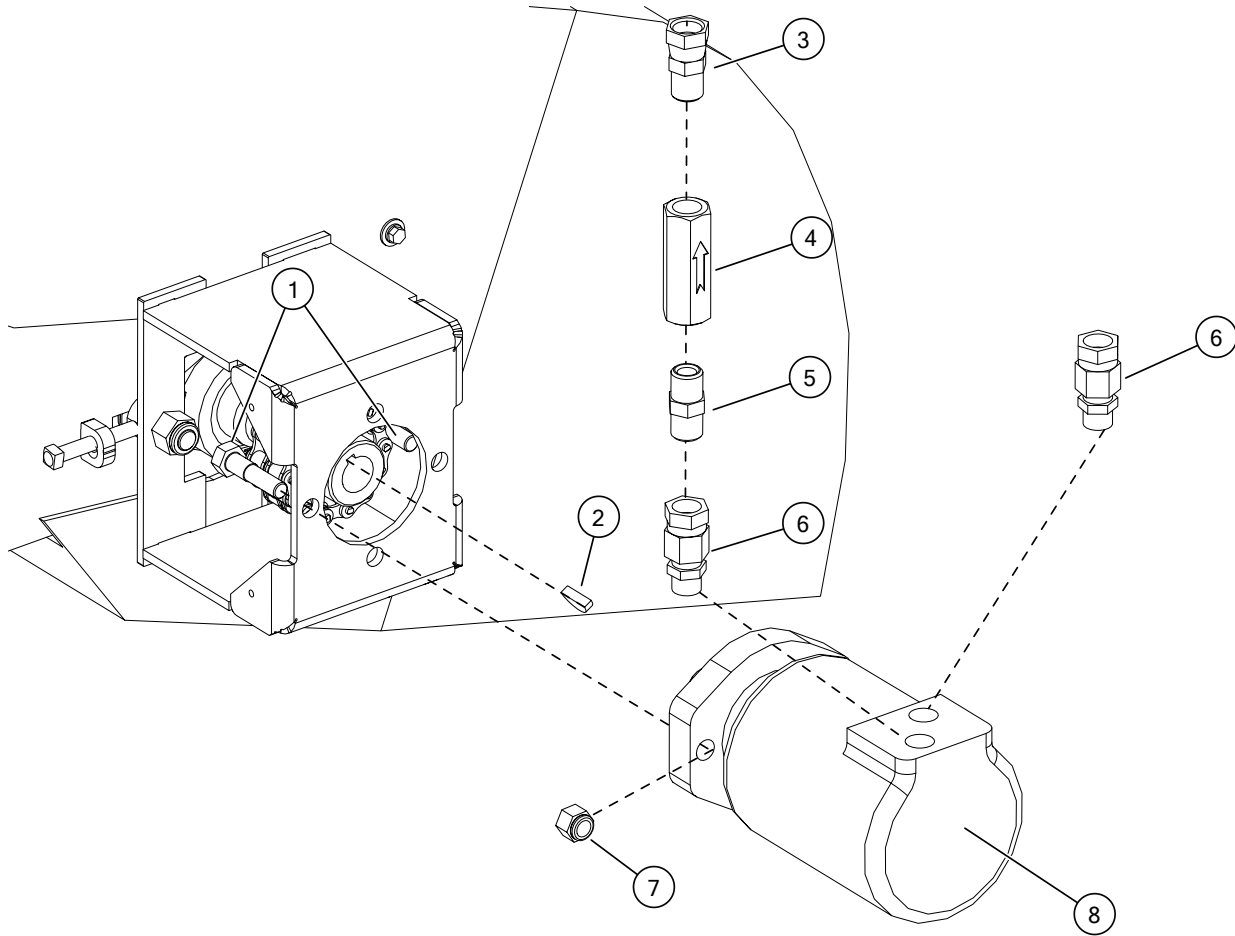
Figure 44. Step 2: Install the Hydraulic Motor Mount



Item	Description
1	5/8" Lock Nut (GR 8) (removed from bearing ¹)
2	Hydraulic Motor Mount

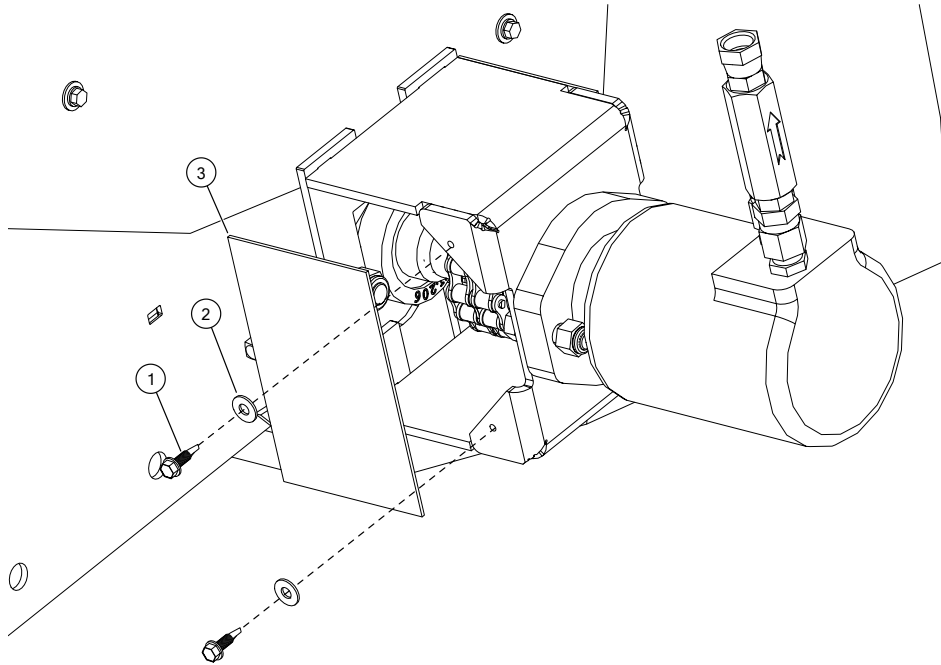
¹ These lock nuts were removed in the previous step of this procedure.

Figure 45. Step 3: Install the Hydraulic Motor and Fittings



Item	Description
1	1/2" X 2" Hex Bolt (GR 8)
2	1/4" X 1" Woodruff Key
3	1/2" Swivel (straight)
4	1/2" Check Valve (no reverse flow)
5	1/2" PT Hex Nipple
6	1/2" #10 ORB X FPT
7	1/2" Lock Nut (GR 8)
8	Hydraulic Motor

Figure 46. Step 4: Install the Hydraulic Motor Side Guard (on both sides)



Item	Description
1	Tek Screw
2	1/4" Flat Washer
3	1/4" Plastic Sheet

2.5.2 Install the Flow Controller

Installing the flow controller requires the completion of the following tasks:

Step	Task
1	Install the Flow Controller Bracket
2	Install the Hydraulic Fittings into the Flow Controller
3	Install the Flow Controller

Figure 47. Flow Controller Overview

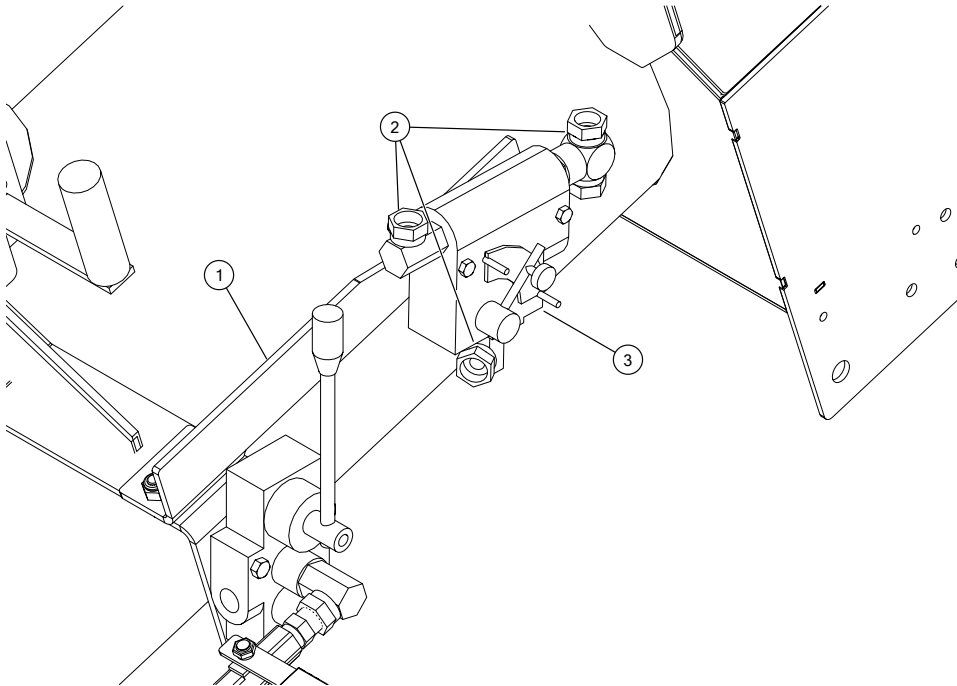
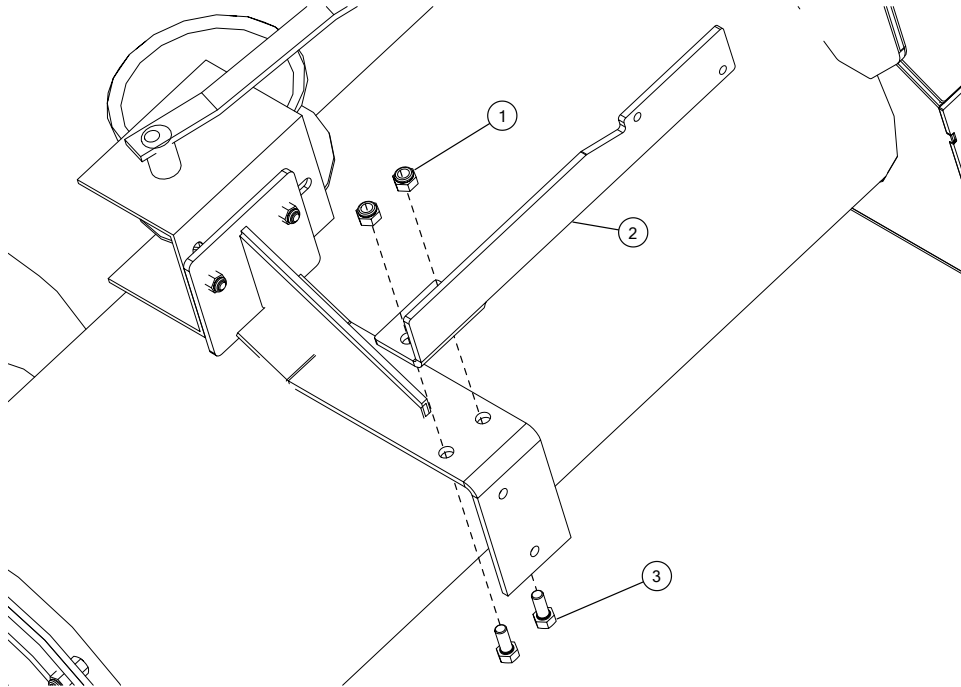
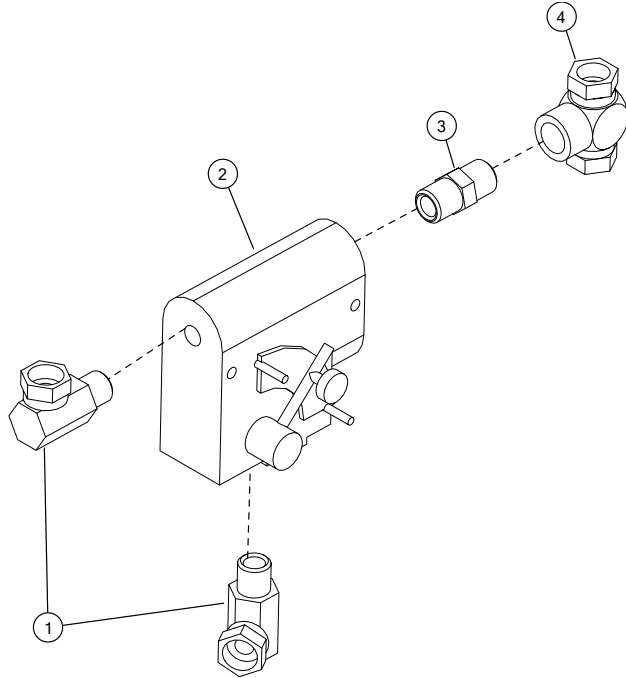


Figure 48. Step 1: Install the Flow Controller Bracket



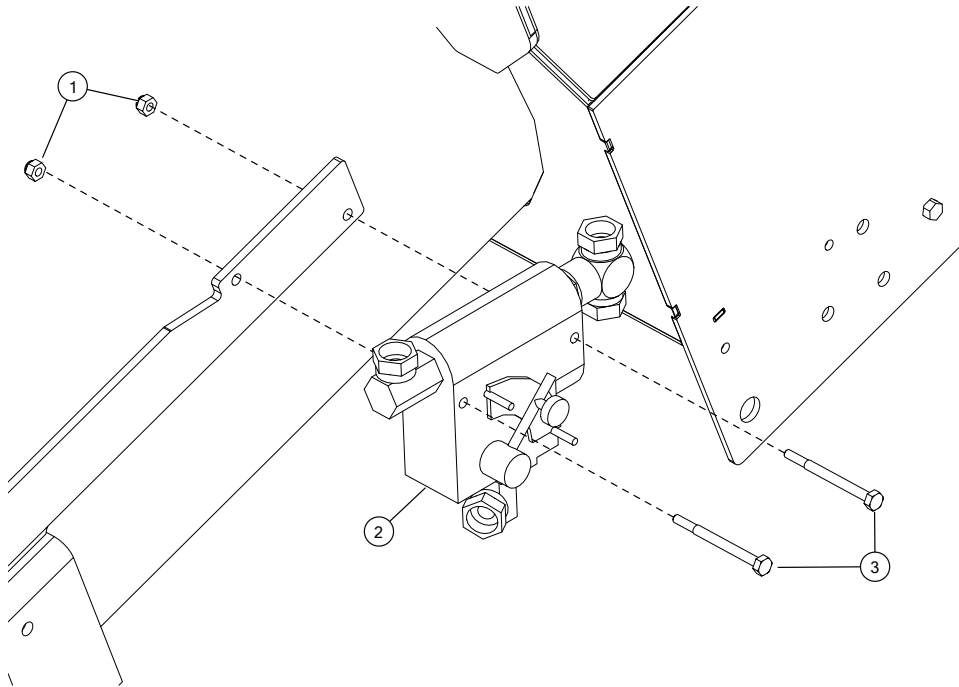
Item	Description
1	7/16" Lock Nut (GR 8)
2	Flow Controller Bracket
3	7/16" X 1" Hex Bolt (GR 8)

Figure 49. Step 2: Install the Hydraulic Fittings into the Flow Controller



Item	Description
1	90° Swivel (1/2" PT)
2	Flow Controller
3	Hex Nipple (1/2" PT)
4	Tee—Swivel (1/2" Fem)

Figure 50. Step 3: Install the Flow Controller

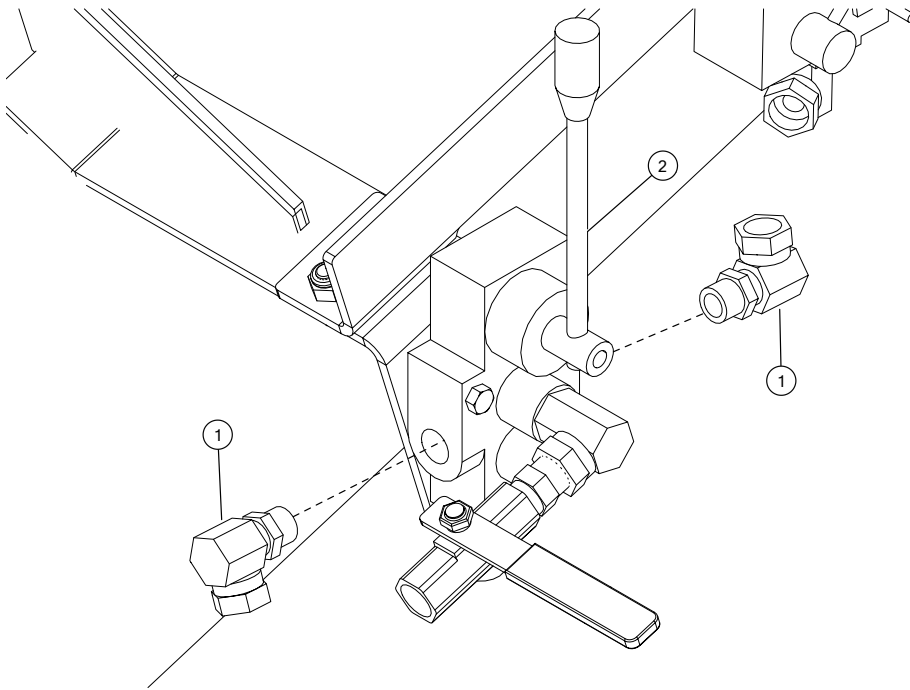


Item	Description
1	1/4" X 3" Hex Bolt (GR 8)
2	Flow Controller with Hydraulic Fittings Installed
3	1/4" Lock Nut (GR 8)

2.5.3 Install the Hydraulic Fittings into the Lift Control

Installing the hydraulic fittings into the lift control requires the following task be completed.

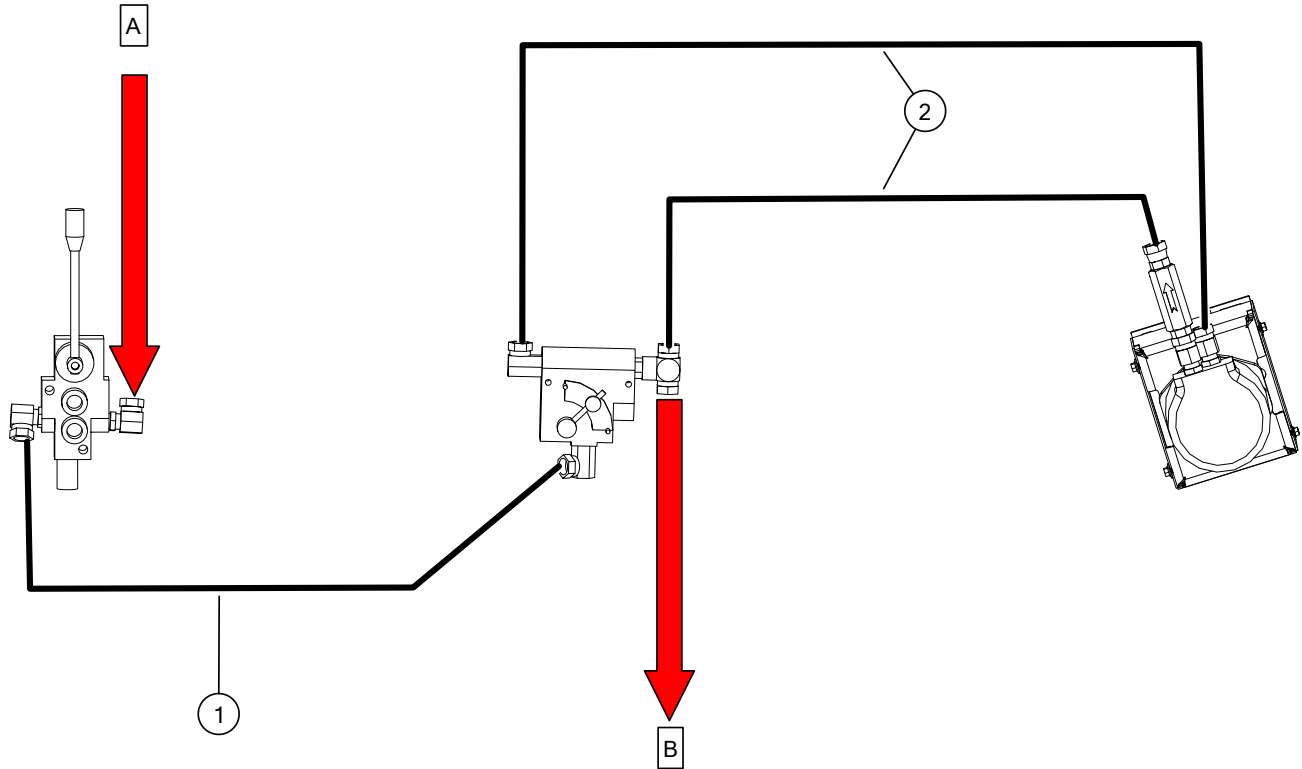
Figure 51. Step 1: Install the Hydraulic Fittings into the Lift Control



Item	Description
1	90° Swivel (#10 ORB to 1/2" FPT)
2	Lift Control

2.5.4 Install the Hoses

Figure 52. Installing the Hoses



Item	Description
1	1/2" X 1'10" Hose (1/2" MPT to 1/2" MPT PC)
2	1/2" X 6'7" Hose (1/2" MPT to 1/2" MPT PC)
A	Supply In (pressure)
B	Supply Out (return)

3. Limited Warranty

This warranty relates to Belt Conveyors (the “Product”) sold by AGI (referred to herein as the “Seller”) and applies only to the first user of the Product (meaning a purchaser directly from the Seller or from an authorized dealer or distributor of the Product, referred to herein as the “Buyer”).

This warranty shall only be effective if properly registered with the Seller in accordance with information provided to the Buyer at the time of sale.

1. The Seller warrants to the Buyer that the Product is free from defects in material and workmanship **under normal and reasonable use** and in accordance with manufacturer’s manual.
2. This warranty applies only to defects in materials and workmanship and not to damage incurred in shipping or handling, through normal wear and tear, or damage due to causes beyond the control of the Seller such as lightning, fire, flood, wind, earthquake, excessive voltage, mechanical shock, water damage, or damage arising out of abuse, alteration, improper assembly, improper installation, improper maintenance or improper repair of the Product.
3. **The warranty period for the Product shall be two years from delivery of the Product to the Buyer where the Product is used in a normal farm operation. First year of warranty coverage of parts and repair labour, second year warranty coverage of parts only. Warranty period for the Product shall be 90 days from delivery of the Product to the Buyer where the Product is used in a commercial operation. No warranty is given where the Product was used to convey canola.** In the event that any part incorporated into the Product is manufactured and sold to the Seller by a third party vendor, such part is only warranted to the extent of the warranty given by that third party.
4. This warranty does not obligate the Seller to bear costs of travel in replacing defective parts.
5. The obligations set forth in this warranty are conditional upon the Buyer promptly notifying the Seller of any defect and completing reasonably required documentation and, if required, promptly making the Product available for correction.
6. The total liability of the Seller on any claim, whether in contract, tort or otherwise, arising out of, connected with, or resulting from the manufacture, sale, delivery, repair, replacement or use of the Product or any part thereof **shall not exceed the price paid for the Product** and the Seller shall not be liable for any special indirect, incidental or consequential damages caused by reason of the installation, modification, use, repair, maintenance or mechanical failure of the Product. **Consequential or special damages as used herein include, but are not limited to, lost or damaged products or goods, costs of transportation, lost sales, lost orders, lost income, increased overhead, labor and incidental costs and operational inefficiencies.**
7. The foregoing warranty is the entire warranty of the Seller to the Buyer and the Buyer shall not be entitled to rely upon any representation or warranty contained in any marketing material of the Seller in respect of the Product. The Seller neither assumes, nor authorizes any other person purporting to act on its behalf to modify or to change this warranty, nor to assume for it any other warranty or liability concerning the Product.

WARRANTY VOID IF NOT REGISTERED

AGI **BATCO**

Shipping: 201 Industrial Drive, Swift Current, Saskatchewan S9H 5R4, CANADA

Mailing: Box 1750, Swift Current, Saskatchewan S9H 4J8, CANADA

Toll-Free: (877) 667-7421 (Canada & USA)

Phone: (306) 773-7779

Fax: (306) 778-2524

Web: www.batcomfg.com

Email: info@batcomfg.com

©Ag Growth International Inc. 2019

Printed in Canada

If you have any comments or questions on this manual, or find an error, email us at comments@aggrowth.com.
Please include the part number listed on the cover page in your message.