



# A250/A251/A255 Wheel Kit

## Assembly and Operator Manual

### Applicable Models:

- Westfield WRX, STX, STX2, W13 Series
- AGI WRX, XTA
- Hutchinson WRX, STX2, W13 Series
- Mayrath WRX, STX2, W13 Series

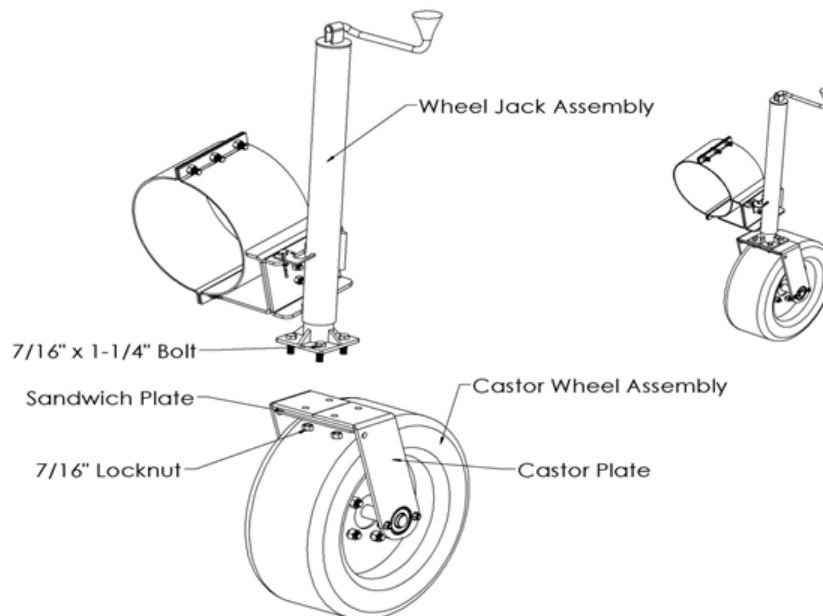
## Assembly Procedure

1. Bolt the wheel jack assembly to the castor wheel assembly using four 7/16" x 1-1/4" bolts and locknuts. Tighten and secure.

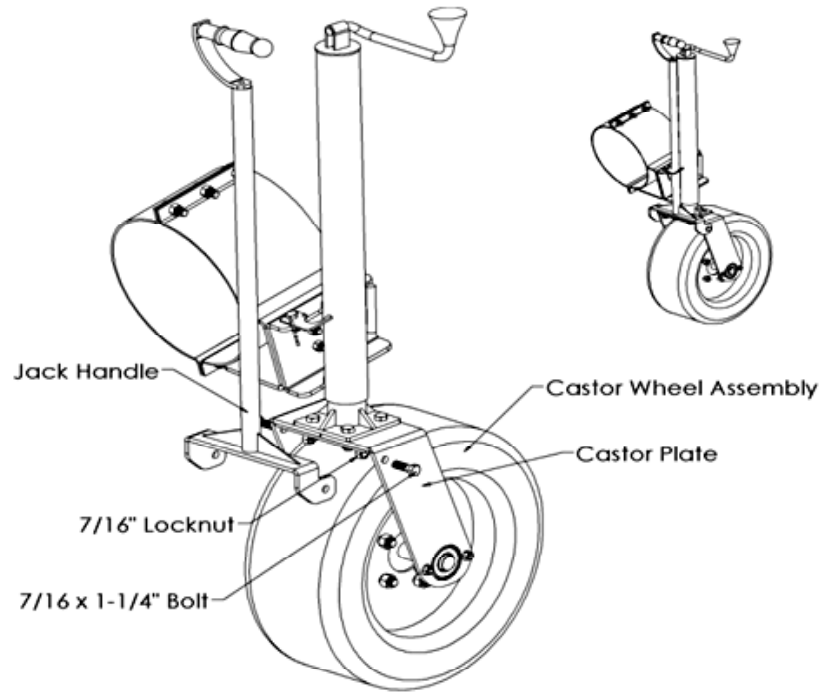
### Note

The sandwich plate connects under the two castor plates.

**Figure 1. Attaching the Wheel Jack Assembly**



2. Attach the transport handle to the castor plates using two 7/16" x 1-1/4" bolts and locknuts. Tighten snug only; these bolts act as pivot points.

**Figure 2. Attaching the Transport Handle**

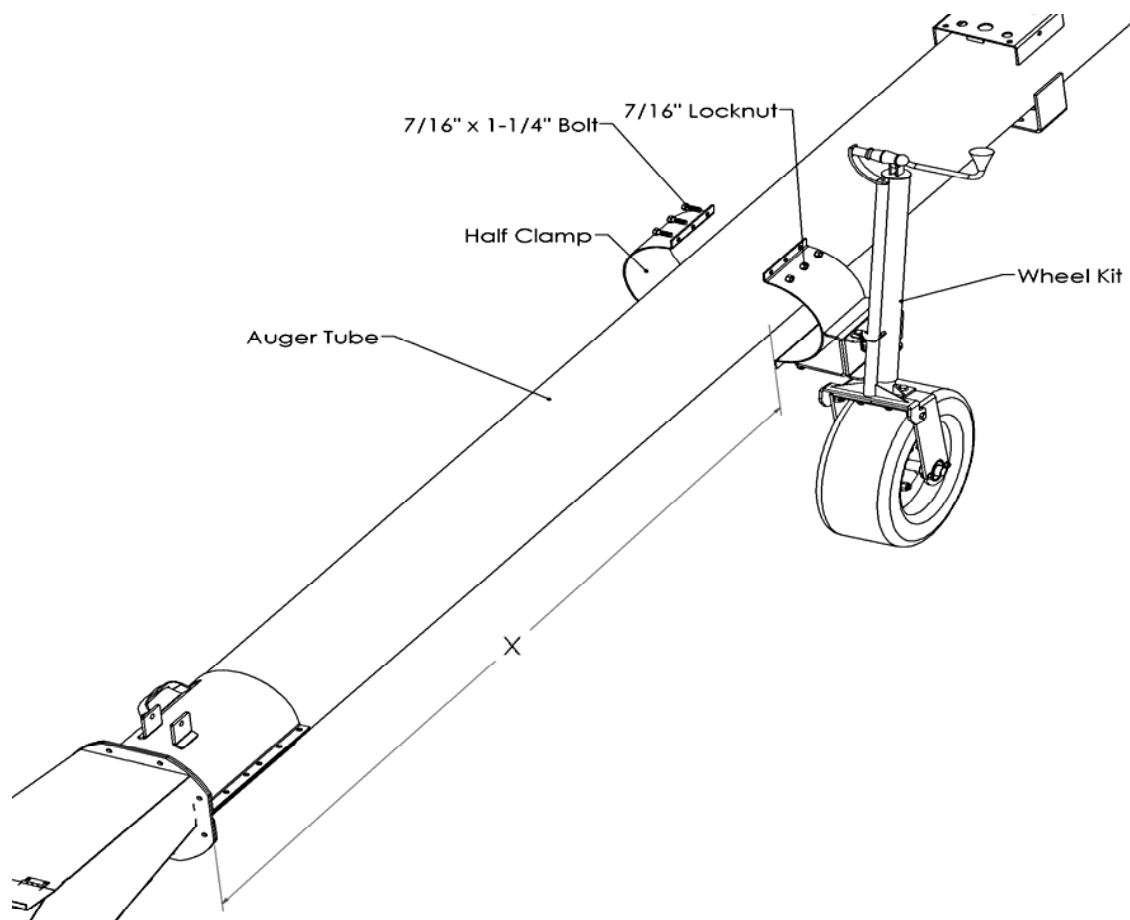
3. Attach the wheel kit to tube using half clamps.
4. Loosely secure the half clamps with six (for 8"/10") or eight (for 13") 7/16" x 1-1/4" bolts and locknuts.
5. Position the wheel kit at a distance "x" as shown in [Table 1](#).

**Table 1. Distance "x"**

Model	x (in)
STX/R 80-36	60
STX/R 80-41	72
STX/R 80-46	72
STX/R 80-51	72
STX/R 100-36	52
STX/R 100-41	65
STX/R 100-51	72
WR 80-26	60
WR/GHR 80-31	69
WR/GHR 80-36	76
WR/GHR 80-41	69
WR/GHR 80-46	76
WR/GHR 80-51	69
WR/GHR 80-56	80
WR/GHR 80-61	88
WR/GHR 80-71	94
WR/GHR 100-31	69
WR/GHR 100-41	63
WR/GHR 100-51	63
WR/GHR 100-61	89
WR/GHR 100-71	88

**Table 1 Distance “x” (continued)**

Model	x (in)
W/GHR 130-31	45.5
W/GHR 130-36	45
W/GHR 130-41	47
W/GHR 130-51	49
W/GHR 130-61	45
W/GHR 130-71	50

**Figure 3. Attaching the Wheel Kit**

- Position the half clamps so that auger jack (wheel kit) is vertical. Tighten the 7/16" locknuts.

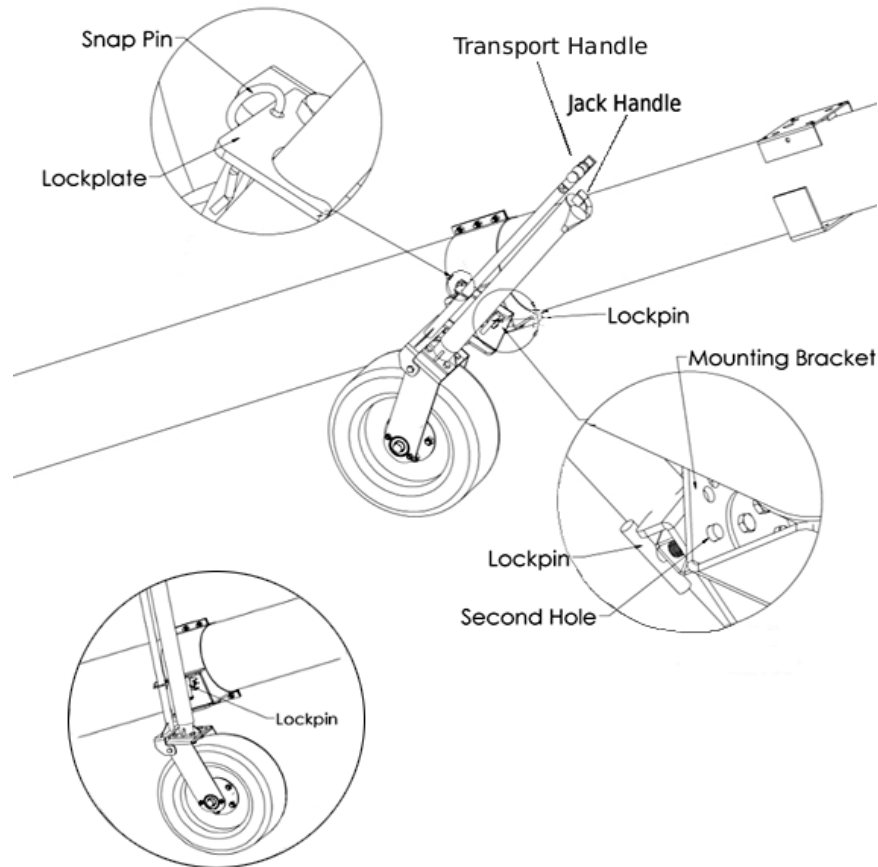
# Transport

1. Place the wheel kit in transport position by disengaging spring-loaded lockpin and turn wheel kit clockwise.
2. Secure the wheel kit in second hole in half clamp mounting bracket.

## NOTICE

Damage to the equipment could result from not placing the wheel kit in transport position prior to transport.

**Figure 4. Preparing for Transport**



3. Place the jack handle in the transport position, use snap pin and lock plate to secure the jack handle.

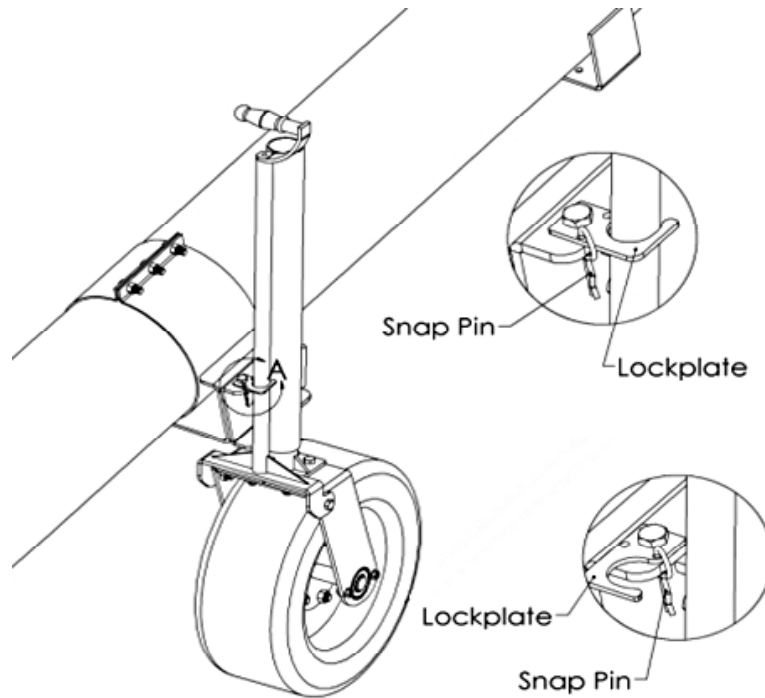
## NOTICE

Wheel kit and jack handle must be in transport position before transporting the auger.

# Operation

1. Place the wheel kit in operation position by disengaging the spring-loaded lock pin and turning the wheel kit counterclockwise.
2. Secure the wheel kit in hole in mounting bracket so that it is roughly perpendicular to the ground.
3. Disengage the transport handle by removing the snap pin and lock plate, and reinserting the snap pin.

**Figure 5. Preparing for Operation**



4. Lower the wheel to the ground by turning the jack handle and lifting auger hopper to desired height.
5. Move auger to desired position using the transport handle.

## Storage

### Off-Season Storage

1. Raise the wheel to full up and secure in transport position.
2. Inspect the unit for damage and note any repairs required. Order replacement parts from your dealer
3. Check tire pressure and inflate to 45 psi (310 kPa).

### To Prepare for Use After Storage

1. Check the tire pressure and inflate according to recommendation if necessary, see [Section – Maintenance on page 6](#).
2. Keep the decals clean. Replace any decal that is damaged or not clearly visible.
3. Conduct the general maintenance procedure before using auger.

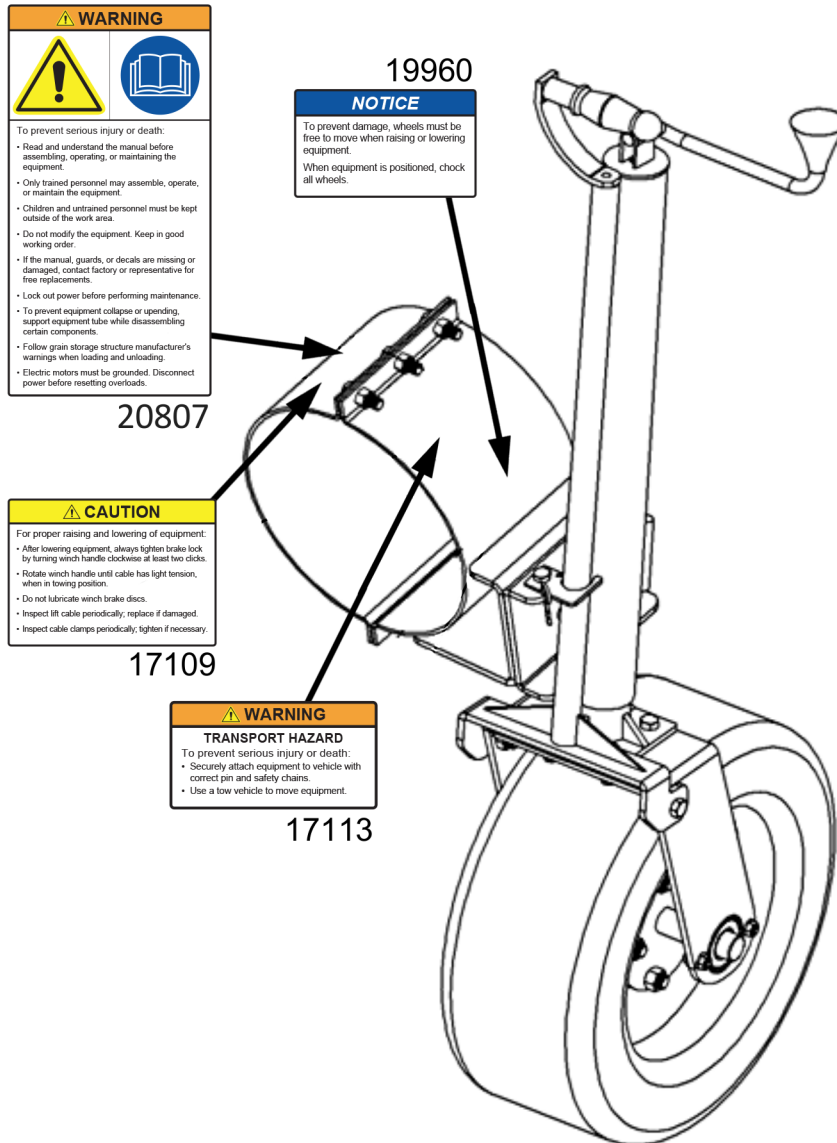
#### **Important**

Use only genuine AGI replacement parts or equivalent. Replacement parts MUST meet ASABE standards or serious injuries may result. Use of unauthorized parts will void warranty. If in doubt, contact AGI or your local AGI dealer. Do not modify any components of the Auger Jack (Wheel Move).

# Maintenance

- Monthly, or as required, check the tire pressure with a tire pressure gauge. The recommended pressure is 40 to 45 psi (276 to 310 kPa).
- Replace safety decals that are missing or have become illegible.

**Figure 6. Safety Decal Locations**



P.O. Box 39  
 Rosenort, Manitoba, R0G 1W0 Canada  
 Phone: (866) 467-7207 (Canada & USA) or (204) 746-2396  
 Fax: (866) 768-4852

Website: [www.aggrowth.com](http://www.aggrowth.com)  
 Email: [sales@grainaugers.com](mailto:sales@grainaugers.com)  
 ©Ag Growth International Inc. 2021, Printed in Canada