



# **A336/A335 Hydraulic Valve Kit Portable Grain Auger Installation Instructions**

Applicable Models:

**Westfield MKX, Westfield X, AGI X, Hutchinson HX, Mayrath HX 10/13 Series**

The Hydraulic Valve Kit allows you to raise and lower the swing-away from outside the tractor.

## **Pre-Installation Instructions**

- Familiarize yourself with all the required hardware. Kit A336 is for MKX10, X10, and HX10 augers. Kit A335 is for MKX13, X13, and HX13 augers.
- Arrange all parts for easy access.

## **Hydraulic Valve Installation**

Refer to [Figure 1](#) and [Figure 2](#) for assembly detail.

1. Replace the existing PTO bracket with the longer PTO bracket.
2. Remove the double hose holder from the existing PTO bracket and attach it to the longer PTO bracket.
3. Mount the hydraulic winch valve to the PTO bracket using the saddle pin and grip clip.
4. Connect the hydraulic hoses between the control valve and the winch.
5. Connect the hydraulic hoses between the control valve and the tractor. Place the hoses through the double hose holder when disconnected from the tractor.

**Figure 1. Installing the Hydraulic Winch Valve and PTO Bracket**

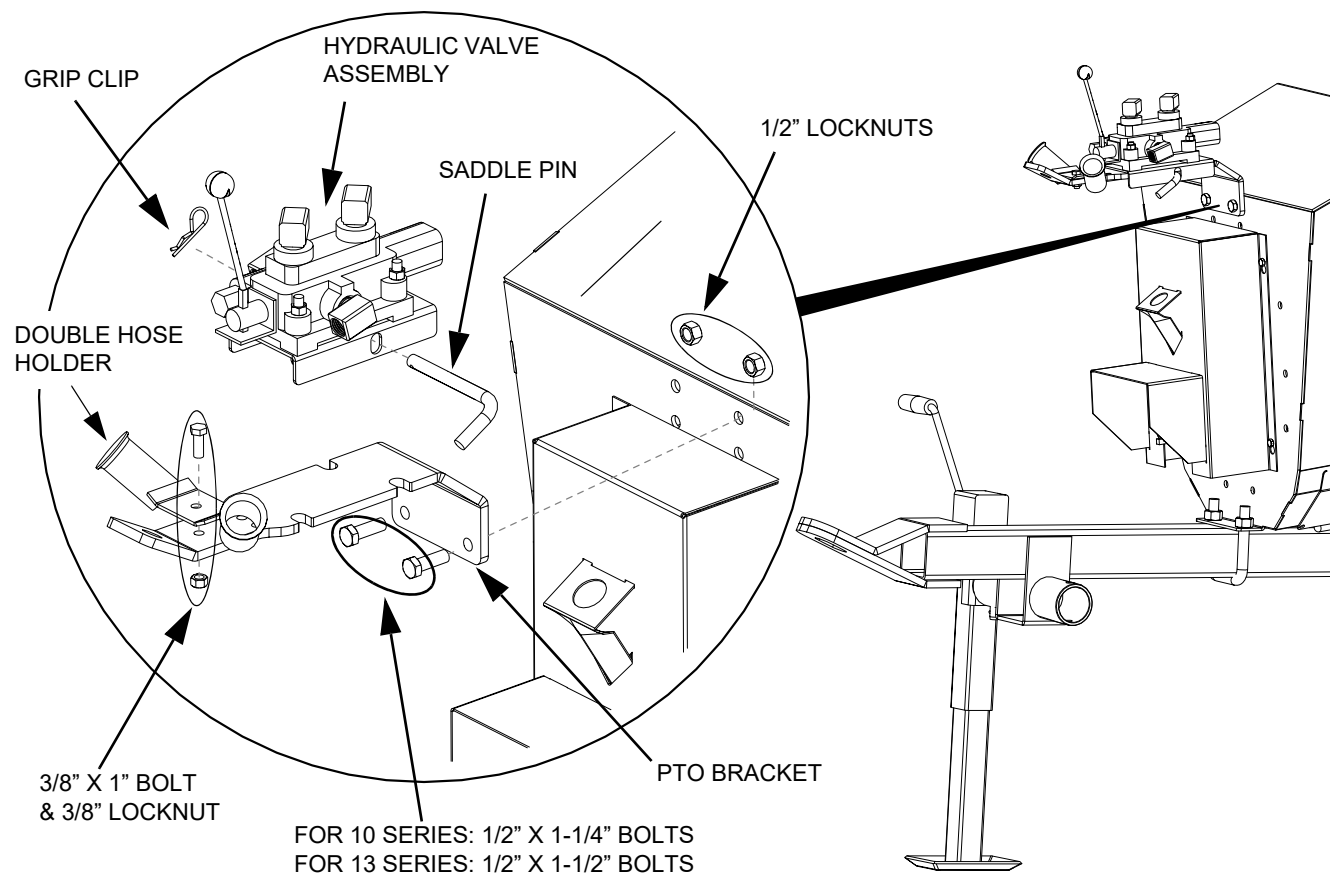
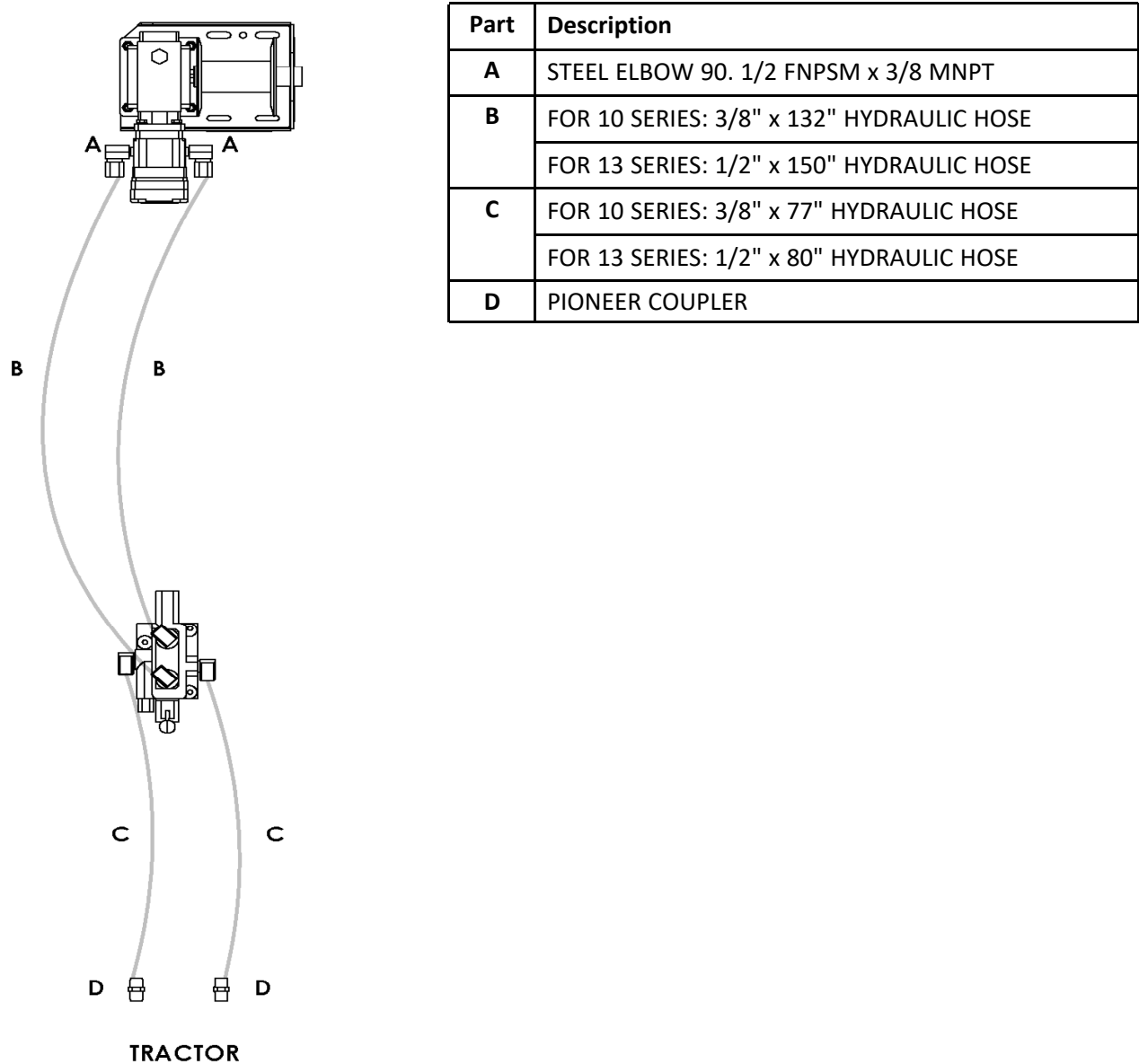


Figure 2. Installing the Hydraulic Hose Between the Control Valve and Winch



AGI is a leading provider of equipment solutions for agriculture bulk commodities including seed, fertilizer, grain, and feed systems with a growing platform in providing equipment and solutions for food processing facilities. AGI has manufacturing facilities in Canada, the United States, the United Kingdom, Brazil, South Africa, India and Italy and distributes its products globally.



P.O. Box 39, Rosenort, Manitoba, R0G 1W0 Canada  
P 866.467.7207 (Canada & USA) or 204.746.2396 | F 866.768.4852 | E sales@grainaugers.com

AGGROWTH.COM aggrowthintl   
©Ag Growth International Inc. 2021 | Printed in Canada