

# STORAGE SILOS







## Vision

In 2020, AGI PTM and AGI FRAME merged, creating AGI EMEA, the business and manufacturing headquarters for AGI in Europe, the Middle East and Africa. With three updated, state-of-the-art manufacturing facilities in Bologna Italy, AGI EMEA delivers custom systems and solutions across seven components; storage, handling, processing, structures, technology, project management and engineering.

With over 30 years of experience in grain storage and handling, AGI EMEA is one of Europe's largest and most respected manufacturers of all types of corrugated steel silos for commercial and agricultural applications. Their complete catalog includes, catwalks, ladders, platforms, bucket elevators, chain conveyors, temperature sensing, sweeps, weighing, bagging and dryers. From the first design, to manufacturing and installation, customers trust AGI EMEA to partner with on their projects around the world.

## Company Profile

Originally established as a general engineering company in Ozzano dell' Emilia, near Bologna (Italy) AGI FRAME entered the corrugated silo market in the mid 1990's. AGI FRAME provided many services to fulfill their clients needs, varying from; the preparation of the initial offer, ensuring the specific requirements from the client are met, submitting detailed drawings, analysis of soil tests to supervising the erection of their silos on site. All of this has allowed AGI FRAME to become one of Europe's largest and most respected designers, manufacturers and suppliers of all types of corrugated steel silos for commercial and agricultural applications as well as the ancillary products such as catwalks, ladders, platforms, towers, aeration and temperature sensing systems. AGI FRAME can also supply mechanical handling, cleaning, weighing, and bagging equipment. Over the past 30 years, AGI FRAME has supplied silos throughout the world and is now a preferred supplier to many of Europe's leading grain processors and terminals.

### 01

#### Intro

- 01 Vision and Company Profile
- 02 Highly skilled and Qualified Workforce Quality and Certifications
- 03 The Lab
- 04 Outstanding features of AGI FRAME Silos

### 02

#### FP Flat Bottom Silos

- 05 FP Flat Bottom Silos
- 06 Roof Structures, Easy Access Sidewall Door
- 08 Catwalks and Catwalk Supports

### 03

#### FC Hopper Bottom Silos

- 09 FP Hopper Bottom Silos

### 04

#### Silo Accessories

- 11 Sweep Augers
- 12 Roof Vents, Aeration System, Fixed and Mobile Electric Fans
- 13 Grain Ladders, Gravity Sidewall Discharge, Temperature Sensing
- 14 Sidewall Ladders and Platforms, Snow Barriers, Wind Rings

### 06

#### Steel Structures

- 15 Steel Structures

### 07

#### Tables | Dimensions and Capacities

- 16 FP Flat Bottom Silos
- 25 FC-45 Hopper Silos
- 31 FC-60 Hopper Silos



# Highly Skilled and Qualified Workforce

Our Technical Department makes extensive utilization of both Auto Cad and 3D modeling in both project and component design. AGI FRAME has a policy to continuously improve our current designs and manufacturing processes to offer both cost savings to our clients as well as safeguarding environmental conditions wherever possible.

AGI FRAME has been awarded the ISO 9001 Quality Assurance Certification for the design, production and installation of grain storage silos, ensuring that the highest standards are maintained through all stages of the project.

EN ISO 3834 relates to the quality in welding, the standard defines quality requirements for welding both in workshops and on site and demonstrate the manufacturer's capability to produce welded assemblies in accordance with the specified criteria.

Under the latest EU requirements, any manufactured structural metal components either manufactured or imported into the EU must comply with the CE marking requirements, it is a criminal offence to supply structural steel work within the EU unless it conforms to this standard and carries the legitimate CE mark. AGI FRAME have been awarded the necessary certification to apply the CE mark.



ISO 9001  
CERT N 6979/2



UNI EN 1090-1  
N.0425-CPR-2727

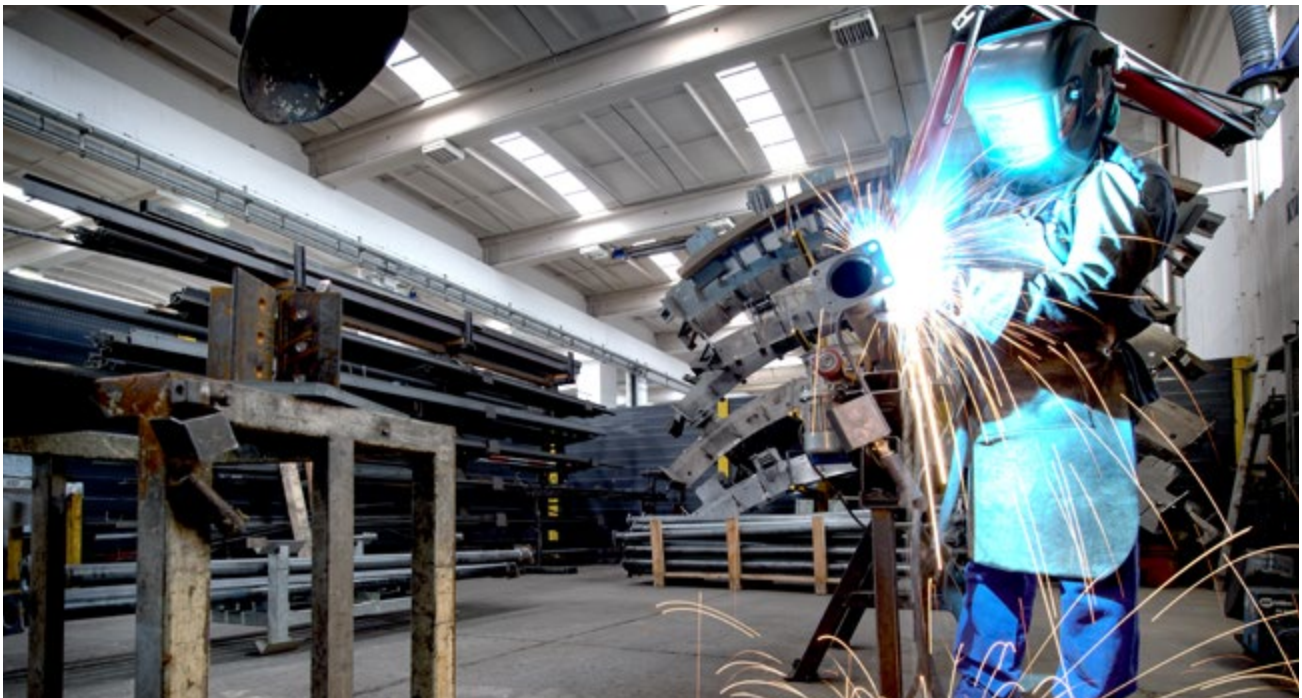


ISO 3834-2  
CERT. N. 6979/2



# The Lab

AGI FRAME has their own laboratory for analysis of both raw material and manufactured components, in addition to quality control and traceability procedures are adhered to throughout the manufacturing processes.





# Outstanding Features of AGI FRAME Silos

The cylinder is constructed from galvanized corrugated steel sheets with profiled external galvanized vertical stiffeners. All components are manufactured using highly automated techniques, ensuring fast and accurate production.

The sidewall sheets are manufactured from 0.8mm through to 4.5mm galvanized steel and the stiffeners of the bin from 0.8mm through to 6.0mm galvanized, (standard 600 g/m<sup>2</sup> steel with a tensile strength up to 470 N/mm<sup>2</sup> and a yield stress up to 420 N/mm<sup>2</sup>).

Where necessary laminated sheets are used for greater strength.

The profiled stiffeners carry the vertical load of the silo to the base.

The stiffeners feature strong bolted splice joint plates with a large cross sectional area, critical elements in stiffener design.

Sidewall sheets are assembled with AGI FRAME high strength grade 8.8 bolts, guaranteed against corrosion with a spun galvanized coating.

Rubber coated washers with 'strip' sealant for both horizontal and vertical joints ensure a perfect seal between sidewall sheets and fixings.

Suitable for all free flowing cereals including wheat, maize, barley, rape seed, soya beans, rice, etc.

AGI FRAME offer both the FP and FC range of silos according to ASAE/ANSI, DIN or EUROCODE design standards, taking into account the local wind, seismic and snow load requirement to ensure a perfect fit with the specific environment condition and to achieve the longest silo and accessories lifetime.

Foundation drawings, as well as base load and plant design facilities can be provided. A very wide range of accessories for the FP and FC range of silos are offered.



# FP Flat Bottom Silos

AGI FRAME can meet all customer's needs, either for commercial or agricultural applications, thanks to the wide range of FP Flat Bottom Silos with models from 3.64 up to 32.74 meters diameter. Volumetric storage capacities can exceed 26,192 m<sup>3</sup>, full details are available on request. The standard 30 degree roof pitch ensures maximum storage capacity even with a high angles of repose. The quality of the stored product can be maintained by incorporating a well-designed aeration system with efficient fans and an accurate temperature monitoring system. Suitable for all free flowing cereals including wheat, maize, barley, rape seed, soya beans, rice as well as sunflower, canola and even wood pellets. A complete range of accessories can be offered, such as:



- Aeration and temperature sensing systems
- Roof vents
- Curved roof vents with remotely operated louvres
- Powered roof vents
- Catwalks in a wide range of widths and specifications to suit the conveyor loading the silos
- Vertical ladders incorporating safety cages, spiral stairways, roof ladders and stairs with double handrails
- Wind rings
- Gravity sidewall discharge and necessary accessories
- Service platforms
- Grain ladders to reduce the risk of damage to the material loaded into the silo
- Snow barriers
- Sidewall 'drive through' unloading facility
- Support towers
- Ventilated roof upgrade
- Manhole





# Roof Structures

AGI FRAME Silos incorporate a strong roof design. The standard 30 degree roof pitch ensures maximum storage capacity even with high angles of repose.

- The roof segments, manufactured from high quality tensile steel are ribbed and form an exceptionally strong modular roof system; each segment is formed and punched on a fully automated production line.
- Each roof assembly incorporates an inspection/access manhole as standard.
- An internal galvanized steel structure to accept peak loads up to 15,000 kg. and multiple temperature cable suspension points is offered as a standard on silos above model FP 18, available on request on silos model FP 16 to FP 17.
- The simple design allows for fast assembly, incorporates galvanized "Z" section beams which are connected laterally and braced in single a-frames to provide stability both during the erection and the use of the silo.



The centre cap and inner ring assembly, available on model FP 11 to FP 36, provides a large load bearing area to support catwalks and ancillary equipment without the requirement of on-site fabrication AGI FRAME FP Silos can be supplied with a number of different roof vent designs to suit the clients requirements, low profile, curved and powered vents are all offered to fit over pre-punched apertures in the roof segment which incorporate a pre-formed lip with a special gasket to provide a weather tight seal.



## Easy access sidewall door

All AGI FRAME FP Silos incorporate a heavy duty hinged single ring sidewall door in the second ring as standard. The reinforced inner door swings out of the way easily when open. The sturdy welded AGI FRAME is hot dipped galvanized after manufacture. Additional sidewall doors, with necessary vertical access ladders and platforms can be supplied.



## Double ring access door

Double ring sidewall doors can be offered to suit certain models of FP silos at additional cost.



## Drive-in sidewall access door

The Drive-in sidewall access door is designed to fit any vehicle compatible with the customer's specifications and dimensions. Suitable for FP bottom silos from model 16 and above.





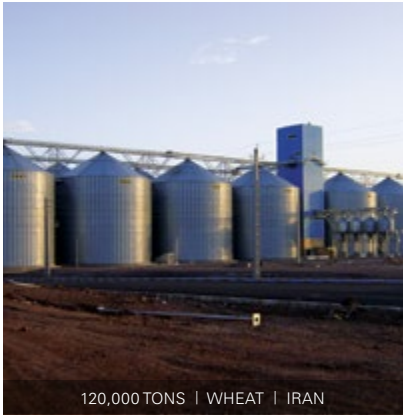
12,000 TONS | WHEAT | RWANDA



32,000 TONS | WHITE MAIZE | VENEZUELA



30,000 TONS | WHEAT | UK



120,000 TONS | WHEAT | IRAN



62,000 TONS | WHEAT | IRAN



30,000 TONS | WHEAT | TANZANIA



21,000 TONS | MAIZE | ITALY



15,000 TONS | MAIZE | HUNGARY



19,000 TONS | WHEAT | GERMANY



24,000 TONS | WHEAT | TANZANIA



20,000 TONS | WHEAT | ITALY



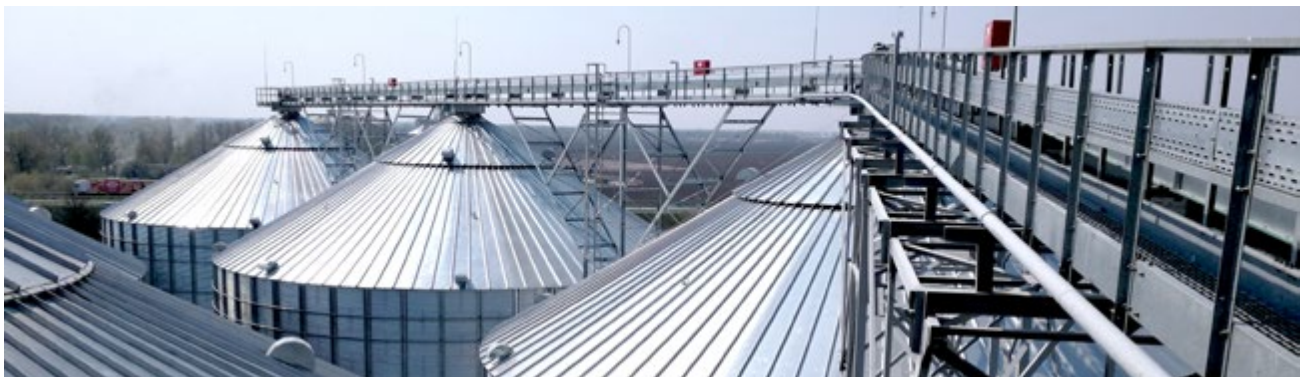
180,000 TONS | MAIZE | SAUDI ARABIA

# Catwalks and Catwalk Supports

From small farm installations to large commercial grain operations, AGI FRAME can offer a wide range of catwalks and catwalk support frames.

Designed and manufactured to ensure the widest range of applications utilising standard components wherever possible, AGI FRAME engineers and optimise every catwalk system design according to the specific application, providing the most cost-effective, easily assembled and correctly engineered solutions. For example, considering the varying weights, dimensions and positions of the drive stations fitted to the chain conveyors loading the silos as well as other local factors.

In addition, designs to accommodate bigger conveyors up to 1500 t/h capacity, both chain and belt conveyors can also be offered. Wherever possible, there is a minimal use of independent support towers, therefore reducing installation and civil costs. A full range of accessories such as side extensions to allow access for machine maintenance, connections to cross catwalks, supports for conveyors at varying levels and connections to existing buildings or towers are available.





# FC Hopper Bin Silos

AGI FRAME FC Hopper Bottom Storage Silos offer versatility, fast assembly and a low cost per tonne. The use of hoppers is proven to be the best solution for frequent product unloading cycles without leaving residual material in the silo, thus minimizing the use of mechanical unloading equipment.

AGI FRAME offers two hopper models: 45 and 60 degree, to provide the best solution even for wet products and high friction angles.

A wide range of model are available from 3.6 meters to 14.55 meters diameter.

The 45 degree hopper silos are available with capacities up to 5,342 m<sup>3</sup>, the 60 degree hopper silos are offered with capacities up to 1,218 m<sup>3</sup>. Full details on request.

The profiled stiffeners carry the vertical load of the silo to the compression ring. The stiffeners feature strong bolted splice joint plates with large cross sectional area, critical elements in stiffener design.

Hopper sheets, compression rings and support steel are hot dipped galvanized. Hopper sheets incorporate mushroom headed bolts on the internal surfaces to ensure maximum cleanliness inside the silo. Smooth wall hopper silos for nonfree flowing materials can be supplied as required.

A support structure for truck loading can be offered.

A complete range of accessories can be offered, such as:

- Aeration and temperature sensing systems
- Roof vents
- Curved roof vents with remotely operated louvres
- Powered roof vents
- Catwalks in a wide range of widths and specifications to suit the conveyor loading the silos
- Vertical ladders incorporating safety cages, roof ladders and stairs with double handrails
- Snow barriers
- Sidewall doors
- Service platforms
- Ventilated roof upgrade





30,000 TONS | WHEAT | EGYPT



11,000 TONS | PADDY RICE | IRAN



62,000 TONS | WHITE MAIZE | IRAN



2,800 TONS | WHEAT | SERBIA



32,000 TONS | WHITE MAIZE | VENEZUELA



19,000 TONS | MAIZE | LITUANIA



21,000 TONS | WHEAT | BURUNDI



3,000 TONS | WHEAT AND MAIZE | ITALY



5,500 TONS | WHEAT | INDONESIA



11,000 TONS | WHEAT | UK



5,000 TONS | WHEAT | ITALY



700 TONS | WHEAT | ITALY



## ACCESSORIES

# Sweep Augers

### Sweep Auger "CST" Type

Compact model with walking plates.  
Direct transmission by gearbox inside the silo. 3 ph 380/420V 50 hz IP 55 electric geared motor above ground level (ATEX standard motors available at additional cost if required) Discharge capacity: capacity 30, 40, 50 T/h based on cereal @780 kgs/m<sup>3</sup> to suit silo models from FP06 up to FP18.

---



### Sweep Auger "CSTF" Type

Compact model with walking plates.  
Direct transmission by gearbox inside the silo. 3 ph 380/420V 50 hz IP 55 electric geared motor above ground level (ATEX standard motors available at additional cost if required) Discharge capacity: 30, 40, 50 T/h based on cereal @ 780 kgs/m<sup>3</sup> to suit silo models from FP18 up to FP26.

---



### Sweep Auger "FSA" Type – Rubber Tyre

Direct transmission by gearbox inside the silo. 3 ph 380/420 v 50 hz IP 55 electric gear motor above ground level (ATEX standard motors available at additional cost if required) Discharge capacity: 50, 80, 100 T/h based on cereal @780 kgs/m<sup>3</sup> to suit silo models from FP20 up to FP36. For very abrasive products (i.e. paddy rice) the FSA model is available upon customer request.



FOR HIGHER CAPACITY SWEEP AUGERS AND MACHINES LARGER DIAMETER SILOS, AGI FRAME CAN OFFER A WIDE RANGE OF MACHINES TO ATEX STANDARD AND SUITABLE FOR A WIDE RANGE OF CEREALS

## ACCESSORIES

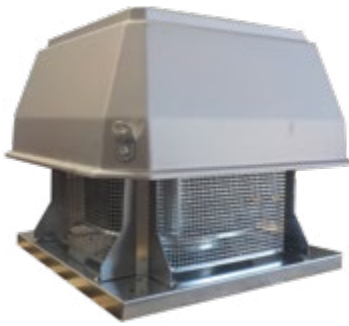
# Roof Vents

AGI FRAME FP Silos can be supplied with a number of different roof vent designs to suit the clients requirements. Low profile, curved and powered vents are all offered to fit over pre-punched apertures in the roof segment which incorporate a pre-formed lip with a special gasket to provide a weather tight seal.



### TORXEF504X2

Powered fan 0,75 kW, Volume: 8,000 m<sup>3</sup>/h @ 5mm swg – ATEX 22



### TORX0075G

Powered fan 1.5 kW – Volume 7,600 m<sup>3</sup>/h @ 10 mm swg – ATEX 22

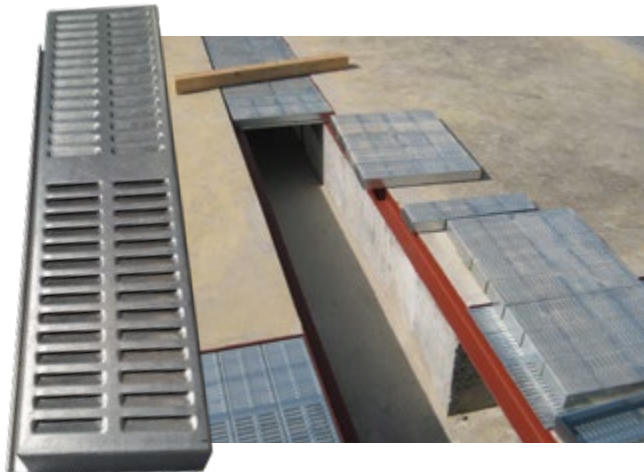


### AERAP-XM

Curved roof vent, with powered fan 0.18 kW, Volume: 2,000 m<sup>3</sup>/h @ 5mm swg – ATEX 22. Curved roof. As an option, remotely operated louvres are available for roof vents when fumigating the silo

# Aeration Systems

AGI FRAME can offer a level floor aeration system to suit the complete range of model FP Silos. The galvanized modular grids can be offered to suit various cereals. The grids are self-supporting with no additional support steel required, and are easily removable for cleaning. Optional pre-formed steel troughs to cast into the silo base are available at additional cost. 'Full-floor' aeration as well as ventilated cones are also offered to suit a wide range of silos.



# Fixed and Mobile Electric Fans

**Fixed version:** electric centrifugal fan, medium pressure type, for ambient air aeration. Complete with steel balanced fan, 3 ph 380/420 v 50 hz IP 55 electric motor, PVC flexible sleeve, diam. 400 mm, L = 2 m, clamping band, outlet transition.

**Mobile version:** electric centrifugal fan, medium pressure type, for ambient air aeration; mounted on tyres and equipped with handgrips for easy handling. Complete with: steel balanced impeller, 3ph 380/420v 50hz IP 55 electric motor IE2, electric cable L = 10 m with plug and control panel, PVC flexible sleeve, dia. 400 mm, L = 2 m, clamping band, Outlet transition.

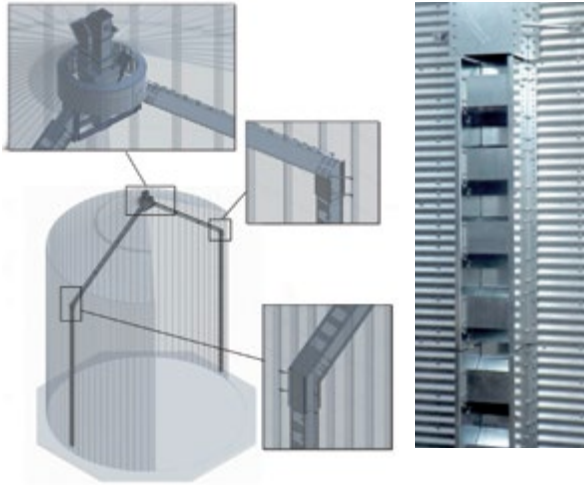




ACCESSORIES

## Grain Ladders

To reduce the risk of breakage to soya beans and other similar cereals when loading the silo, AGI FRAME can offer sidewall mounted grain ladders as shown.



## Gravity Sidewall Discharge

Chain operated gravity side wall discharge outlets with access platforms and ladders can be supplied to suit most models of FP Silo at additional cost.



## Temperature Sensing

### Temperature Monitoring System AGROLOG TMS 2500

A compact portable hand terminal with built-in memory for documented temperature monitoring which also includes a PC software to provide a quick overview.

#### BENEFITS

- Reliable and user friendly
- Easy to install
- Durable construction for all climates
- Two wire cable for easy connection
- Digital sensor no calibration needed
- Flexible design for future extension
- Sensor lines tailored to any application for ATEX zone 20/21/22
- Backlight display to help read in low light conditions
- PC program to store and recall data with time and date
- Temperature trend curves and tables



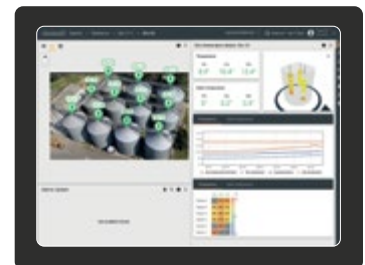
## Temperature Sensing

### Temperature Monitoring System AGROLOG TMS 6000

Take full advantage of the benefits of the new technology and let our Agrolog grain and crop quality management system give you the tools you need to always be in control of your grain and crops.

#### BENEFITS

- Intuitive, modern graphical interface allows for quick and easy interpretation of data
- Real-time data – telemetry, monitoring and control 24/7
- Real-time 3D visualizations quickly illustrate where the problems occur in the silo
- REST Interface for integration with third party systems and an open system that gives developers access to advanced computations
- Be notified by e-mail to the slightest change in your crops, even when not currently using the software
- Full historical chart for deeper insights into trends



## ACCESSORIES

# Sidewall Ladders and Platforms

AGI FRAME offers all sidewall ladders and platforms with safety cages and handrails to European standards. Manufactured from galvanized steel, ladders and platforms are specially designed with a non-slip deck/walking area. Platforms can be supplied to provide access to the roof access/inspection manhole with vertical ladders to the catwalk as required.



# Snow Barriers

Manufactured from galvanized, profiled and perforated steel sections, snow barriers can be offered to be fitted to the roof eaves.



# Wind Rings

Curved, galvanized tubular wind rings, with flanged joints are connected to the sidewall stiffeners to provide continuous circular reinforcement around the silo, can be supplied for high wind speed or other special load conditions.





# Steel Structures

AGI FRAME can also provide fully integrated solutions for steel structures to suit heavy duty catwalks, supporting towers and steel buildings in general.



**FP FLAT BOTTOM SILOS DIMENSIONS AND CAPACITIES**

DIAMETER METERS (FT)	MODEL	HEIGHTS		CAPACITY		DIAMETER METERS (FT)	MODEL	HEIGHTS		CAPACITY		
		EAVES M (B)	OVERALL M (C)	M <sup>3</sup>	TONNES			EAVES M (B)	OVERALL M (C)	M <sup>3</sup>	TONNES	
<b>FP 04</b> D=3,64 m (12 FT)	FP 04/04	3,56	4,55	40	31	<b>FP 07</b> D=6,37 m (21 FT)	FP 07/04	3,56	5,33	131	102	
	FP 04/05	4,44	5,43	50	39		FP 07/05	4,44	6,21	159	124	
	FP 04/06	5,32	6,31	59	46		FP 07/06	5,32	7,10	187	146	
	FP 04/07	6,20	7,19	68	53		FP 07/07	6,20	7,98	215	168	
	FP 04/08	7,08	8,07	77	60		FP 07/08	7,08	8,86	243	190	
	FP 04/09	7,96	8,95	86	67		FP 07/09	7,96	9,74	271	212	
	FP 04/10	8,84	9,83	95	74		FP 07/10	8,84	10,62	299	234	
	FP 04/11	9,72	10,71	104	81		FP 07/11	9,72	11,50	327	255	
	FP 04/12	10,60	11,59	114	89		FP 07/12	10,60	12,38	355	277	
	FP 04/13	11,48	12,47	123	96		FP 07/13	11,48	13,26	383	299	
	FP 04/14	12,36	13,35	132	103		FP 07/14	12,36	14,14	411	321	
	FP 04/15	13,24	14,23	141	110		FP 07/15	13,24	15,02	440	343	
	FP 04/16	14,12	15,11	150	117		FP 07/16	14,12	15,90	468	365	
	FP 04/17	15,00	15,99	159	124		FP 07/17	15,00	16,78	496	387	
	FP 04/18	15,88	16,87	168	131		FP 07/18	15,88	17,66	524	408	
	FP 04/19	16,76	17,75	178	139		FP 07/19	16,76	18,54	552	430	
	FP 04/20	17,64	18,63	187	146		FP 07/20	17,64	19,42	580	452	
	<b>FP 05</b> D=4,55 m (15 FT)	FP 05/04	3,56	4,81	64		50	FP 07/21	18,52	20,30	608	474
		FP 05/05	4,44	5,69	79		61	FP 07/22	19,40	21,18	636	496
		FP 05/06	5,32	6,57	93		73	FP 07/23	20,28	22,06	664	518
FP 05/07		6,20	7,45	107	84	FP 07/24	21,16	22,94	692	540		
FP 05/08		7,08	8,33	122	95	FP 07/25	22,04	23,82	720	561		
FP 05/09		7,96	9,21	136	106	FP 07/26	22,92	24,70	748	583		
FP 05/10		8,84	10,09	150	117	FP 07/27	23,80	25,58	776	605		
FP 05/11		9,72	10,97	164	128	FP 07/28	24,68	26,46	804	627		
FP 05/12		10,60	11,85	179	139	FP 07/29	25,56	27,34	832	649		
FP 05/13		11,48	12,73	193	151	FP 07/30	26,44	28,22	860	671		
FP 05/14		12,36	13,61	207	162	FP 07/31	27,32	29,10	888	693		
FP 05/15		13,24	14,49	222	173	FP 07/32	28,20	29,98	916	714		
FP 05/16		14,12	15,37	236	184	FP 08/04	3,56	5,60	175	136		
FP 05/17		15,00	16,25	250	195	FP 08/05	4,44	6,48	211	165		
FP 05/18		15,88	17,13	265	206	FP 08/06	5,32	7,36	248	193		
FP 05/19		16,76	18,01	279	217	FP 08/07	6,20	8,24	285	222		
FP 05/20		17,64	18,89	293	229	FP 08/08	7,08	9,12	321	251		
FP 05/21		18,52	19,77	307	240	FP 08/09	7,96	10,00	358	279		
FP 05/22		19,40	20,65	322	251	FP 08/10	8,84	10,88	394	308		
FP 05/23		20,28	21,53	336	262	FP 08/11	9,72	11,76	431	336		
FP 05/24	21,16	22,41	350	273	FP 08/12	10,60	12,64	468	365			
FP 05/25	22,04	23,29	365	284	FP 08/13	11,48	13,52	504	393			
<b>FP 06</b> D=5,46 m (18 FT)	FP 06/04	3,56	5,07	95	74	<b>FP 08</b> D=7,28 m (24 FT)	FP 08/14	12,36	14,40	541	422	
	FP 06/05	4,44	5,95	115	90		FP 08/15	13,24	15,28	577	450	
	FP 06/06	5,32	6,83	136	106		FP 08/16	14,12	16,16	614	479	
	FP 06/07	6,20	7,71	156	122		FP 08/17	15,00	17,04	651	507	
	FP 06/08	7,08	8,59	177	138		FP 08/18	15,88	17,92	687	536	
	FP 06/09	7,96	9,47	197	154		FP 08/19	16,76	18,80	724	565	
	FP 06/10	8,84	10,35	218	170		FP 08/20	17,64	19,68	760	593	
	FP 06/11	9,72	11,23	239	186		FP 08/21	18,52	20,56	797	622	
	FP 06/12	10,60	12,11	259	202		FP 08/22	19,40	21,44	834	650	
	FP 06/13	11,48	12,99	280	218		FP 08/23	20,28	22,32	870	679	
	FP 06/14	12,36	13,87	300	234		FP 08/24	21,16	23,20	907	707	
	FP 06/15	13,24	14,75	321	250		FP 08/25	22,04	24,08	943	736	
	FP 06/16	14,12	15,63	342	266		FP 08/26	22,92	24,96	980	764	
	FP 06/17	15,00	16,51	362	283		FP 08/27	23,80	25,84	1.017	793	
	FP 06/18	15,88	17,39	383	299		FP 08/28	24,68	26,72	1.053	821	
	FP 06/19	16,76	18,27	403	315		FP 08/29	25,56	27,60	1.090	850	
	FP 06/20	17,64	19,15	424	331		FP 08/30	26,44	28,48	1.126	879	
	FP 06/21	18,52	20,03	445	347		FP 08/31	27,32	29,36	1.163	907	
	FP 06/22	19,40	20,91	465	363		FP 08/32	28,20	30,24	1.200	936	
	FP 06/23	20,28	21,79	486	379							
	FP 06/24	21,16	22,67	506	395							
	FP 06/25	22,04	23,55	527	411							
	FP 06/26	22,92	24,43	547	427							
	FP 06/27	23,80	25,31	568	443							
	FP 06/28	24,68	26,19	589	459							
	FP 06/29	25,56	27,07	609	475							
	FP 06/30	26,44	27,95	630	491							



**FP FLAT BOTTOM SILOS DIMENSIONS AND CAPACITIES**

DIAMETER METERS (FT)	MODEL	HEIGHTS		CAPACITY		DIAMETER METERS (FT)	MODEL	HEIGHTS		CAPACITY			
		EAVES M (B)	OVERALL M (C)	M <sup>3</sup>	TONNES			EAVES M (B)	OVERALL M (C)	M <sup>3</sup>	TONNES		
<b>FP 09</b> D=8,19 m (27 FT)	FP 09/04	3,56	5,86	225	176	<b>FP 11</b> D=10,01 m (33 FT)	FP 11/04	3,56	6,24	350	273		
	FP 09/05	4,44	6,74	272	212		FP 11/05	4,44	7,12	419	327		
	FP 09/06	5,32	7,62	318	248		FP 11/06	5,32	8,00	488	381		
	FP 09/07	6,20	8,50	364	284		FP 11/07	6,20	8,88	557	435		
	FP 09/08	7,08	9,38	411	320		FP 11/08	7,08	9,76	626	489		
	FP 09/09	7,96	10,26	457	357		FP 11/09	7,96	10,65	696	542		
	FP 09/10	8,84	11,14	503	393		FP 11/10	8,84	11,53	765	596		
	FP 09/11	9,72	12,02	550	429		FP 11/11	9,72	12,41	834	650		
	FP 09/12	10,60	12,90	596	465		FP 11/12	10,60	13,29	903	704		
	FP 09/13	11,48	13,78	642	501		FP 11/13	11,48	14,17	972	758		
	FP 09/14	12,36	14,66	689	537		FP 11/14	12,36	15,05	1.041	812		
	FP 09/15	13,24	15,54	735	573		FP 11/15	13,24	15,93	1.111	866		
	FP 09/16	14,12	16,42	781	609		FP 11/16	14,12	16,81	1.180	920		
	FP 09/17	15,00	17,30	828	646		FP 11/17	15,00	17,69	1.249	974		
	FP 09/18	15,88	18,18	874	682		FP 11/18	15,88	18,57	1.318	1.028		
	FP 09/19	16,76	19,06	920	718		FP 11/19	16,76	19,45	1.387	1.082		
	FP 09/20	17,64	19,94	967	754		FP 11/20	17,64	20,33	1.457	1.136		
	FP 09/21	18,52	20,82	1.013	790		FP 11/21	18,52	21,21	1.526	1.190		
	FP 09/22	19,40	21,70	1.059	826		FP 11/22	19,40	22,09	1.595	1.244		
	FP 09/23	20,28	22,58	1.106	862		FP 11/23	20,28	22,97	1.664	1.298		
	FP 09/24	21,16	23,46	1.152	898		FP 11/24	21,16	23,85	1.733	1.352		
	FP 09/25	22,04	24,34	1.198	935		FP 11/25	22,04	24,73	1.803	1.406		
	FP 09/26	22,92	25,22	1.245	971		FP 11/26	22,92	25,61	1.872	1.460		
	FP 09/27	23,80	26,10	1.291	1.007		FP 11/27	23,80	26,49	1.941	1.514		
	FP 09/28	24,68	26,98	1.337	1.043		FP 11/28	24,68	27,37	2.010	1.568		
	FP 09/29	25,56	27,86	1.384	1.079		FP 11/29	25,56	28,25	2.079	1.622		
	FP 09/30	26,44	28,74	1.430	1.115		FP 11/30	26,44	29,13	2.149	1.676		
	FP 09/31	27,32	29,62	1.476	1.151		FP 11/31	27,32	30,01	2.218	1.730		
	FP 09/32	28,20	30,50	1.522	1.188		FP 11/32	28,20	30,89	2.287	1.784		
	<b>FP 10</b> D=9,10 m (30 FT)	FP 10/04	3,56	5,98	284		221	<b>FP 12</b> D=10,91 m (36 FT)	FP 12/04	3,56	6,51	424	330
		FP 10/05	4,44	6,86	341		266		FP 12/05	4,44	7,39	506	395
		FP 10/06	5,32	7,74	398		310		FP 12/06	5,32	8,27	588	459
FP 10/07		6,20	8,62	455	355	FP 12/07	6,20		9,15	671	523		
FP 10/08		7,08	9,50	512	400	FP 12/08	7,08		10,03	753	587		
FP 10/09		7,96	10,38	570	444	FP 12/09	7,96		10,91	835	651		
FP 10/10		8,84	11,26	627	489	FP 12/10	8,84		11,79	918	716		
FP 10/11		9,72	12,14	684	533	FP 12/11	9,72		12,67	1.000	780		
FP 10/12		10,60	13,02	741	578	FP 12/12	10,60		13,55	1.082	844		
FP 10/13		11,48	13,90	798	623	FP 12/13	11,48		14,43	1.165	908		
FP 10/14		12,36	14,78	855	667	FP 12/14	12,36		15,31	1.247	973		
FP 10/15		13,24	15,66	913	712	FP 12/15	13,24		16,19	1.329	1.037		
FP 10/16		14,12	16,54	970	756	FP 12/16	14,12		17,07	1.412	1.101		
FP 10/17		15,00	17,42	1.027	801	FP 12/17	15,00		17,95	1.494	1.165		
FP 10/18		15,88	18,30	1.084	846	FP 12/18	15,88		18,83	1.576	1.230		
FP 10/19		16,76	19,18	1.141	890	FP 12/19	16,76		19,71	1.659	1.294		
FP 10/20		17,64	20,06	1.199	935	FP 12/20	17,64		20,59	1.741	1.358		
FP 10/21		18,52	20,94	1.256	980	FP 12/21	18,52		21,47	1.823	1.422		
FP 10/22		19,40	21,82	1.313	1.024	FP 12/22	19,40		22,35	1.906	1.487		
FP 10/23		20,28	22,70	1.370	1.069	FP 12/23	20,28		23,23	1.988	1.551		
FP 10/24		21,16	23,58	1.427	1.113	FP 12/24	21,16		24,11	2.070	1.615		
FP 10/25		22,04	24,46	1.485	1.158	FP 12/25	22,04		24,99	2.153	1.679		
FP 10/26		22,92	25,34	1.542	1.203	FP 12/26	22,92		25,87	2.235	1.743		
FP 10/27		23,80	26,22	1.599	1.247	FP 12/27	23,80		26,75	2.318	1.808		
FP 10/28		24,68	27,10	1.656	1.292	FP 12/28	24,68		27,63	2.400	1.872		
FP 10/29		25,56	27,98	1.713	1.336	FP 12/29	25,56		28,51	2.482	1.936		
FP 10/30		26,44	28,86	1.770	1.381	FP 12/30	26,44		29,39	2.565	2.000		
FP 10/31		27,32	29,74	1.828	1.426	FP 12/31	27,32		30,27	2.647	2.065		
FP 10/32		28,20	30,62	1.885	1.470	FP 12/32	28,20		31,15	2.729	2.129		

**FP FLAT BOTTOM SILOS DIMENSIONS AND CAPACITIES**

DIAMETER METERS (FT)	MODEL	HEIGHTS		CAPACITY		DIAMETER METERS (FT)	MODEL	HEIGHTS		CAPACITY			
		EAVES M (B)	OVERALL M (C)	M <sup>3</sup>	TONNES			EAVES M (B)	OVERALL M (C)	M <sup>3</sup>	TONNES		
<b>FP 13</b> D=11,82 m (39 FT)	FP 13/04	3,56	6,77	506	395	<b>FP 15</b> D=13,64 m (45 FT)	FP 15/04	3,56	7,29	697	544		
	FP 13/05	4,44	7,65	603	470		FP 15/05	4,44	8,17	826	644		
	FP 13/06	5,32	8,53	699	545		FP 15/06	5,32	9,05	954	744		
	FP 13/07	6,20	9,41	796	621		FP 15/07	6,20	9,94	1.083	845		
	FP 13/08	7,08	10,29	892	696		FP 15/08	7,08	10,82	1.212	945		
	FP 13/09	7,96	11,17	989	772		FP 15/09	7,96	11,70	1.340	1.046		
	FP 13/10	8,84	12,05	1.086	847		FP 15/10	8,84	12,58	1.469	1.146		
	FP 13/11	9,72	12,93	1.182	922		FP 15/11	9,72	13,46	1.598	1.246		
	FP 13/12	10,60	13,81	1.279	998		FP 15/12	10,60	14,34	1.726	1.347		
	FP 13/13	11,48	14,69	1.376	1.073		FP 15/13	11,48	15,22	1.855	1.447		
	FP 13/14	12,36	15,57	1.472	1.148		FP 15/14	12,36	16,10	1.984	1.547		
	FP 13/15	13,24	16,45	1.569	1.224		FP 15/15	13,24	16,98	2.112	1.648		
	FP 13/16	14,12	17,33	1.666	1.299		FP 15/16	14,12	17,86	2.241	1.748		
	FP 13/17	15,00	18,21	1.762	1.375		FP 15/17	15,00	18,74	2.370	1.848		
	FP 13/18	15,88	19,09	1.859	1.450		FP 15/18	15,88	19,62	2.498	1.949		
	FP 13/19	16,76	19,97	1.956	1.525		FP 15/19	16,76	20,50	2.627	2.049		
	FP 13/20	17,64	20,85	2.052	1.601		FP 15/20	17,64	21,38	2.756	2.150		
	FP 13/21	18,52	21,73	2.149	1.676		FP 15/21	18,52	22,26	2.884	2.250		
	FP 13/22	19,40	22,61	2.245	1.751		FP 15/22	19,40	23,14	3.013	2.350		
	FP 13/23	20,28	23,49	2.342	1.827		FP 15/23	20,28	24,02	3.142	2.451		
	FP 13/24	21,16	24,37	2.439	1.902		FP 15/24	21,16	24,90	3.270	2.551		
	FP 13/25	22,04	25,25	2.535	1.978		FP 15/25	22,04	25,78	3.399	2.651		
	FP 13/26	22,92	26,13	2.632	2.053		FP 15/26	22,92	26,66	3.528	2.752		
	FP 13/27	23,80	27,01	2.729	2.128		FP 15/27	23,80	27,54	3.656	2.852		
	FP 13/28	24,68	27,89	2.825	2.204		FP 15/28	24,68	28,42	3.785	2.952		
	FP 13/29	25,56	28,77	2.922	2.279		FP 15/29	25,56	29,30	3.914	3.053		
	FP 13/30	26,44	29,65	3.019	2.355		FP 15/30	26,44	30,18	4.042	3.153		
	FP 13/31	27,32	30,53	3.115	2.430		FP 15/31	27,32	31,06	4.171	3.254		
	FP 13/32	28,20	31,41	3.212	2.505		FP 15/32	28,20	31,94	4.300	3.354		
	<b>FP 14</b> D=12,73 m (42 FT)	FP 14/04	3,56	7,03	597		466	<b>FP 16</b> D=14,55 m (48 FT)	FP 16/04	3,56	7,56	807	629
		FP 14/05	4,44	7,91	709		553		FP 16/05	4,44	8,44	953	743
		FP 14/06	5,32	8,79	821		640		FP 16/06	5,32	9,32	1.099	857
FP 14/07		6,20	9,67	933	728	FP 16/07	6,20		10,20	1.246	972		
FP 14/08		7,08	10,55	1.045	815	FP 16/08	7,08		11,08	1.392	1.086		
FP 14/09		7,96	11,43	1.157	903	FP 16/09	7,96		11,96	1.539	1.200		
FP 14/10		8,84	12,31	1.269	990	FP 16/10	8,84		12,84	1.685	1.314		
FP 14/11		9,72	13,19	1.382	1.078	FP 16/11	9,72		13,72	1.831	1.428		
FP 14/12		10,60	14,07	1.494	1.165	FP 16/12	10,60		14,60	1.978	1.543		
FP 14/13		11,48	14,95	1.606	1.252	FP 16/13	11,48		15,48	2.124	1.657		
FP 14/14		12,36	15,83	1.718	1.340	FP 16/14	12,36		16,36	2.271	1.771		
FP 14/15		13,24	16,71	1.830	1.427	FP 16/15	13,24		17,24	2.417	1.885		
FP 14/16		14,12	17,59	1.942	1.515	FP 16/16	14,12		18,12	2.563	1.999		
FP 14/17		15,00	18,47	2.054	1.602	FP 16/17	15,00		19,00	2.710	2.114		
FP 14/18		15,88	19,35	2.166	1.690	FP 16/18	15,88		19,88	2.856	2.228		
FP 14/19		16,76	20,23	2.278	1.777	FP 16/19	16,76		20,76	3.002	2.342		
FP 14/20		17,64	21,11	2.390	1.864	FP 16/20	17,64		21,64	3.149	2.456		
FP 14/21		18,52	21,99	2.502	1.952	FP 16/21	18,52		22,52	3.295	2.570		
FP 14/22		19,40	22,87	2.615	2.039	FP 16/22	19,40		23,40	3.442	2.685		
FP 14/23		20,28	23,75	2.727	2.127	FP 16/23	20,28		24,28	3.588	2.799		
FP 14/24		21,16	24,63	2.839	2.214	FP 16/24	21,16		25,16	3.734	2.913		
FP 14/25		22,04	25,51	2.951	2.302	FP 16/25	22,04		26,04	3.881	3.027		
FP 14/26		22,92	26,39	3.063	2.389	FP 16/26	22,92		26,92	4.027	3.141		
FP 14/27		23,80	27,27	3.175	2.476	FP 16/27	23,80		27,80	4.174	3.255		
FP 14/28		24,68	28,15	3.287	2.564	FP 16/28	24,68		28,68	4.320	3.370		
FP 14/29		25,56	29,03	3.399	2.651	FP 16/29	25,56		29,56	4.466	3.484		
FP 14/30		26,44	29,91	3.511	2.739	FP 16/30	26,44		30,44	4.613	3.598		
FP 14/31		27,32	30,79	3.623	2.826	FP 16/31	27,32		31,32	4.759	3.712		
FP 14/32		28,20	31,68	3.735	2.914	FP 16/32	28,20		32,20	4.906	3.826		



**FP FLAT BOTTOM SILOS DIMENSIONS AND CAPACITIES**

DIAMETER METERS (FT)	MODEL	HEIGHTS		CAPACITY		DIAMETER METERS (FT)	MODEL	HEIGHTS		CAPACITY			
		EAVES M (B)	OVERALL M (C)	M <sup>3</sup>	TONNES			EAVES M (B)	OVERALL M (C)	M <sup>3</sup>	TONNES		
<b>FP 17</b> D=15,46 m (51 FT)	FP 17/04	3,56	7,76	926	722	<b>FP 19</b> D=17,28 m (57 FT)	FP 19/04	3,56	8,35	1.194	931		
	FP 17/05	4,44	8,64	1.091	851		FP 19/05	4,44	9,23	1.400	1.092		
	FP 17/06	5,32	9,52	1.256	980		FP 19/06	5,32	10,11	1.607	1.253		
	FP 17/07	6,20	10,40	1.421	1.109		FP 19/07	6,20	10,99	1.813	1.414		
	FP 17/08	7,08	11,28	1.587	1.238		FP 19/08	7,08	11,87	2.020	1.575		
	FP 17/09	7,96	12,16	1.752	1.367		FP 19/09	7,96	12,75	2.226	1.736		
	FP 17/10	8,84	13,04	1.917	1.495		FP 19/10	8,84	13,63	2.433	1.898		
	FP 17/11	9,72	13,92	2.083	1.624		FP 19/11	9,72	14,51	2.639	2.059		
	FP 17/12	10,60	14,80	2.248	1.753		FP 19/12	10,60	15,39	2.846	2.220		
	FP 17/13	11,48	15,68	2.413	1.882		FP 19/13	11,48	16,27	3.052	2.381		
	FP 17/14	12,36	16,56	2.578	2.011		FP 19/14	12,36	17,15	3.258	2.542		
	FP 17/15	13,24	17,44	2.744	2.140		FP 19/15	13,24	18,03	3.465	2.703		
	FP 17/16	14,12	18,32	2.909	2.269		FP 19/16	14,12	18,91	3.671	2.864		
	FP 17/17	15,00	19,20	3.074	2.398		FP 19/17	15,00	19,79	3.878	3.025		
	FP 17/18	15,88	20,08	3.239	2.527		FP 19/18	15,88	20,67	4.084	3.186		
	FP 17/19	16,76	20,96	3.405	2.656		FP 19/19	16,76	21,55	4.291	3.347		
	FP 17/20	17,64	21,84	3.570	2.785		FP 19/20	17,64	22,43	4.497	3.508		
	FP 17/21	18,52	22,72	3.735	2.913		FP 19/21	18,52	23,31	4.704	3.669		
	FP 17/22	19,40	23,60	3.900	3.042		FP 19/22	19,40	24,19	4.910	3.830		
	FP 17/23	20,28	24,48	4.066	3.171		FP 19/23	20,28	25,07	5.116	3.991		
	FP 17/24	21,16	25,36	4.231	3.300		FP 19/24	21,16	25,95	5.323	4.152		
	FP 17/25	22,04	26,24	4.396	3.429		FP 19/25	22,04	26,83	5.529	4.313		
	FP 17/26	22,92	27,12	4.562	3.558		FP 19/26	22,92	27,71	5.736	4.474		
	FP 17/27	23,80	28,00	4.727	3.687		FP 19/27	23,80	28,59	5.942	4.635		
	FP 17/28	24,68	28,88	4.892	3.816		FP 19/28	24,68	29,47	6.149	4.796		
	FP 17/29	25,56	29,76	5.057	3.945		FP 19/29	25,56	30,35	6.355	4.957		
	FP 17/30	26,44	30,64	5.223	4.074		FP 19/30	26,44	31,23	6.562	5.118		
	FP 17/31	27,32	31,52	5.388	4.203		FP 19/31	27,32	32,11	6.768	5.279		
	FP 17/32	28,20	32,40	5.553	4.331		FP 19/32	28,20	32,99	6.974	5.440		
	<b>FP 18</b> D=16,37 m (54 FT)	FP 18/04	3,56	8,02	1.055		823	<b>FP 20</b> D=18,19 m (60 FT)	FP 20/04	3,56	8,72	1.344	1.048
		FP 18/05	4,44	8,90	1.240		967		FP 20/05	4,44	9,60	1.573	1.227
		FP 18/06	5,32	9,78	1.425		1.112		FP 20/06	5,32	10,48	1.801	1.405
FP 18/07		6,20	10,66	1.611	1.256	FP 20/07	6,20		11,36	2.030	1.584		
FP 18/08		7,08	11,54	1.796	1.401	FP 20/08	7,08		12,24	2.259	1.762		
FP 18/09		7,96	12,42	1.981	1.545	FP 20/09	7,96		13,12	2.488	1.940		
FP 18/10		8,84	13,30	2.166	1.690	FP 20/10	8,84		14,00	2.716	2.119		
FP 18/11		9,72	14,18	2.352	1.834	FP 20/11	9,72		14,88	2.945	2.297		
FP 18/12		10,60	15,06	2.537	1.979	FP 20/12	10,60		15,76	3.174	2.476		
FP 18/13		11,48	15,94	2.722	2.123	FP 20/13	11,48		16,64	3.403	2.654		
FP 18/14		12,36	16,82	2.908	2.268	FP 20/14	12,36		17,52	3.631	2.833		
FP 18/15		13,24	17,70	3.093	2.412	FP 20/15	13,24		18,40	3.860	3.011		
FP 18/16		14,12	18,58	3.278	2.557	FP 20/16	14,12		19,28	4.089	3.189		
FP 18/17		15,00	19,46	3.463	2.701	FP 20/17	15,00		20,16	4.318	3.368		
FP 18/18		15,88	20,35	3.649	2.846	FP 20/18	15,88		21,04	4.546	3.546		
FP 18/19		16,76	21,23	3.834	2.990	FP 20/19	16,76		21,92	4.775	3.725		
FP 18/20		17,64	22,11	4.019	3.135	FP 20/20	17,64		22,80	5.004	3.903		
FP 18/21		18,52	22,99	4.205	3.280	FP 20/21	18,52		23,68	5.233	4.081		
FP 18/22		19,40	23,87	4.390	3.424	FP 20/22	19,40		24,56	5.461	4.260		
FP 18/23		20,28	24,75	4.575	3.569	FP 20/23	20,28		25,44	5.690	4.438		
FP 18/24		21,16	25,63	4.760	3.713	FP 20/24	21,16		26,32	5.919	4.617		
FP 18/25		22,04	26,51	4.946	3.858	FP 20/25	22,04		27,20	6.148	4.795		
FP 18/26		22,92	27,39	5.131	4.002	FP 20/26	22,92		28,08	6.376	4.974		
FP 18/27		23,80	28,27	5.316	4.147	FP 20/27	23,80		28,96	6.605	5.152		
FP 18/28		24,68	29,15	5.502	4.291	FP 20/28	24,68		29,84	6.834	5.330		
FP 18/29		25,56	30,03	5.687	4.436	FP 20/29	25,56		30,72	7.063	5.509		
FP 18/30		26,44	30,91	5.872	4.580	FP 20/30	26,44		31,60	7.291	5.687		
FP 18/31		27,32	31,79	6.057	4.725	FP 20/31	27,32		32,48	7.520	5.866		
FP 18/32		28,20	32,67	6.243	4.869	FP 20/32	28,20		33,36	7.749	6.044		

**FP FLAT BOTTOM SILOS DIMENSIONS AND CAPACITIES**

DIAMETER METERS (FT)	MODEL	HEIGHTS		CAPACITY		DIAMETER METERS (FT)	MODEL	HEIGHTS		CAPACITY			
		EAVES M (B)	OVERALL M (C)	M <sup>3</sup>	TONNES			EAVES M (B)	OVERALL M (C)	M <sup>3</sup>	TONNES		
<b>FP 21</b> D=19,10 m (63 FT)	FP 21/04	3,56	8,98	1.505	1.174	<b>FP 23</b> D=20,92 m (69 FT)	FP 23/04	3,56	9,51	1.861	1.451		
	FP 21/05	4,44	9,86	1.757	1.370		FP 23/05	4,44	10,39	2.163	1.687		
	FP 21/06	5,32	10,74	2.009	1.567		FP 23/06	5,32	11,27	2.466	1.923		
	FP 21/07	6,20	11,62	2.261	1.764		FP 23/07	6,20	12,15	2.768	2.159		
	FP 21/08	7,08	12,50	2.514	1.961		FP 23/08	7,08	13,03	3.071	2.395		
	FP 21/09	7,96	13,38	2.766	2.157		FP 23/09	7,96	13,91	3.373	2.631		
	FP 21/10	8,84	14,26	3.018	2.354		FP 23/10	8,84	14,79	3.676	2.867		
	FP 21/11	9,72	15,14	3.270	2.551		FP 23/11	9,72	15,67	3.978	3.103		
	FP 21/12	10,60	16,02	3.522	2.747		FP 23/12	10,60	16,55	4.281	3.339		
	FP 21/13	11,48	16,90	3.775	2.944		FP 23/13	11,48	17,43	4.583	3.575		
	FP 21/14	12,36	17,78	4.027	3.141		FP 23/14	12,36	18,31	4.886	3.811		
	FP 21/15	13,24	18,66	4.279	3.338		FP 23/15	13,24	19,19	5.188	4.047		
	FP 21/16	14,12	19,54	4.531	3.534		FP 23/16	14,12	20,07	5.491	4.283		
	FP 21/17	15,00	20,42	4.783	3.731		FP 23/17	15,00	20,95	5.793	4.519		
	FP 21/18	15,88	21,30	5.036	3.928		FP 23/18	15,88	21,83	6.096	4.755		
	FP 21/19	16,76	22,18	5.288	4.124		FP 23/19	16,76	22,71	6.398	4.991		
	FP 21/20	17,64	23,06	5.540	4.321		FP 23/20	17,64	23,59	6.701	5.227		
	FP 21/21	18,52	23,94	5.792	4.518		FP 23/21	18,52	24,47	7.003	5.463		
	FP 21/22	19,40	24,82	6.044	4.715		FP 23/22	19,40	25,35	7.306	5.699		
	FP 21/23	20,28	25,70	6.297	4.911		FP 23/23	20,28	26,23	7.608	5.935		
	FP 21/24	21,16	26,58	6.549	5.108		FP 23/24	21,16	27,11	7.911	6.170		
	FP 21/25	22,04	27,46	6.801	5.305		FP 23/25	22,04	27,99	8.213	6.406		
	FP 21/26	22,92	28,34	7.053	5.501		FP 23/26	22,92	28,87	8.516	6.642		
	FP 21/27	23,80	29,22	7.305	5.698		FP 23/27	23,80	29,75	8.818	6.878		
	FP 21/28	24,68	30,10	7.557	5.895		FP 23/28	24,68	30,63	9.121	7.114		
	FP 21/29	25,56	30,98	7.810	6.092		FP 23/29	25,56	31,51	9.423	7.350		
	FP 21/30	26,44	31,86	8.062	6.288		FP 23/30	26,44	32,39	9.726	7.586		
	FP 21/31	27,32	32,74	8.314	6.485		FP 23/31	27,32	33,27	10.029	7.822		
	FP 21/32	28,20	33,62	8.566	6.682		FP 23/32	28,20	34,15	10.331	8.058		
	<b>FP 22</b> D=20,01 m (66 FT)	FP 22/04	3,56	9,24	1.677		1.308	<b>FP 24</b> D=21,83 m (72 FT)	FP 24/04	3,56	9,77	2.056	1.604
		FP 22/05	4,44	10,12	1.954		1.524		FP 24/05	4,44	10,65	2.385	1.861
		FP 22/06	5,32	11,00	2.230		1.740		FP 24/06	5,32	11,53	2.715	2.118
FP 22/07		6,20	11,88	2.507	1.956	FP 24/07	6,20		12,41	3.044	2.374		
FP 22/08		7,08	12,76	2.784	2.172	FP 24/08	7,08		13,29	3.374	2.631		
FP 22/09		7,96	13,64	3.061	2.387	FP 24/09	7,96		14,17	3.703	2.888		
FP 22/10		8,84	14,52	3.338	2.603	FP 24/10	8,84		15,05	4.032	3.145		
FP 22/11		9,72	15,40	3.614	2.819	FP 24/11	9,72		15,93	4.362	3.402		
FP 22/12		10,60	16,28	3.891	3.035	FP 24/12	10,60		16,81	4.691	3.659		
FP 22/13		11,48	17,16	4.168	3.251	FP 24/13	11,48		17,69	5.021	3.916		
FP 22/14		12,36	18,04	4.445	3.467	FP 24/14	12,36		18,57	5.350	4.173		
FP 22/15		13,24	18,92	4.722	3.683	FP 24/15	13,24		19,45	5.679	4.430		
FP 22/16		14,12	19,80	4.998	3.899	FP 24/16	14,12		20,33	6.009	4.687		
FP 22/17		15,00	20,68	5.275	4.115	FP 24/17	15,00		21,21	6.338	4.944		
FP 22/18		15,88	21,56	5.552	4.330	FP 24/18	15,88		22,09	6.668	5.201		
FP 22/19		16,76	22,44	5.829	4.546	FP 24/19	16,76		22,97	6.997	5.458		
FP 22/20		17,64	23,32	6.105	4.762	FP 24/20	17,64		23,85	7.326	5.715		
FP 22/21		18,52	24,20	6.382	4.978	FP 24/21	18,52		24,73	7.656	5.971		
FP 22/22		19,40	25,08	6.659	5.194	FP 24/22	19,40		25,61	7.985	6.228		
FP 22/23		20,28	25,96	6.936	5.410	FP 24/23	20,28		26,49	8.315	6.485		
FP 22/24		21,16	26,84	7.213	5.626	FP 24/24	21,16		27,37	8.644	6.742		
FP 22/25		22,04	27,72	7.489	5.842	FP 24/25	22,04		28,25	8.973	6.999		
FP 22/26		22,92	28,60	7.766	6.058	FP 24/26	22,92		29,13	9.303	7.256		
FP 22/27		23,80	29,49	8.043	6.273	FP 24/27	23,80		30,01	9.632	7.513		
FP 22/28		24,68	30,37	8.320	6.489	FP 24/28	24,68		30,89	9.962	7.770		
FP 22/29		25,56	31,25	8.597	6.705	FP 24/29	25,56		31,77	10.291	8.027		
FP 22/30		26,44	32,13	8.873	6.921	FP 24/30	26,44		32,65	10.620	8.284		
FP 22/31		27,32	33,01	9.150	7.137	FP 24/31	27,32		33,53	10.950	8.541		
FP 22/32		28,20	33,89	9.427	7.353	FP 24/32	28,20		34,41	11.279	8.798		



**FP FLAT BOTTOM SILOS DIMENSIONS AND CAPACITIES**

DIAMETER METERS (FT)	MODEL	HEIGHTS		CAPACITY		DIAMETER METERS (FT)	MODEL	HEIGHTS		CAPACITY			
		EAVES M (B)	OVERALL M (C)	M <sup>3</sup>	TONNES			EAVES M (B)	OVERALL M (C)	M <sup>3</sup>	TONNES		
<b>FP 25</b> D=22,74 m (75 FT)	FP 25/04	3,56	10,03	2.264	1.766	<b>FP 27</b> D=24,56 m (81 FT)	FP 27/04	3,56	10,56	2.717	2.119		
	FP 25/05	4,44	10,91	2.621	2.044		FP 27/05	4,44	11,44	3.134	2.444		
	FP 25/06	5,32	11,79	2.978	2.323		FP 27/06	5,32	12,32	3.550	2.769		
	FP 25/07	6,20	12,67	3.336	2.602		FP 27/07	6,20	13,20	3.967	3.095		
	FP 25/08	7,08	13,55	3.693	2.881		FP 27/08	7,08	14,08	4.384	3.420		
	FP 25/09	7,96	14,43	4.051	3.160		FP 27/09	7,96	14,96	4.801	3.745		
	FP 25/10	8,84	15,31	4.408	3.438		FP 27/10	8,84	15,84	5.218	4.070		
	FP 25/11	9,72	16,19	4.766	3.717		FP 27/11	9,72	16,72	5.635	4.395		
	FP 25/12	10,60	17,07	5.123	3.996		FP 27/12	10,60	17,60	6.052	4.720		
	FP 25/13	11,48	17,95	5.480	4.275		FP 27/13	11,48	18,48	6.469	5.046		
	FP 25/14	12,36	18,83	5.838	4.554		FP 27/14	12,36	19,36	6.886	5.371		
	FP 25/15	13,24	19,71	6.195	4.832		FP 27/15	13,24	20,24	7.302	5.696		
	FP 25/16	14,12	20,59	6.553	5.111		FP 27/16	14,12	21,12	7.719	6.021		
	FP 25/17	15,00	21,47	6.910	5.390		FP 27/17	15,00	22,00	8.136	6.346		
	FP 25/18	15,88	22,35	7.267	5.669		FP 27/18	15,88	22,88	8.553	6.671		
	FP 25/19	16,76	23,23	7.625	5.947		FP 27/19	16,76	23,76	8.970	6.997		
	FP 25/20	17,64	24,11	7.982	6.226		FP 27/20	17,64	24,64	9.387	7.322		
	FP 25/21	18,52	24,99	8.340	6.505		FP 27/21	18,52	25,52	9.804	7.647		
	FP 25/22	19,40	25,87	8.697	6.784		FP 27/22	19,40	26,40	10.221	7.972		
	FP 25/23	20,28	26,75	9.055	7.063		FP 27/23	20,28	27,28	10.638	8.297		
	FP 25/24	21,16	27,63	9.412	7.341		FP 27/24	21,16	28,16	11.055	8.623		
	FP 25/25	22,04	28,51	9.769	7.620		FP 27/25	22,04	29,04	11.471	8.948		
	FP 25/26	22,92	29,39	10.127	7.899		FP 27/26	22,92	29,92	11.888	9.273		
	FP 25/27	23,80	30,27	10.484	8.178		FP 27/27	23,80	30,80	12.305	9.598		
	FP 25/28	24,68	31,15	10.842	8.456		FP 27/28	24,68	31,68	12.722	9.923		
	FP 25/29	25,56	32,03	11.199	8.735		FP 27/29	25,56	32,56	13.139	10.248		
	FP 25/30	26,44	32,91	11.556	9.014		FP 27/30	26,44	33,44	13.556	10.574		
	FP 25/31	27,32	33,79	11.914	9.293		FP 27/31	27,32	34,32	13.973	10.899		
	FP 25/32	28,20	34,67	12.271	9.572		FP 27/32	28,20	35,20	14.390	11.224		
	<b>FP 26</b> D=23,65 m (78 FT)	FP 26/04	3,56	10,29	2.484		1.937	<b>FP 28</b> D=25,47 m (84 FT)	FP 28/04	3,56	10,82	2.963	2.311
		FP 26/05	4,44	11,17	2.870		2.239		FP 28/05	4,44	11,70	3.411	2.661
		FP 26/06	5,32	12,05	3.257		2.540		FP 28/06	5,32	12,58	3.859	3.010
FP 26/07		6,20	12,93	3.644	2.842	FP 28/07	6,20		13,46	4.308	3.360		
FP 26/08		7,08	13,81	4.030	3.143	FP 28/08	7,08		14,34	4.756	3.710		
FP 26/09		7,96	14,69	4.417	3.445	FP 28/09	7,96		15,22	5.204	4.059		
FP 26/10		8,84	15,57	4.803	3.747	FP 28/10	8,84		16,10	5.653	4.409		
FP 26/11		9,72	16,45	5.190	4.048	FP 28/11	9,72		16,98	6.101	4.759		
FP 26/12		10,60	17,33	5.576	4.350	FP 28/12	10,60		17,86	6.549	5.109		
FP 26/13		11,48	18,21	5.963	4.651	FP 28/13	11,48		18,74	6.998	5.458		
FP 26/14		12,36	19,09	6.350	4.953	FP 28/14	12,36		19,62	7.446	5.808		
FP 26/15		13,24	19,97	6.736	5.254	FP 28/15	13,24		20,50	7.894	6.158		
FP 26/16		14,12	20,85	7.123	5.556	FP 28/16	14,12		21,38	8.343	6.507		
FP 26/17		15,00	21,73	7.509	5.857	FP 28/17	15,00		22,26	8.791	6.857		
FP 26/18		15,88	22,61	7.896	6.159	FP 28/18	15,88		23,14	9.240	7.207		
FP 26/19		16,76	23,49	8.283	6.460	FP 28/19	16,76		24,02	9.688	7.557		
FP 26/20		17,64	24,37	8.669	6.762	FP 28/20	17,64		24,90	10.136	7.906		
FP 26/21		18,52	25,25	9.056	7.063	FP 28/21	18,52		25,78	10.585	8.256		
FP 26/22		19,40	26,13	9.442	7.365	FP 28/22	19,40		26,66	11.033	8.606		
FP 26/23		20,28	27,01	9.829	7.666	FP 28/23	20,28		27,54	11.481	8.955		
FP 26/24		21,16	27,90	10.215	7.968	FP 28/24	21,16		28,42	11.930	9.305		
FP 26/25		22,04	28,78	10.602	8.270	FP 28/25	22,04		29,30	12.378	9.655		
FP 26/26		22,92	29,66	10.989	8.571	FP 28/26	22,92		30,18	12.826	10.004		
FP 26/27		23,80	30,54	11.375	8.873	FP 28/27	23,80		31,06	13.275	10.354		
FP 26/28		24,68	31,42	11.762	9.174	FP 28/28	24,68		31,94	13.723	10.704		
FP 26/29		25,56	32,30	12.148	9.476	FP 28/29	25,56		32,82	14.171	11.054		
FP 26/30		26,44	33,18	12.535	9.777	FP 28/30	26,44		33,70	14.620	11.403		
FP 26/31		27,32	34,06	12.921	10.079	FP 28/31	27,32		34,58	15.068	11.753		
FP 26/32		28,20	34,94	13.308	10.380	FP 28/32	28,20		35,46	15.516	12.103		

**FP FLAT BOTTOM SILOS DIMENSIONS AND CAPACITIES**

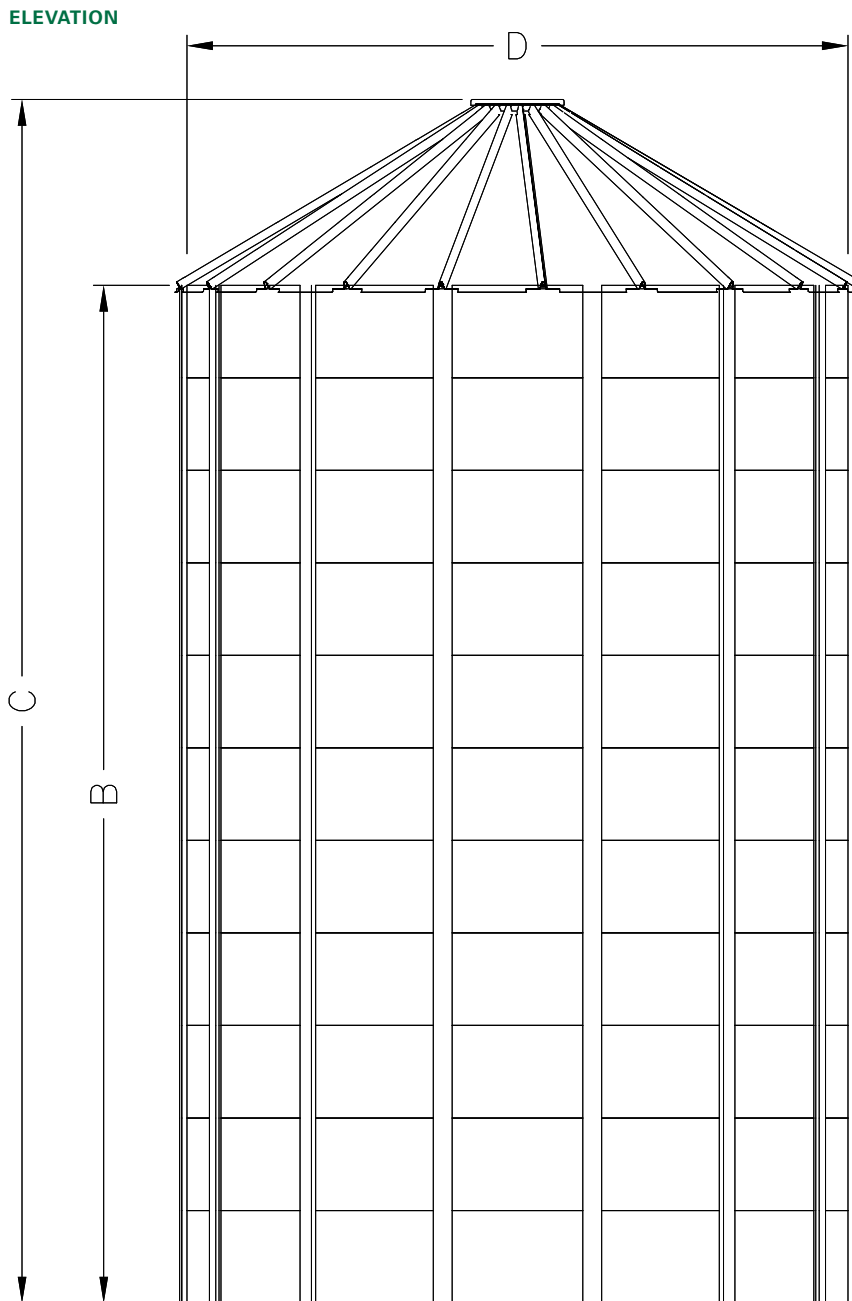
DIAMETER METERS (FT)	MODEL	HEIGHTS		CAPACITY		DIAMETER METERS (FT)	MODEL	HEIGHTS		CAPACITY			
		EAVES M (B)	OVERALL M (C)	M <sup>3</sup>	TONNES			EAVES M (B)	OVERALL M (C)	M <sup>3</sup>	TONNES		
<b>FP 29</b> D=26,38 m (87 FT)	FP 29/04	3,56	11,08	3.222	2.513	<b>FP 31</b> D=28,20 m (93 FT)	FP 31/04	3,56	11,61	3.783	2.950		
	FP 29/05	4,44	11,96	3.703	2.888		FP 31/05	4,44	12,49	4.332	3.379		
	FP 29/06	5,32	12,84	4.184	3.264		FP 31/06	5,32	13,37	4.882	3.808		
	FP 29/07	6,20	13,72	4.665	3.639		FP 31/07	6,20	14,25	5.431	4.236		
	FP 29/08	7,08	14,60	5.146	4.014		FP 31/08	7,08	15,13	5.981	4.665		
	FP 29/09	7,96	15,48	5.627	4.389		FP 31/09	7,96	16,01	6.530	5.094		
	FP 29/10	8,84	16,36	6.108	4.764		FP 31/10	8,84	16,89	7.080	5.522		
	FP 29/11	9,72	17,24	6.589	5.139		FP 31/11	9,72	17,77	7.630	5.951		
	FP 29/12	10,60	18,12	7.070	5.514		FP 31/12	10,60	18,65	8.179	6.380		
	FP 29/13	11,48	19,00	7.551	5.889		FP 31/13	11,48	19,53	8.729	6.808		
	FP 29/14	12,36	19,88	8.032	6.265		FP 31/14	12,36	20,41	9.278	7.237		
	FP 29/15	13,24	20,76	8.513	6.640		FP 31/15	13,24	21,29	9.828	7.666		
	FP 29/16	14,12	21,64	8.993	7.015		FP 31/16	14,12	22,17	10.377	8.094		
	FP 29/17	15,00	22,52	9.474	7.390		FP 31/17	15,00	23,05	10.927	8.523		
	FP 29/18	15,88	23,40	9.955	7.765		FP 31/18	15,88	23,93	11.476	8.952		
	FP 29/19	16,76	24,28	10.436	8.140		FP 31/19	16,76	24,81	12.026	9.380		
	FP 29/20	17,64	25,16	10.917	8.515		FP 31/20	17,64	25,69	12.576	9.809		
	FP 29/21	18,52	26,04	11.398	8.891		FP 31/21	18,52	26,57	13.125	10.238		
	FP 29/22	19,40	26,92	11.879	9.266		FP 31/22	19,40	27,45	13.675	10.666		
	FP 29/23	20,28	27,80	12.360	9.641		FP 31/23	20,28	28,33	14.224	11.095		
	FP 29/24	21,16	28,68	12.841	10.016		FP 31/24	21,16	29,21	14.774	11.524		
	FP 29/25	22,04	29,56	13.322	10.391		FP 31/25	22,04	30,09	15.323	11.952		
	FP 29/26	22,92	30,44	13.803	10.766		FP 31/26	22,92	30,97	15.873	12.381		
	FP 29/27	23,80	31,32	14.284	11.141		FP 31/27	23,80	31,85	16.423	12.810		
	FP 29/28	24,68	32,20	14.765	11.516		FP 31/28	24,68	32,73	16.972	13.238		
	FP 29/29	25,56	33,08	15.246	11.892		FP 31/29	25,56	33,61	17.522	13.667		
	FP 29/30	26,44	33,96	15.727	12.267		FP 31/30	26,44	34,49	18.071	14.096		
	FP 29/31	27,32	34,84	16.208	12.642		FP 31/31	27,32	35,37	18.621	14.524		
	FP 29/32	28,20	35,72	16.688	13.017		FP 31/32	28,20	36,25	19.170	14.953		
	<b>FP 30</b> D=27,29 m (90 FT)	FP 30/04	3,56	11,34	3.495		2.726	<b>FP 32</b> D=29,11 m (96 FT)	FP 32/04	3,56	11,87	4.084	3.186
		FP 30/05	4,44	12,22	4.010		3.128		FP 32/05	4,44	12,75	4.670	3.642
		FP 30/06	5,32	13,10	4.525		3.529		FP 32/06	5,32	13,63	5.255	4.099
FP 30/07		6,20	13,98	5.039	3.931	FP 32/07	6,20		14,51	5.841	4.556		
FP 30/08		7,08	14,86	5.554	4.332	FP 32/08	7,08		15,39	6.427	5.013		
FP 30/09		7,96	15,74	6.069	4.734	FP 32/09	7,96		16,27	7.012	5.469		
FP 30/10		8,84	16,62	6.583	5.135	FP 32/10	8,84		17,15	7.598	5.926		
FP 30/11		9,72	17,50	7.098	5.537	FP 32/11	9,72		18,03	8.183	6.383		
FP 30/12		10,60	18,38	7.613	5.938	FP 32/12	10,60		18,91	8.769	6.840		
FP 30/13		11,48	19,26	8.127	6.339	FP 32/13	11,48		19,79	9.355	7.297		
FP 30/14		12,36	20,14	8.642	6.741	FP 32/14	12,36		20,67	9.940	7.753		
FP 30/15		13,24	21,02	9.157	7.142	FP 32/15	13,24		21,55	10.526	8.210		
FP 30/16		14,12	21,90	9.672	7.544	FP 32/16	14,12		22,43	11.111	8.667		
FP 30/17		15,00	22,78	10.186	7.945	FP 32/17	15,00		23,31	11.697	9.124		
FP 30/18		15,88	23,66	10.701	8.347	FP 32/18	15,88		24,19	12.282	9.580		
FP 30/19		16,76	24,54	11.216	8.748	FP 32/19	16,76		25,07	12.868	10.037		
FP 30/20		17,64	25,42	11.730	9.150	FP 32/20	17,64		25,95	13.454	10.494		
FP 30/21		18,52	26,31	12.245	9.551	FP 32/21	18,52		26,83	14.039	10.951		
FP 30/22		19,40	27,19	12.760	9.952	FP 32/22	19,40		27,71	14.625	11.407		
FP 30/23		20,28	28,07	13.274	10.354	FP 32/23	20,28		28,59	15.210	11.864		
FP 30/24		21,16	28,95	13.789	10.755	FP 32/24	21,16		29,47	15.796	12.321		
FP 30/25		22,04	29,83	14.304	11.157	FP 32/25	22,04		30,35	16.382	12.778		
FP 30/26		22,92	30,71	14.818	11.558	FP 32/26	22,92		31,23	16.967	13.234		
FP 30/27		23,80	31,59	15.333	11.960	FP 32/27	23,80		32,11	17.553	13.691		
FP 30/28		24,68	32,47	15.848	12.361	FP 32/28	24,68		32,99	18.138	14.148		
FP 30/29		25,56	33,35	16.362	12.763	FP 32/29	25,56		33,87	18.724	14.605		
FP 30/30		26,44	34,23	16.877	13.164	FP 32/30	26,44		34,75	19.310	15.061		
FP 30/31		27,32	35,11	17.392	13.566	FP 32/31	27,32		35,63	19.895	15.518		
FP 30/32		28,20	35,99	17.906	13.967	FP 32/32	28,20		36,51	20.481	15.975		



**FP FLAT BOTTOM SILOS DIMENSIONS AND CAPACITIES**

DIAMETER METERS (FT)	MODEL	HEIGHTS		CAPACITY		DIAMETER METERS (FT)	MODEL	HEIGHTS		CAPACITY			
		EAVES M (B)	OVERALL M (C)	M <sup>3</sup>	TONNES			EAVES M (B)	OVERALL M (C)	M <sup>3</sup>	TONNES		
<b>FP 33</b> D=30,02 m (99 FT)	FP 33/04	3,56	12,07	4.400	3.432	<b>FP 35</b> D=31,83 m (105 FT)	FP 35/04	3,56	12,60	5.078	3.961		
	FP 33/05	4,44	12,95	5.023	3.918		FP 35/05	4,44	13,48	5.779	4.508		
	FP 33/06	5,32	13,83	5.646	4.404		FP 35/06	5,32	14,36	6.479	5.054		
	FP 33/07	6,20	14,71	6.269	4.890		FP 35/07	6,20	15,24	7.180	5.600		
	FP 33/08	7,08	15,59	6.892	5.375		FP 35/08	7,08	16,12	7.881	6.147		
	FP 33/09	7,96	16,47	7.514	5.861		FP 35/09	7,96	17,00	8.581	6.693		
	FP 33/10	8,84	17,35	8.137	6.347		FP 35/10	8,84	17,88	9.282	7.240		
	FP 33/11	9,72	18,23	8.760	6.833		FP 35/11	9,72	18,76	9.982	7.786		
	FP 33/12	10,60	19,11	9.383	7.318		FP 35/12	10,60	19,64	10.683	8.332		
	FP 33/13	11,48	19,99	10.005	7.804		FP 35/13	11,48	20,52	11.383	8.879		
	FP 33/14	12,36	20,87	10.628	8.290		FP 35/14	12,36	21,40	12.084	9.425		
	FP 33/15	13,24	21,75	11.251	8.776		FP 35/15	13,24	22,28	12.784	9.972		
	FP 33/16	14,12	22,63	11.874	9.261		FP 35/16	14,12	23,16	13.485	10.518		
	FP 33/17	15,00	23,51	12.496	9.747		FP 35/17	15,00	24,04	14.185	11.065		
	FP 33/18	15,88	24,39	13.119	10.233		FP 35/18	15,88	24,92	14.886	11.611		
	FP 33/19	16,76	25,27	13.742	10.719		FP 35/19	16,76	25,80	15.586	12.157		
	FP 33/20	17,64	26,15	14.365	11.204		FP 35/20	17,64	26,68	16.287	12.704		
	FP 33/21	18,52	27,03	14.987	11.690		FP 35/21	18,52	27,56	16.987	13.250		
	FP 33/22	19,40	27,91	15.610	12.176		FP 35/22	19,40	28,44	17.688	13.797		
	FP 33/23	20,28	28,79	16.233	12.662		FP 35/23	20,28	29,32	18.389	14.343		
	FP 33/24	21,16	29,67	16.856	13.147		FP 35/24	21,16	30,20	19.089	14.889		
	FP 33/25	22,04	30,55	17.478	13.633		FP 35/25	22,04	31,08	19.790	15.436		
	FP 33/26	22,92	31,43	18.101	14.119		FP 35/26	22,92	31,96	20.490	15.982		
	FP 33/27	23,80	32,31	18.724	14.605		FP 35/27	23,80	32,84	21.191	16.529		
	FP 33/28	24,68	33,19	19.347	15.090		FP 35/28	24,68	33,72	21.891	17.075		
	FP 33/29	25,56	34,07	19.970	15.576		FP 35/29	25,56	34,60	22.592	17.622		
	FP 33/30	26,44	34,95	20.592	16.062		FP 35/30	26,44	35,48	23.292	18.168		
	FP 33/31	27,32	35,83	21.215	16.548		FP 35/31	27,32	36,36	23.993	18.714		
	FP 33/32	28,20	36,71	21.838	17.034		FP 35/32	28,20	37,24	24.693	19.261		
	<b>FP 34</b> D=30,93 m (102 FT)	FP 34/04	3,56	12,33	4.732		3.691	<b>FP 36</b> D=32,74 m (108 FT)	FP 36/04	3,56	12,86	5.441	4.244
		FP 34/05	4,44	13,21	5.393		4.206		FP 36/05	4,44	13,74	6.182	4.822
		FP 34/06	5,32	14,09	6.054		4.722		FP 36/06	5,32	14,62	6.923	5.400
FP 34/07		6,20	14,98	6.715	5.238	FP 36/07	6,20		15,50	7.664	5.978		
FP 34/08		7,08	15,86	7.376	5.753	FP 36/08	7,08		16,38	8.405	6.556		
FP 34/09		7,96	16,74	8.037	6.269	FP 36/09	7,96		17,26	9.146	7.134		
FP 34/10		8,84	17,62	8.698	6.785	FP 36/10	8,84		18,14	9.887	7.712		
FP 34/11		9,72	18,50	9.359	7.300	FP 36/11	9,72		19,02	10.629	8.290		
FP 34/12		10,60	19,38	10.020	7.816	FP 36/12	10,60		19,90	11.370	8.868		
FP 34/13		11,48	20,26	10.681	8.332	FP 36/13	11,48		20,78	12.111	9.446		
FP 34/14		12,36	21,14	11.343	8.847	FP 36/14	12,36		21,66	12.852	10.025		
FP 34/15		13,24	22,02	12.004	9.363	FP 36/15	13,24		22,54	13.593	10.603		
FP 34/16		14,12	22,90	12.665	9.878	FP 36/16	14,12		23,42	14.334	11.181		
FP 34/17		15,00	23,78	13.326	10.394	FP 36/17	15,00		24,30	15.075	11.759		
FP 34/18		15,88	24,66	13.987	10.910	FP 36/18	15,88		25,18	15.817	12.337		
FP 34/19		16,76	25,54	14.648	11.425	FP 36/19	16,76		26,06	16.558	12.915		
FP 34/20		17,64	26,42	15.309	11.941	FP 36/20	17,64		26,94	17.299	13.493		
FP 34/21		18,52	27,30	15.970	12.457	FP 36/21	18,52		27,82	18.040	14.071		
FP 34/22		19,40	28,18	16.631	12.972	FP 36/22	19,40		28,70	18.781	14.649		
FP 34/23		20,28	29,06	17.292	13.488	FP 36/23	20,28		29,58	19.522	15.227		
FP 34/24		21,16	29,94	17.953	14.004	FP 36/24	21,16		30,46	20.263	15.805		
FP 34/25		22,04	30,82	18.614	14.519	FP 36/25	22,04		31,34	21.004	16.384		
FP 34/26		22,92	31,70	19.275	15.035	FP 36/26	22,92		32,22	21.746	16.962		
FP 34/27		23,80	32,58	19.937	15.551	FP 36/27	23,80		33,10	22.487	17.540		
FP 34/28		24,68	33,46	20.598	16.066	FP 36/28	24,68		33,98	23.228	18.118		
FP 34/29		25,56	34,34	21.259	16.582	FP 36/29	25,56		34,86	23.969	18.696		
FP 34/30		26,44	35,22	21.920	17.097	FP 36/30	26,44		35,74	24.710	19.274		
FP 34/31		27,32	36,10	22.581	17.613	FP 36/31	27,32		36,62	25.451	19.852		
FP 34/32		28,20	36,98	23.242	18.129	FP 36/32	28,20		37,50	26.192	20.430		

## FP FLAT BOTTOM SILOS DIMENSIONS AND CAPACITIES



### NOTE

The maximum capacity of the silos is calculated assuming an angle of repose of 28° and based on uncompacted cereals weight of 780 kg/m<sup>3</sup>.

Silos are designed to meet:

- 144 km/h wind speed
- 75 kg/m<sup>2</sup> of snow on the roof

Standard roof peak capacity varies from 250 to 15.000 kg, depending on silo diameter.

AGI FRAME reserves right to change specifications without prior notice.



**FC-45 HOPPER SILOS DIMENSIONS AND CAPACITIES**

DIAMETER METERS (FT)	MODEL	HEIGHTS			CAPACITY		
		STRUCTURES M (A)	EAVES M (B)	OVERALL M (C)	M <sup>3</sup>	TONNES	
<b>FC-45 04</b> D=3,64 m (12 FT)	FC-45 04/04	2,49	6,05	7,04	47	36	
	FC-45 04/05	2,49	6,93	7,92	56	44	
	FC-45 04/06	2,49	7,81	8,80	65	51	
	FC-45 04/07	2,49	8,69	9,68	74	58	
	FC-45 04/08	2,49	9,57	10,56	83	65	
	FC-45 04/09	2,49	10,45	11,44	92	72	
	FC-45 04/10	2,49	11,33	12,32	102	79	
	FC-45 04/11	2,49	12,21	13,20	111	86	
	FC-45 04/12	2,49	13,09	14,08	120	93	
	FC-45 04/13	2,49	13,97	14,96	129	101	
	FC-45 04/14	2,49	14,85	15,84	138	108	
	FC-45 04/15	2,49	15,73	16,72	147	115	
	FC-45 04/16	2,49	16,61	17,60	156	122	
	FC-45 04/17	2,49	17,49	18,48	166	129	
	FC-45 04/18	2,49	18,37	19,36	175	136	
	FC-45 04/19	2,49	19,25	20,24	184	143	
	FC-45 04/20	2,49	20,13	21,12	193	151	
	<b>FC-45 05</b> D=4,55 m (15 FT)	FC-45 05/04	2,93	6,48	7,73	77	60
		FC-45 05/05	2,93	7,36	8,61	91	71
		FC-45 05/06	2,93	8,24	9,49	105	82
FC-45 05/07		2,93	9,12	10,37	120	93	
FC-45 05/08		2,93	10,00	11,26	134	104	
FC-45 05/09		2,93	10,88	12,14	148	116	
FC-45 05/10		2,93	11,76	13,02	162	127	
FC-45 05/11		2,93	12,64	13,90	177	138	
FC-45 05/12		2,93	13,52	14,78	191	149	
FC-45 05/13		2,93	14,40	15,66	205	160	
FC-45 05/14		2,93	15,28	16,54	220	171	
FC-45 05/15		2,93	16,17	17,42	234	182	
FC-45 05/16		2,93	17,05	18,30	248	194	
FC-45 05/17		2,93	17,93	19,18	263	205	
FC-45 05/18		2,93	18,81	20,06	277	216	
FC-45 05/19		2,93	19,69	20,94	291	227	
FC-45 05/20		2,93	20,57	21,82	305	238	
FC-45 05/21		2,93	21,45	22,70	320	249	
FC-45 05/22		2,93	22,33	23,58	334	261	
FC-45 05/23		2,93	23,21	24,46	348	272	
FC-45 05/24		2,93	24,09	25,34	363	283	
FC-45 05/25		2,93	24,97	26,22	377	294	

DIAMETER METERS (FT)	MODEL	HEIGHTS			CAPACITY		
		STRUCTURES M (A)	EAVES M (B)	OVERALL M (C)	M <sup>3</sup>	TONNES	
<b>FC-45 06</b> D=5,46 m (18 FT)	FC-45 06/04	3,39	6,95	8,46	116	90	
	FC-45 06/05	3,39	7,83	9,34	136	106	
	FC-45 06/06	3,39	8,71	10,22	157	122	
	FC-45 06/07	3,39	9,59	11,10	178	139	
	FC-45 06/08	3,39	10,47	11,98	198	155	
	FC-45 06/09	3,39	11,35	12,86	219	171	
	FC-45 06/10	3,39	12,23	13,74	239	187	
	FC-45 06/11	3,39	13,11	14,62	260	203	
	FC-45 06/12	3,39	13,99	15,50	281	219	
	FC-45 06/13	3,39	14,87	16,38	301	235	
	FC-45 06/14	3,39	15,75	17,26	322	251	
	FC-45 06/15	3,39	16,63	18,14	342	267	
	FC-45 06/16	3,39	17,51	19,02	363	283	
	FC-45 06/17	3,39	18,39	19,90	383	299	
	FC-45 06/18	3,39	19,27	20,78	404	315	
	FC-45 06/19	3,39	20,15	21,66	425	331	
	FC-45 06/20	3,39	21,03	22,54	445	347	
	FC-45 06/21	3,39	21,91	23,42	466	363	
	FC-45 06/22	3,39	22,79	24,30	486	379	
	FC-45 06/23	3,39	23,67	25,18	507	395	
	FC-45 06/24	3,39	24,55	26,06	528	412	
	<b>FC-45 07</b> D=6,37 m (21 FT)	FC-45 07/04	3,84	7,39	9,17	165	129
		FC-45 07/05	3,84	8,27	10,05	193	151
		FC-45 07/06	3,84	9,15	10,93	221	172
FC-45 07/07		3,84	10,03	11,81	249	194	
FC-45 07/08		3,84	10,91	12,69	277	216	
FC-45 07/09		3,84	11,79	13,57	305	238	
FC-45 07/10		3,84	12,67	14,45	333	260	
FC-45 07/11		3,84	13,55	15,33	361	282	
FC-45 07/12		3,84	14,43	16,21	389	304	
FC-45 07/13		3,84	15,31	17,09	417	325	
FC-45 07/14		3,84	16,19	17,97	445	347	
FC-45 07/15		3,84	17,08	18,85	473	369	
FC-45 07/16		3,84	17,96	19,73	501	391	
FC-45 07/17		3,84	18,84	20,61	529	413	
FC-45 07/18		3,84	19,72	21,49	557	435	
FC-45 07/19		3,84	20,60	22,37	585	457	
FC-45 07/20		3,84	21,48	23,25	613	478	
FC-45 07/21		3,84	22,36	24,13	641	500	
FC-45 07/22		3,84	23,24	25,01	669	522	
FC-45 07/23		3,84	24,12	25,89	697	544	
FC-45 07/24		3,84	25,00	26,77	725	566	
FC-45 07/25		3,84	25,88	27,65	754	588	

**FC-45 HOPPER SILOS DIMENSIONS AND CAPACITIES**

DIAMETER METERS (FT)	MODEL	HEIGHTS			CAPACITY	
		STRUCTURES M (A)	EAVES M (B)	OVERALL M (C)	M <sup>3</sup>	TONNES
<b>FC-45 08</b>  D=7,28 m (24 FT)	FC-45 08/04	4,29	7,85	9,89	225	176
	FC-45 08/05	4,29	8,73	10,77	262	204
	FC-45 08/06	4,29	9,61	11,65	298	233
	FC-45 08/07	4,29	10,49	12,53	335	261
	FC-45 08/08	4,29	11,37	13,41	372	290
	FC-45 08/09	4,29	12,25	14,29	408	318
	FC-45 08/10	4,29	13,13	15,17	445	347
	FC-45 08/11	4,29	14,01	16,05	481	376
	FC-45 08/12	4,29	14,89	16,93	518	404
	FC-45 08/13	4,29	15,77	17,81	555	433
	FC-45 08/14	4,29	16,65	18,69	591	461
	FC-45 08/15	4,29	17,53	19,57	628	490
	FC-45 08/16	4,29	18,41	20,45	664	518
	FC-45 08/17	4,29	19,29	21,33	701	547
	FC-45 08/18	4,29	20,17	22,21	738	575
	FC-45 08/19	4,29	21,05	23,09	774	604
	FC-45 08/20	4,29	21,93	23,97	811	632
	FC-45 08/21	4,29	22,81	24,85	847	661
	FC-45 08/22	4,29	23,69	25,73	884	690
	FC-45 08/23	4,29	24,57	26,61	921	718
	FC-45 08/24	4,29	25,45	27,49	957	747
	FC-45 08/25	4,29	26,34	28,37	994	775

DIAMETER METERS (FT)	MODEL	HEIGHTS			CAPACITY	
		STRUCTURES M (A)	EAVES M (B)	OVERALL M (C)	M <sup>3</sup>	TONNES
<b>FC-45 09</b>  D=8,19 m (27 FT)	FC-45 09/04	5,29	8,85	11,15	303	236
	FC-45 09/05	5,29	9,73	12,03	349	272
	FC-45 09/06	5,29	10,61	12,91	395	308
	FC-45 09/07	5,29	11,49	13,79	442	344
	FC-45 09/08	5,29	12,37	14,67	488	381
	FC-45 09/09	5,29	13,25	15,55	534	417
	FC-45 09/10	5,29	14,13	16,43	580	453
	FC-45 09/11	5,29	15,01	17,31	627	489
	FC-45 09/12	5,29	15,89	18,19	673	525
	FC-45 09/13	5,29	16,77	19,07	719	561
	FC-45 09/14	5,29	17,65	19,95	766	597
	FC-45 09/15	5,29	18,53	20,83	812	633
	FC-45 09/16	5,29	19,41	21,71	858	670
	FC-45 09/17	5,29	20,29	22,59	905	706
	FC-45 09/18	5,29	21,17	23,47	951	742
	FC-45 09/19	5,29	22,05	24,35	997	778
	FC-45 09/20	5,29	22,93	25,23	1.044	814
	FC-45 09/21	5,29	23,81	26,11	1.09	850
	FC-45 09/22	5,29	24,69	26,99	1.136	886
	FC-45 09/23	5,29	25,57	27,87	1.183	922
	FC-45 09/24	5,29	26,45	28,75	1.229	959
	FC-45 09/25	5,29	27,33	29,63	1.275	995
	FC-45 09/26	5,29	28,21	30,51	1.322	1.031
	FC-45 09/27	5,29	29,09	31,39	1.368	1.067
	FC-45 09/28	5,29	29,97	32,27	1.414	1.103
	FC-45 09/29	5,29	30,85	33,15	1.461	1.139
	FC-45 09/30	5,29	31,73	34,03	1.507	1.175



**FC-45 HOPPER SILOS DIMENSIONS AND CAPACITIES**

DIAMETER METERS (FT)	MODEL	HEIGHTS			CAPACITY	
		STRUCTURES M (A)	EAVES M (B)	OVERALL M (C)	M <sup>3</sup>	TONNES
<b>FC-45 10</b> <b>D=9,10 m</b> (30 FT)	FC-45 10/04	5,84	9,39	11,82	391	305
	FC-45 10/05	5,84	10,27	12,70	448	350
	FC-45 10/06	5,84	11,15	13,58	506	394
	FC-45 10/07	5,84	12,03	14,46	563	439
	FC-45 10/08	5,84	12,91	15,34	620	484
	FC-45 10/09	5,84	13,79	16,22	677	528
	FC-45 10/10	5,84	14,67	17,10	734	573
	FC-45 10/11	5,84	15,55	17,98	792	617
	FC-45 10/12	5,84	16,43	18,86	849	662
	FC-45 10/13	5,84	17,31	19,74	906	707
	FC-45 10/14	5,84	18,19	20,62	963	751
	FC-45 10/15	5,84	19,08	21,50	1.02	796
	FC-45 10/16	5,84	19,96	22,38	1.078	841
	FC-45 10/17	5,84	20,84	23,26	1.135	886
	FC-45 10/18	5,84	21,72	24,14	1.192	930
	FC-45 10/19	5,84	22,60	25,02	1.250	975
	FC-45 10/20	5,84	23,48	25,90	1.307	1.019
	FC-45 10/21	5,84	24,36	26,78	1.364	1.064
	FC-45 10/22	5,84	25,24	27,66	1.421	1.109
	FC-45 10/23	5,84	26,12	28,54	1.478	1.153
	FC-45 10/24	5,84	27,00	29,42	1.536	1.198
	FC-45 10/25	5,84	27,88	30,30	1.593	1.242
	FC-45 10/26	5,84	28,76	31,18	1.650	1.287
	FC-45 10/27	5,84	29,64	32,06	1.707	1.332
	FC-45 10/28	5,84	30,52	32,94	1.764	1.376
	FC-45 10/29	5,84	31,40	33,82	1.822	1.421
	FC-45 10/30	5,84	32,28	34,70	1.879	1.465

DIAMETER METERS (FT)	MODEL	HEIGHTS			CAPACITY	
		STRUCTURES M (A)	EAVES M (B)	OVERALL M (C)	M <sup>3</sup>	TONNES
<b>FC-45 11</b> <b>D=10,01 m</b> (33 FT)	FC-45 11/04	6,31	9,87	12,56	492	384
	FC-45 11/05	6,31	10,75	13,44	562	438
	FC-45 11/06	6,31	11,63	14,32	631	492
	FC-45 11/07	6,31	12,51	15,20	700	546
	FC-45 11/08	6,31	13,39	16,08	769	600
	FC-45 11/09	6,31	14,27	16,96	838	654
	FC-45 11/10	6,31	15,15	17,84	908	708
	FC-45 11/11	6,31	16,03	18,72	977	762
	FC-45 11/12	6,31	16,91	19,60	1.046	816
	FC-45 11/13	6,31	17,79	20,48	1.115	870
	FC-45 11/14	6,31	18,67	21,36	1.184	924
	FC-45 11/15	6,31	19,55	22,24	1.254	978
	FC-45 11/16	6,33	20,45	23,14	1.324	1.032
	FC-45 11/17	6,33	21,33	24,02	1.393	1.086
	FC-45 11/18	6,33	22,21	24,90	1.462	1.140
	FC-45 11/19	6,33	23,09	25,78	1.531	1.194
	FC-45 11/20	6,33	23,97	26,66	1.600	1.248
	FC-45 11/21	6,33	24,85	27,54	1.670	1.302
	FC-45 11/22	6,33	25,73	28,42	1.739	1.356
	FC-45 11/23	6,33	26,61	29,30	1.808	1.410
	FC-45 11/24	6,33	27,49	30,18	1.877	1.464
	FC-45 11/25	6,33	28,37	31,06	1.946	1.518
	FC-45 11/26	6,33	29,25	31,94	2.016	1.572
	FC-45 11/27	6,33	30,13	32,82	2.085	1.626
	FC-45 11/28	6,33	31,01	33,70	2.154	1.680
	FC-45 11/29	6,33	31,89	34,58	2.223	1.734
	FC-45 11/30	6,33	32,77	35,46	2.292	1.788

**FC-45 HOPPER SILOS DIMENSIONS AND CAPACITIES**

DIAMETER METERS (FT)	MODEL	HEIGHTS			CAPACITY		DIAMETER METERS (FT)	MODEL	HEIGHTS			CAPACITY	
		STRUCTURES M (A)	EAVES M (B)	OVERALL M (C)	M <sup>3</sup>	TONNES			STRUCTURES M (A)	EAVES M (B)	OVERALL M (C)	M <sup>3</sup>	TONNES
<b>FC-45 12</b> <b>D=10,91 m</b> (30 FT)	FC-45 12/04	6,82	10,38	13,33	609	475	<b>FC-45 13</b> <b>D=11,82 m</b> (33 FT)	FC-45 13/04	7,27	10,82	14,03	743	580
	FC-45 12/05	6,82	11,26	14,21	691	539		FC-45 13/05	7,27	11,70	14,91	840	655
	FC-45 12/06	6,82	12,14	15,09	773	603		FC-45 13/06	7,27	12,58	15,79	936	730
	FC-45 12/07	6,82	13,02	15,97	856	667		FC-45 13/07	7,27	13,46	16,67	1.033	806
	FC-45 12/08	6,82	13,90	16,85	938	732		FC-45 13/08	7,27	14,34	17,56	1.13	881
	FC-45 12/09	6,82	14,78	17,73	1.02	796		FC-45 13/09	7,27	15,22	18,44	1.226	957
	FC-45 12/10	6,82	15,66	18,61	1.103	860		FC-45 13/10	7,27	16,10	19,32	1.323	1.032
	FC-45 12/11	6,82	16,54	19,49	1.185	924		FC-45 13/11	7,27	16,98	20,20	1.420	1.107
	FC-45 12/12	6,82	17,42	20,37	1.267	989		FC-45 13/12	7,27	17,86	21,08	1.516	1.183
	FC-45 12/13	6,82	18,30	21,25	1.350	1.053		FC-45 13/13	7,27	18,74	21,96	1.613	1.258
	FC-45 12/14	6,82	19,18	22,13	1.432	1.117		FC-45 13/14	7,27	19,62	22,84	1.710	1.333
	FC-45 12/15	6,82	20,06	23,01	1.515	1.181		FC-45 13/15	7,27	20,51	23,72	1.806	1.409
	FC-45 12/16	6,82	20,94	23,89	1.598	1.247		FC-45 13/16	7,27	21,39	24,60	1.904	1.485
	FC-45 12/17	6,82	21,82	24,77	1.681	1.311		FC-45 13/17	7,27	22,27	25,48	2.001	1.560
	FC-45 12/18	6,82	22,70	25,65	1.763	1.375		FC-45 13/18	7,27	23,15	26,36	2.097	1.636
	FC-45 12/19	6,82	23,58	26,53	1.845	1.439		FC-45 13/19	7,27	24,03	27,24	2.194	1.711
	FC-45 12/20	6,82	24,46	27,41	1.928	1.504		FC-45 13/20	7,27	24,91	28,12	2.291	1.787
	FC-45 12/21	6,82	25,34	28,29	2.010	1.568		FC-45 13/21	7,27	25,79	29,00	2.387	1.862
	FC-45 12/22	6,82	26,22	29,17	2.092	1.632		FC-45 13/22	7,27	26,67	29,88	2.484	1.937
	FC-45 12/23	6,82	27,10	30,05	2.175	1.696		FC-45 13/23	7,27	27,55	30,76	2.581	2.013
	FC-45 12/24	6,82	27,98	30,93	2.257	1.761		FC-45 13/24	7,27	28,43	31,64	2.677	2.088
	FC-45 12/25	6,82	28,86	31,81	2.339	1.825		FC-45 13/25	7,27	29,31	32,52	2.774	2.164
	FC-45 12/26	6,82	29,74	32,69	2.422	1.889		FC-45 13/26	7,27	30,19	33,40	2.870	2.239
	FC-45 12/27	6,82	30,62	33,57	2.504	1.953		FC-45 13/27	7,27	31,07	34,28	2.967	2.314
	FC-45 12/28	6,82	31,50	34,45	2.586	2.017		FC-45 13/28	7,27	31,95	35,16	3.064	2.390
	FC-45 12/29	6,82	32,38	35,33	2.669	2.082		FC-45 13/29	7,27	32,83	36,04	3.160	2.465
	FC-45 12/30	6,82	33,26	36,21	2.751	2.146		FC-45 13/30	7,27	33,71	36,92	3.257	2.540



**FC-45 HOPPER SILOS DIMENSIONS AND CAPACITIES**

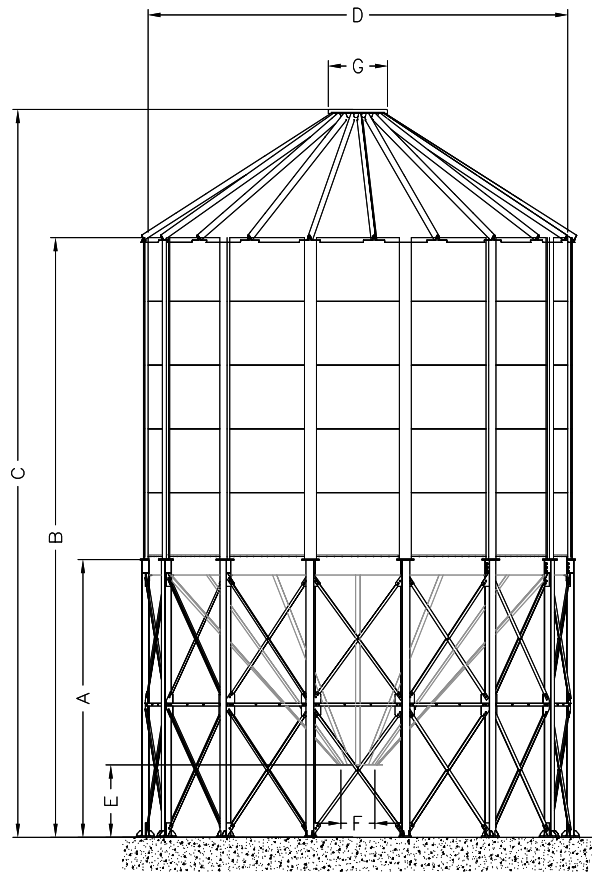
DIAMETER METERS (FT)	MODEL	HEIGHTS			CAPACITY	
		STRUCTURES M (A)	EAVES M (B)	OVERALL M (C)	M <sup>3</sup>	TONNES
<b>FC-45 14</b> <b>D=12,73 m</b> (42 FT)	FC-45 14/04	7,71	11,27	14,74	891	695
	FC-45 14/05	7,71	12,15	15,62	1.004	783
	FC-45 14/06	7,71	13,03	16,50	1.116	870
	FC-45 14/07	7,71	13,91	17,38	1.228	958
	FC-45 14/08	7,71	14,79	18,26	1.340	1.045
	FC-45 14/09	7,71	15,67	19,14	1.452	1.132
	FC-45 14/10	7,71	16,55	20,02	1.564	1.22
	FC-45 14/11	7,71	17,43	20,90	1.676	1.307
	FC-45 14/12	7,71	18,31	21,78	1.788	1.395
	FC-45 14/13	7,71	19,19	22,66	1.900	1.482
	FC-45 14/14	7,71	20,07	23,54	2.012	1.570
	FC-45 14/15	7,71	20,95	24,42	2.124	1.657
	FC-45 14/16	7,72	21,84	25,31	2.238	1.745
	FC-45 14/17	7,72	22,72	26,19	2.350	1.833
	FC-45 14/18	7,72	23,60	27,07	2.462	1.920
	FC-45 14/19	7,72	24,48	27,95	2.574	2.008
	FC-45 14/20	7,72	25,36	28,83	2.686	2.095
	FC-45 14/21	7,72	26,24	29,71	2.798	2.183
	FC-45 14/22	7,72	27,12	30,59	2.910	2.27
	FC-45 14/23	7,72	28,00	31,47	3.022	2.357
	FC-45 14/24	7,72	28,88	32,35	3.134	2.445
	FC-45 14/25	7,72	29,76	33,23	3.247	2.532
	FC-45 14/26	7,72	30,64	34,11	3.359	2.620
	FC-45 14/27	7,72	31,52	34,99	3.471	2.707
	FC-45 14/28	7,72	32,40	35,87	3.583	2.795
	FC-45 14/29	7,72	33,28	36,75	3.695	2.882
	FC-45 14/30	7,72	34,16	37,63	3.807	2.969

DIAMETER METERS (FT)	MODEL	HEIGHTS			CAPACITY	
		STRUCTURES M (A)	EAVES M (B)	OVERALL M (C)	M <sup>3</sup>	TONNES
<b>FC-45 15</b> <b>D=13,64 m</b> (45 FT)	FC-45 15/04	8,17	11,73	15,47	1.059	826
	FC-45 15/05	8,17	12,61	16,35	1.187	926
	FC-45 15/06	8,17	13,49	17,23	1.316	1.027
	FC-45 15/07	8,17	14,37	18,11	1.445	1.127
	FC-45 15/08	8,17	15,25	18,99	1.573	1.227
	FC-45 15/09	8,17	16,13	19,87	1.702	1.328
	FC-45 15/10	8,17	17,01	20,75	1.831	1.428
	FC-45 15/11	8,17	17,89	21,63	1.959	1.528
	FC-45 15/12	8,17	18,77	22,51	2.088	1.629
	FC-45 15/13	8,17	19,65	23,39	2.217	1.729
	FC-45 15/14	8,17	20,53	24,27	2.345	1.829
	FC-45 15/15	8,17	21,41	25,15	2.474	1.930
	FC-45 15/16	8,17	22,29	26,03	2.603	2.030
	FC-45 15/17	8,17	23,17	26,91	2.731	2.131
	FC-45 15/18	8,17	24,05	27,79	2.860	2.231
	FC-45 15/19	8,17	24,93	28,67	2.989	2.331
	FC-45 15/20	8,17	25,81	29,55	3.117	2.432
	FC-45 15/21	8,17	26,69	30,43	3.246	2.532
	FC-45 15/22	8,17	27,57	31,31	3.375	2.632
	FC-45 15/23	8,17	28,45	32,19	3.503	2.733
	FC-45 15/24	8,17	29,33	33,07	3.632	2.833
	FC-45 15/25	8,17	30,21	33,95	3.761	2.933
	FC-45 15/26	8,17	31,09	34,83	3.889	3.034
	FC-45 15/27	8,17	31,97	35,71	4.018	3.134
	FC-45 15/28	8,17	32,85	36,59	4.147	3.235
	FC-45 15/29	8,17	33,73	37,47	4.276	3.335
	FC-45 15/30	8,17	34,61	38,35	4.404	3.435
	FC-45 15/31	8,17	35,49	39,23	4.533	3.536
	FC-45 15/32	8,17	36,37	40,11	4.662	3.636

## FC-45 HOPPER SILOS DIMENSIONS AND CAPACITIES

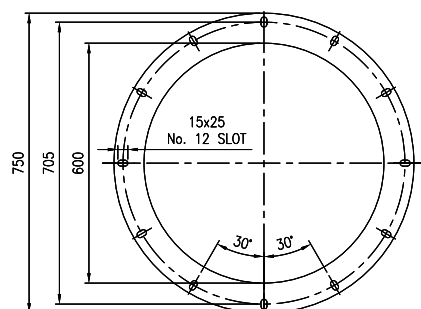
DIAMETER METERS (FT)	MODEL	HEIGHTS			CAPACITY	
		STRUCTURES M (A)	EAVES M (B)	OVERALL M (C)	M <sup>3</sup>	TONNES
<b>FC-45 16</b> D=14,55 m (58 FT)	FC-45 16/04	8,63	12,19	16,18	1.243	970
	FC-45 16/05	8,63	13,07	17,06	1.39	1.084
	FC-45 16/06	8,63	13,95	17,94	1.536	1.198
	FC-45 16/07	8,63	14,83	18,82	1.682	1.312
	FC-45 16/08	8,63	15,71	19,70	1.829	1.427
	FC-45 16/09	8,63	16,59	20,58	1.975	1.541
	FC-45 16/10	8,63	17,47	21,46	2.122	1.655
	FC-45 16/11	8,63	18,35	22,34	2.268	1.769
	FC-45 16/12	8,63	19,23	23,22	2.414	1.883
	FC-45 16/13	8,63	20,11	24,10	2.561	1.997
	FC-45 16/14	8,63	20,99	24,98	2.707	2.112
	FC-45 16/15	8,63	21,87	25,87	2.854	2.226
	FC-45 16/16	8,63	22,75	26,75	3.000	2.340
	FC-45 16/17	8,63	23,63	27,63	3.146	2.454
	FC-45 16/18	8,63	24,51	28,51	3.293	2.568
	FC-45 16/19	8,63	25,39	29,39	3.439	2.683
	FC-45 16/20	8,63	26,27	30,27	3.586	2.797
	FC-45 16/21	8,63	27,15	31,15	3.732	2.911
	FC-45 16/22	8,63	28,03	32,03	3.878	3.025
	FC-45 16/23	8,63	28,91	32,91	4.025	3.139
	FC-45 16/24	8,63	29,79	33,79	4.171	3.254
	FC-45 16/25	8,63	30,67	34,67	4.318	3.368
	FC-45 16/26	8,63	31,55	35,55	4.464	3.482
	FC-45 16/27	8,63	32,43	36,43	4.610	3.596
	FC-45 16/28	8,63	33,31	37,31	4.757	3.710
	FC-45 16/29	8,63	34,19	38,19	4.903	3.824
	FC-45 16/30	8,63	35,07	39,07	5.050	3.939
	FC-45 16/31	8,63	35,95	39,95	5.196	4.053
	FC-45 16/32	8,63	36,83	40,83	5.342	4.167

### ELEVATION



### LEGEND AND DETAILS

- A = Structure height
  - B = Height to eave
  - C = Overall height
  - D = Bin sheets mean diameter
  - E = Outlet collar clearance for FC-45 from mod. 04 to 08 = 1.00 m and from mod. 09 to 16 = 1.45 m
  - F\* = Outlet collar inside diameter = 600 mm
  - G\* = Roof cap diameter = 900 mm  
(max. diam. of inlet pipe 420 mm)
- \* = Fixed dimensions



### HOPPER OUTLET DETAIL

#### NOTE

The maximum capacity of the silo is calculated assuming an angle of repose of 28 degrees and based uncompacteds cereals weight of 780kg/m<sup>3</sup>.

Standard silos are designed to meet:

- 144 km/h gusted wind speed
- 75 kg/m<sup>2</sup> of snow load on the roof
- No seismic zone

Standard roof peak capacity from 500 to 1000 kg depending on silo model.



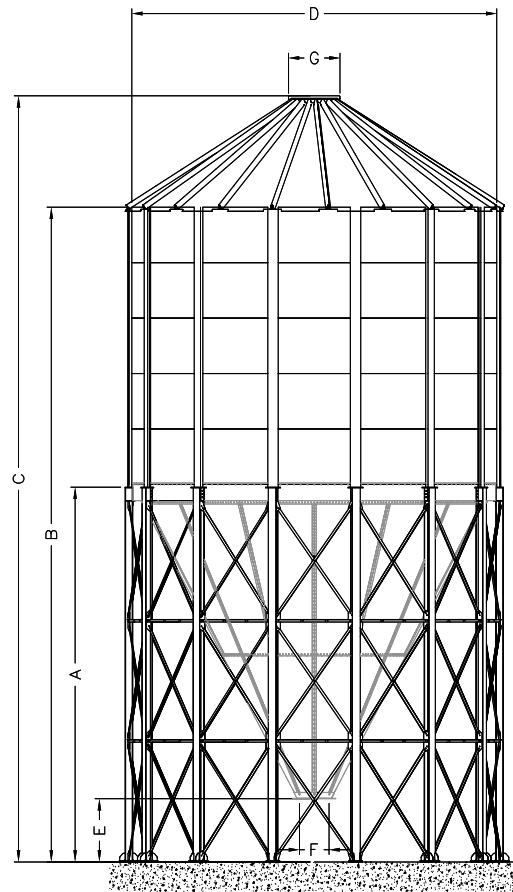
**FC-60 HOPPER SILOS DIMENSIONS AND CAPACITIES**

DIAMETER METERS (FT)	MODEL	HEIGHTS			CAPACITY		DIAMETER METERS (FT)	MODEL	HEIGHTS			CAPACITY		
		STRUCTURES M (A)	EAVES M (B)	OVERALL M (C)	M <sup>3</sup>	TONNES			STRUCTURES M (A)	EAVES M (B)	OVERALL M (C)	M <sup>3</sup>	TONNES	
<b>FC-60 04</b> D=3,64 m (12 FT)	FC-60 04/04	3,59	7,15	8,14	52	41	<b>FC-60 06</b> D=5,46 m (18 FT)	FC-60 06/04	5,17	8,72	10,24	134	104	
	FC-60 04/05	3,59	8,03	9,02	61	48		FC-60 06/05	5,17	9,60	11,12	154	120	
	FC-60 04/06	3,59	8,91	9,90	70	55		FC-60 06/06	5,17	10,48	12,00	175	136	
	FC-60 04/07	3,59	9,79	10,78	79	62		FC-60 06/07	5,17	11,36	12,88	195	152	
	FC-60 04/08	3,59	10,67	11,66	89	69		FC-60 06/08	5,17	12,24	13,76	216	168	
	FC-60 04/09	3,59	11,55	12,54	98	76		FC-60 06/09	5,17	13,12	14,64	236	184	
	FC-60 04/10	3,59	12,43	13,42	107	83		FC-60 06/10	5,17	14,00	15,52	257	200	
	FC-60 04/11	3,59	13,31	14,30	116	91		FC-60 06/11	5,17	14,88	16,40	278	217	
	FC-60 04/12	3,59	14,19	15,18	125	98		FC-60 06/12	5,17	15,76	17,28	298	233	
	FC-60 04/13	3,59	15,07	16,06	134	105		FC-60 06/13	5,17	16,64	18,16	319	249	
	FC-60 04/14	3,59	15,95	16,94	143	112		FC-60 06/14	5,17	17,52	19,04	339	265	
	FC-60 04/15	3,59	16,83	17,82	153	119		FC-60 06/15	5,17	18,41	19,92	360	281	
	FC-60 04/16	3,59	17,71	18,70	162	126		FC-60 06/16	5,17	19,29	20,80	381	297	
	FC-60 04/17	3,59	18,59	19,58	171	133		FC-60 06/17	5,17	20,17	21,68	401	313	
	FC-60 04/18	3,59	19,47	20,46	180	140		FC-60 06/18	5,17	21,05	22,56	422	329	
	FC-60 04/19	3,59	20,35	21,34	189	148		FC-60 06/19	5,17	21,93	23,44	442	345	
	FC-60 04/20	3,59	21,23	22,22	198	155		FC-60 06/20	5,17	22,81	24,32	463	361	
	<b>FC-60 05</b> D=4,55 m (15 FT)	FC-60 05/04	4,38	7,94	9,19	87		68	FC-60 06/21	5,17	23,69	25,20	484	377
		FC-60 05/05	4,38	8,82	10,07	101		79	FC-60 06/22	5,17	24,57	26,08	504	393
		FC-60 05/06	4,38	9,70	10,95	115		90	FC-60 06/23	5,17	25,45	26,96	525	409
FC-60 05/07		4,38	10,58	11,83	130	101	FC-60 06/24	5,17	26,33	27,84	545	425		
FC-60 05/08		4,38	11,46	12,71	144	112	FC-60 06/25	5,17	27,21	28,72	566	441		
FC-60 05/09		4,38	12,34	13,59	158	123	<b>FC-60 07</b> D=6,37 m (21 FT)	FC-60 07/04	5,95	9,51	11,28	193	150	
FC-60 05/10		4,38	13,22	14,47	173	135		FC-60 07/05	5,95	10,39	12,16	221	172	
FC-60 05/11		4,38	14,10	15,35	187	146		FC-60 07/06	5,95	11,27	13,05	249	194	
FC-60 05/12		4,38	14,98	16,23	201	157		FC-60 07/07	5,95	12,15	13,93	277	216	
FC-60 05/13		4,38	15,86	17,11	215	168		FC-60 07/08	5,95	13,03	14,81	305	238	
FC-60 05/14		4,38	16,74	17,99	230	179		FC-60 07/09	5,95	13,91	15,69	333	260	
FC-60 05/15		4,38	17,62	18,87	244	190		FC-60 07/10	5,95	14,79	16,57	361	281	
FC-60 05/16		4,38	18,50	19,75	258	202		FC-60 07/11	5,95	15,67	17,45	389	303	
FC-60 05/17		4,38	19,38	20,63	273	213		FC-60 07/12	5,95	16,55	18,33	417	325	
FC-60 05/18		4,38	20,26	21,51	287	224		FC-60 07/13	5,95	17,43	19,21	445	347	
FC-60 05/19		4,38	21,14	22,39	301	235		FC-60 07/14	5,95	18,31	20,09	473	369	
FC-60 05/20		4,38	22,02	23,27	316	246		FC-60 07/15	5,95	19,19	20,97	501	391	
FC-60 05/21		4,38	22,90	24,15	330	257		FC-60 07/16	5,95	20,07	21,85	529	413	
FC-60 05/22		4,38	23,78	25,03	344	268		FC-60 07/17	5,95	20,95	22,73	557	434	
FC-60 05/23		4,38	24,66	25,91	358	280		FC-60 07/18	5,95	21,83	23,61	585	456	
FC-60 05/24	4,38	25,54	26,79	373	291	FC-60 07/19		5,95	22,71	24,49	613	478		
FC-60 05/25	4,38	26,42	27,67	387	302	FC-60 07/20		5,95	23,59	25,37	641	500		
						FC-60 07/21		5,95	24,47	26,25	669	522		
						FC-60 07/22		5,95	25,35	27,13	697	544		
						FC-60 07/23		5,95	26,23	28,01	725	566		
						FC-60 07/24	5,95	27,11	28,89	753	587			
						FC-60 07/25	5,95	27,99	29,77	781	609			

## FC-60 HOPPER SILOS DIMENSIONS AND CAPACITIES

DIAMETER METERS (FT)	MODEL	HEIGHTS			CAPACITY	
		STRUCTURES M (A)	EAVES M (B)	OVERALL M (C)	M <sup>3</sup>	TONNES
<b>FC-60 08</b> D=7,28 m (24 FT)	FC-60 08/04	6,74	10,29	12,33	266	208
	FC-60 08/05	6,74	11,17	13,21	303	236
	FC-60 08/06	6,74	12,05	14,09	340	265
	FC-60 08/07	6,74	12,93	14,97	376	293
	FC-60 08/08	6,74	13,81	15,85	413	322
	FC-60 08/09	6,74	14,69	16,73	449	350
	FC-60 08/10	6,74	15,57	17,61	486	379
	FC-60 08/11	6,74	16,45	18,49	523	408
	FC-60 08/12	6,74	17,33	19,37	559	436
	FC-60 08/13	6,74	18,21	20,25	596	465
	FC-60 08/14	6,74	19,09	21,13	632	493
	FC-60 08/15	6,74	19,98	22,01	669	522
	FC-60 08/16	6,74	20,86	22,89	706	550
	FC-60 08/17	6,74	21,74	23,77	742	579
	FC-60 08/18	6,74	22,62	24,65	779	607
	FC-60 08/19	6,74	23,50	25,53	815	636
	FC-60 08/20	6,74	24,38	26,41	852	664
	FC-60 08/21	6,74	25,26	27,29	889	693
	FC-60 08/22	6,74	26,14	28,17	925	722
	FC-60 08/23	6,74	27,02	29,05	962	750
	FC-60 08/24	6,74	27,90	29,93	998	779
	FC-60 08/25	6,74	28,78	30,81	1.035	807
	FC-60 08/26	6,74	29,66	31,69	1.072	836
	FC-60 08/27	6,74	30,54	32,57	1.108	864
	FC-60 08/28	6,74	31,42	33,45	1.145	893
	FC-60 08/29	6,74	32,30	34,33	1.181	921
	FC-60 08/30	6,74	33,18	35,21	1.218	950

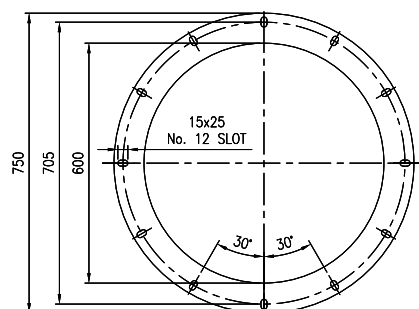
### ELEVATION



### LEGEND AND DETAILS

- A = Structure height
  - B = Height to eave
  - C = Overall height
  - D = Bin sheets mean diameter
  - E\* = Outlet collar clearance = 1000 mm
  - F\* = Outlet collar inside diameter = 600 mm
  - G\* = Roof cap diameter = 900 mm
- (max. diam. of inlet pipe 420 mm)

\* = Fixed dimensions



### HOPPER OUTLET DETAIL

#### NOTE

The maximum capacity of the silo is calculated assuming an angle of repose of 28 degrees and based on uncompacted cereals weight of 780kg/m<sup>3</sup>.

Standard silos are designed to meet:

- 144 km/h gusted wind speed
- 75 kg/m<sup>2</sup> of snow load on the roof
- No seismic zone

Standard roof peak capacity from 500 to 1000 kg depending on silo model.







**AGI EMEA is an AGI Brand.**

AGI is a leading provider of equipment solutions for agriculture bulk commodities including seed, fertilizer, grain, and feed systems with a growing platform in providing equipment and solutions for food processing facilities. AGI has manufacturing facilities in Canada, the United States, the United Kingdom, Brazil, India and Italy and distributes its products globally.

## **AGI EMEA**

AGI EMEA S.R.L. (Head Office) - Via Bertella 2 - 40064, Ozzano dell'Emilia (BO) - Italy | **P** +39 051 789 107 | **F** +39 051 796 300 | **E** emea@aggrowth.com  
 AGI FRAME Plant - Via Barbariga 7 - 30032 Fiesso d'Artico (VE) - Italy | **P** +39 051 798 107 | **F** +39 051 796 300 | **E** frame@aggrowth.com  
 AGI PTM Plant - Via Mario Tognato, 10 - 35042 Este (PD) - Italy | **P** +39 0429 600 973 | **F** +39 0429 600 874 | **E** ptm@aggrowth.com

Share Capital: € 500.000,00 | VAT ID: IT03293161208 | Companies' register: BO03293161208